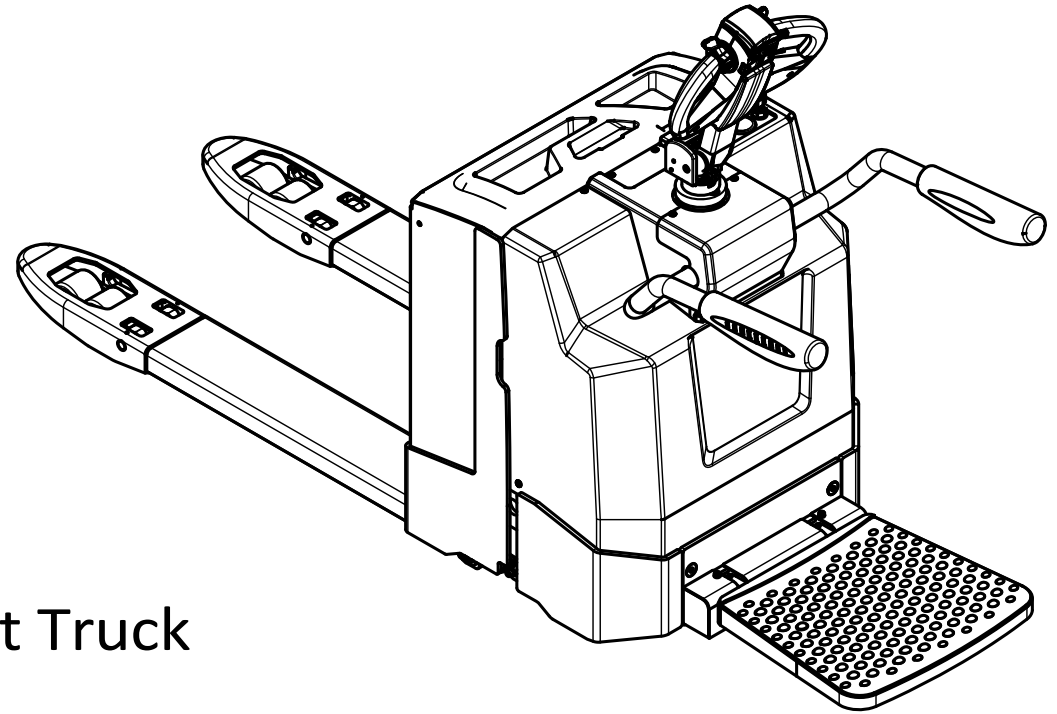




Material Handling Equipment -Manufacturer

## PARTS LIST

ME20/25 ME20/25F08 Pallet Truck



BANYITONG SCIENCE&TECHNOLOGY DEVELOPING CO.,LTD.

# Instructions

1. This catalogue collects all the parts of mode ME25 Pallet truck ;
2. It indicated the item: such as “—2008.8 ” means parts are used to August,2008, "2006.10-” means parts are used from Oct,2006.
3. Purchasing parts, it is necessary to specify the model of forklift truck, series number,part number and name and the quantity
4. To make sure forklift truck in good condition,please make use of our parts to replace or repair.
5. To improve the quality of the product, we will update it. For the details,please contact free to sales department .

# Content

No.	Fig No.	Name	Applicable Model	Page
One Pallet truck				
Fig. 1-1	ME20/25	Pallet truck	ME20/25	1-1
Fig. 1-2	ME20/25F08	Pallet truck	ME20/25F08	1-2
Two Body system				
Fig. 2-1	TEP25.1	Body system	ME20/25	2-1
Fig. 2-2	TEP25.1F08	Body system	ME20/25F08	2-4
Fig. 2-3	TEP25.1.2	Torsion bar assembly	ME20/25 ME20/25F08	2-5
Fig. 2-4	TEP25.1.2.8	Balance wheel assembly	ME20/25 ME20/25F08	2-6
Fig. 2-5	TEP25.1.10	Pedal assembly	ME20/25 ME20/25F08	2-7
Three Lifting system				
Fig. 3-1	TEP25.2	Lifting system	ME20/25 ME20/25F08	3-1
Fig. 3-2	TEP25.2.5	Bearing wheel assembly	ME20/25 ME20/25F08	3-3
Four Hydraulic system				
Fig. 4-1	TEP25.3	Hydraulic system	ME20/25 ME20/25F08	4-1
Fig. 4-2	TEP25.3.30	Electrical schematic	ME20/25 ME20/25F08	4-2
Five Drive system				

# Content

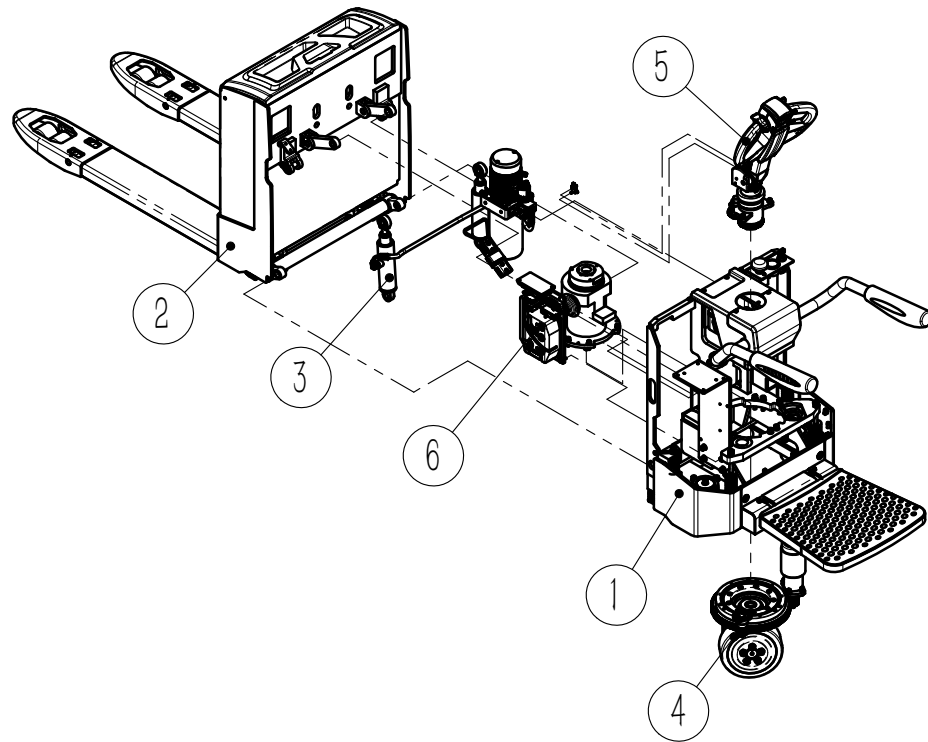
No.	Fig. No.	Name	Applicable Model	Page
Fig. 5-1	TEP25.4	Drive system	ME20/25	5-1
Fig. 5-2	BQD1502	Drive assembly	ME20/25F08	5-2
Fig. 5-3	BQD23001	Drive unit	ME20/25	5-3
Fig. 5-4	BQD1502.1	Drive box assembly	ME20/25F08	5-4
Fig. 5-5	DZX24110.4	Steering feedback system component	ME20/25	5-6
Six Steering system				
Fig. 6-1	TEP25.5	Steering system	ME20/25	6-1
Fig. 6-2	TEP25.5F08	Steering system	ME20/25F08	6-2
Fig. 6-3	DZX24110.2	Upper steering parts	ME20/25	6-3
Fig. 6-4	BCZ13	Joystick assembly	ME20/25	6-4
Fig. 6-5	BCZ11	Joystick assembly	ME20/25F08	6-5
Fig. 6-6	BSB12	Handle assembly	ME20/25 ME20/25F08	6-6
Seven Electrical system				
Fig. 7-1	TEP25.7	Electrical system	ME20/25	7-1
Fig. 7-2	TEP25.7F08	Electrical system	ME20/25F08	7-2
Fig. 7-3	TEP25.7.10(1220C)	Electrical schematic	ME20/25	7-3

# Content

No.	Fig. No.	Name	Applicable Model	Page
Fig. 7-4	TEP25.7.10F08	Electrical schematic	ME20/25F08	7-4

Fig.1-1 ME20/25 Pallet truck

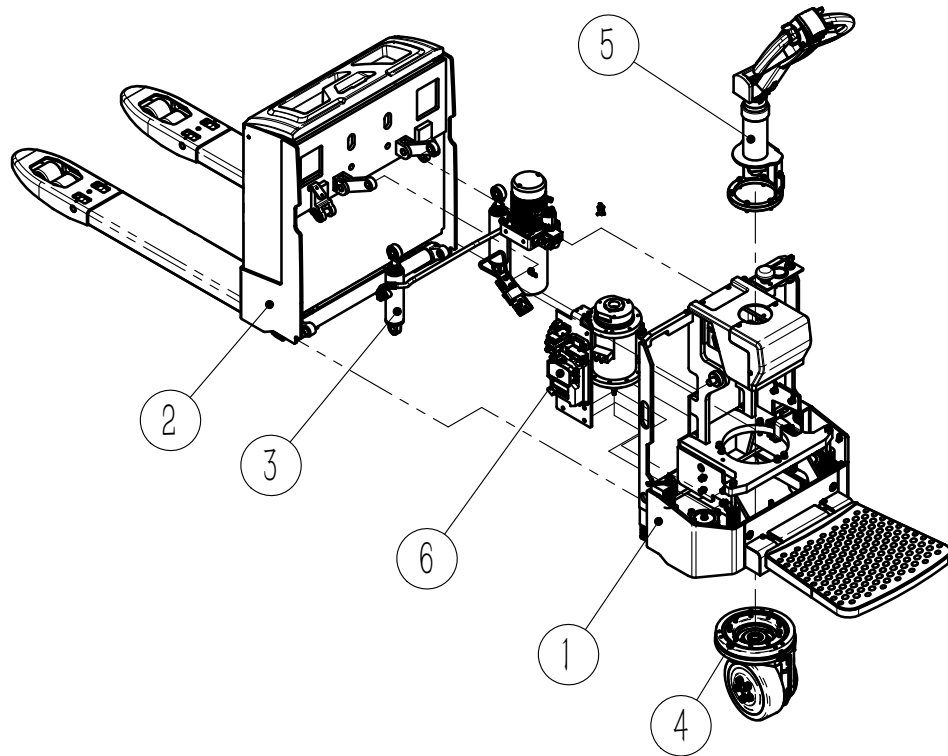
ME20/25



No.	Parts No.	Name	Qty.	Remark
1	TEP25.1	Body system	1	
2	TEP25.2	Lift system	1	
3	TEP25.3	Hydraulic system	1	
4	TEP25.4	Drive system	1	
5	TEP25.5	Steering system	1	
6	TEP25.7	Electrical system	1	
7				
8				
9				
10				
11				
12				
13				
14				
15				
16				
17				
18				
19				
20				
21				
22				
23				
24				

Fig. 1-2 ME20 / 25F08 Pallet truck

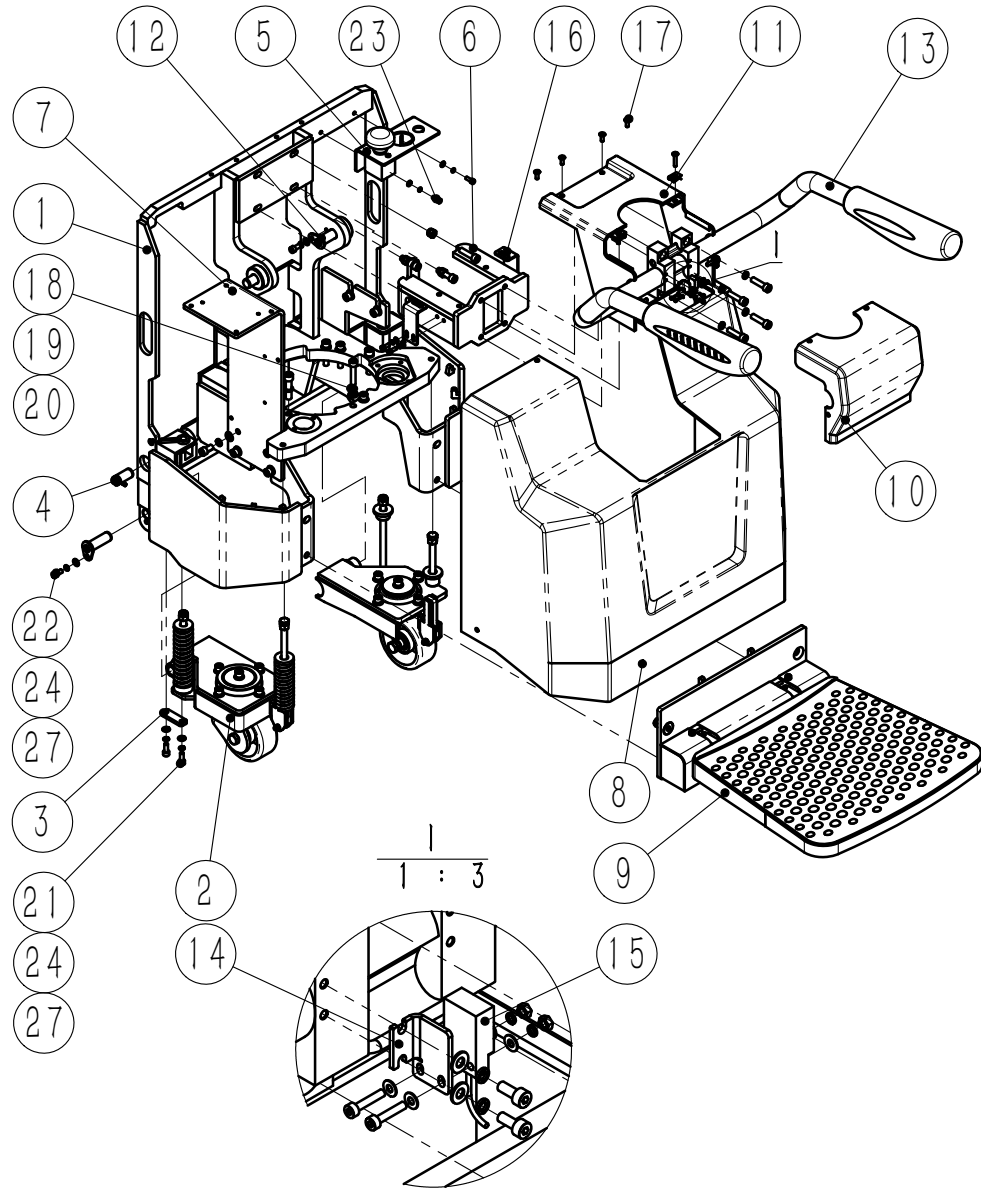
ME20/25F08



No.	Parts No.	Name	Qty.	Remark
1	TEP25.1F08	Body system	1	
2	TEP25.2	Lift system	1	
3	TEP25.3	Hydraulic system	1	
4	BQD1502	Drive system	1	
5	TEP25.5F08	Steering system	1	
6	TEP25.7F08	Electrical system	1	
7				
8				
9				
10				
11				
12				
13				
14				
15				
16				
17				
18				
19				
20				
21				
22				
23				
24				

Fig.2-1 TEP25.1 Body system

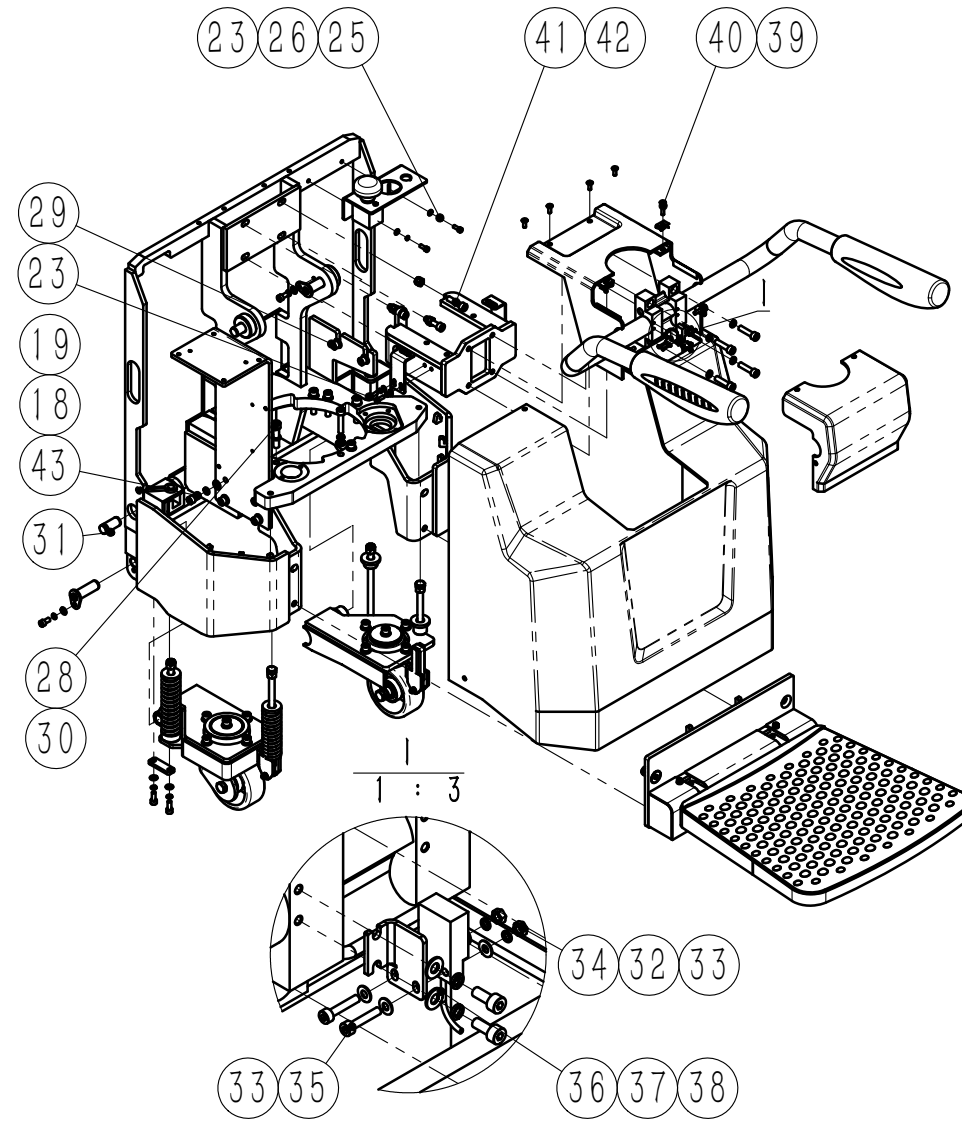
ME20/25



No.	Parts No.	Name	Qty.	Remark
1	TEP25.1.1	Frame welding	1	
2	TEP25.1.2	Torsion bar assembly	1	
3	TEP25.1.3	Torsion bar press plate	2	
4	ZDZ20045-006C	Stop shaft	2	
5	TEP25.8.2	Electrical panel small assembly		
6	TEP25.1.6	Steering support	1	
7	TEP25.1.8	Controller mounting plate	1	
8	TEP25.1.9	Big cover	1	
9	TEP25.1.10	Pedal assembly	1	
10	TEP25.1.13	Rear cover	1	
11	TEP25.1.14	Up cover	1	
12	XZ20-060-LW	Trunnion pin	4	
13	BHB02	Armrest assembly	1	
14	BHB01.1.4	Proximity switch mounting plate		
15	BEFBK-NE08PB-2M	Proximity switch	1	
16	TEP25.1.15	Housing fixing plate	2	
17	DB-S M6×16	Inverted hexagonal screw	6	
18	GB93 10	Spring washer	16	
19	GB97.1 10	Flat washer	12	
20	GB70.1 M10×50	Hex socket head cap screws	6	
21	GB70.1 M8×20	Hex socket head cap screws	4	
22	GB70.1 M8×16	Hex socket head cap screws	4	
23	GB70.1 M6×16	Hex socket head cap screws	6	
24	GB93 8	Spring washer	8	



Fig. 2-1 TEP25.1 Body system

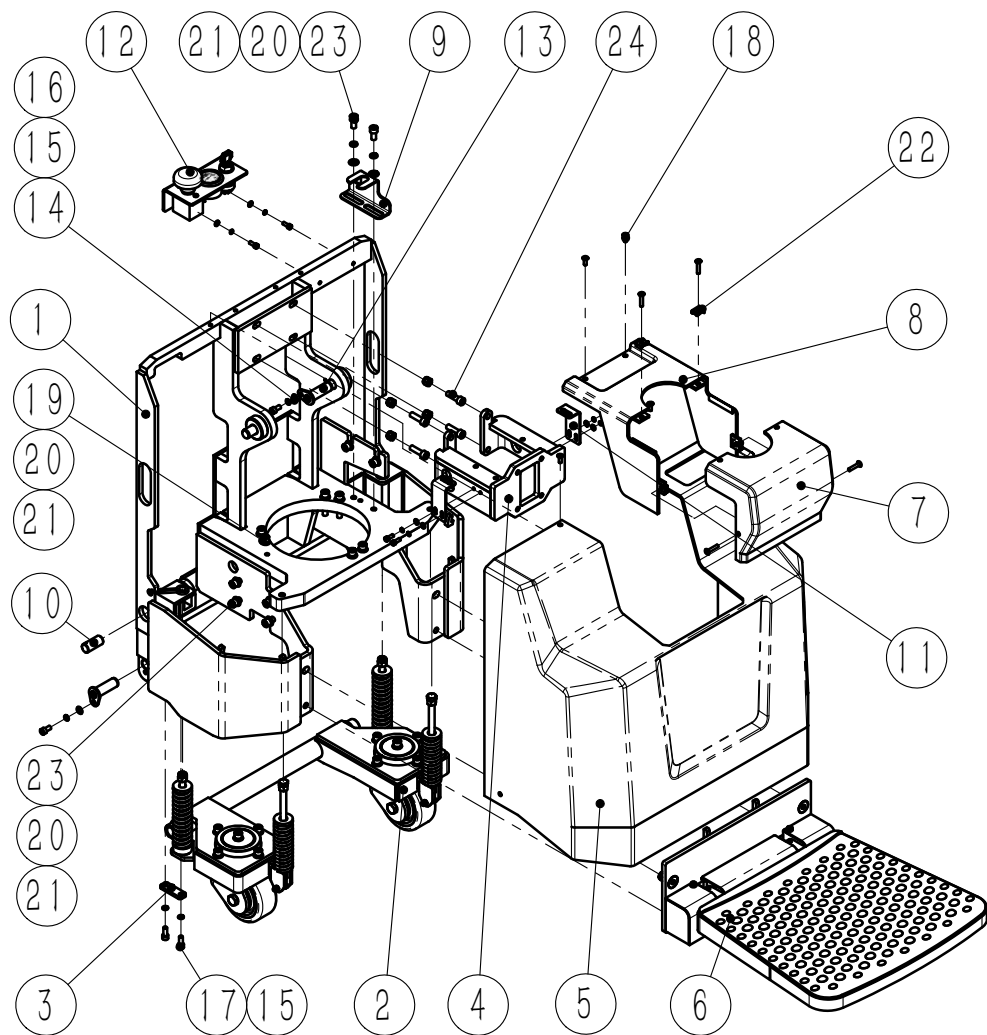


ME20/25

No.	Parts No.	Name	Qty.	Remark
25	GB93 6	Spring washer	6	
26	GB97.1 6	Flat washer	6	
27	GB97.1	Flat washer	8	
28	GB70.1 M12×50	Hex socket head cap screws	2	
29	GB70.1 M10×25	Hex socket head cap screws	2	
30	GB93 12	Spring washer	2	
31	GB78 M6×10	Hex socket taper set screw	2	
32	GB93 3	Spring washer	2	
33	GB97.1 3	Flat washer	4	
34	GB6170 M3	Type 1 hex nut	2	
35	GB70.1 M3×16	Hex socket head cap screws	2	
36	GB97.1 4	Flat washer	2	
37	GB93 4	Spring washer	2	
38	GB70.1 M4×10	Hex socket head cap screws	2	
39	LP-133 M6	M6 reed nut	4	
40	DB-S M6×30	Inverted hexagonal screw	4	
41	GB70.1 M10×40	Hex socket head cap screws	8	
42	GB889.1 M10	Type 1 non-metallic insert hex lock nut	4	
43	GB70.1 M10×20	Hex socket head cap screws	4	
44				
45				
46				
47				
48				

Fig.2-2 TEP25.1F08 Body system

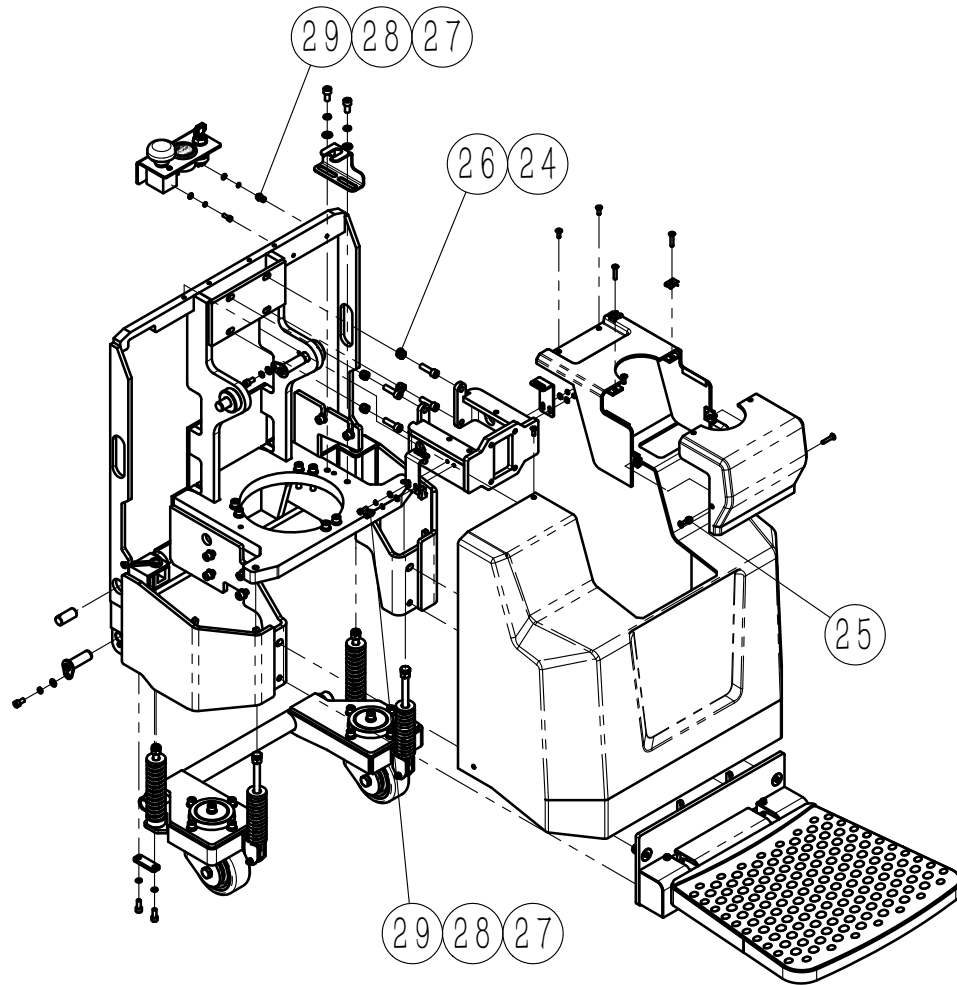
ME20/25F08



No.	Parts No.	Name	Qty.	Remark
1	TEP25.1.1F08	Frame welding	1	
2	TEP25.1.2	Torsion bar assembly	1	
3	TEP25.1.3	Torsion bar press plate	2	
4	TEP25.1.6	Steering support	1	
5	TEP25.1.9	Big cover	1	
6	TEP25.1.10	Pedal assembly	1	
7	TEP25.1.11F08	Rear cover	1	
8	TEP25.1.12F08	Upper cover	1	
9	TE25.1.12	Proximity switch mounting plate		
10	TE25.2.5	Pitman pin	2	
11	TEP25.1.15	Housing fixing plate	2	
12	TEP25.8.2	Electrical panel small assembly		
13	XZ20-060-LW	Trunnion pin	4	
14	GB97.1 8	Flat washer	4	
15	GB93 8	Spring washer	8	
16	GB70.1 M8×16	Hex socket head cap screws	4	
17	GB70.1 M8×20	Hex socket head cap screws	4	
18	DB-S M6×16	Inverted hexagonal screw	6	
19	GB70.1 M10×50	Hex socket head cap screws	6	
20	GB93 10	Spring washer	16	
21	GB97.1 10	Flat washer	16	
22	LP-133 M6	M6 reed nut	4	
23	GB70.1 M10×20	Hex socket head cap screws	10	
24	GB70.1 M10×35	Hex socket head cap screws	4	

Fig. 2-2 TEP25.1F08 Body system

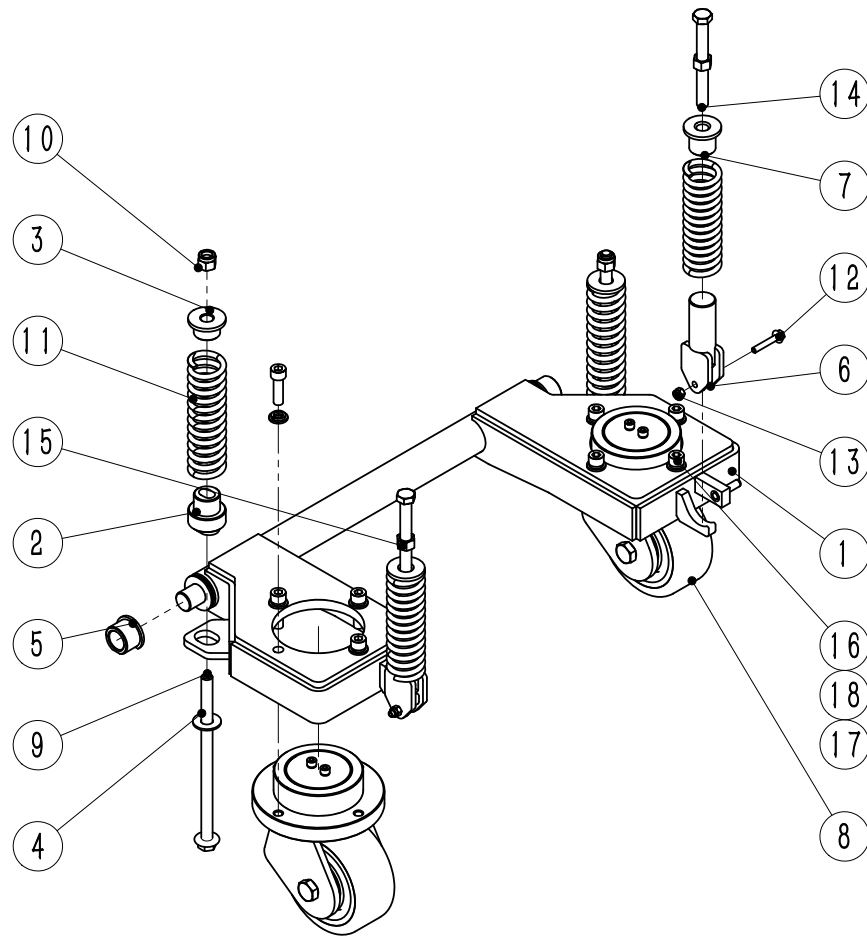
ME20/25F08



No.	Parts No.	Name	Qty.	Remark
25	DB-S M6×30	Inverted hexagonal screw	4	
26	GB889.1 M10	Type 1 non-metallic insert	4	hex lock nut
27	GB97.1 6	Flat washer	6	
28	GB93 6	Spring washer	6	
29	GB70.1 M6×16	Hex socket head cap screws	6	
30				
31				
32				
33				
34				
35				
36				
37				
38				
39				
40				
41				
42				
43				
44				
45				
46				
47				
48				

Fig. 2-3 TEP25.1.2 Torsion bar assembly

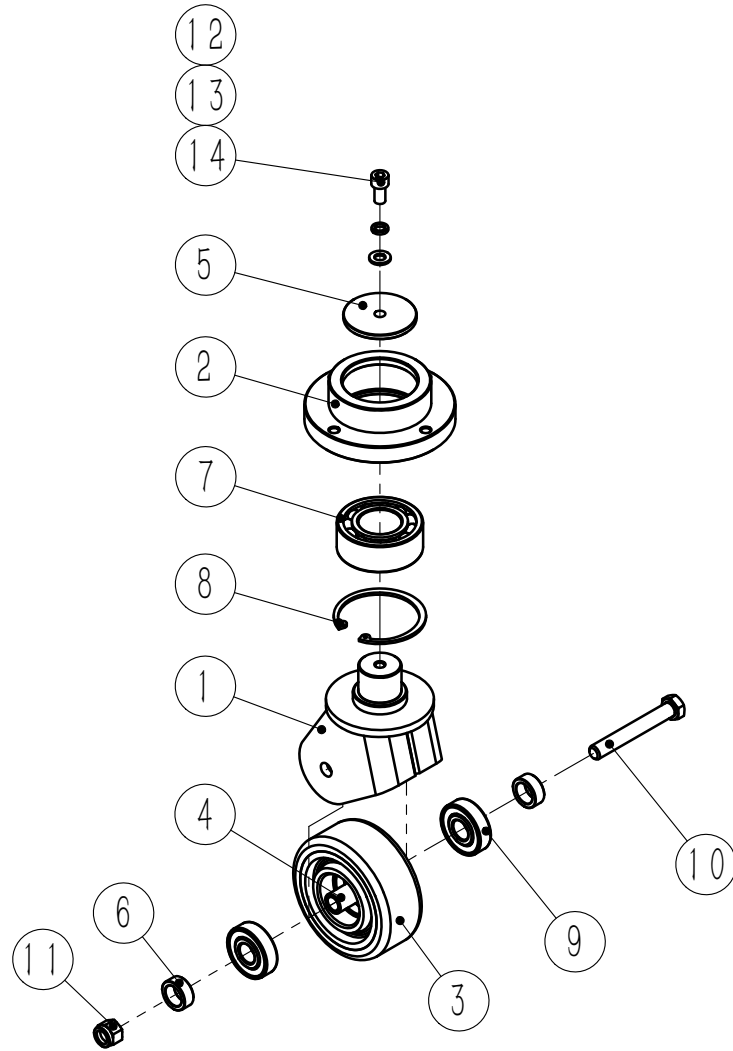
ME20/25 ME20/25F08



No.	Parts No.	Name	Qty.	Remark
1	TEP25.1.2.1	Torsion bar welding	1	
2	TEP25.1.2.2	Lower guide sleeve	2	
3	TEP25.1.2.3	Upper guide sleeve	2	
4	TEP25.1.2.4	Washer	2	
5	TEP25.1.2.5	Rotating shaft sleeve	2	
6	TEP25.1.2.6	Front guide post welding	2	
7	TEP25.1.2.7	Front guide sleeve	2	
8	TEP25.1.2.8	Universal wheel assembly	2	
9	GB5789 M12×210	Hexagon flange bolt	2	
10	GB889.1 M12	Type 1 non-metallic insert hex lock nut	2	
11	GB2089 YB6×35×150	Cylindrical helical compression spring	2	
12	GB5789 M6×35	Hexagon flange bolt	2	
13	GB889.1 M6	Type 1 non-metallic insert hex lock nut	2	
14	GB5783 M12×110	Hex bolt	2	
15	GB6170 M12	Type 1 hex nut	2	
16	GB70.1 M10×35	Hex socket head cap screws	8	
17	GB97.1 10	Flat washer	8	
18	GB93 10	Spring washer	8	
19				
20				
21				
22				
23				
24				

Fig.2-4 TEP25.1.2.8 Balance wheel assembly

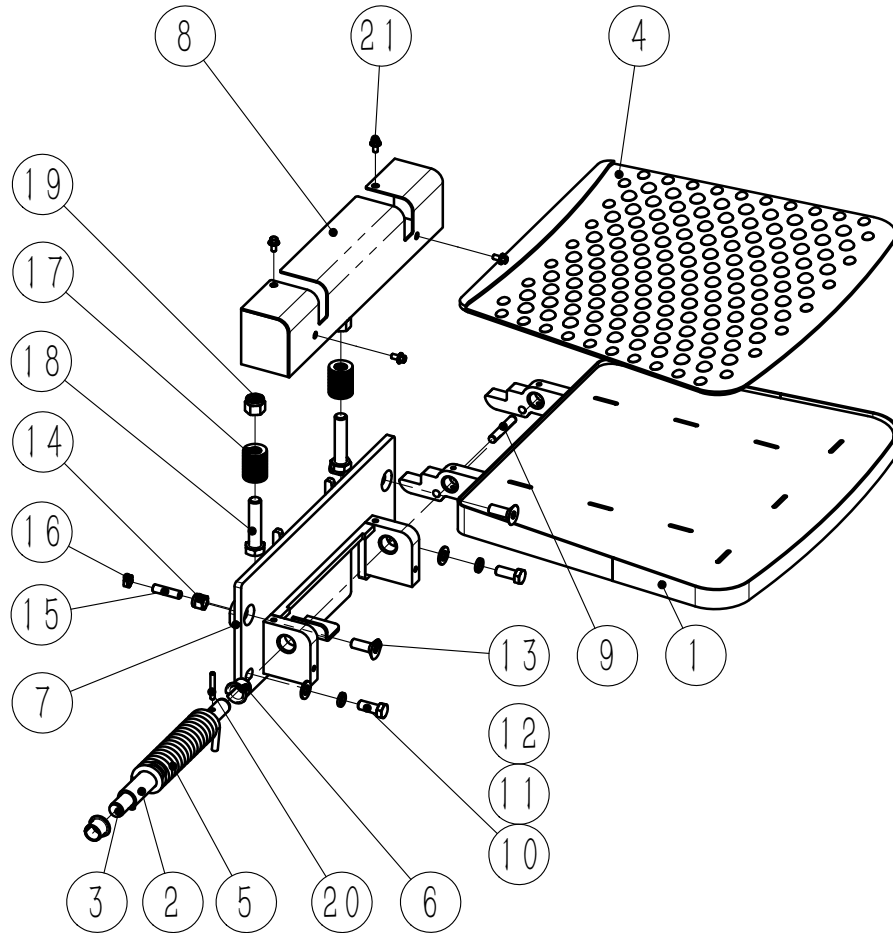
ME20/25 ME20/25F08



No.	Parts No.	Name	Qty.	Remark
1	TEP25.1.2.8.1	Balance wheel frame welding		
2	TEP25.1.2.8.2	Balance wheel bearing support		
3	BCL125×50A	Bearing wheel	1	
4	TEP25.1.2.8.5	Balancing wheel axle	1	
5	TEP25.1.2.8.6	Universal wheel cover	1	
6	GT213012	Spacer	2	
7	GB296 3208A	Double row angular contact ball bearing		
8	GB893.1 80	Internal circlip	1	
9	GB276 6304-2Z	Deep groove ball bearing	2	
10	GB5780 M14×100	Hex bolt	1	
11	GB889.1 M14	Type 1 non-metallic insert hex lock nut	1	
12	GB97.1 10	Flat washer	1	
13	GB93 10	Spring washer	1	
14	GB70.1 M10×20	Hex socket head cap screws	1	
15				
16				
17				
18				
19				
20				
21				
22				
23				
24				

Fig. 2-5 TEP25.1.10 Pedal assembly

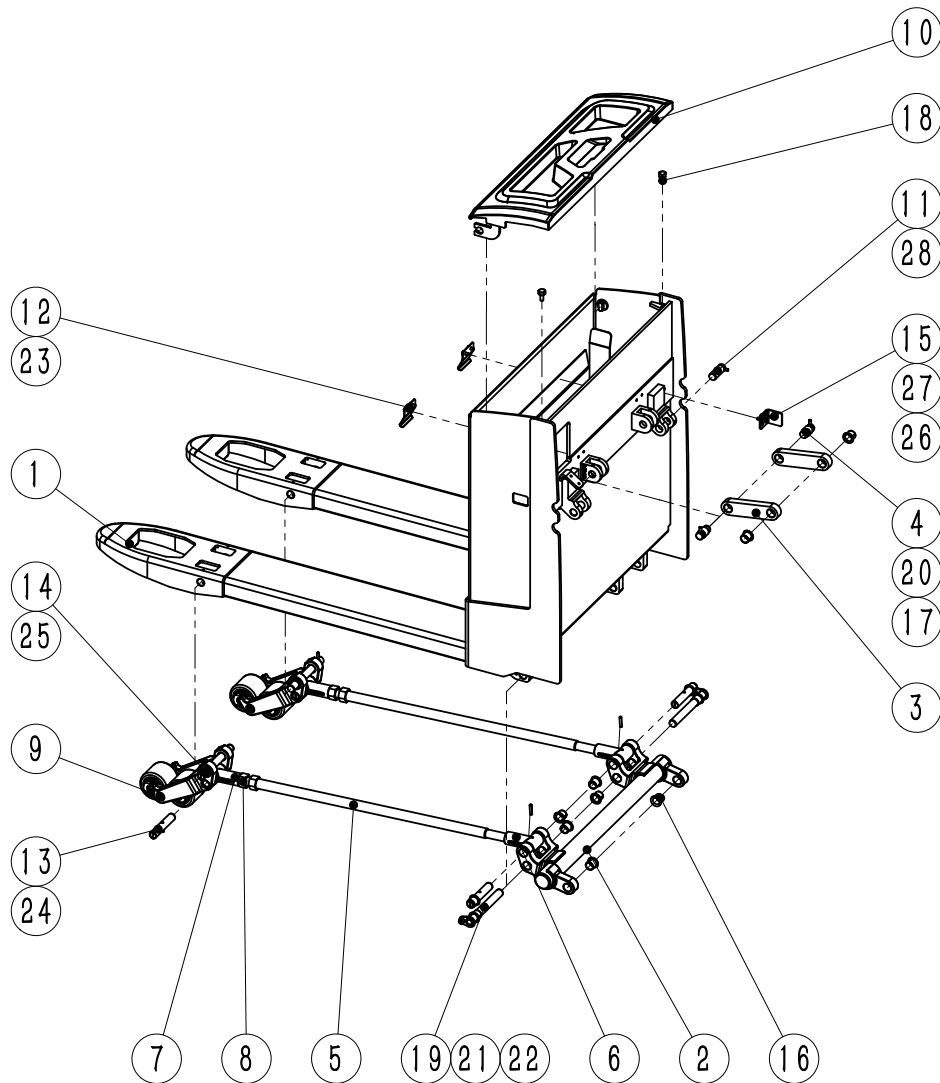
ME20/25 ME20/25F08



No.	Parts No.	Name	Qty.	Remark
1	TEP25.1.10.6	Pedal welding	1	
2	TEP25.1.10.5	Torsion spring sleeve	1	
3	TEP25.1.10.4	Pedal shaft	1	
4	TEP25.1.10.2	Rubber pedal	1	
5	TEP25.1.10.7	Torsion spring	1	
6	HZF202320	Sliding bearing	2	
7	TEP25.1.10.1	Pedal seat	1	
8	TEP25.1.10.3	Pedal cover welding	1	
9	GB119.2 10×60	Cylindrical pin	1	
10	GB5783 M12×30	Hex bolt	2	
11	GB93 12	Spring washer	2	
12	GB97.1 12	Flat washer	2	
13	GB70.3 M12×35	Hex socket head screw	2	
14	GB889.1 M12	Type 1 non-metallic insert hex lock nut	1	
15	GB77 M10×40	Hex socket flat end set screw	1	
16	GB6172.1 M10	Hexagonal thin nut	1	
17	GB1972 A31.5-1	Butterfly spring	34	
18	GB5782 M16×70	Hex bolt	2	
19	GB889.1 M16	Type 1 non-metallic insert hex lock nut	1	
20	GB879.1 6×40	Elastic round pins	1	
21	QC340 M6×12	Hex flange bearing tooth bolt	1	
22				
23				
24				

Fig. 3-1 TEP25.2 Lifting system

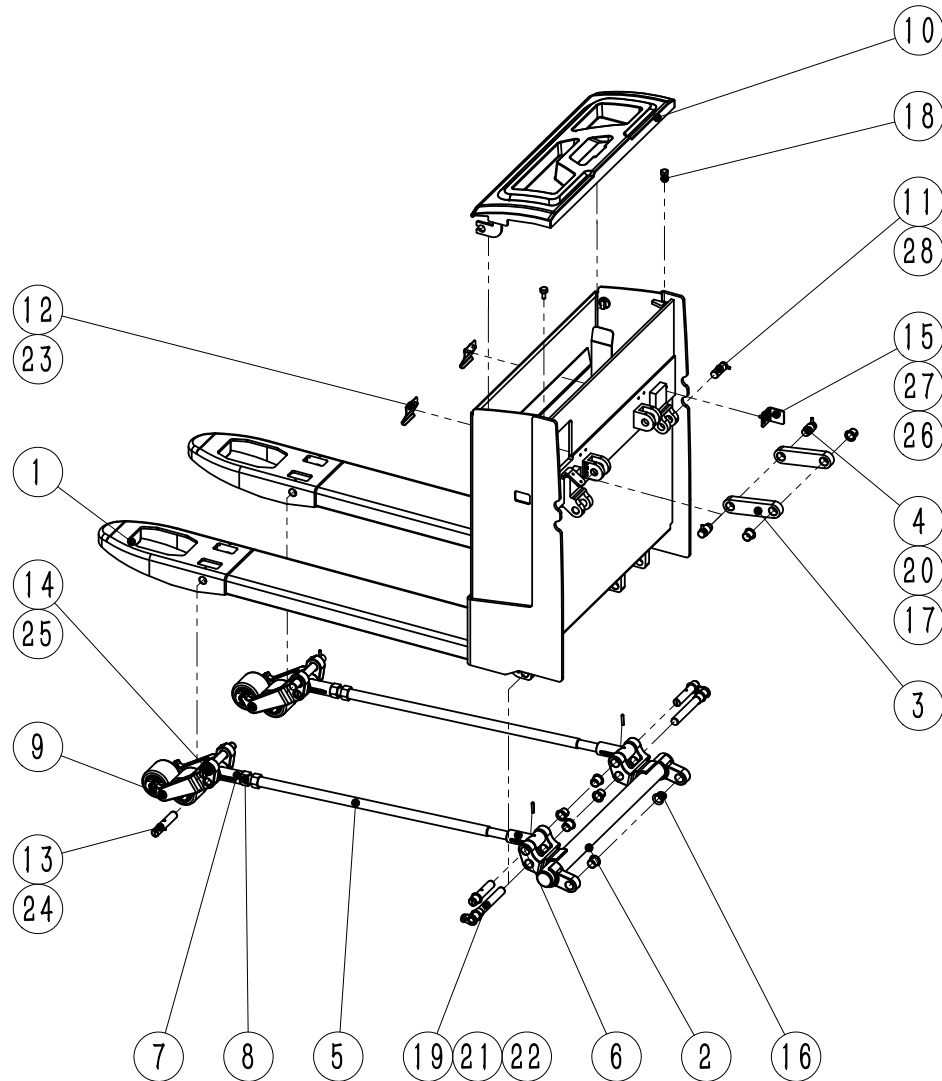
ME20/25 ME20/25F08



No.	Parts No.	Name	Qty.	Remark
1	TEP25.2.1	Fork rack welding	1	
2	TEP25.2.2.1	Lift arm assembly	1	
3	TEP25.2.3.1	Upper connecting rod	2	
4	TEP25.1.4	Pin	2	
5	TEP25.2.4.1	Push rod welding	2	
6	TEP25.2.4.2	Front pull head	2	
7	TEP25.2.4.3	Rear pull head	2	
8	GB6171 M22×1.5	Type 1 hex nut	2	
9	TEP25.2.5	Bearing wheel assembly	2	
10	TEP25.2.6	Battery cover	1	
11	TEP25.2.7	Pin II	2	
12	TEP25.2.8	Guide elastic plate	2	
13	TEP25.2.9	Pin	4	
14	TEP25.2.10	Pin	2	
15	TEP25.2.11	Travel switch limit plate	1	
16	HZF202320	Sliding bearing	12	
17	HZ202320	Sliding bearing	2	
18	MRNBFA8-20	Magnetic bolt	2	
19	XZ20-170	Trunnion pin	2	
20	GB78 M6×16	Hex socket taper set screw	2	
21	GB70.1 M8×16	Hex socket head cap screws	2	
22	GB93 8	Spring washer	2	
23	GB5789 M6×10	Hexagon flange bolt	4	
24	GB879.1 5×30	Elastic round pins	4	

Fig.3-1 TEP25.2 Lifting system

ME20/25 ME20/25F08

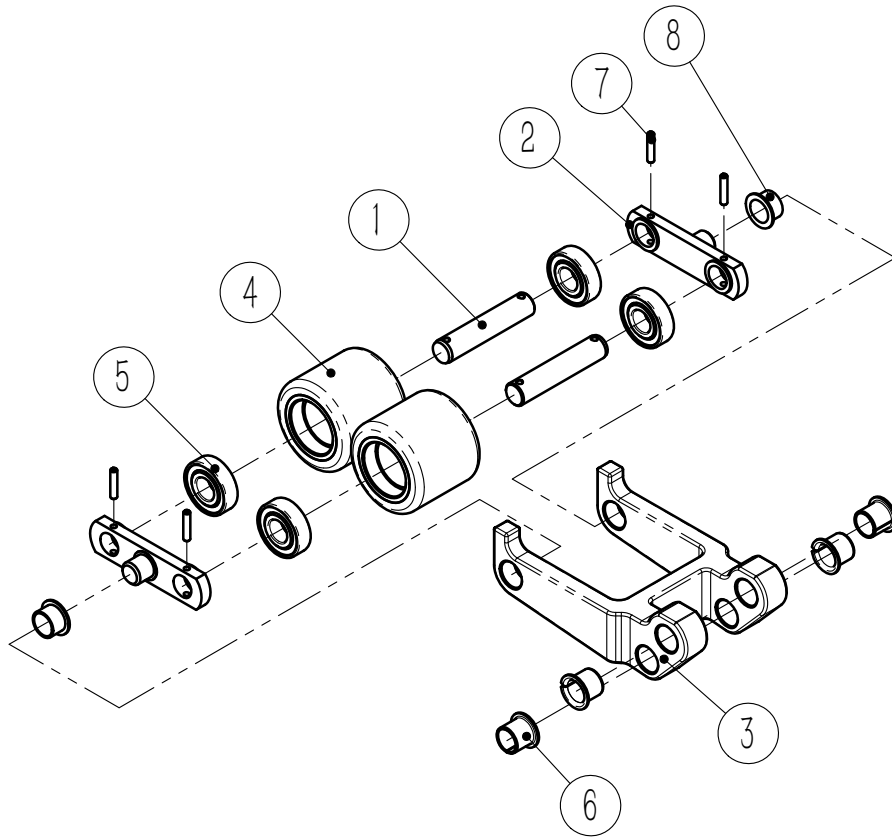


No.	Parts No.	Name	Qty.	Remark
25	GB879.1 5×50	Elastic round pins	2	
26	GB93 6	Spring washer	2	
27	GB70.1 M6×16	Hex socket head cap screws	2	
28	GB78 M6×10	Hex socket taper set screw	2	
29				
30				
31				
32				
33				
34				
35				
36				
37				
38				
39				
40				
41				
42				
43				
44				
45				
46				
47				
48				



Fig. 3-2 TEP25.2.5 Bearing wheel assembly

ME20/25 ME20/25F08

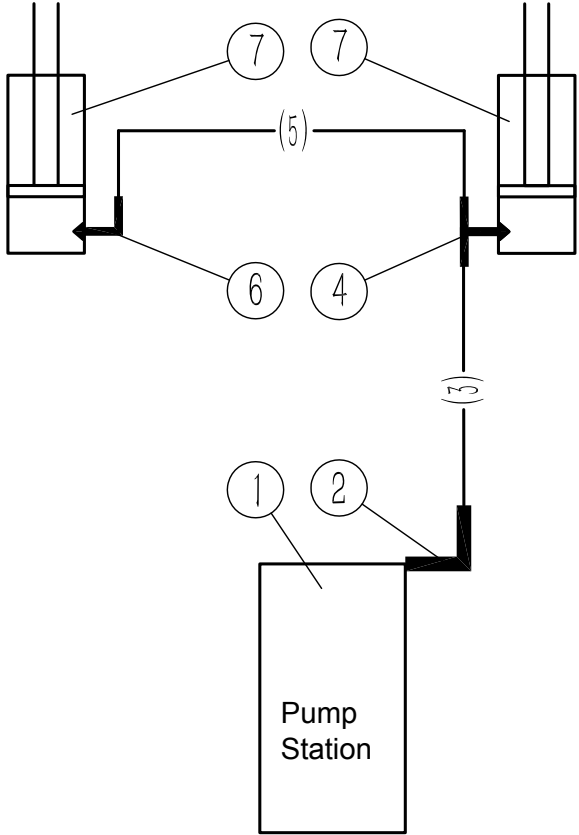


No.	Parts No.	Name	Qty.	Remark
1	ZDZ20096-084B	Stop shaft	2	
2	TE25.2.11.1	Front wheel	2	
3	TEP25.2.5.4	Bearing wheel bracket	1	
4	BCL80×70	Bearing wheel	2	
5	GB276 6204-2Z	Deep groove ball bearing	4	
6	HZF202320	Sliding bearing	4	
7	GB879.1 5×28	Elastic round pins	4	
8	HZF202315	Sliding bearing	2	
9				
10				
11				
12				
13				
14				
15				
16				
17				
18				
19				
20				
21				
22				
23				
24				

Fig. 4-1 TEP25.3 Hydraulic System

ME20/25 ME20/25F08

- Through pipe joint
- ⊥ Three-way valve joint
- └ Union elbow



NO.	Parts No.	Name	Qty	Remarks
1	195-07	Pump station	1	
2	S1CG9-14-040GDQ	Union elbow	1	
3	YGLED-06030	Hydraulic hoses assembly	1	
4	SACGC-14-04-140GDQ	Three-way valve joint	1	
5	YGUED-06070	Hydraulic hoses assembly	1	
6	S1CG9-14-040GDQ	Union elbow	1	
7	TEP25.3.1	Lift cylinder	2	

Fig.4-2 TEP25.3.30 Hydraulic Schematic

ME20/25 ME20/25F08

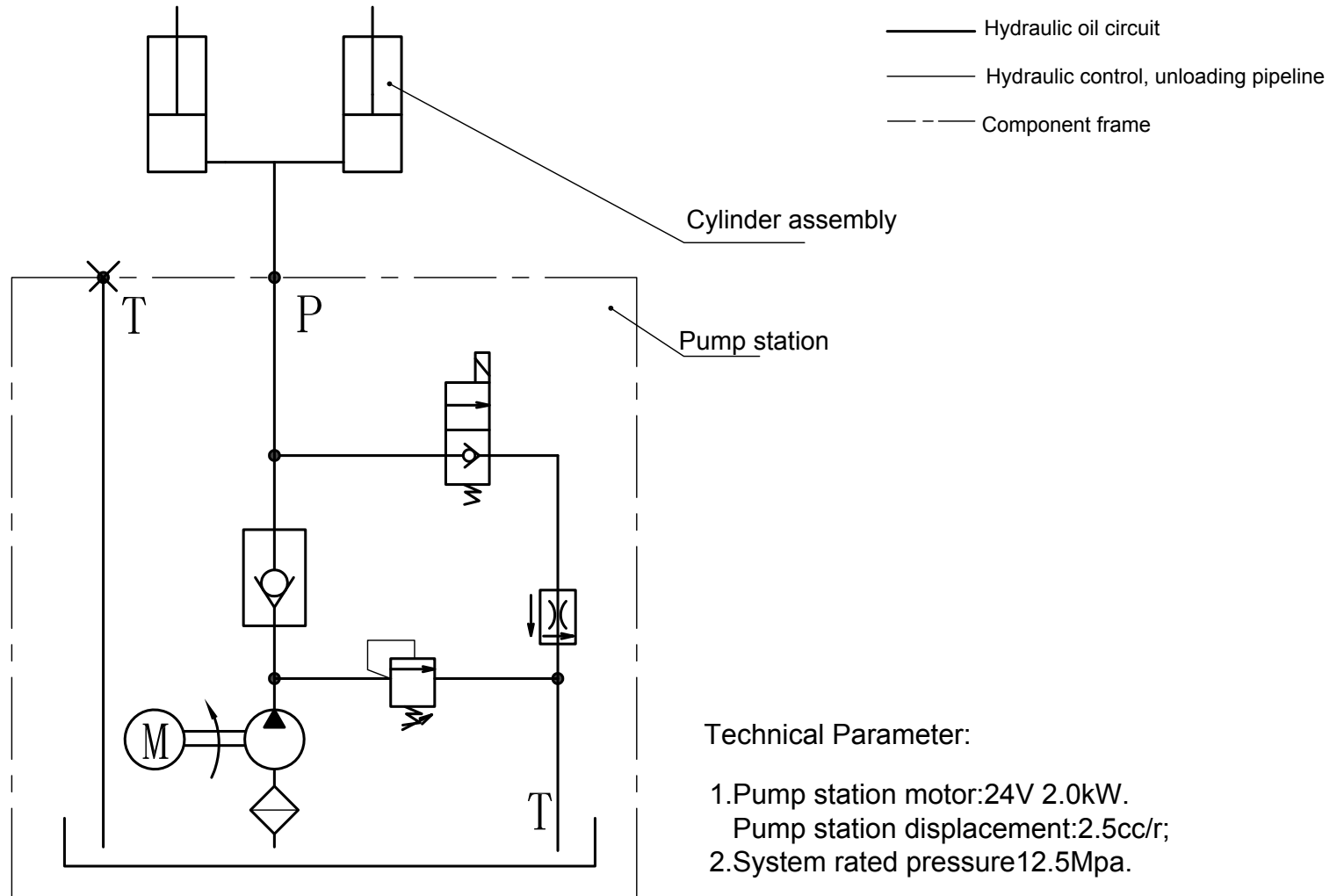
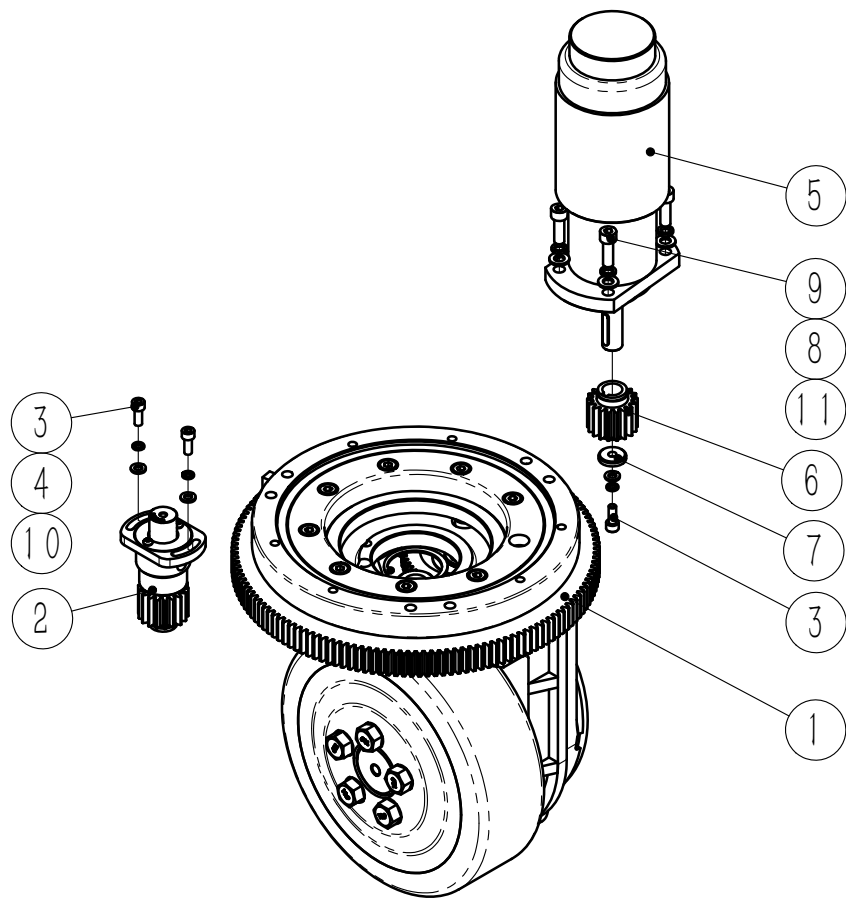


Fig.5-1 TEP25.4 Drive System

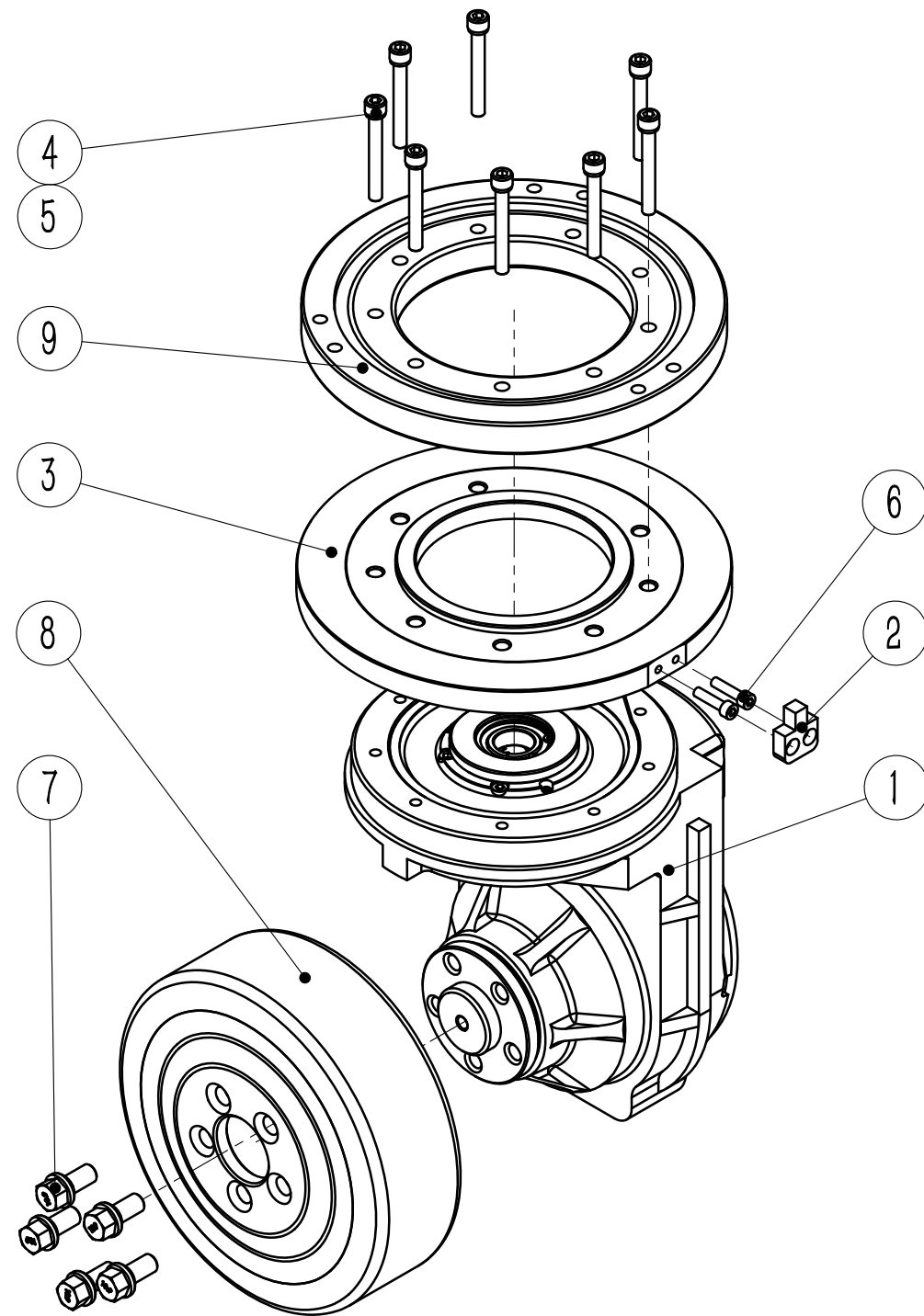
ME20/25



NO.	Parts No.	Name	Qty	Remarks
1	BQD23001	Drive unit	1	
2	DZX24110.4	Steering feedback system components	1	
3	GB70.1 M6×16	Hexagon socket cap screw	3	
4	GB93 6	Spring washer	3	
5	ZYT24165-G23.9	Steering unit	1	
6	BDZ1.4.1	Steering gear	1	
7	BDZ1.4.4	Shaft end ring	1	
8	GB93 8	Spring washer	4	
9	GB70.1 M8×25	Hexagon socket cap screw	4	
10	GB97.1 6	Flat washer	3	
11	GB97.1	Flat washer	4	
12				
13				
14				
15				
16				
17				
18				
19				
20				
21				
22				
23				
24				

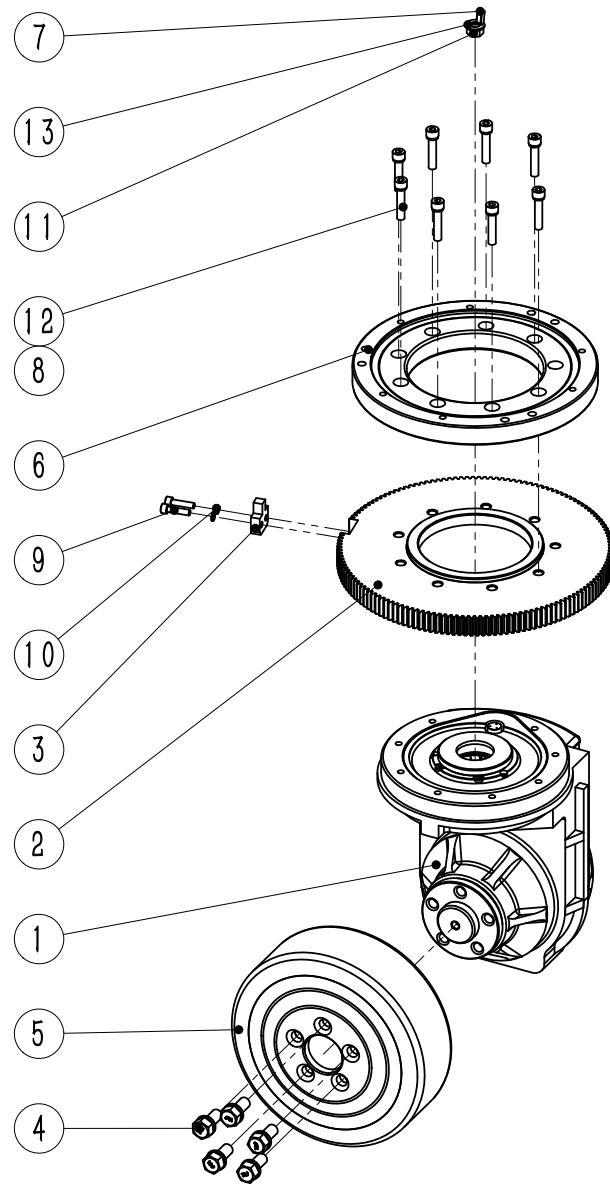
Fig.5-2 BQD1502 Drive Assembly

ME20/25F08



NO.	Parts No.	Name	Qty	Remarks
1	BQD1502.1	Gear box assembly	1	
2	BQD1503.2	Limited block	1	
3	BQD1502.15	Motor connection disc	1	
4	GB70.1 M8×65	Hexagon socket cap screw	9	
5	GB93 8	Spring washer	8	
6	GB70.1 M6×25	Hexagon socket cap screw	2	
7	BQD1502.16	Drivin wheel bolts	5	
8	BQL230×75	Driving wheel	1	
9	BYT-001-00	Slewing bearing	1	
10				
11				
12				
13				
14				
15				
16				
17				
18				
19				
20				
21				
22				
23				
24				

Fig.5-3 BQD23001 Drive Unit

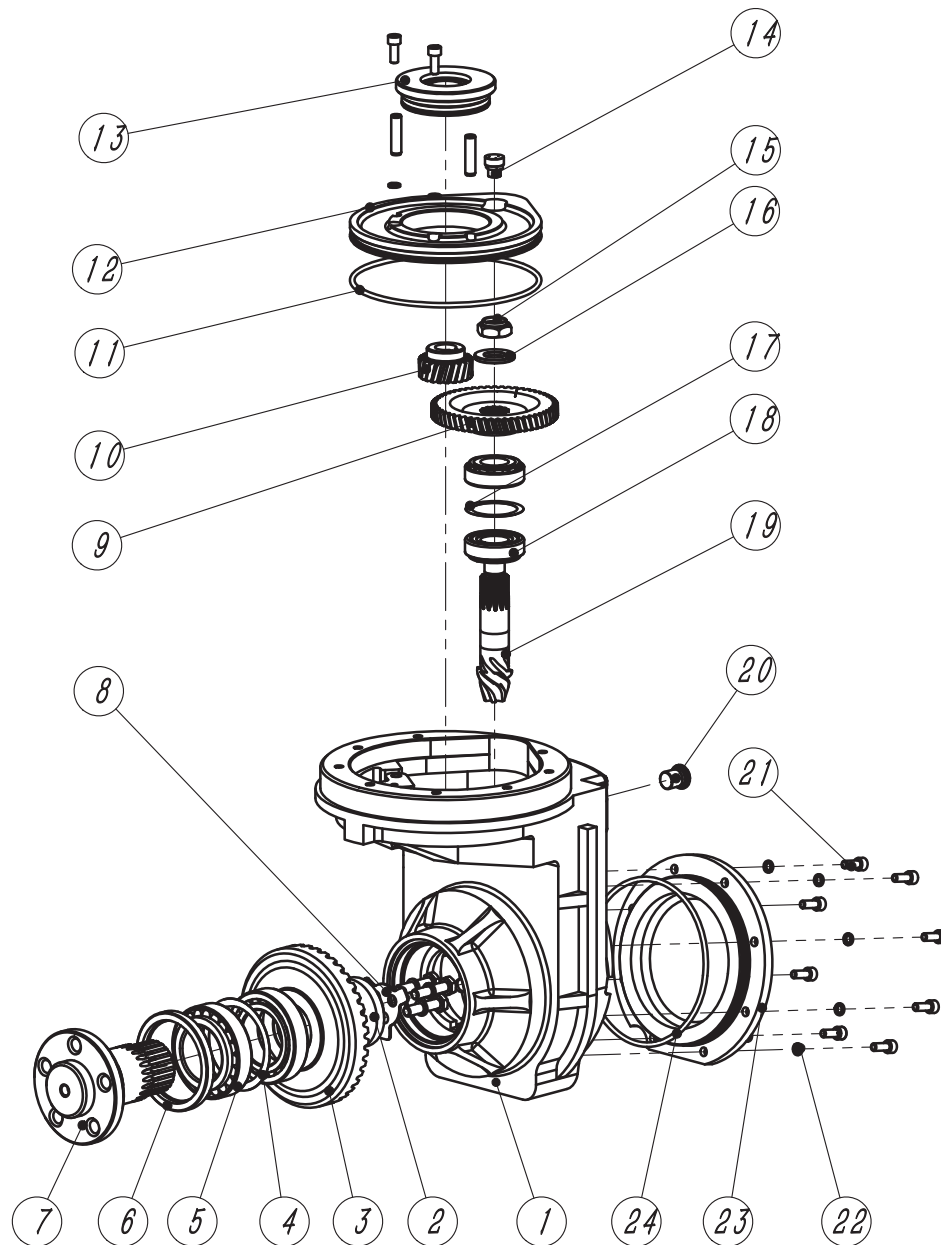


ME20/25

NO.	Parts No.	Name	Qty	Remarks
1	BQD1502.1-JK	Drive box assembly	1	
2	BQD1503.1-JK	Steering large gear ring	1	
3	BQD1503.2	Limited block	1	
4	BQD1502.4-JK	Drive box bolts	5	
5	BQL230×75	Drive wheel	1	
6	BYT-002-JK	Slewing bearing	1	
7	GB1096 6×6×18A	Normal flat key	1	
8	GB93 8	Spring washer	8	
9	GB70.1 M6×25	Hexagon socket cap screw	2	
10	GB93 6	Spring washer	2	
11	GB6170 M10	I type hexagonal nut	1	
12	GB70.1 M8×40	Hexagon socket cap screw	8	
13	GB97.1 10	Flat washer	1	
14				
15				
16				
17				
18				
19				
20				
21				
22				
23				
24				

Fig.5-4 BQD1502.1 Drive Box Assembly

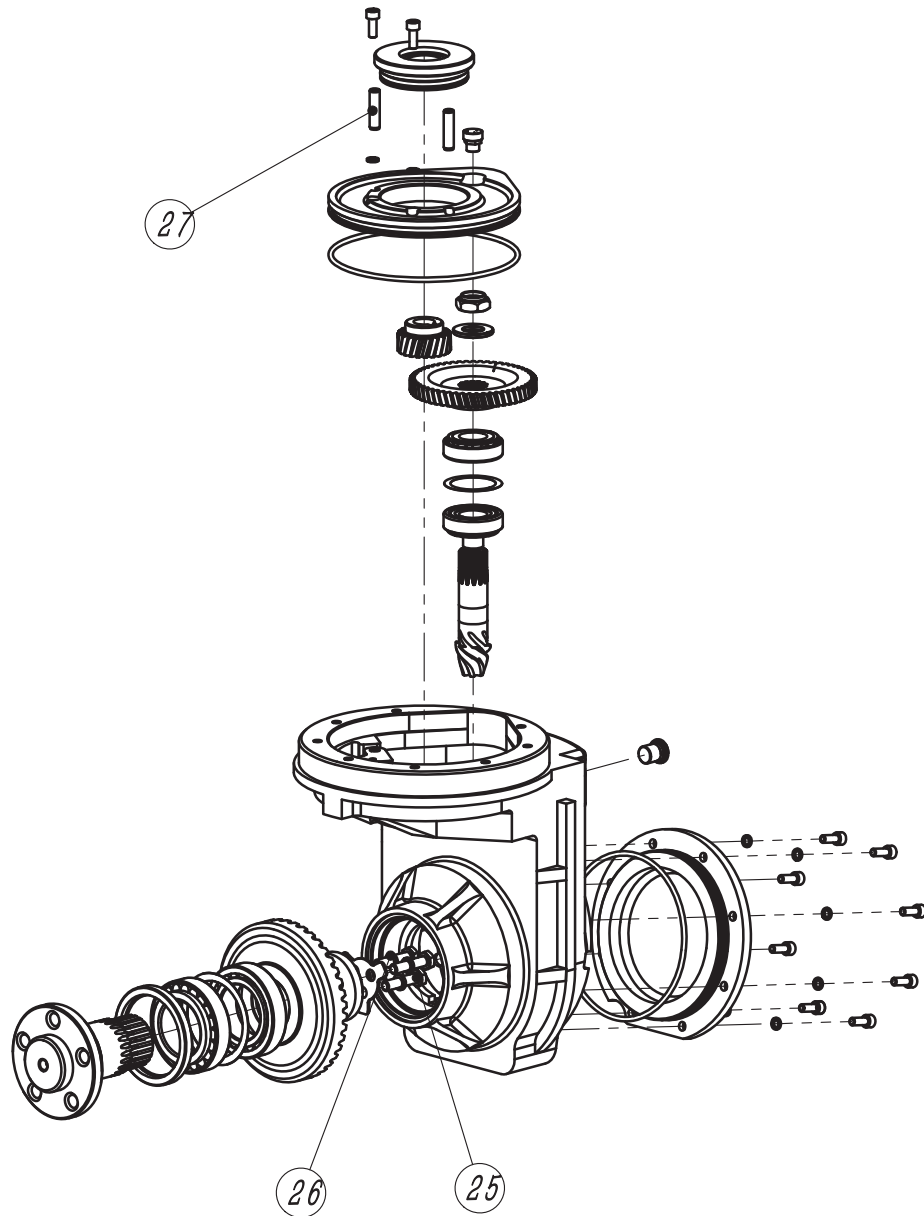
ME20/25F08



NO.	Parts No.	Name	Qty	Remarks
1	BQD1502.1.1	Gear box	1	
2	BQD1502.1.11	Half-axis pad ring	1	
3	BQD1502.1.9	Passive spiral gear	1	
4	BQD1502.1.13	Half-axis adjustment gasket	1	
5	GB297 32009	Taper roller bearing	2	
6	TC484A 658008	Inner skeleton oil seal	1	
7	BQD1502.1.10	Half axis	1	
8	BQD1502.1.12	Half-axis stop washer	1	
9	BQD1502.1.5	Passive gear	1	
10	BQD1502.1.4	Input gear	1	
11	GB3452.1 145×3.55	O-shaped rubber seals for hydraulic gas	1	
12	BQD1502.1.3	Connecting disk	1	
13	BQD1502.1.2	Location block component	1	
14	BQD1502.1.17	Air plug assembly	1	
15	BQD1502.1.16	Lock nut	1	
16	BQD1502.1.6	Passive gear washer	1	
17	BQD1502.1.8	Bevel shaft adjustment gasket	1	
18	LM72489-LM72810	Taper roller bearing	2	
19	BQD1502.1.7	Spiral bevel shaft	1	
20	BQD1502.1.15	Screw assembly	2	
21	GB70.1 M6×16	Hexagon socket cap screw	10	
22	GB93 6	Spring washer	10	
23	BQD1502.1.14	Bottom cap	1	
24	GB3452.1 128×3.55	O-shaped rubber seals for hydraulic gas	1	

Fig.5-4 BQD1502.1 Drive Box Assembly

ME20/25F08

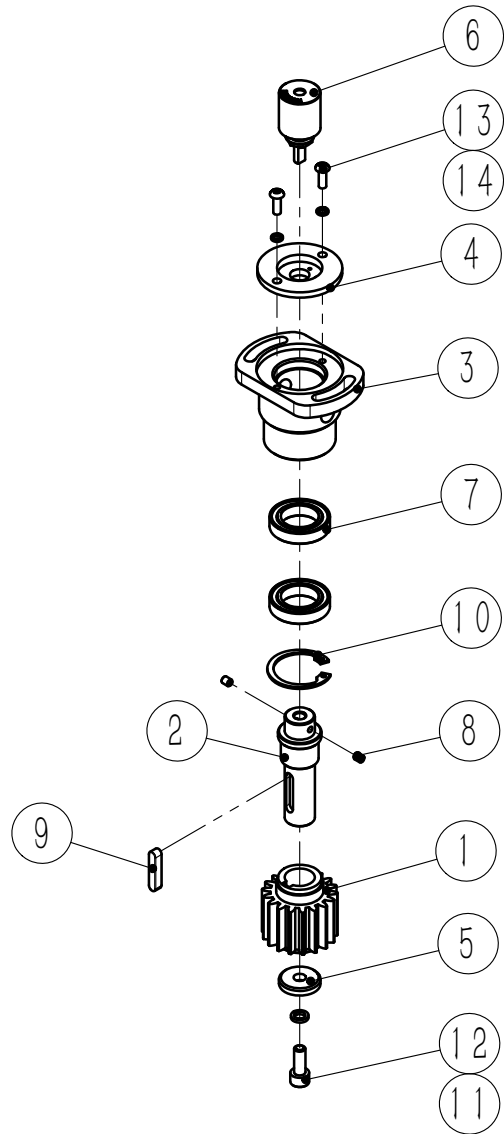


NO.	Parts No.	Name	Qty	Remarks
25	GB5782 M8 × 35	Hexagon bolt	3	
26	GB93 8	Spring washer	3	
27	GB120.1 8 × 32	Internal thread cylindrical pin		
28				
29				
30				
31				
32				
33				
34				
35				
36				
37				
38				
39				
40				
41				
42				
43				
44				
45				
46				
47				
48				



Fig.5-5 DZX24110.4 Steering feedback system components

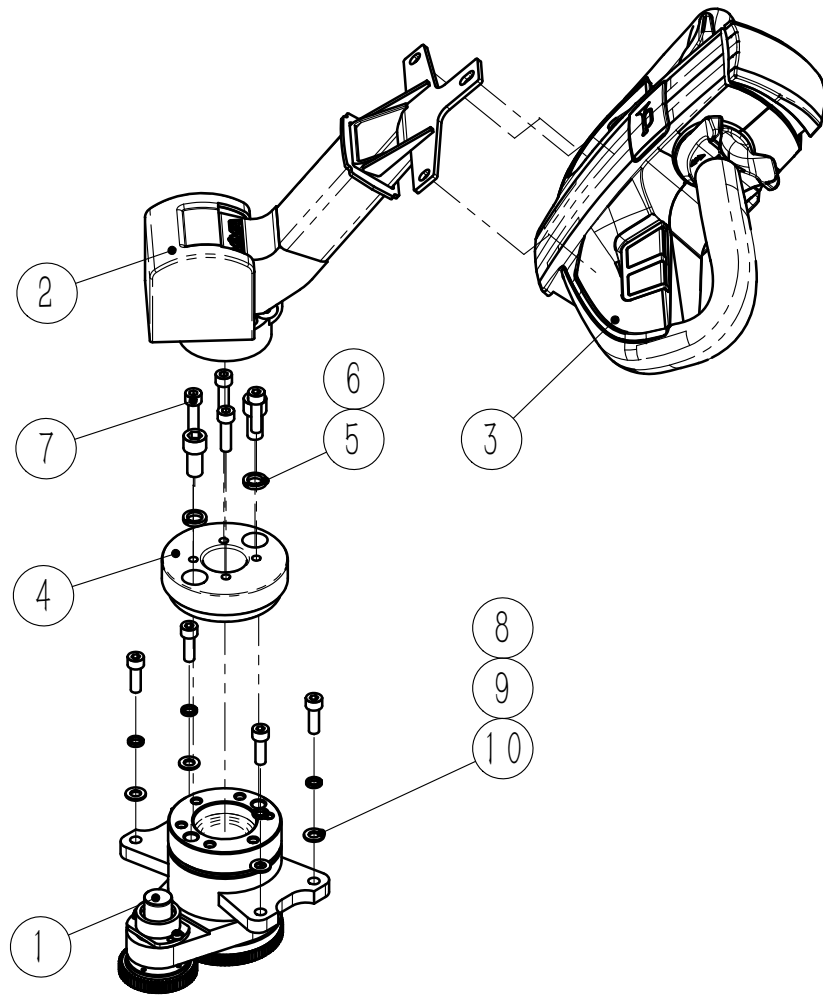
ME20/25



NO.	Parts No.	Name	Qty	Remarks
1	BDZ1.4.1	Steering pinion gear	1	
2	DZX24110.4.2	Connecting shaft	1	
3	DZX24110.4.3	Lower housing of potentiometer	1	
4	DZX24110.4.4.1	Lower mounting plate	1	
5	BDZ1.4.4	Shaft end ring	1	
6	R22M 0505 W2160-1	Multi-turn digital potentiometer	1	
7	GB276 61804-2Z	Deep groove ball bearing	2	
8	GB77 M4×5	Hexagon socket set screw with flat end	2	
9	GB1096 5×5×25A	Normal flat key	1	
10	GB893.2 32	Reverse conca	1	
11	GB93 6	Spring washer	1	
12	GB70.1 M6×16	Hexagon socket cap screw	1	
13	GB70.2 M4×12	Hexagon socket button head screws	2	
14	GB93 4	Spring washer	2	
15				
16				
17				
18				
19				
20				
21				
22				
23				
24				

Fig.6-1 TEP25.5 Steering System

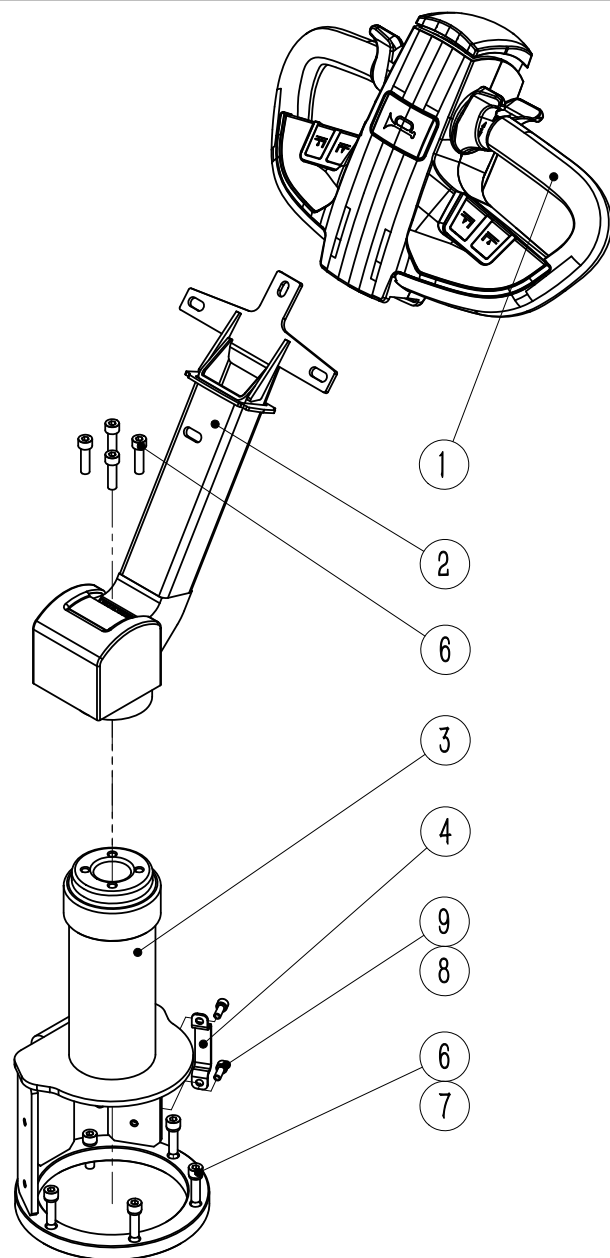
ME20/25



NO.	Parts No.	Name	Qty	Remarks
1	DZX24111.2	Upper steering part	1	
2	BCZ13	Control handle assembly	1	
3	BSB12	Handle assembly	1	
4	TE25.5.1F09	Connection block	1	
5	GB93 12	Spring washer	2	
6	GB70.1 M12×25	Hexagon socket cap screw	2	
7	GB70.1 M8×30	Hexagon socket cap screw	4	
8	GB70.1 M8×25	Hexagon socket cap screw	4	
9	GB93 8	Spring washer	4	
10	GB97.1 8	Flat washer	4	
11				
12				
13				
14				
15				
16				
17				
18				
19				
20				
21				
22				
23				
24				

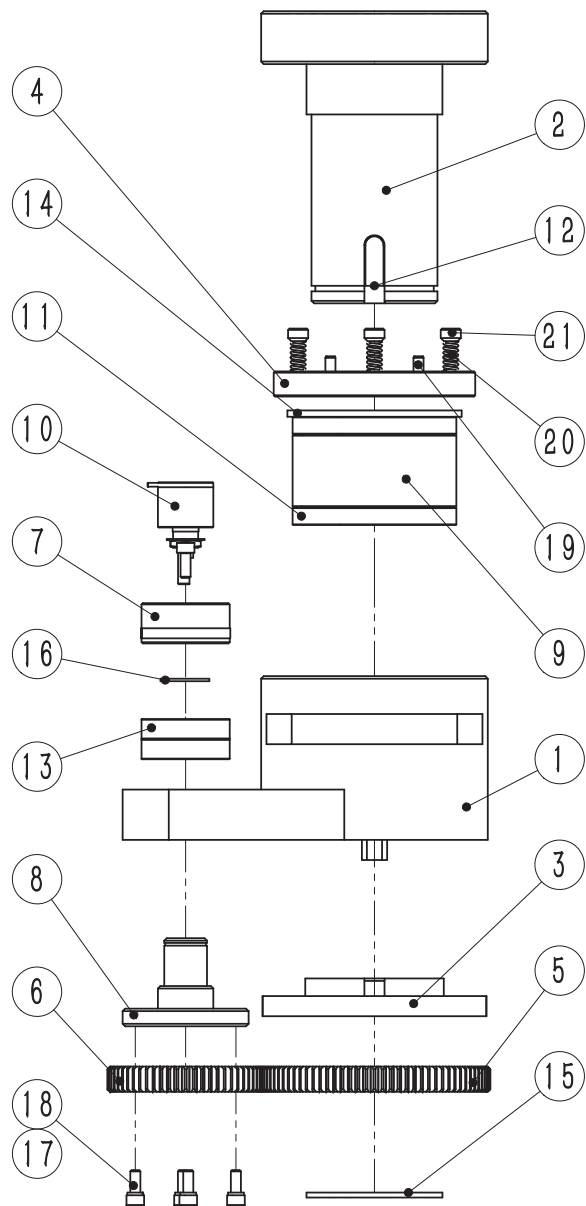
Fig.6-2 TEP25.5F08 Steering System

ME20/25F08



NO.	Parts No.	Name	Qty	Remarks
1	BSB12	Handle assembly	1	
2	BCZ11	Control handle assembly	1	
3	TEP25.5.1F08	Steering seat welding	1	
4	TB2025.1.12	Cable clamp	1	
5	QT0117	Medium guard coil	1	
6	GB70.1 M8×30	Hexagon socket cap screw	0	
7	GB93 8	Spring washer	6	
8	GB93 6	Spring washer	2	
9	GB70.1 M6×16	Hexagon socket cap screw	2	
10				
11				
12				
13				
14				
15				
16				
17				
18				
19				
20				
21				
22				
23				
24				

Fig.6-3 TEP25.5.1 Upper Steering Part

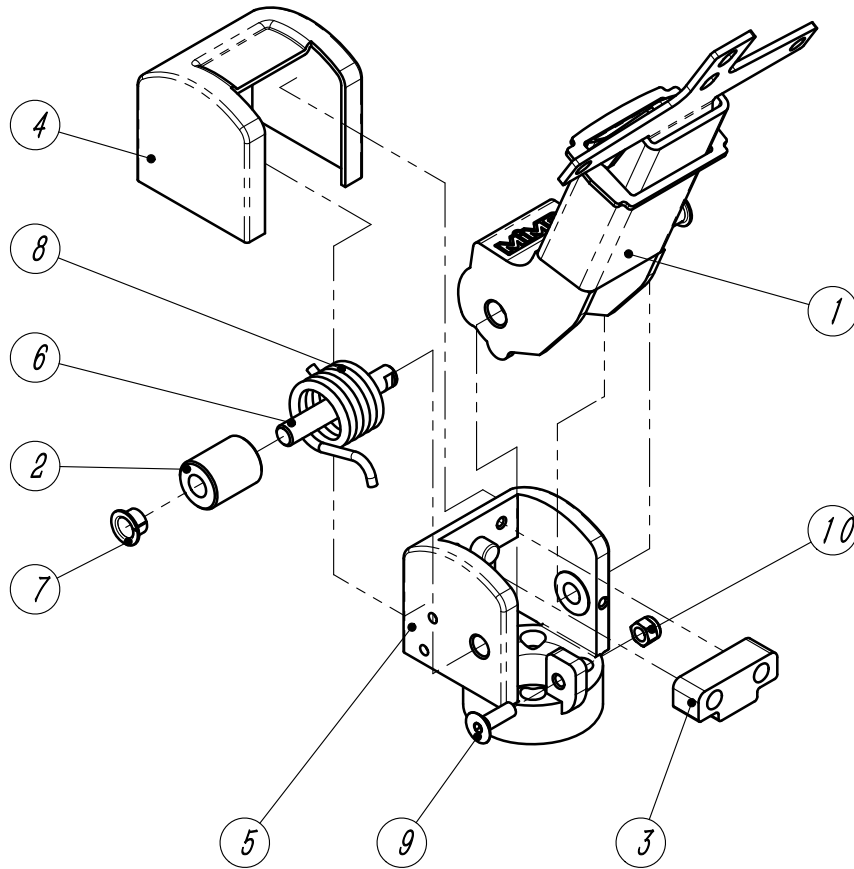


ME20/25

NO.	Parts No.	Name	Qty	Remarks
1	TEP25.5.1.1	Upper steering seat	1	
2	TEP25.5.1.2	Upper steering shaft welding	1	
3	DZX24110.2.3	Limited block	1	
4	TEP25.5.1.4	Friction plate	1	
5	DZX24110.2.5	Steering gear	1	
6	DZX24110.2.6	Steering pinion gear	1	
7	DZX24110.2.7	Potentiometer mounting plate		
8	DZX24110.2.8	Transition shaft	1	
9	TEP25.5.1.9	Check ring	1	
10	WDH22L 0505 W360	Digital potentionmeter	1	
11	GB276 61810-2Z	Deep groove ball bearing <sup>ø</sup>		
12	GB1096 8×7×20C	Normal flate key	1	
13	GB276 16003-2Z	Deep groove ball bearing <sup>ø</sup>		
14	GB893.1 65	Circlip for hole	1	
15	GB894.2 50	Circlip for shaft	1	
16	GB894.1 17	Circlip for shaft	1	
17	GB93 4	Spring washer	4	
18	GB70.1 M4×10	Hexagon socket cap screw <sup>w6</sup>		
19	GB119.2 4×10	Round pin	2	
20	GB2089 YA1×5×15	Cylindroid helical-coil comp <sup>6</sup> ression spring	6	
21	GB77 M8×5	Hexagon socket set screw with flat end	6	
22				
23				
24				

Fig.6-4 BCZ13 Control Handle Assembly

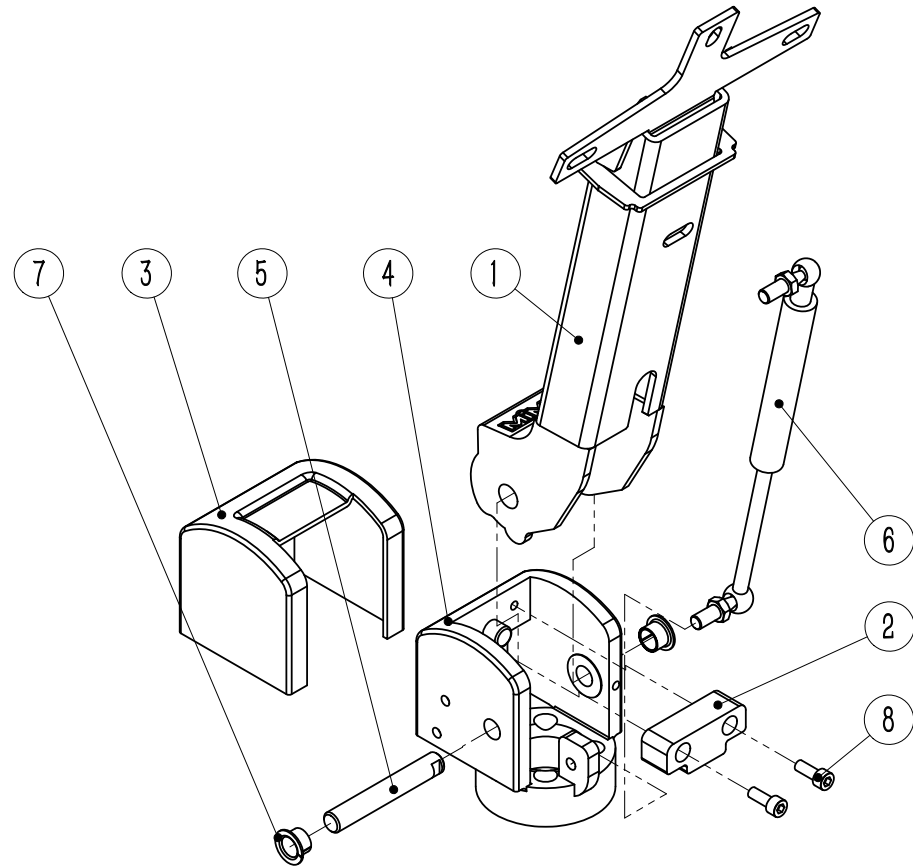
ME20/25



NO.	Parts No.	Name	Qty	Remarks
1	BCZ13.1	Control handle	1	
2	GT132835	Spacer bush	1	
3	BSB01.02	Cushion	1	
4	BSB01.03	Hand guard	1	
5	BSB01.04	Hand stents	1	
6	BSB01.05	Control handle pin shaft	1	
7	HZF121410	Sliding bearing	2	
8	BDZ1.5.7.3	Torsional spring	1	
9	GB70.3 M8×25	Hexagon countersunk head screw		
10	GB889.1 M8	I-shaped hexagon lock nut with non-metallic inser		
11				
12				
13				
14				
15				
16				
17				
18				
19				
20				
21				
22				
23				
24				

Fig.6-5 BCZ11 Control Handle Assembly

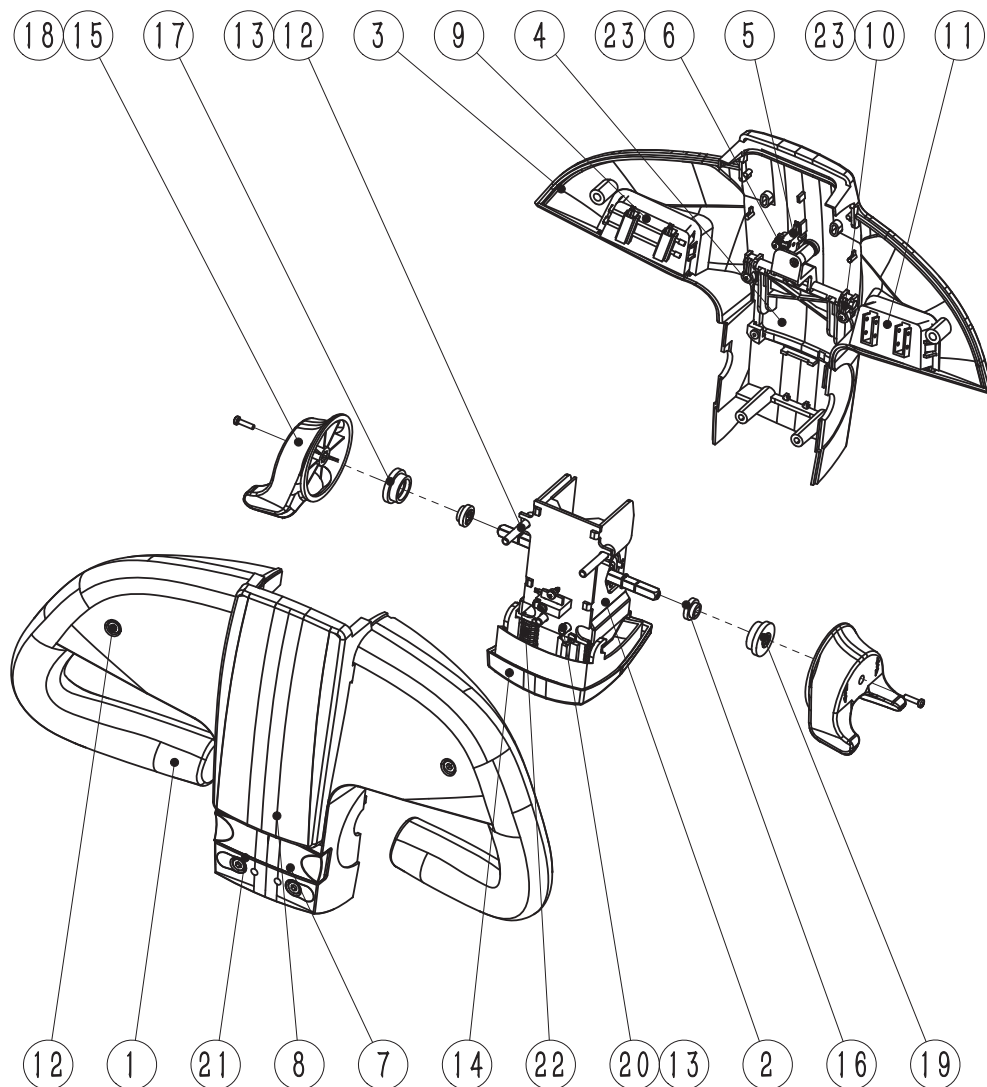
ME20/25F08



No.	Parts No.	Name	Qty	Remarks
1	BCZ11.1	Control handle	1	
2	BSB01.02	Cushion	1	
3	BSB01.03	Hand guard	1	
4	BSB01.04	Hand stents	1	
5	BSB01.05	Control handle pin shaft	1	
6	BQTH280	Gas spring	1	
7	HZF121410	Sliding bearing	2	
8	GB70.1 M6×16	Hexagon socket cap screw	2	
9				
10				
11				
12				
13				
14				
15				
16				
17				
18				
19				
20				
21				
22				
23				
24				

Fig.6-6 BSB12 Handle Assembly

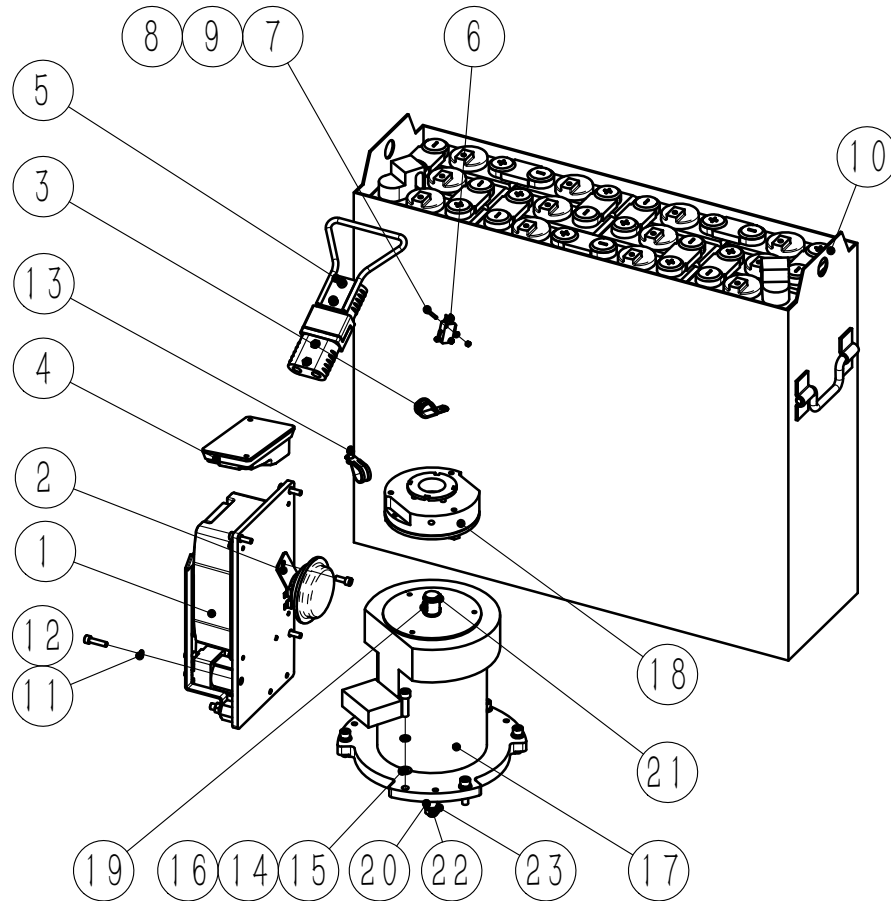
ME20/25 ME20/25F08



No.	Parts No.	Name	Qty	Remarks
1	BSB10.07.01	Handle chassis	1	
2	BSB10.07.13	Accelerator assembly	1	
3	BSB10.07.02	Handle top cover	1	
4	BSB10.07.04	Horn button	1	
5	G905-300G00W3	Microswitch	2	
6	BSB10.07.09	Horn switch fixing card	2	
7	BSB10.07.08	Turtle rabbit switch	1	
8	BSB10.07.03	Rear cover	1	
9	BSB10.07.07	Button assembly	1	
10	BSB10.07.10	Horn shaft card	2	
11		Button assembly	1	
12	GB70.1 M5×30	Hexagon socket cap screw	4	
13	GB97.1 5	Flat washer	4	
14	BSB10.07.05 BSB10.07.14	Belly switch	1	
15	BSB10.07.06	Accelerator button	2	
16	BSB10.07.11	Steel rod seat ring I	2	
17	BSB10.07.12	Steel rod seat ring II	2	
18	GB818 M3×12	Cross recess pan head screw	2	
19	GB896 5	Split washer	4	
20	GB70.2 M5×10	Hexagon socket cap screw	2	
21	GB70.1 M5×55	Hexagon socket cap screw	2	
22	BSB10.07.15	Belly switch spring	2	
23	GB845 ST2.9×9.5	Cross recessed pan head tapping screw	4	
24				

Fig.7-1 TEP25.7 Electrical System

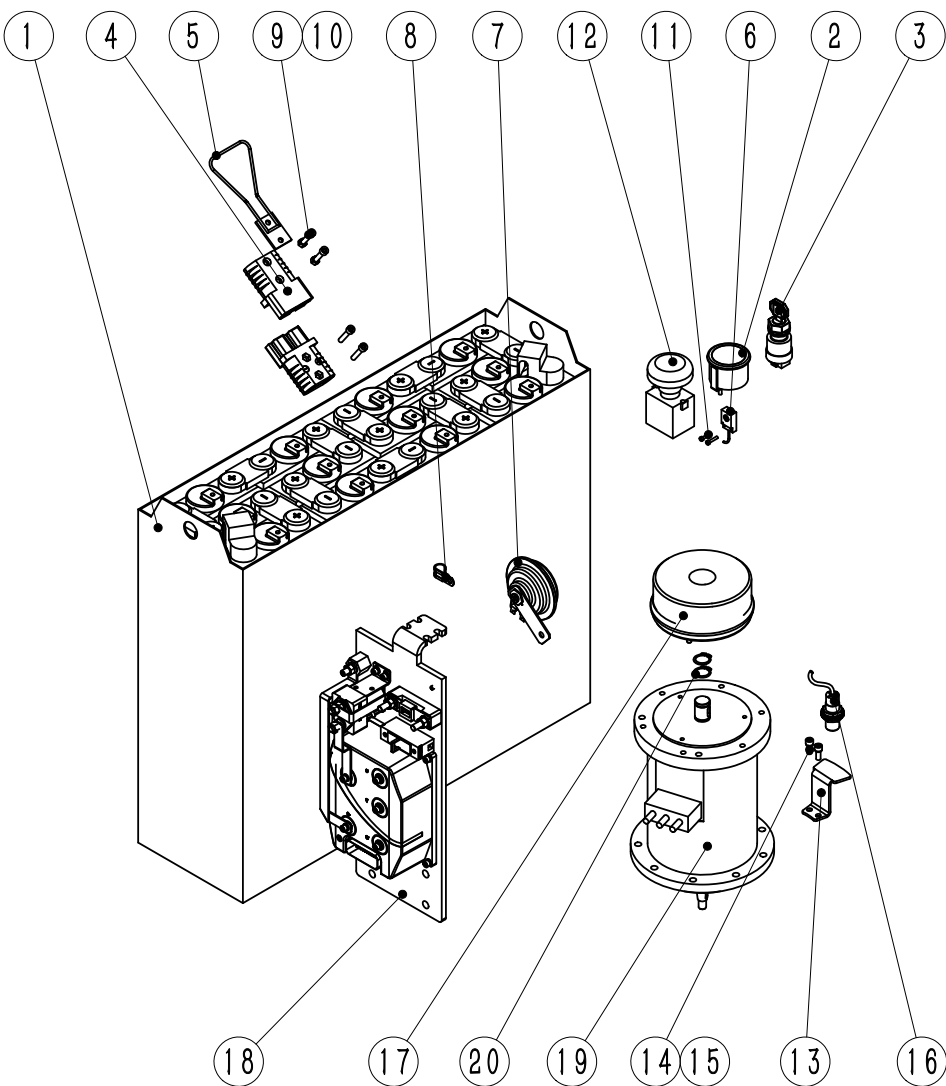
ME20/25



NO.	Parts No.	Name	Qty	Remarks
1	1232E-2121-TEP25	Electronic control assembly		
2	DL2280-24V	Electric horn	1	
3	RSC1-19	Wire clip	2	
4	1220C-2201	Controller	1	
5	CJQLS-01-ZP	Connector handle assembly		
6	RV-165-1C25-1	Control handle microswitch assembly		
7	GB818 M3×20	Cross recess pan head screw		
8	GB6170 M3	I-type hexagon nut	2	
9	GB97.1 3	Flat washer	2	
10	QDC24-210-3C	Traction battery pack	1	
11	GB93 6	Spring washer	4	
12	GB70.1 M6×25	Hexagon socket cap screw	4	
13	GB70.1 M6×16	Hexagon socket cap screw	2	
14	GB93 8	Spring washer	6	
15	GB97.1	Flat washer	6	
16	GB70.1 M8×30	Hexagon socket cap screw	6	
17	XQJ1.5-BYT7	Drive motor	1	
18	G302-REB0910(20)12PF	Electromagnetic clutch	1	
19	GB1096 6×6×16A	Normal flat key	1	
20	GB1096 6×6×18A	Normal flat key	1	
21	GB894.1 20	Circlip for shaft	2	
22	GB6170 M10	I-type hexagon nut	1	
23	GB97.1 10	Flat washer	1	
24				



Fig.7-2 TEP25.7F08 Electrical System



ME20/25F08

NO.	Parts No.	Name	Qty	Remarks
1	QDC24-210-1	Traction battery pack	1	
2	QLB2.847.002	24V hour meter	1	
3	JK421	Key switch	1	
4	ZC61-200 02	Connector	2	
5	CJQLS-01	Connector handle	1	
6	BEFBK-NE08PA-2M	Proximity switch	1	
7	DL2280-24V	Electric horn	1	
8	RSC1-12	Wire clip	1	
9	GB70.1 M6×30	Hexagon socket cap screw <sup>4</sup>		
10	GB6170 M6	I-type hexagon nut	2	
11	GB70.1 M3×16	Hexagon socket cap screw <sup>2</sup>		
12	ZJK125A	Emergency switch	1	
13	TEP25.1.14F08	Induction plate of proximity switch		
14	GB70.1 M6×16	Hexagon socket cap screw <sup>2</sup>		
15	GB93 6	Spring washer	2	
16	BIY18-ME05PB-2M	Proximity switch	1	
17	G302-REB0910(20)12PF	Electromagnetic clutch	1	
18	AC0-TEP25	Electronic control assembly		
19	XQJ1.5-BYT4	Drive motor	1	
20	GB894.2	Circlip for shaft	2	
21				
22				
23				
24				

Fig.7-3 TEP25.7.10(1220C) Electrical schematic diagram

ME20/25

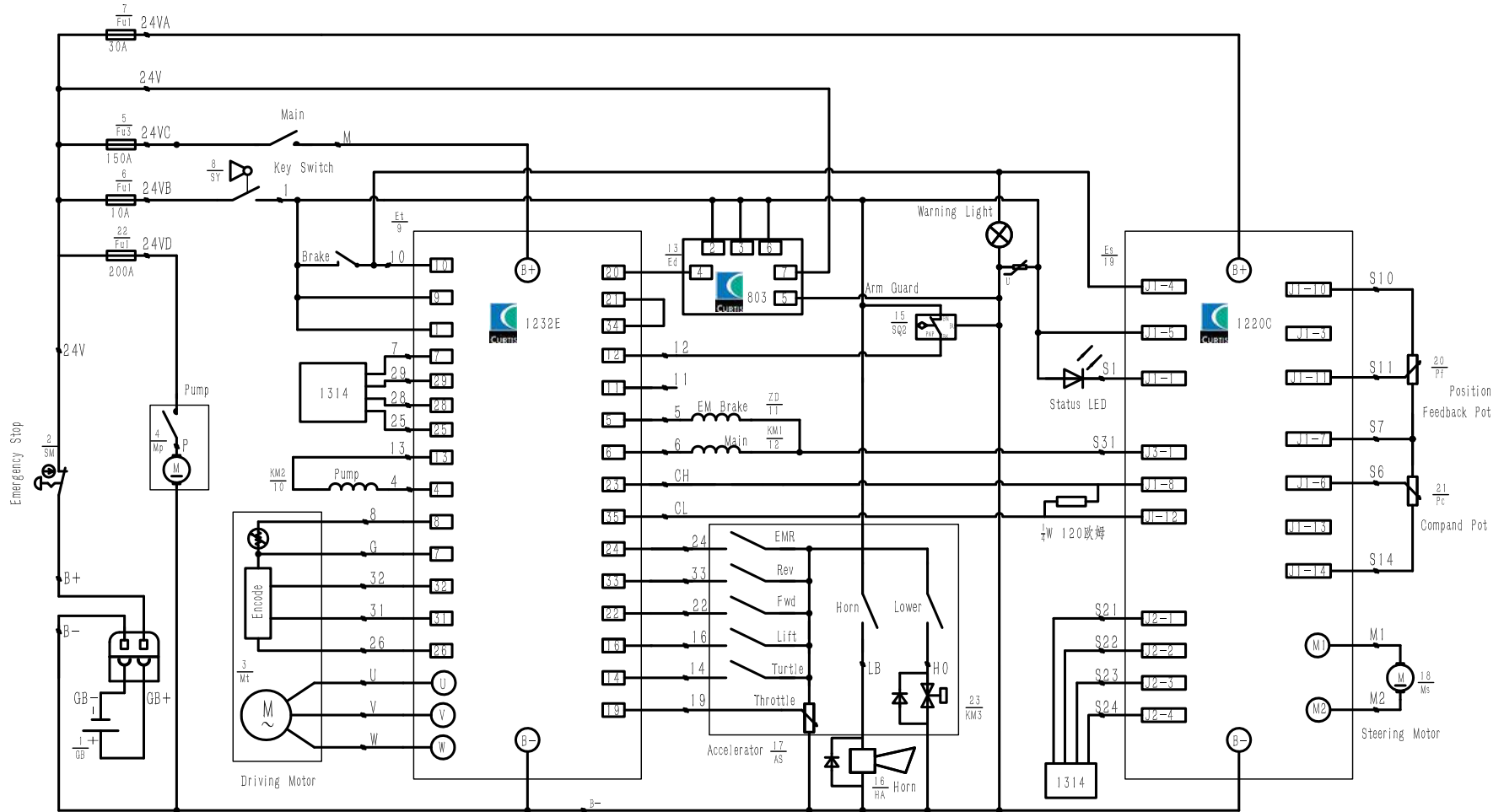


Fig.7-4 TEP25.7.10F08 Electrical schematic diagram

ME20/25F08

