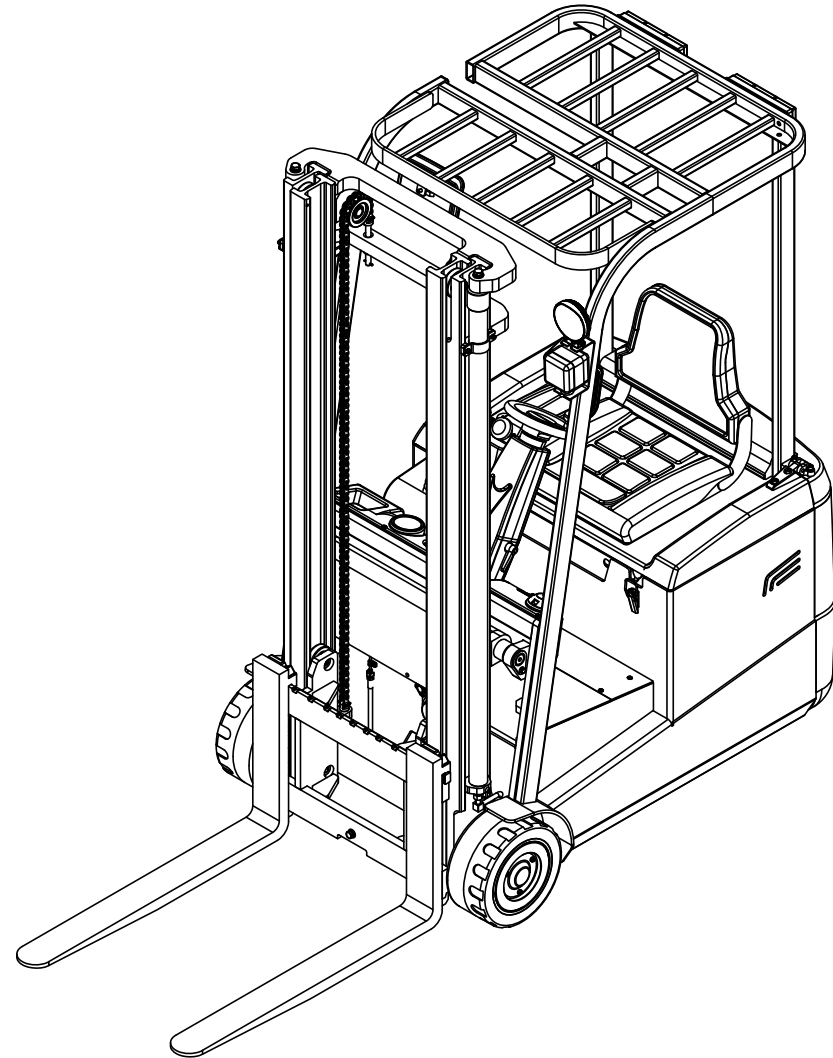


MIMA[®]

MATERIAL HANDLING EQUIPMENT
DESIGNER & MANUFACTURER

PARTS LIST

Electric counter balance forklift TKA



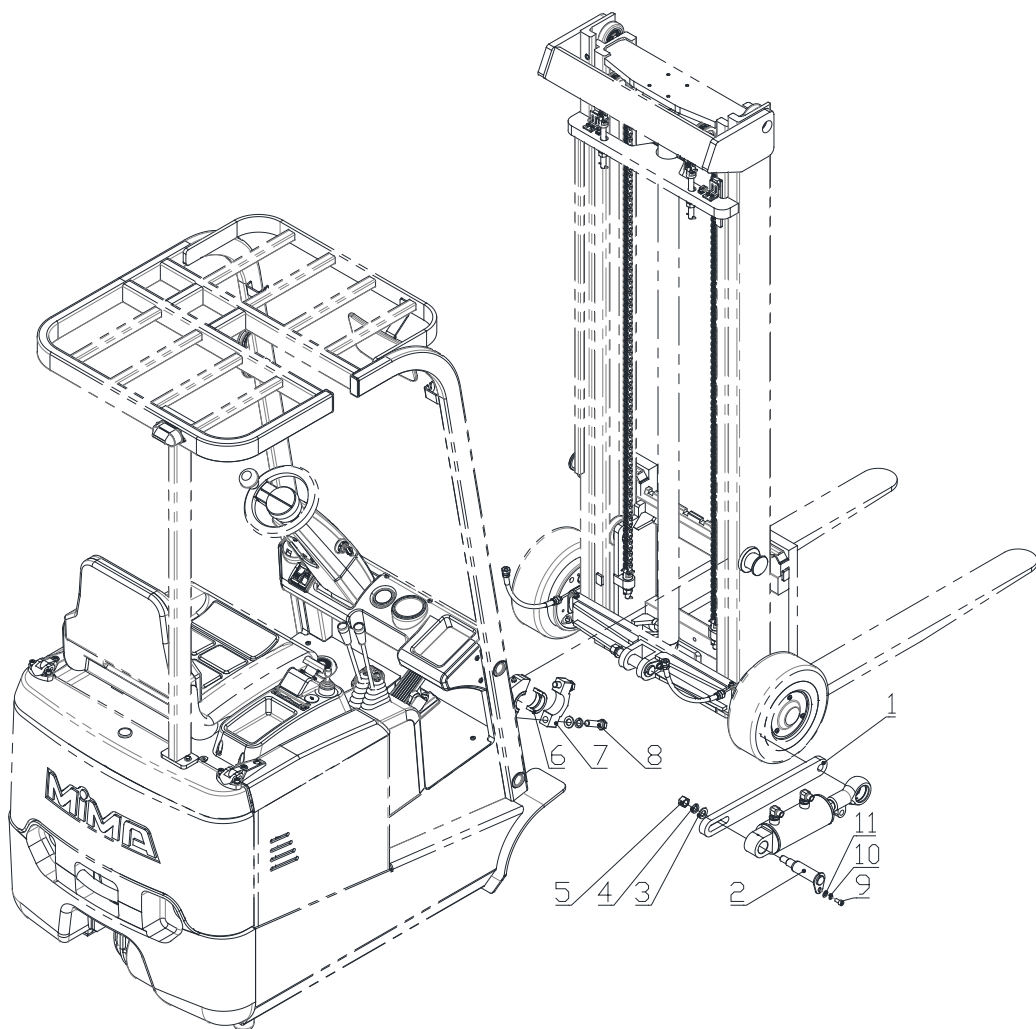
INSTRUCTION

- 1.This parts list include the main parts of the electric counter balance forklift TKA;
- 2.Parts change indicates the time, such as "-2008.8" means that the parts are used until August 2008, "2006.10 -" means that the parts are used since October 2006;
- 3.When user purchase the parts, please write clearly the model and series No. of the electric forklift,the item No., name and quantity of the required part;
- 4.To ensure quality,please use our parts when repair and change the parts;
- 5.We'll improve or change some part to improve the quality of the forklift, this parts list can't modify one by one on time, thanks for understand. Please contact with our sales manager or distributor for details.

Contents

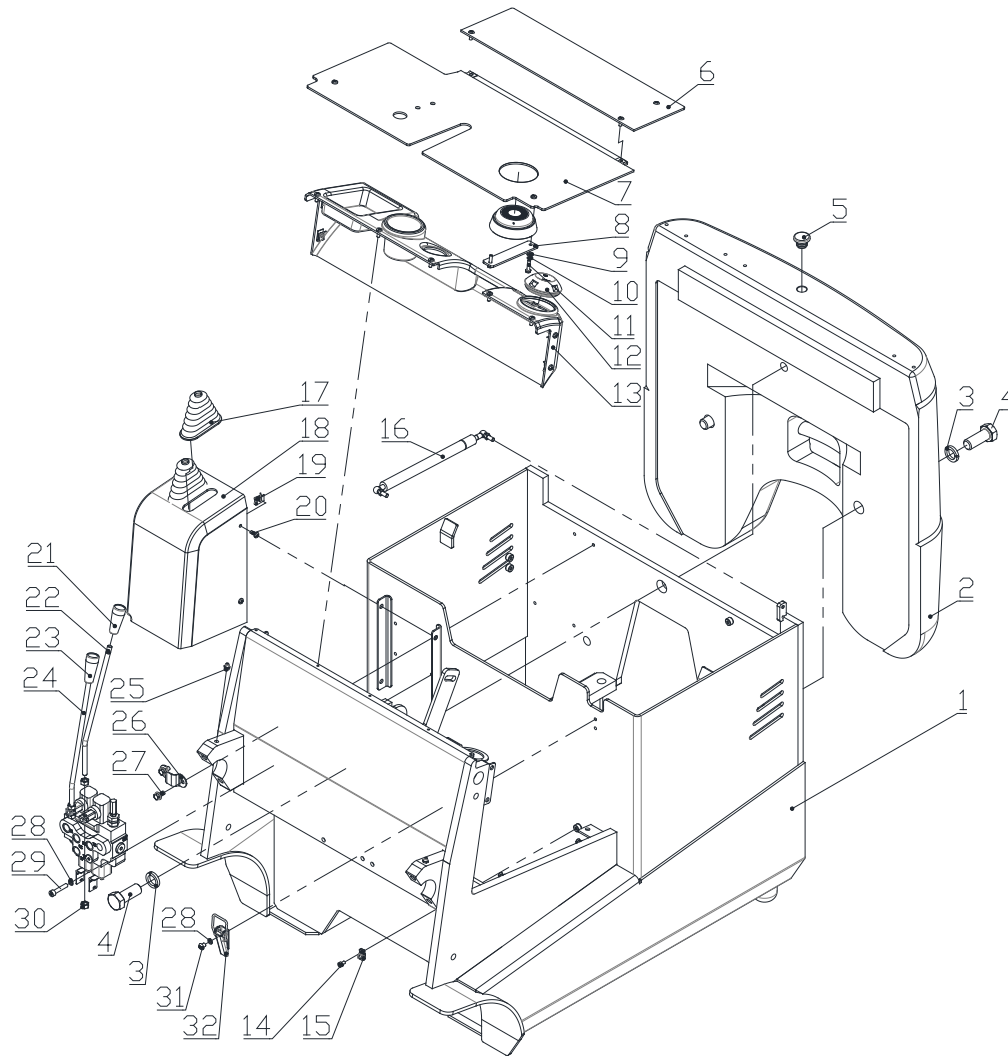
Fig.1 Body and lifting system connection of TKA10 -----	1
Fig.2 Body and lifting system connection of TKA15 -----	2
Fig.3 Frame and its accessories of TKA10 -----	3
Fig.4 Frame and its accessories of TKA15 -----	5
Fig.5 Overhead guard assembly -----	7
Fig.6 Battery cover assembly -----	8
Fig.7 Lifting system of TKA10 -----	9
Fig.8 Lifting system of TKA15 -----	12
Fig.9 Hydraulic system of TKA10 -----	13
Fig.10 Hydraulic system of TKA15 -----	14
Fig.11 Oil tank assembly of TKA15 -----	15
Fig.12 Drive assembly of TKA10 -----	16
Fig.13 Gearbox assembly of TKA10 -----	17
Fig.14 Drive assembly of TKA15 -----	19
Fig.15 Steering feedback component -----	20
Fig.16 Steering wheel assembly -----	21
Fig.17 Braking assembly -----	22
Fig.18 Foot brake assembly -----	23
Fig.19 Electrical system -----	24

Fig.1 Body and lifting system connection of TKA10



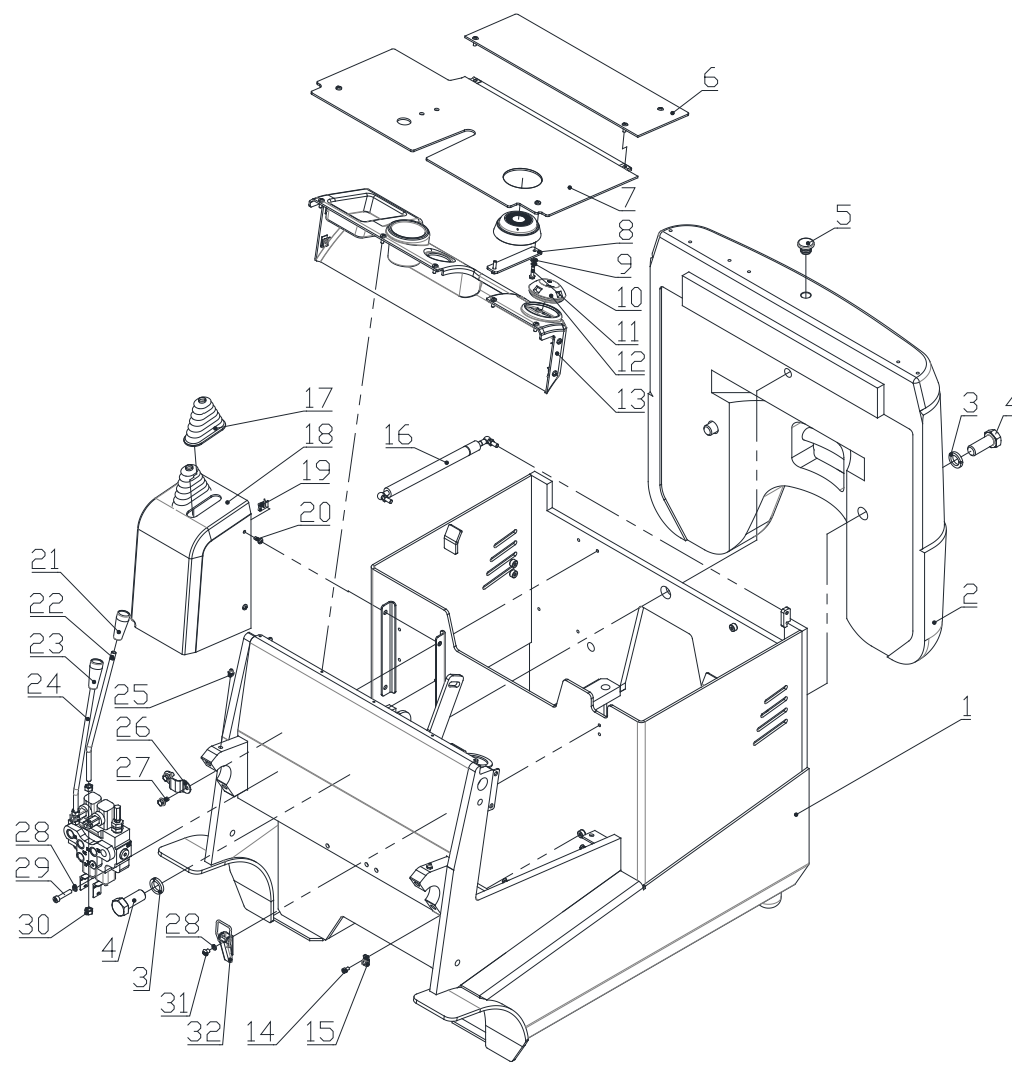
TKA10				
NO.	CODE	DESIGNATION	QTY.	REMARKS
1	1KA210L-A0005	Insurance lever	1	
2	TKA15.1.11	Tilt cylinder pin shaft welding	2	
3	GB97.1 16	Flat washers	6	
4	GB93 16	Spring washer	6	
5	GB6170 M16	Type 1 hexagon nut	2	
6	TK420.2.7	Bushing	4	
7	1KA210L-A0003	Support cover	2	
8	GB5786 M16×1.5×60	Hex head bolt	4	
9	GB5783 M8×16	Hex head bolt	2	
10	GB93 8	Spring washer	2	
11	GB97.1 8	Flat washers	2	

Fig.3 Frame and its accessories of TKA10



TKA10				
NO.	CODE	DESIGNATION	QTY.	REMARKS
1	1KA210L-A1000	Frame welding	1	
2	TKA10.1.5	Counterweight	1	
3	GB93 24	Spring washer	3	
4	GB5783 M24×60	Hex head bolt	3	
5	TKA15.1.10	Screw cap	1	
6	1KA210L-A0001	Rear pedal	1	
7	1KA210L-A3100	Front pedal welding	1	
8	1KA210L-A0006	Speaker mounting plate	1	
9	GB97.1 6	Flat Washers	2	
10	GB93 6	Spring washer	2	
11	GB5783 M6×25	Hex head bolt	2	
12	MF15.1.6.3	Rubber cover	1	
13	1KA210L-H0001	Front cover	1	
14	GB70.1 M6×10	Hexagon socket head cap screw	5	
15	RSC1-6	Line card	5	
16	BQTH600	Gas Spring	1	
17	6048-10021	Boots	2	
18	1KA210L-H0002	Multiple valve housing	1	
19	LP-133 M6	M6 reed nut	18	
20	GB818 M6×16	Cross recessed pan head screws	18	
21	Q60H7-40631	Lifting handle head	1	
22	1KA210L-K0001	Lifting joystick	1	
23	Q60H7-40621	Tilting handle head	1	
24	1KA210L-K0002	Tilting joystick	1	
25	JB7940.1 M10×1	Straight injection cup	2	
26	TF15.7.9	Large line clamp	1	
27	GB5789 M8×16	Hexagon flange bolt	2	
28	GB93 8	Spring washer	5	
29	GB70.1 M8×40	Hexagon socket head cap screw	3	

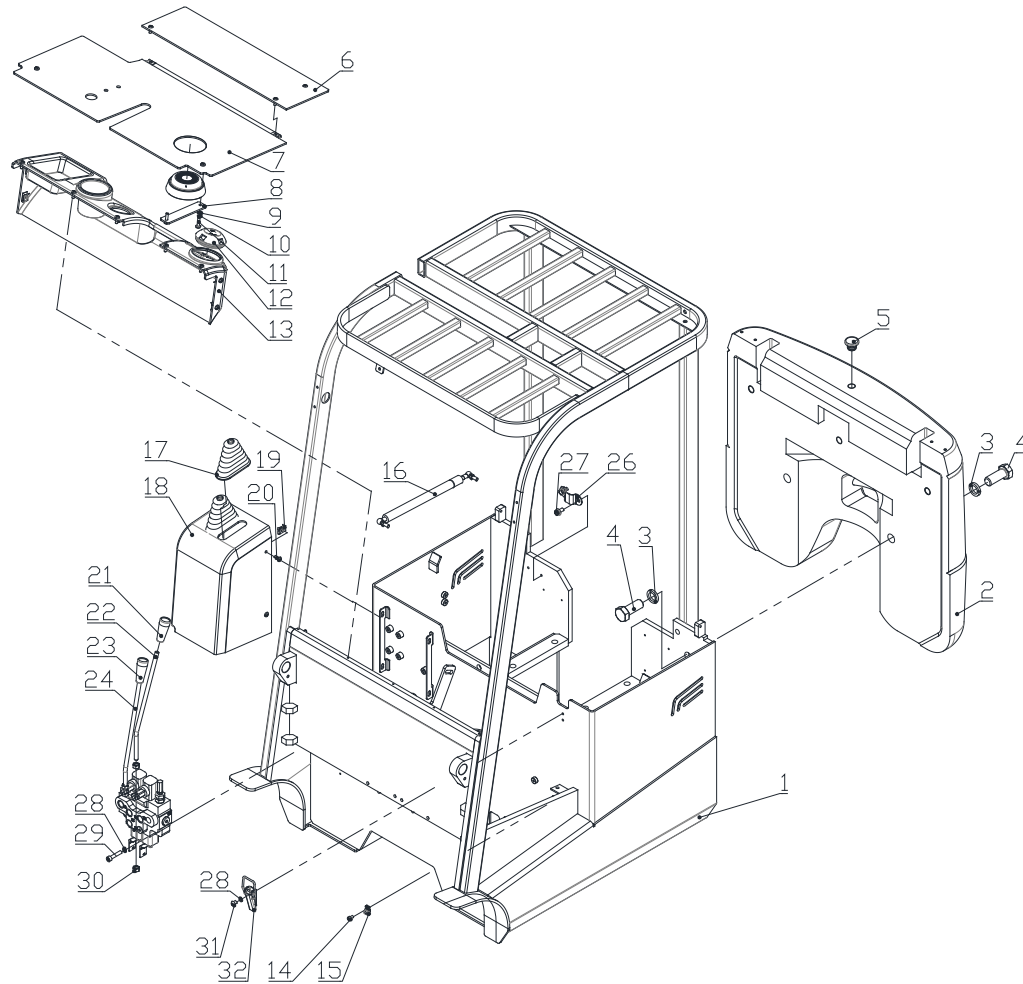
Fig.3 Frame and its accessories of TKA10



TKA10

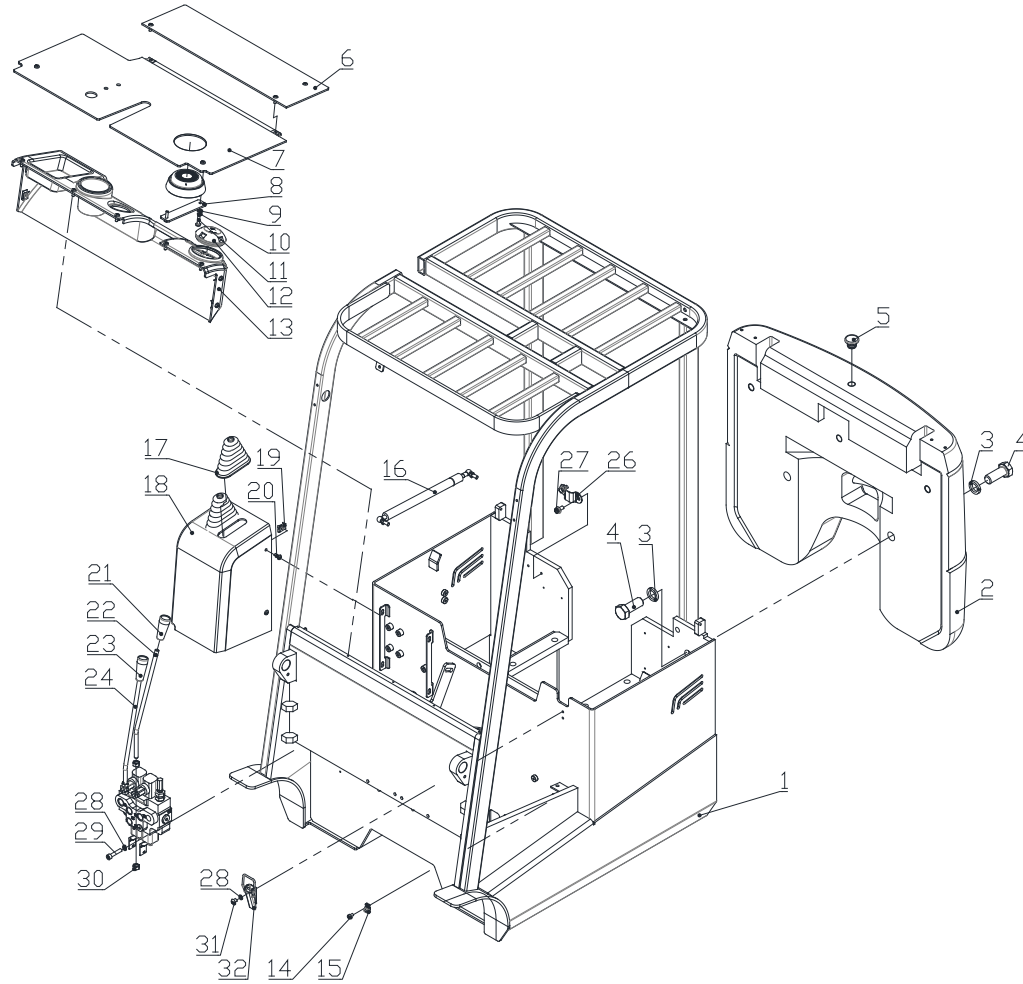
NO.	CODE	DESIGNATION	QTY.	REMARKS
30	GB6170 M10	Type 1 hexagon nut	4	
31	GB70.2 M8×10	Hexagon flat round head screw	2	
32	DQ02	Buckle	1	

Fig.4 Frame and its accessories of TKA15



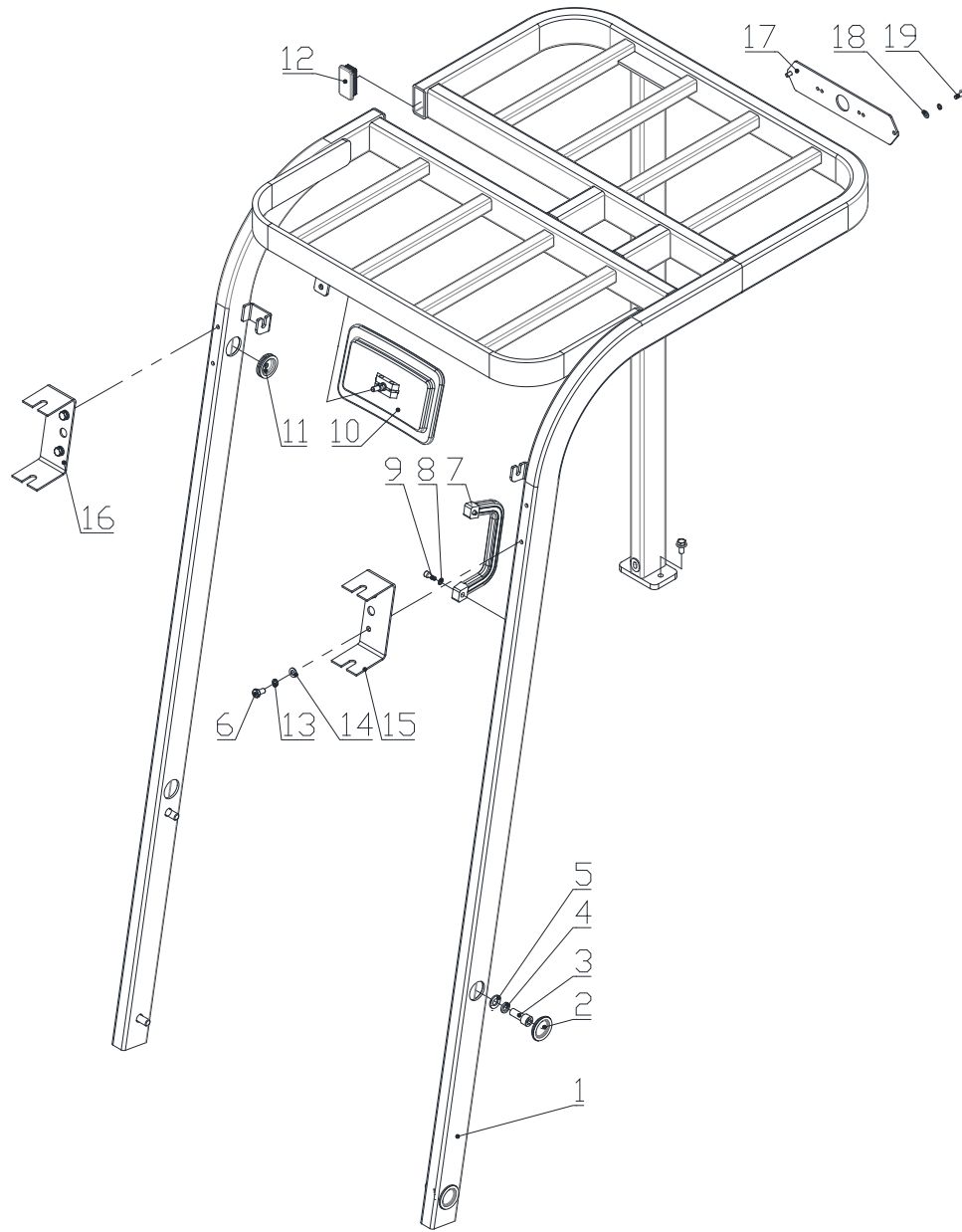
TKA15				
NO.	CODE	DESIGNATION	QTY.	REMARKS
1	TKA15.1.0F09	Body welding	1	
2	TKA15.1.6F09	Counterweight	1	
3	GB93 24	Spring washer	4	
4	GB5783 M24×60	Hex head bolt	4	
5	TKA15.1.10	Screw cap	1	
6	TKA15.1.5.2F09	Rear pedal	1	
7	TKA15.1.5.1F09	Front pedal welding	1	
8	1KA210L-A0006	Speaker mounting plate	1	
9	GB97.1 6	Flat Washers	2	
10	GB93 6	Spring washer	2	
11	GB5783 M6×25	Hex head bolt	2	
12	MF15.1.6.3	Rubber cover	1	
13	TKA15.1.8F09	Front cover	1	
14	GB70.1 M6×10	Hexagon socket head cap screw	5	
15	RSC1-6	Line card	5	
16	BQTH600	Gas spring	2	
17	6048-10021	Boots	2	
18	TKA15.1.7F09	Multiple valve housing	1	
19	LP-133 M6	M6 reed nut	18	
20	GB818 M6×16	Cross recessed pan head screws	18	
21	Q60H7-40631	Lifting handle head	1	
22	1KA210L-K0001	Lifting joystick	1	
23	Q60H7-40621	Tilting handle head	1	
24	1KA210L-K0002	Tilting joystick	1	
25	JB7940.1 M10×1	Straight injection cup	2	
26	TF15.7.9	Large line clamp	1	
27	GB5789 M8×16	Hexagon flange bolt	2	
28	GB93 8	Spring washer	5	
29	GB70.1 M8×40	Hexagon socket head cap screw	3	

Fig.4 Frame and its accessories of TKA15



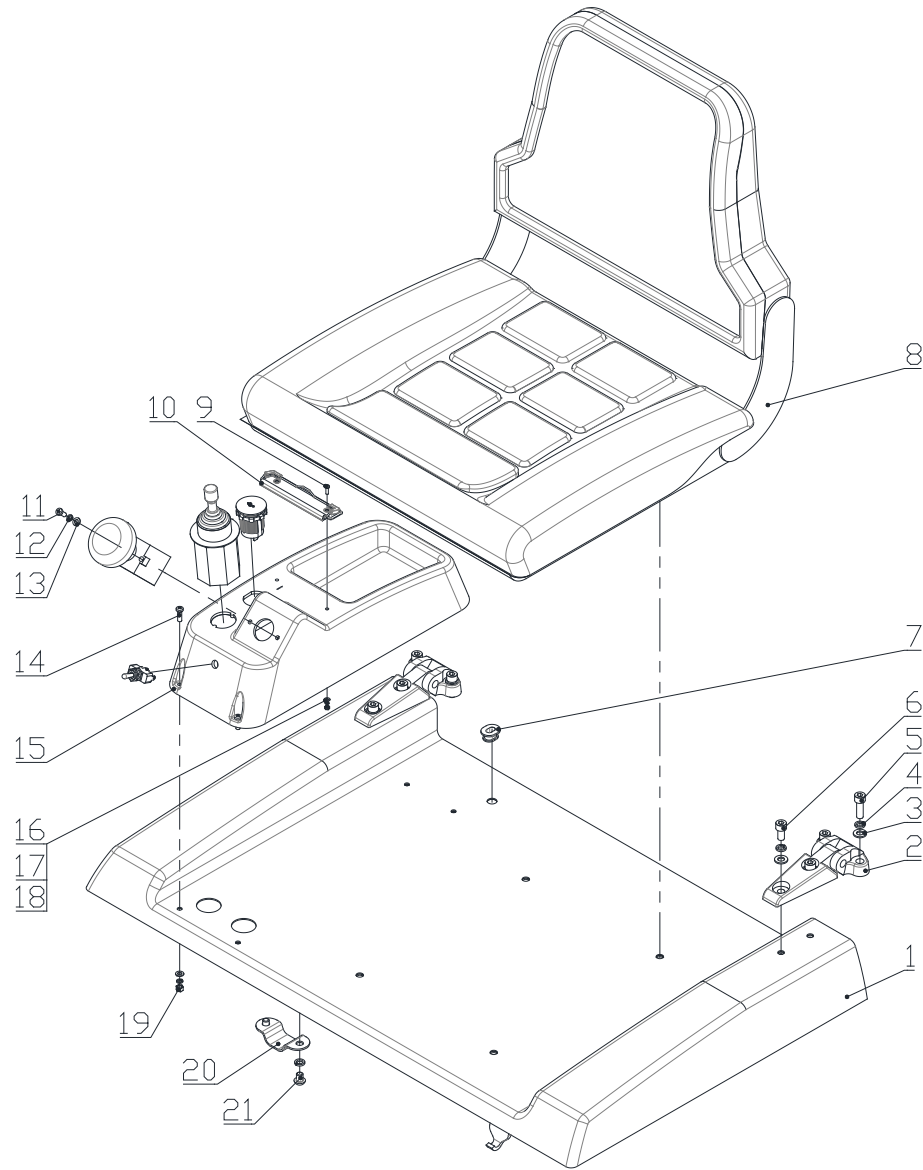
TKA15				
NO.	CODE	DESIGNATION	QTY.	REMARKS
30	GB6170 M10	Type 1 hexagon nut	4	
31	GB70.2 M8×10	Hexagon flat round head screw	2	
32	DQ02	Buckle	1	

Fig.5 Overhead guard assembly



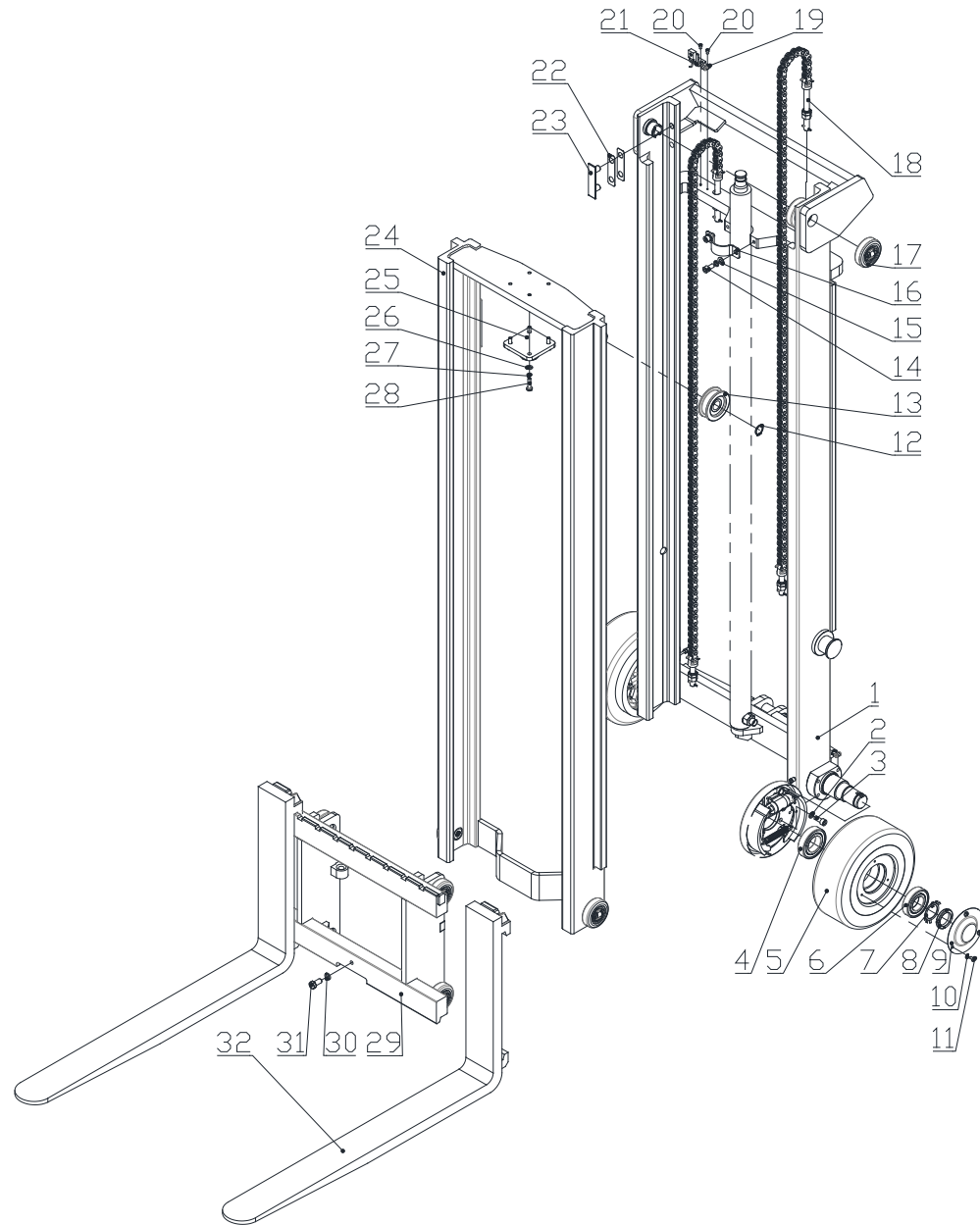
TKA				
NO.	CODE	DESIGNATION	QTY.	REMARKS
1	1KA210L-G1000	Overhead guard welding	1	TKA10
	TKA15.1.0F09	Body welding	1	TKA15
2	MFQ-35	Rubber sealed loop	4	TKA10
3	GB70.1 M16×30	Hexagon socket head cap screw	4	TKA10
4	GB93 16	Spring washer	4	TKA10
5	GB97.1 16	Flat Washers	4	TKA10
6	GB5783 M8×16	Hex head bolt	6	TKA10
	GB5783 M8×16	Hex head bolt	4	TKA15
7	LS01	Handle	1	
8	GB93 6	Spring washer	6	
9	GB70.1 M6×16	Hexagon socket head cap screw	2	
10	EQ140	Rearview mirror assembly	1	
11	TK2030.8.8	Threading rubber ring	2	TKA10
12	RC6030MC	Rectangular plug	2	
13	GB93 8	Spring washer	6	TKA10
	GB93 8	Spring washer	4	TKA15
14	GB97.1 8	Flat washers	6	TKA10
	GB97.1 8	Flat washers	4	TKA15
15	TK2030.1.2.4	Headlamp holder (left)	1	
16	TK2030.1.2.5	Headlamp holder (right)	1	
17	TKA15.7.2	Taillight fixing plate	2	
18	GB97.1 6	Flat washers	4	
19	DB-S M6×16	Inverted hexagon screw	4	

Fig.6 Battery cover assembly



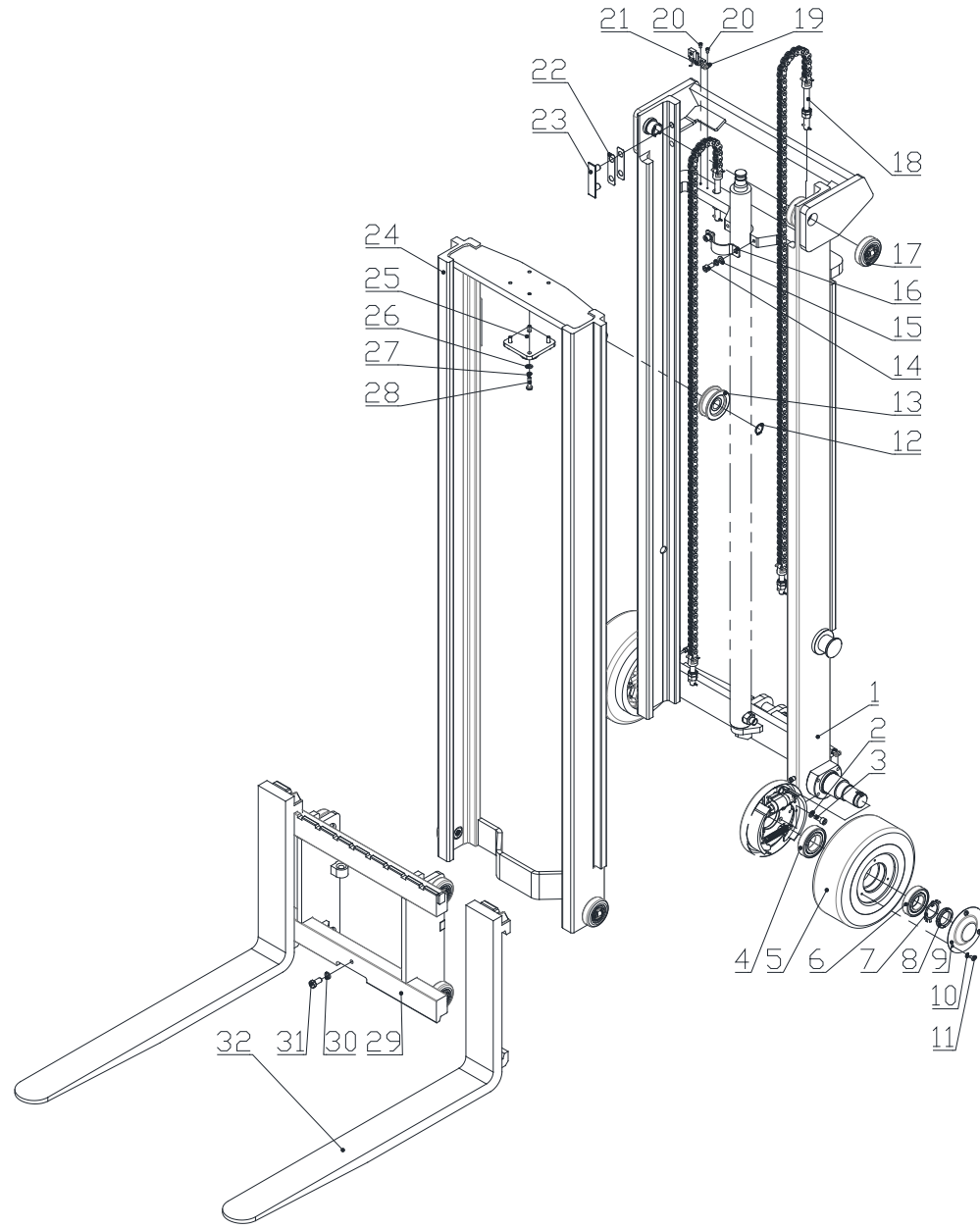
TKA				
NO.	CODE	DESIGNATION	QTY.	REMARKS
1	1KA210L-H1100	Battery cover welding	1	TKA10
	TKA15.1.4.1F09	Battery cover welding	1	TKA15
2	TKA10.1.8	AB hinge	2	
3	GB97.1 8	Flat washers	8	
4	GB93 8	Spring washer	12	
5	GB70.1 M8×25	Hexagon socket head cap screw	4	
6	GB70.1 M8×16	Hexagon socket head cap screw	4	
7	TF15.1.18	Upper plate sheath	1	
8	BF1-1	Seats	1	
9	GB818 M3×10	Cross recessed pan head screws	2	
10	120J	Folder	1	
11	GB818 M5×12	Cross recessed pan head screws	2	
12	GB93 5	Spring washer	6	
13	GB97.1 5	Flat washers	6	
14	GB818 M5×16	Cross recessed pan head screws	4	
15	1KA210L-H0003	Battery cover cover	1	
16	GB97.1 3	Flat washers	2	
17	GB93 3	Spring washer	2	
18	GB6170 M3	Type 1 hexagon nut	2	
19	GB6170 M5	Type 1 hexagon nut	4	
20	TF15.7.9	Large line clamp	2	
21	GB70.2 M8×10	Hexagon flat round head screws	4	

Fig.7 Lifting system of TKA10



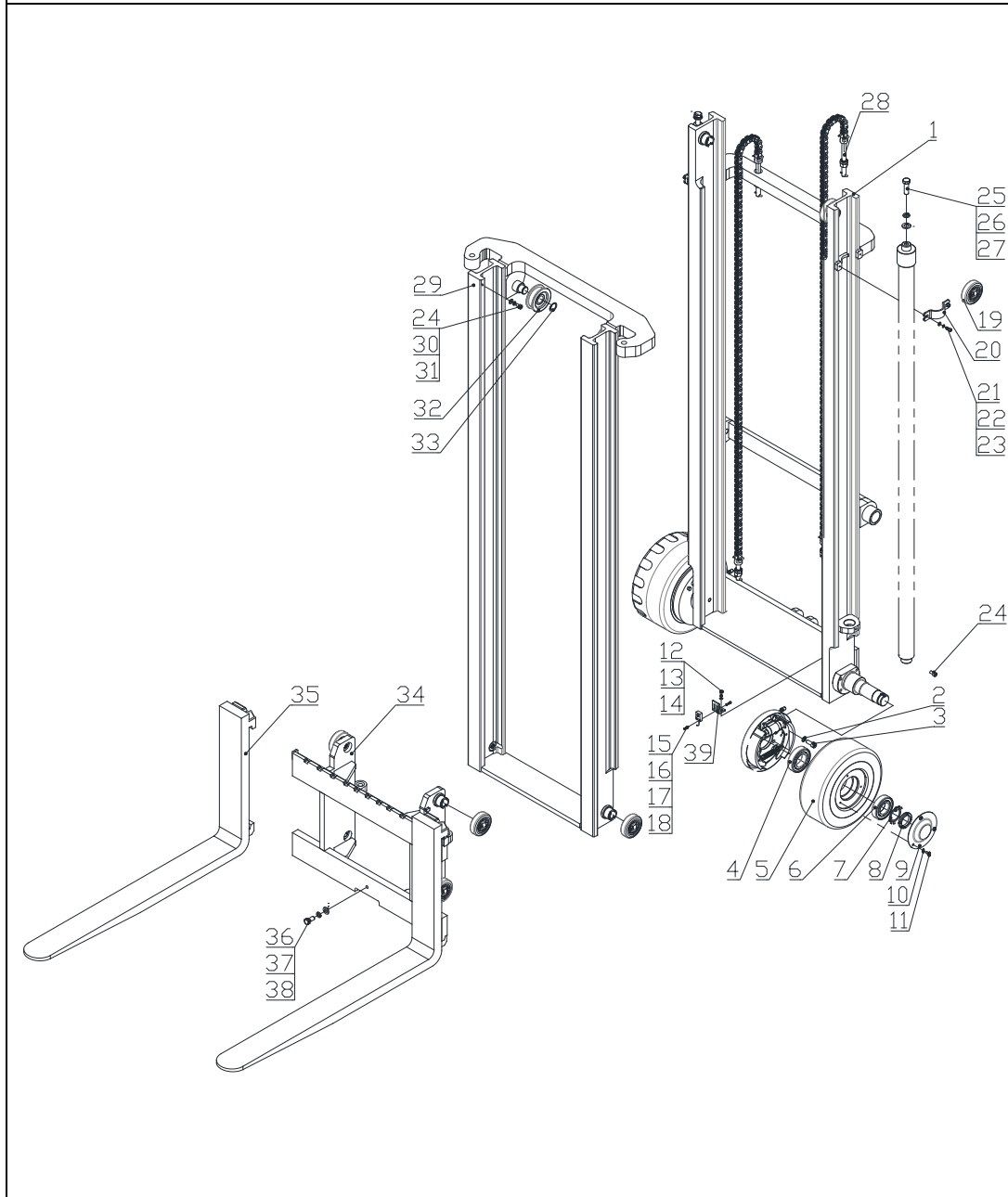
TKA10				
NO.	CODE	DESIGNATION	QTY.	REMARKS
1	1KA210L-B1000	External mast welding	1	
2	GB93 10	Spring washer	8	
3	GB70.1 M10×25	Hexagon socket head cap screw	8	
4	GB276 6209-2Z	Deep groove ball bearings	2	
5	BCL285×100B	Bearing wheel	2	
6	GB276 6208-2Z	Deep groove ball bearings	2	
7	GB858 39	Round nut with stop washer	2	
8	GB810 M39×1.5	Small round nut	2	
9	TF15.1.14.2	Front wheel cover	2	
10	GB93 6	Spring washer	6	
11	GB818 M6×10	Cross recessed pan head screws	6	
12	GB894.1 25	Shaft elastic ring	2	
13	780305K2-00	Sprockets	2	
14	GB70.1 M10×20	Hexagon socket head cap screw	2	
15	GB97.1 10	Flat washers	2	
16	TBD10.1.10	Cylinder clamp	1	
17	NL078.3.00R1-00.1	Composite roller body	8	
18	LH1223-93	Lifting chain set	2	
19	RSC1-6	Line card	4	
20	GB70.1 M5×8	Hexagon socket head cap screw	6	
21	1KA210L-B2000	Proximity switch bracket	2	
22	TB2025.2.1.4	Adjusting washer	若干	
23	TB2025.2.1.3	Limit slider	2	
24	1KA210L-D1000	Inner mast welding	1	
25	1KA210L-D2000	Piston rod seat welding	1	
26	GB97.1 8	Flat washers	4	
27	GB93 8	Spring washer	4	
28	GB5783 M8×30	Hex head bolt	4	
29	1KA210L-F1000	Fork carrier welding	1	

Fig.7 Lifting system of TKA10



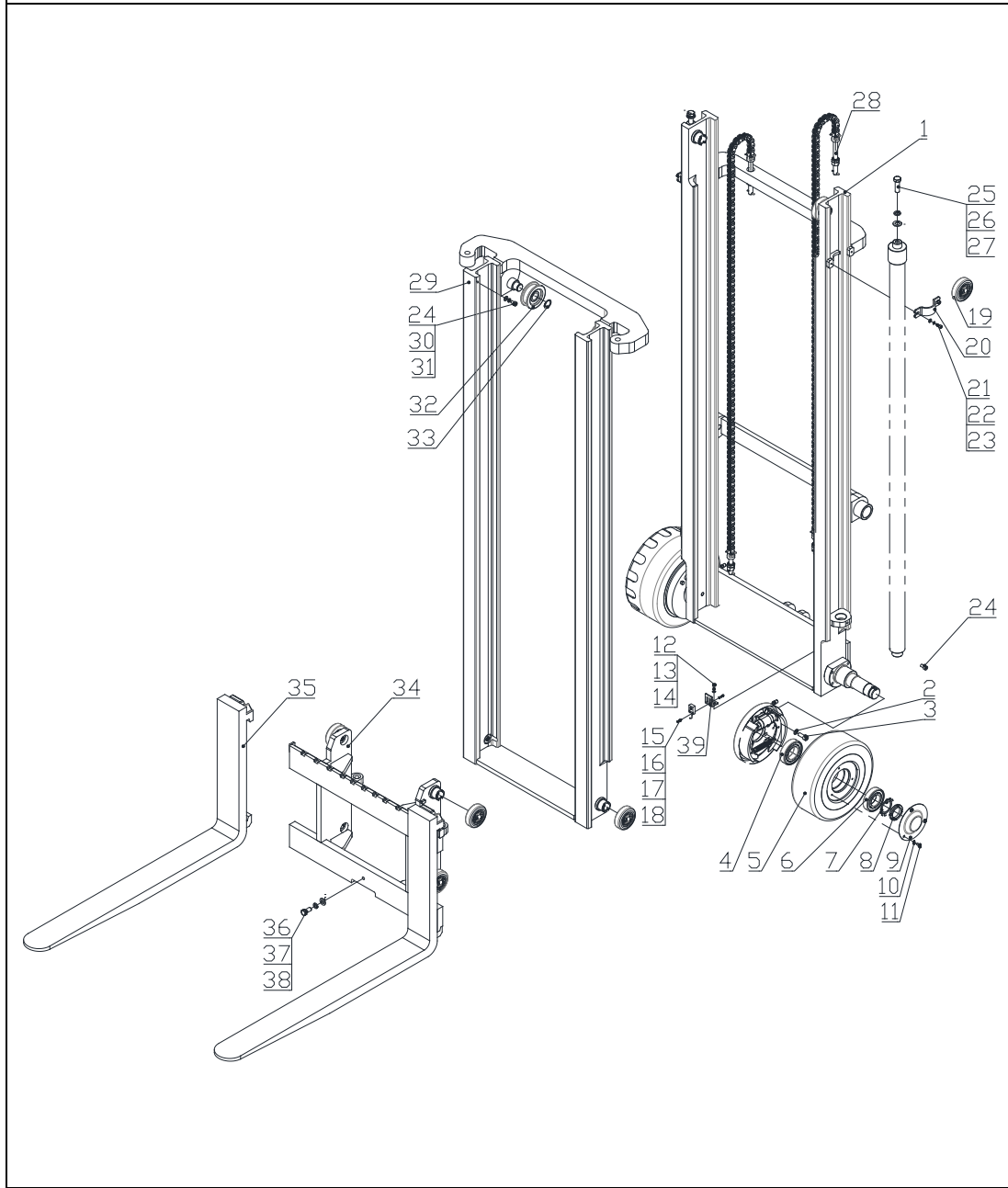
TKA10				
NO.	CODE	DESIGNATION	QTY.	REMARKS
30	GB93 12	Spring washer	1	
31	GB5783 M12×25	Hex head bolt	1	
32	1.0T-920×100×32A	Hook type A fork	2	

Fig.8 Lifting system of TKA15



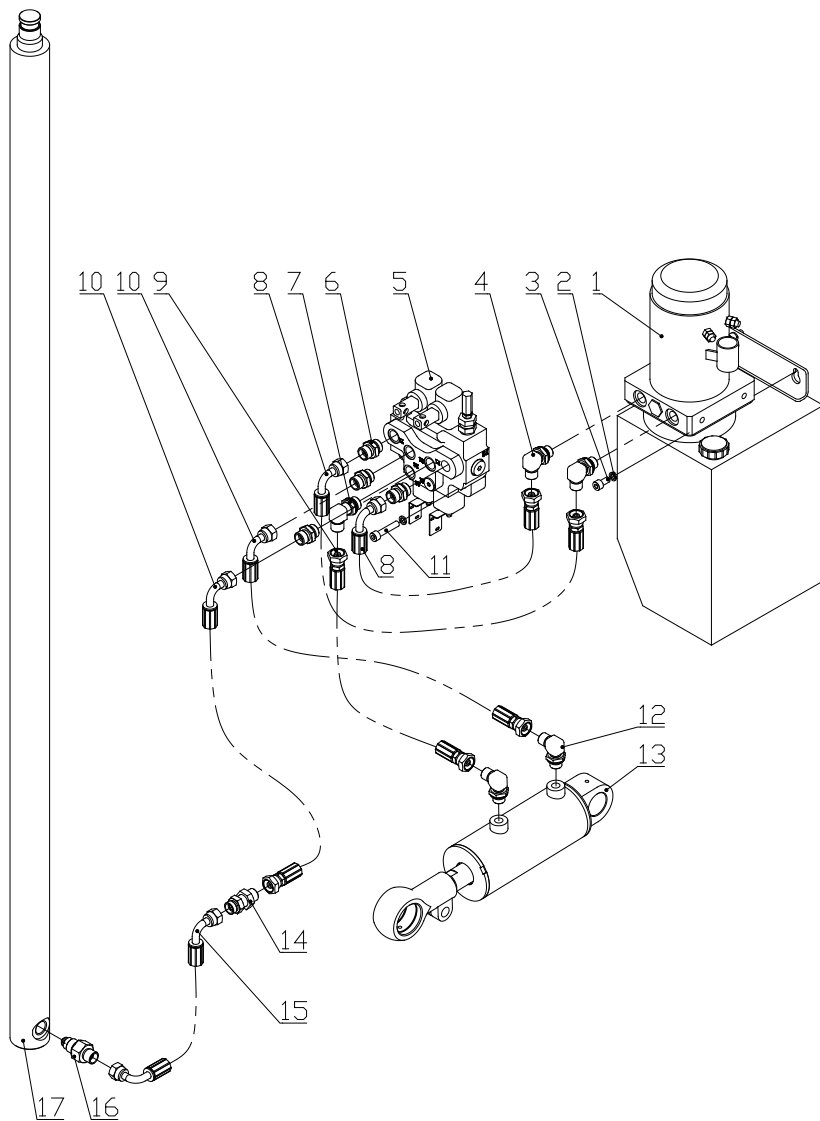
TKA15				
NO.	CODE	DESIGNATION	QTY.	REMARKS
1	TKA15.2.1F09	External mast welding	1	
2	GB93 10	Spring washer	6	
3	GB70.1 M10×25	Hexagon socket head cap screw	8	
4	GB276 6209-2Z	Deep groove ball bearings	2	
5	BCL285×100B	Bearing wheel	2	
6	GB276 6208-2Z	Deep groove ball bearings	2	
7	GB858 39	Round nut with stop washer	2	
8	GB810 M39×1.5	Small round nut	2	
9	TF15.1.14.2	Front wheel cover	2	
10	GB93 6	Spring washer	6	
11	GB818 M6×10	Cross recessed pan head screws	6	
12	GB70.1 M5×8	Hexagon socket head cap screw	2	
13	GB93 5	Spring washer	2	
14	GB97.1 5	Flat washers	2	
15	GB70.1 M3×16	Hexagon socket head cap screw	4	
16	GB93 3	Spring washer	4	
17	GB97.1 3	Flat washers	4	
18	GB6170 M3	Type 1 hexagon nut	4	
19	NL078.3.00R1-00.1	Composite roller body	8	
20	MB15.2.4	Cylinder clamp	2	
21	GB70.1 M6×16	Hexagon socket head cap screw	4	
22	GB97.1 6	Flat washers	4	
23	GB93 6	Spring washer	4	
24	GB70.1 M8×16	Hexagon socket head cap screw	2	
25	GB5786 M14×1.5×50	Hex head bolt	2	
26	GB93 14	Spring washer	2	
27	GB97.1 14	Flat washers	2	
28	LH1223-93	Lifting chain set	2	
29	TKA15.2.2	Inner mast welding	1	

Fig.8 Lifting system of TKA15



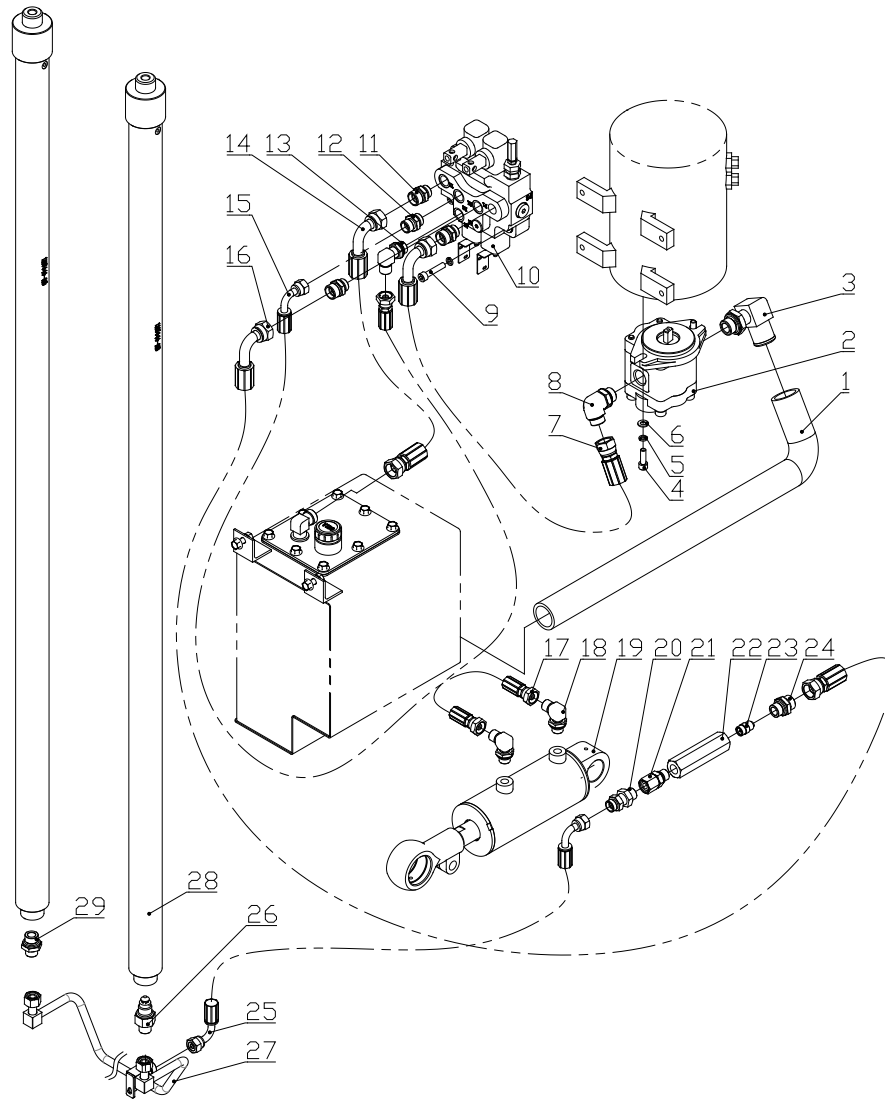
TKA15				
NO.	CODE	DESIGNATION	QTY.	REMARKS
30	GB97.1 8	Flat washers	2	
31	GB93 8	Spring washer	2	
32	780305K2-00	Sprockets	2	
33	GB894.1 25	Shaft elastic ring	2	
34	TKA15.2.4	Fork carrier welding	1	
35	1.8T-920×100×35A	Hook type A fork	2	
36	GB5783 M12×25	Hex head bolt	1	
37	GB93 12	Spring washer	1	
38	GB97.1 12	Flat washers	1	
39	1KA210L-B2000	Proximity switch bracket	1	

Fig.9 Hydraulic system of TKA10



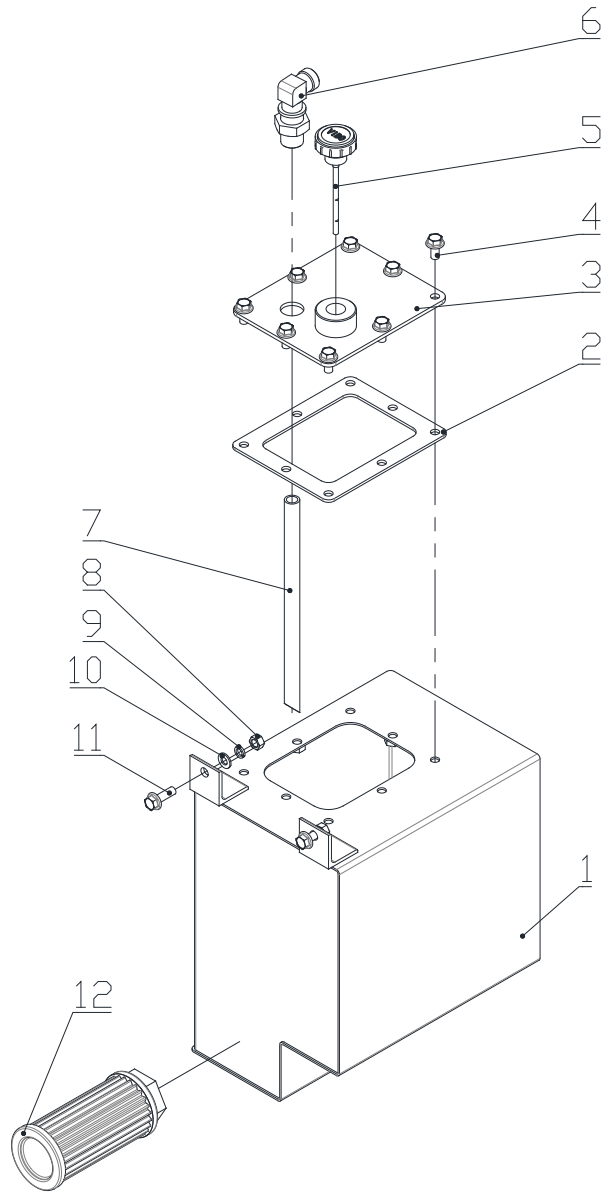
TKA10				
NO.	CODE	DESIGNATION	QTY.	REMARKS
1	BBZ24V2.0-L9W	Pump station assembly	1	
2	GB93 8	Spring washer	5	
3	GB70.1 M8×16	Hexagon socket head cap screw	2	
4	S1CG9-18-060GDQ	Right angle connector	2	
5	7060	Multiple manual valve	1	
6	S1C0-18-08	Straight pipe fittings	4	
7	S1C09-18-080G	Right angle connector	1	
8	YGLES-10125J	Hydraulic hose assembly	2	
9	YGLES-10060J	Hydraulic hose assembly	1	
10	YGLES-10070J	Hydraulic hose assembly	2	
11	GB70.1 M8×40	Hexagon socket head cap screw	3	
12	S1CG9-18-040GDQ	Right angle connector	2	
13	QX3075-1KA045	Tilt cylinder assembly	1	
14	S6C-18LN	Straight through the board connector	1	
15	1KA210L-K9101	Hydraulic hose assembly	1	
16	BYT-QDF-3t-00	Shutoff valve assembly	1	
17	LM3545-1KA	Lifting cylinder	1	

Fig.10 Hydraulic system of TKA15



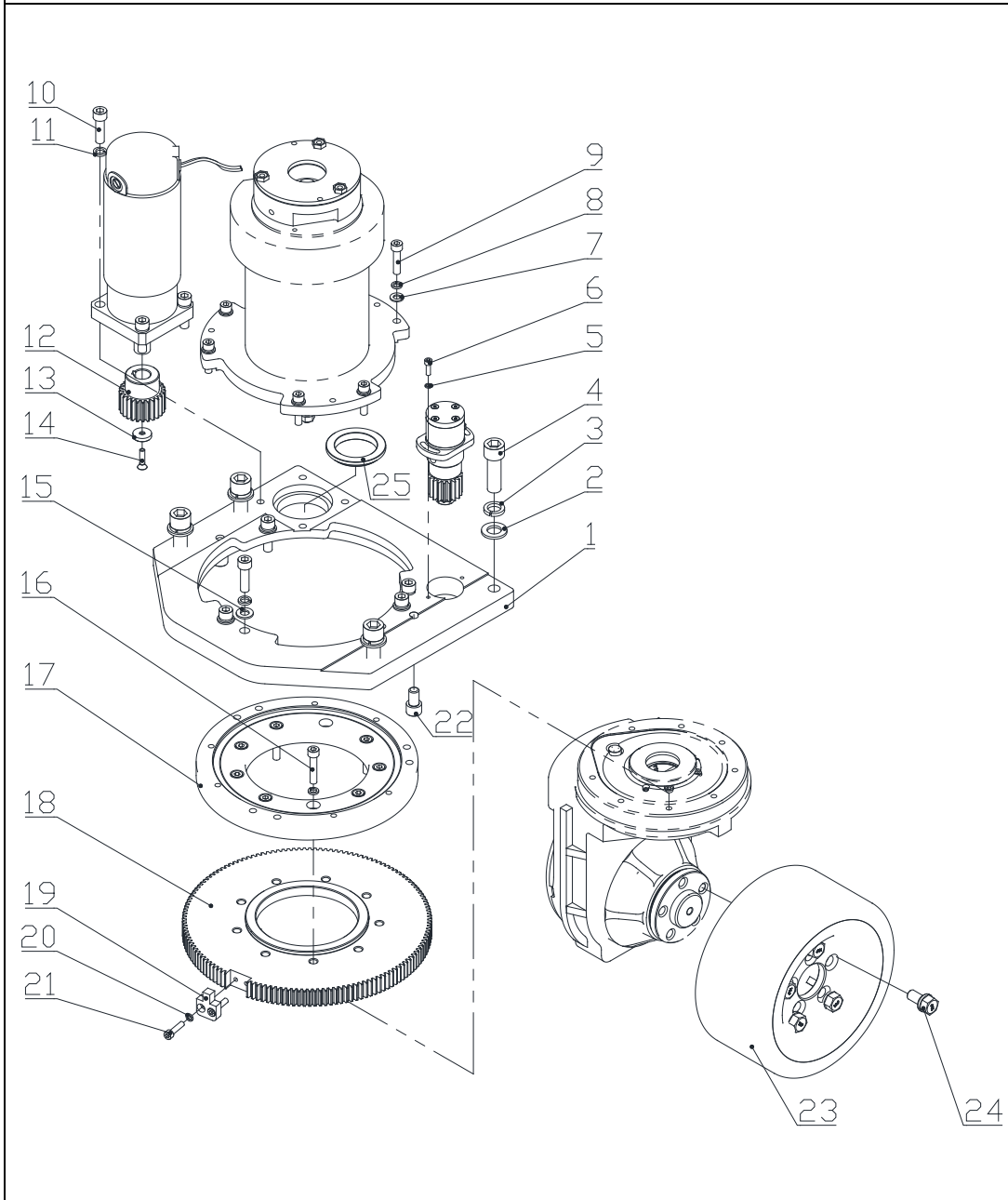
TKA15				
NO.	CODE	DESIGNATION	QTY.	REMARKS
1	TKA15.3.7F09	Suction hose	1	
2	DSG0507F9H9-R202C	Gear pump	1	
3	GJT117L	Right angle connector	1	
4	GB70.1 M8×25	Hexagon socket head cap screw	2	
5	GB93.8	Spring washer	5	
6	GB97.1 8	Flat washers	8	
7	YGLES-12105J	Hydraulic hose assembly	1	
8	S1CH9-220G	Right angle connector	1	
9	GB70.1 M8×40	Hexagon socket head cap screw	3	
10	7060	Multiple manual valve	1	
11	S1C0-22-08	Straight pipe fittings	3	
12	S1C0-18-08	Straight pipe fittings	1	
13	S1C09-18-080G	Right angle connector	1	
14	YGLED-12030J	Hydraulic hose assembly	1	
15	YGLES-10080J	Hydraulic hose assembly	1	
16	YGLES-12080J	Hydraulic hose assembly	1	
17	YGIES-10070J	Hydraulic hose assembly	1	
18	S1CG9-18-040GDQ	Right angle connector	2	
19	QX3075-TKA065	Tilt cylinder assembly	1	
20	S6C-18LN	Straight through the board connector	1	
21	S2GC-06-18WDQ	Straight pipe fittings	1	
22	TKA15.3.6	Transitional tube	1	
23	VSC0635002	Throttling valve	1	
24	S1CH-22-20	Straight connector	1	
25	YGZES-10035J	Hydraulic hose assembly	1	
26	BYT-QDF-3t-00	Shutoff valve assembly	1	
27	TKA15.3.10F09	Lift cylinder connecting pipe assembly	1	
28	LM3040-MB	Lifting cylinder	2	
29	S1CH-18-20	Straight connector	1	

Fig.11 Oil tank assembly of TKA15



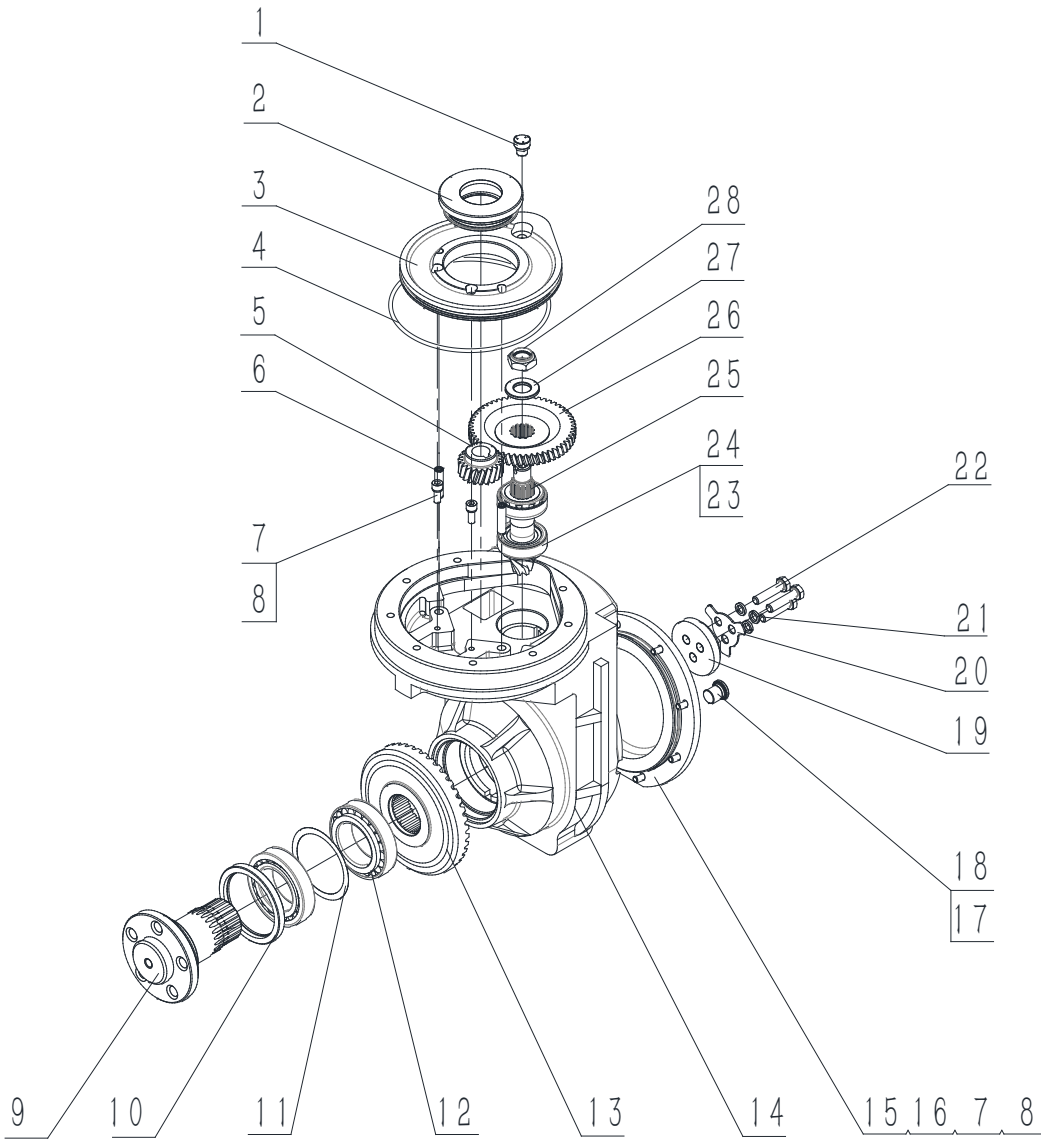
TKA15				
NO.	CODE	DESIGNATION	QTY.	REMARKS
1	TKA15.3.1.1F09	Oil tank welding	1	
2	TK420.3.2.3	Rubber mat	1	
3	TKA15.3.3F09	Oil tank welding	1	
4	GB5789 M8×16	Hexagon flange bolt	8	
5	FC04	Fuel tank cap assembly	1	
6	S6C9-22LN	Right angle connector	1	
7	TKA15.3.5F09	Return pipe	1	
8	GB6170 M8	Type 1 hexagon nut	2	
9	GB93 8	Spring washer	2	
10	GB97.1 8	Flat washers	2	
11	GB5789 M8×25	Hexagon flange bolt	2	
12	WU-100×80-J	Suction filter	1	

Fig.12 Drive assembly of TKA10



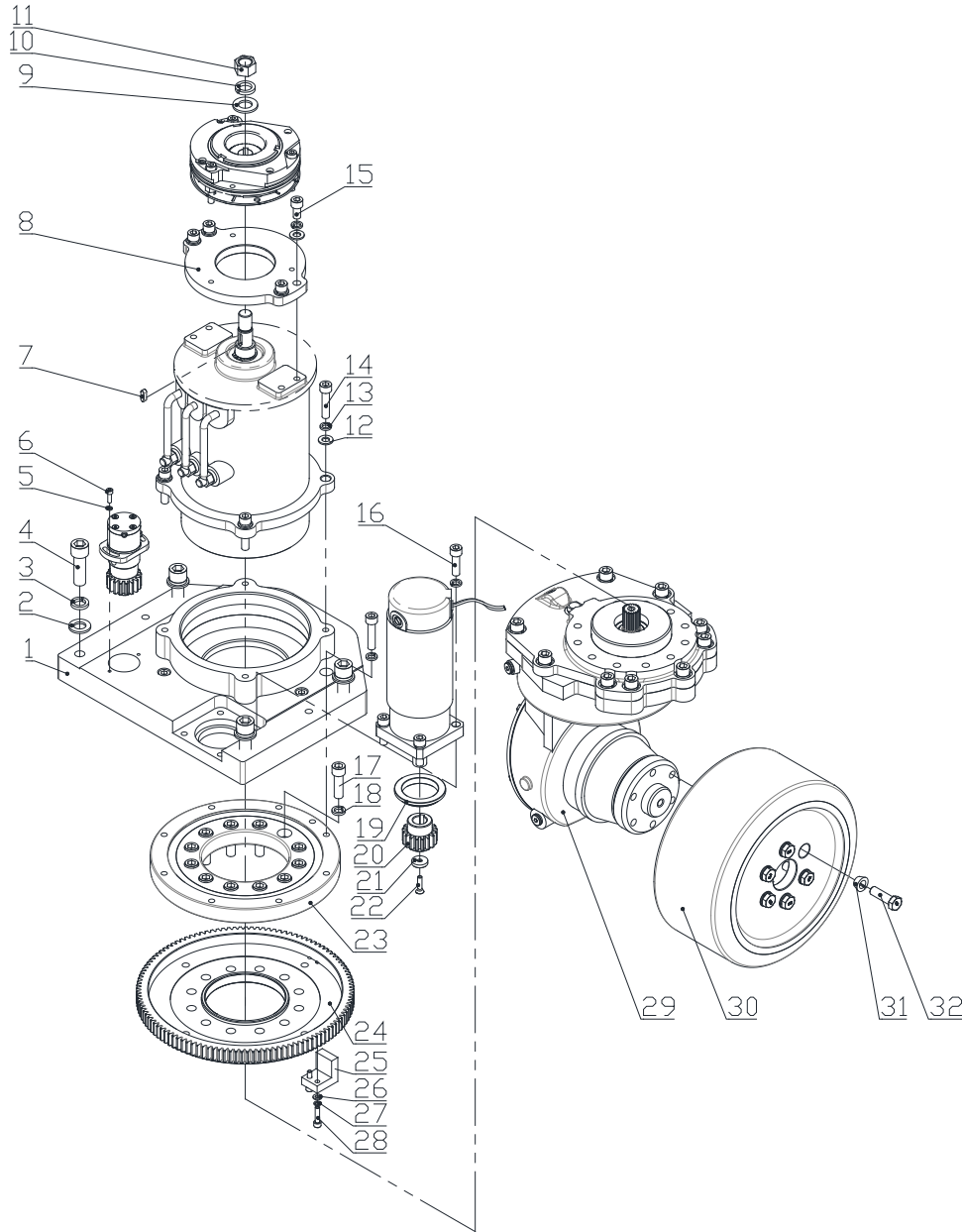
TKA10				
NO.	CODE	DESIGNATION	QTY.	REMARKS
1	1KA210L-M0001	Drive connection plate	1	
2	GB97.1 16	Flat washers	4	
3	GB93 16	Spring washer	4	
4	GB70.1 M16×50	Hexagon socket head cap screw	4	
5	GB93 5	Spring washer	2	
6	GB70.1 M5×16	Hexagon socket head cap screw	2	
7	GB97.1 8	Flat washers	6	
8	GB93 8	Spring washer	14	
9	GB70.1 M8×35	Hexagon socket head cap screw	6	
10	GB70.1 M10×35	Hexagon socket head cap screw	9	
11	GB93 10	Spring washer	9	
12	THA10B.5.4	Steering pinion	1	
13	BDZ1.4.4	Shaft end retainer	1	
14	GB819.1 M6×25	Cross recessed countersunk head screws	1	
15	GB97.1 10	Flat washers	5	
16	GB70.1 M8×40	Hexagon socket head cap screw	8	
17	BYT-002	Rotary support	1	
18	BQD1503.1	Steering gear ring	1	
19	BQD1503.2	Limiting block	1	
20	GB93 6	Spring washer	2	
21	GB70.1 M6×25	Hexagon socket head cap screw	2	
22	GB70.1 M12×20	Hexagon socket head cap screw	2	
23	BQL230×110	Drive wheel	1	
24	BQD1502.4	Drive wheel bolt	5	
25	1KA210L-J0001	Transition ring	1	

Fig.13 Gearbox assembly of TKA10



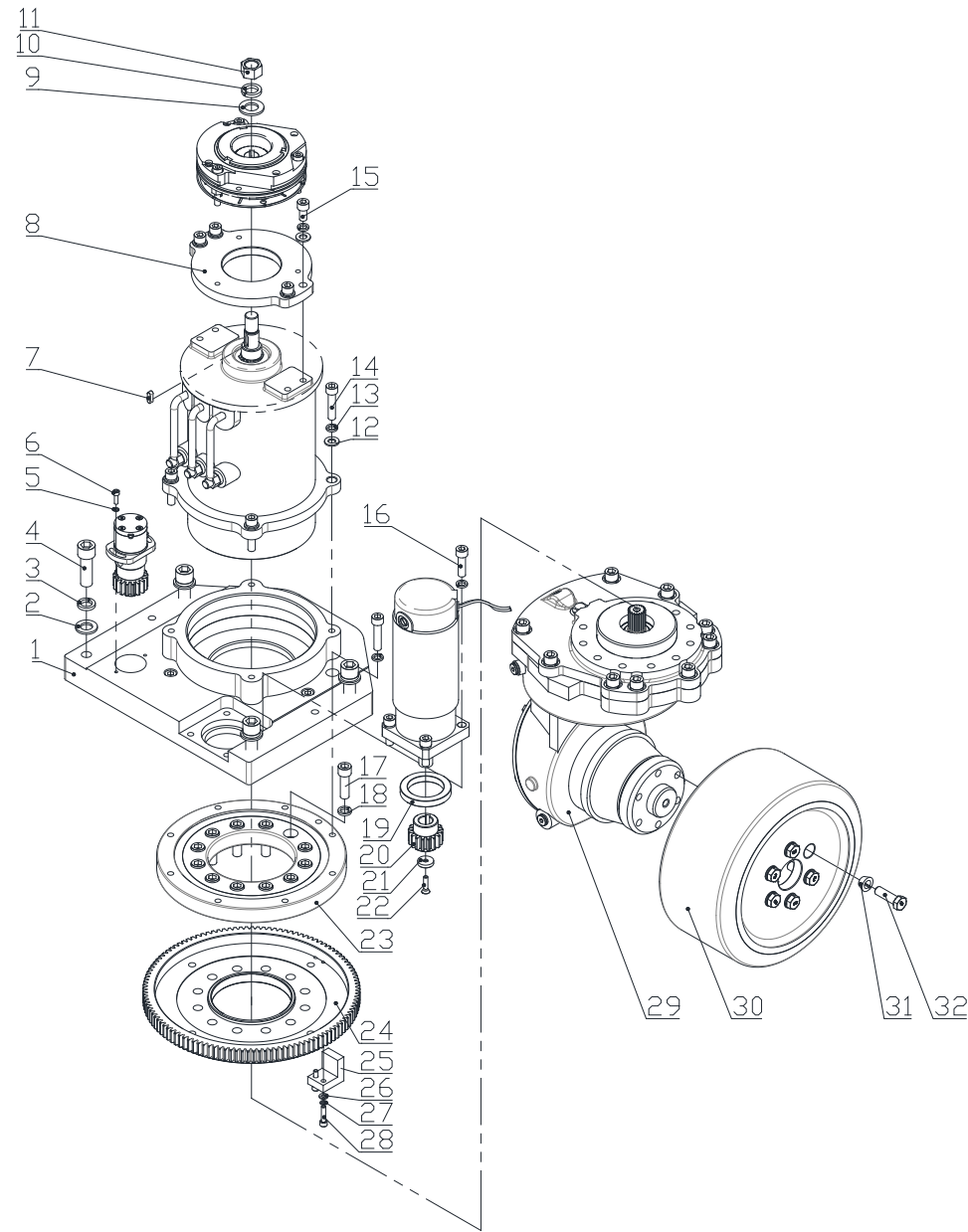
TKA10				
NO.	CODE	DESIGNATION	QTY.	REMARKS
1	BQD1502.1.17	Breather plug assembly	1	
2	BQD1502.1.2	Positioning seat assembly	1	
3	BQD1502.1.3	Land	1	
4	GB3452.1 145×3.55	Hydraulic and pneumatic O-shaped rubber seals	1	
5	BQD1502.1.4	Input gear	1	
6	GB120.1 8×32	Internally threaded pins	2	
7	GB70.1 M6×16	Hexagon socket head cap screw	10	
8	GB93 6	Spring washer	10	
9	BQD1502.1.10	Axle shaft	1	
10	TC484A 658008	Inner package oil seal	1	
11	BQD1502.1.13	Axle shaft adjustment spacer	1	
12	GB297 32009	Tapered Roller Bearings	2	
13	BQD1502.1.9	Passive helical gear	1	
14	BQD1502.1.1	Gear box	1	
15	BQD1502.1.14	Bottom cover	1	
16	GB3452.1 128×3.55	Hydraulic and pneumatic O-shaped rubber seals	1	
17	BQD1502.1.15.1	Screw plug	2	
18	BQD1502.1.15.2	Copper mat	2	
19	BQD1502.1.11	Axle shaft ring	1	
20	BQD1502.1.12	Axle shaft stop washer	1	
21	GB93 8	Spring washer	3	
22	GB5782 M8×35	Hex head bolt	3	
23	LM72489-LM72810	Tapered Roller Bearings	2	
24	BQD1502.1.8	Bevel shaft adjustment spacer	1	
25	BQD1502.1.7	Helical bevel gear shaft	1	
26	BQD1502.1.5	Passive gear	1	
27	BQD1502.1.6	Passive gear washer	1	
28	BQD1502.1.16	fasten the screw nut	1	

Fig.14 Drive assembly of TKA15



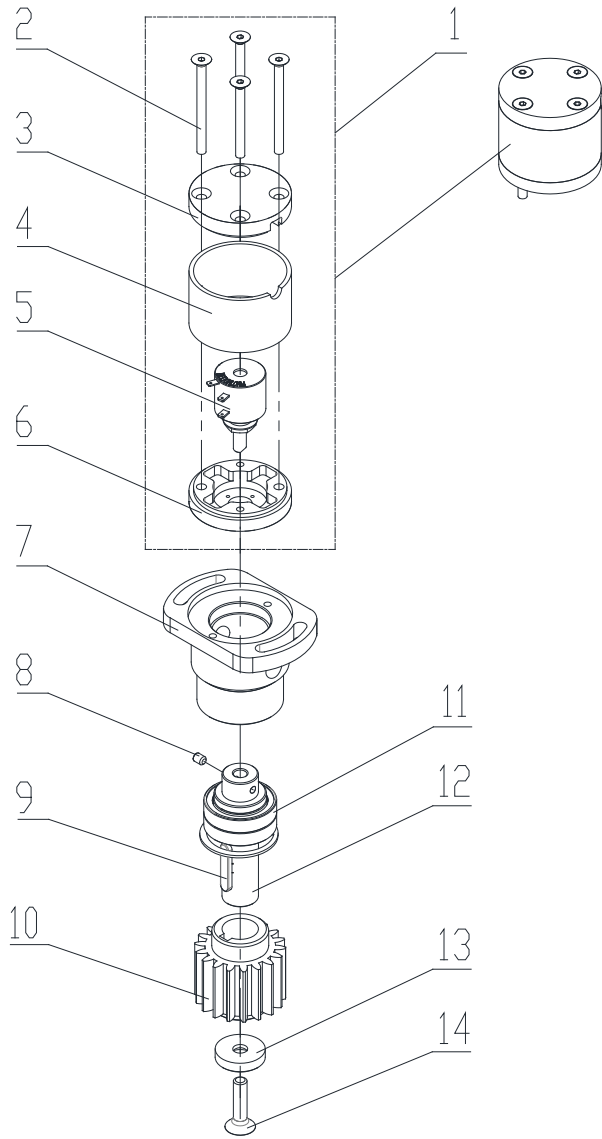
TKA15				
NO.	CODE	DESIGNATION	QTY.	REMARKS
1	TKA15.4.1F09	Drive connection plate welding	1	
2	GB97.1 16	Flat washers	4	
3	GB93 16	Spring washer	4	
4	GB70.1 M16×50	Hexagon socket head cap screw	4	
5	GB93 5	Spring washer	2	
6	GB70.1 M5×16	Hexagon socket head cap screw	2	
7	GB1096 6×6×18A	Common flat keys	1	
8	TKA15.4.11F09	Brake fixing plate	1	
9	GB97.1 18	Flat washers	1	
10	GB93 18	Spring washer	1	
11	GB6171 M18×1.5	Type 1 hexagon nut	1	
12	GB97.1 10	Flat washers	8	
13	GB93 10	Spring washer	18	
14	GB70.1 M10×45	Hexagon socket head cap screw	10	
15	GB70.1 M10×20	Hexagon socket head cap screw	4	
16	GB70.1 M10×35	Hexagon socket head cap screw	4	
17	GB70.1 M12×40	Hexagon socket head cap screw	12	
18	GB93 12	Spring washer	12	
19	1KA210L-J0001	Transition ring	1	
20	TKA15.4.9F09	Steering gear	1	
21	BDZ1.4.4	Shaft end retainer	1	
22	GB819.1 M6×25	Cross recessed countersunk head screws	1	
23	BYT-006-00	Slewing ring	1	
24	MF15D.4.1.3	Steering gear ring	1	
25	TKA15.4.10F09	Limiting block	1	
26	GB97.1 6	Flat washers	2	
27	GB93 6	Spring washer	2	
28	GB70.1 M6×25	Hexagon socket head cap screw	2	
29	BQD28001.1	Gearbox assembly	1	

Fig.14 Drive assembly of TKA15



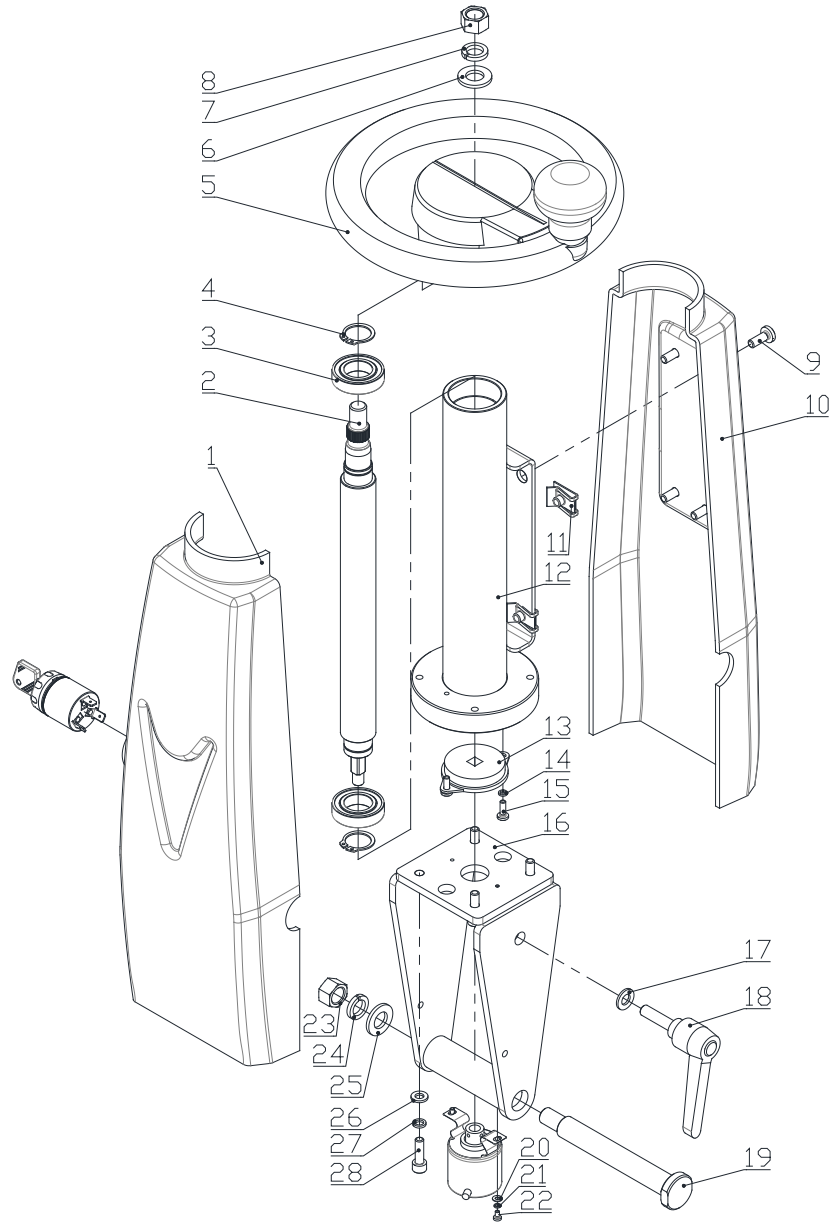
TKA15				
NO.	CODE	DESIGNATION	QTY.	REMARKS
30	BQL280×135	Drive wheel	1	
31	BQD5502.3	Wheel hub swelling pad	6	
32	BQD5502.2	Wheel hub bolt	6	

Fig.15 Steering feedback component



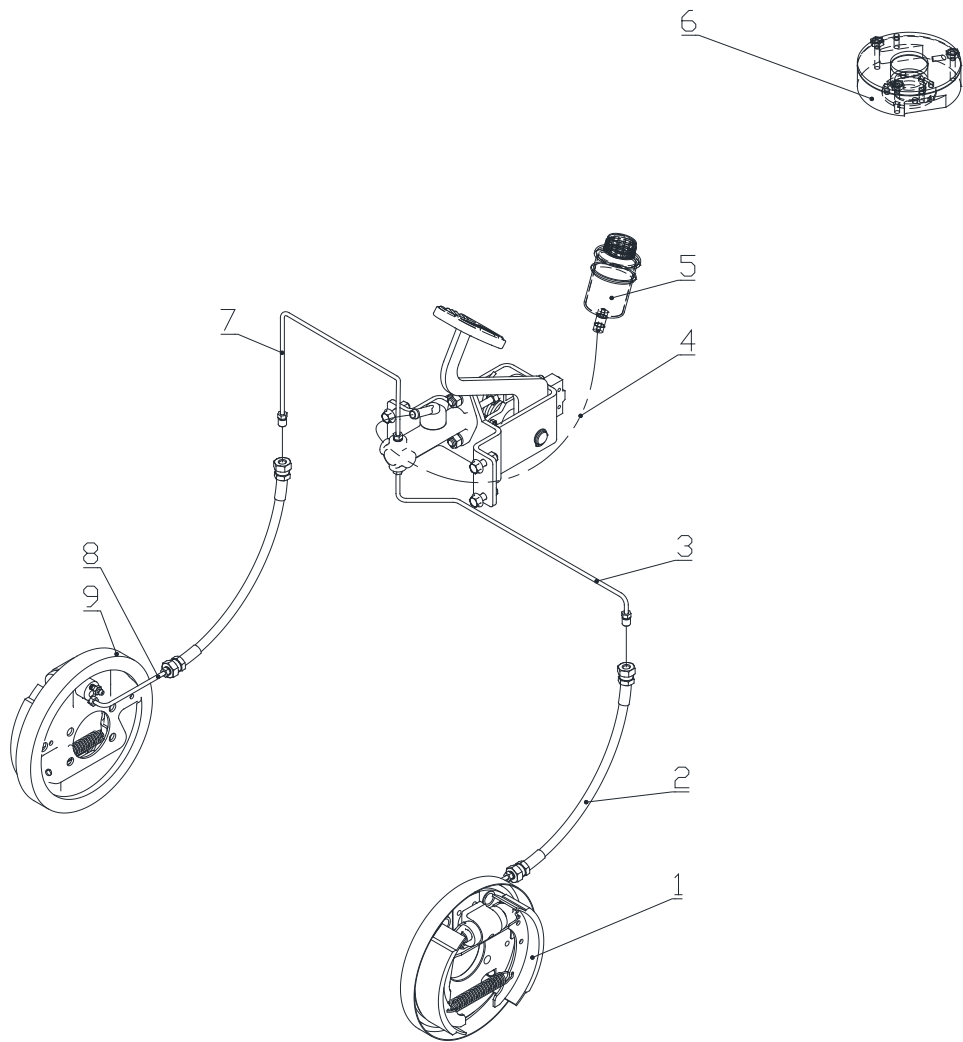
TKA				
NO.	CODE	DESIGNATION	QTY.	REMARKS
1	DZX24110.4.4	Potentiometer assembly	1	
2	GB70.3 M4×50	Hexagon countersunk head screws	4	
3	DZX24110.4.4.3	Upper cover plate	1	
4	DZX24110.4.4.2	Casing	1	
5	S22HP-6	Multi-turn potentiometer	1	
6	DZX24110.4.4.1	Lower mounting plate	1	
7	DZX24110.4.3	Potentiometer lower housing	1	
8	GB77 M4×5	Hexagon flat end set screws	1	
9	GB1096 5×5×25A	Common flat keys	1	
10	DZX24220.4.1	Steering pinion	1	
11	GB276 61804-2Z	Deep groove ball bearings	1	
12	DZX24220.4.2	Connecting shaft	1	
13	BDZ1.4.4	Shaft end retainer	1	
14	GB70.3 M6×25	Hexagon countersunk head screws	1	

Fig.16 Steering wheel assembly



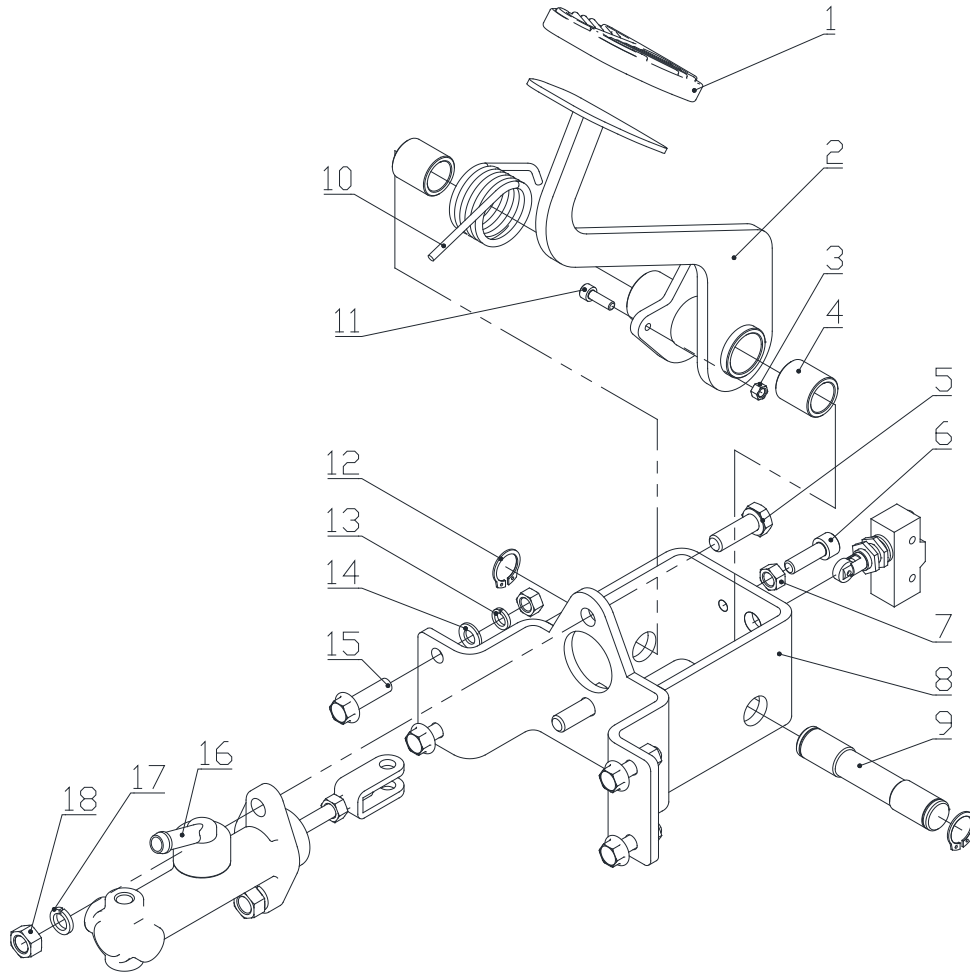
TKA				
NO.	CODE	DESIGNATION	QTY.	REMARKS
1	1KA210L-H2001	Steering column front shell	1	
2	1KA210L-J1001	Steering shaft	1	
3	GB276 61904-2Z	Deep groove ball bearings	2	
4	GB894.1 20	Shaft elastic ring	2	
5	T550029480	Steering wheel	1	
6	GB97.1 12	Flat washers	1	
7	GB93 12	Spring washer	1	
8	GB6170 M12	Type 1 hexagon nut	1	
9	GB818 M6×16	Cross recessed pan head screws	4	
10	1KA210L-H2001	Steering column front shell	1	
11	LP-133 M6	M6 reed nut	4	
12	1KA210L-J1100	Steering column welding	1	
13	FDT-47A-103	Damper	1	
14	GB93 4	Spring washer	2	
15	GB818 M4×12	Cross recessed pan head screws	2	
16	1KA210L-J1200	Adjust base welding	1	
17	GB97.1 8	Flat washers	1	
18	490934	Heavy duty adjustment handle	1	
19	GB70.1 M6×20	Hexagon socket head cap screw	1	
20	GB97.1 3	Flat washers	2	
21	GB93 3	Spring washer	2	
22	GB818 M3×5	Cross recessed pan head screws	2	
23	GB889.1 M16	Type 1 non-metallic insert hexagon lock nut	1	
24	GB93 16	Spring washer	1	
25	GB97.1 16	Flat washers	1	
26	GB97.1 6	Flat washers	4	
27	GB93 6	Spring washer	4	
28	GB70.1 M6×20	Hexagon socket head cap screw	4	

Fig.17 Braking assembly



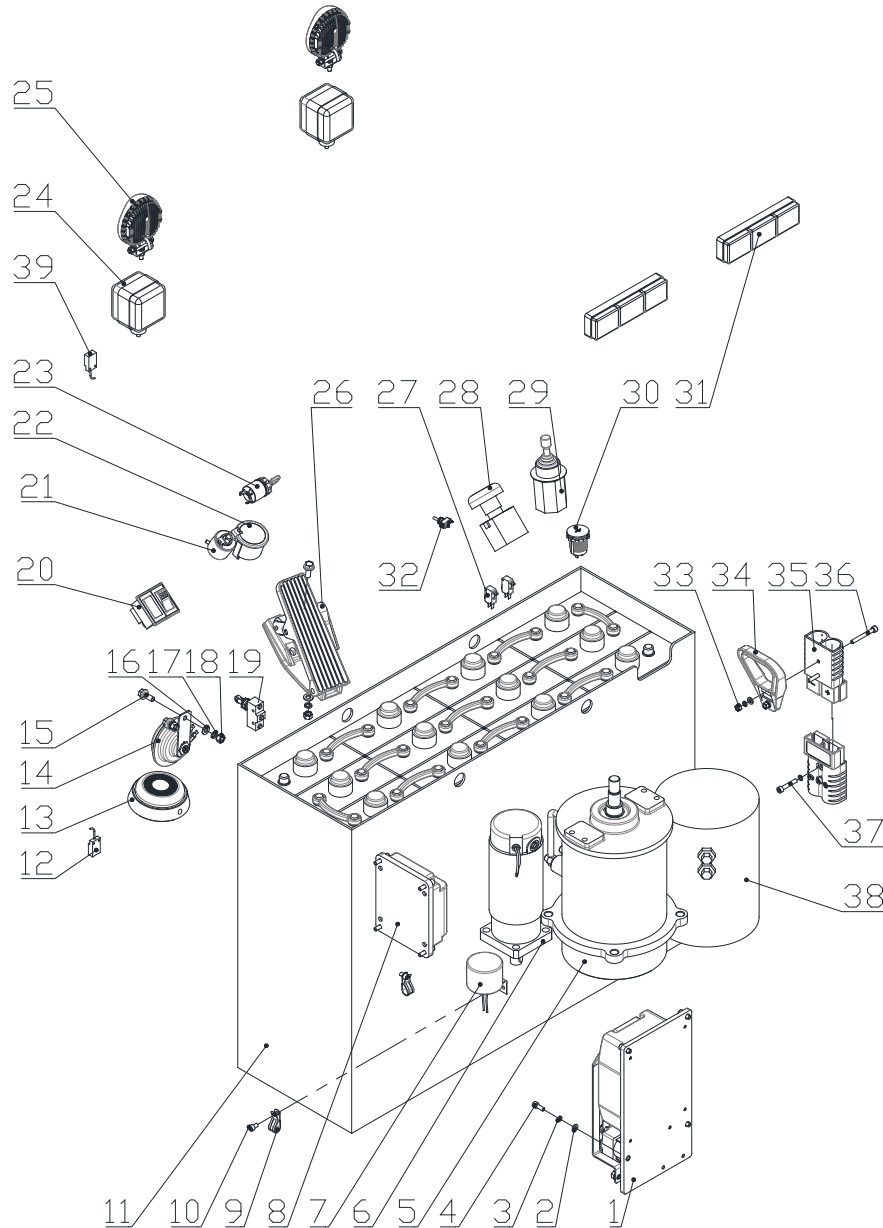
TKA				
NO.	CODE	DESIGNATION	QTY.	REMARKS
1	JH150-030100-BYT	Left brake assembly	1	
2	TKA15.6.11	Left brake hose	2	
3	1KA210L-L4000	Left brake steel pipe	1	
4	XJG12S-075	Rubber tube	1	
5	TK1530.6.4	Brake cup	1	
6	REB0910(20)PF	Electromagnetic brake	1	TKA10
	REB0512ZF-R	Electromagnetic brake	1	TKA15
7	1KA210L-L5000	Right brake steel pipe	1	
8	1KA210L-L2000	Wheel brake steel pipe	2	
9	JH150-030200-BYT	Right brake assembly	1	

Fig.18 Foot brake assembly



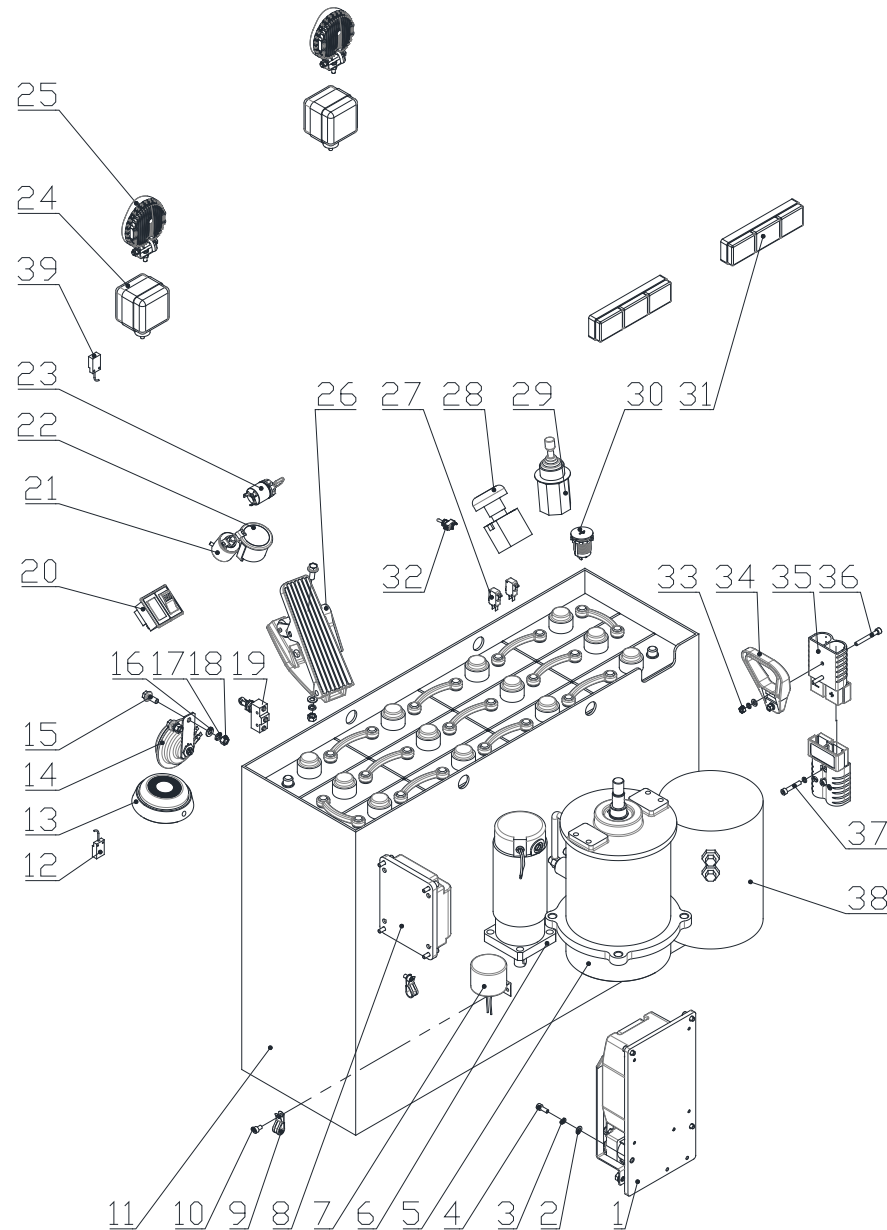
		TKA			
NO.	CODE	DESIGNATION	QTY.	REMARKS	
1	239A5-42301	Pedal pad	1		
2	1KA210L-L1200	Brake pedal welding	1		
3	GB6170 M5	Type 1 hexagon nut	1		
4	HZ182425	Sliding bearing	2		
5	GB5783 M10×30	Hex head bolt	2		
6	GB70.1 M8×25	Hexagon socket head cap screw	2		
7	GB6170 M8	Type 1 hexagon nut	5		
8	1KA210L-L1100	Foot brake bracket welding	1		
9	1KA210L-L1001	Brake shaft	1		
10	TK420.6.1.5	Brake torsion spring	1		
11	GB70.1 M5×16	Hexagon socket head cap screw	1		
12	GB894.1 18	Shaft elastic ring	2		
13	GB93 8	Spring washer	4		
14	GB97.1 8	Flat washers	4		
15	GB5789 M8×30	Hexagon head flange bolt	4		
16	ZDZB1-3T-MK20	Brake master cylinder	1		
17	GB93 10	Spring washer	2		
18	GB6170 M10	Type 1 hexagon nut	2		

Fig.19 Electrical system



		TKA		
NO.	CODE	DESIGNATION	QTY.	REMARKS
1	1232E-2121-1KA210E	Electric control assembly	1	TKA10
	1232E-2321-TKA15F09	Electric control assembly	1	TKA15
2	GB97.1 6	Flat washers	6	
3	GB93 6	Spring washer	8	
4	GB70.1 M6×16	Hexagon socket head cap screw	4	
5	XQJ1.5-BYT7	Drive motor	1	TKA10
	XQJ2.3-BYT10	Drive motor	1	TKA15
6	ZYT24400A-G33.92	Steering unit	1	
7	DJB-24B	Reversing buzzer	1	
8	EPS2403-1KA	Electric steering controller	1	
9	RSC1-12	Line card	2	
10	GB70.1 M6×10	Hexagon socket head cap screw	2	
11	QDC24-300-1	Traction battery pack	1	TKA10
	QDC24-480-1	Traction battery pack	1	TKA15
12	BEFBK-NE08PB-2M	Proximity switch	1	
13	MDFS-8020	Foot switch	1	
14	DL2280-24V	Electric horn	1	
15	GB5783 M8×20	Hex head bolt	4	
16	GB97.1 8	Flat washers	4	
17	GB93 8	Spring washer	4	
18	GB6170 M8	Type 1 hexagon nut	4	
19	Z-15GQ22-B	Micro switch	1	
20	QB-ZD05	Double rocker switch	1	
21	K38-J2N1000B8	Encoder	1	
22	QLB2.847.002	24V power hour meter	1	
23	JK410	Ignition Switch	1	
24	DJ12-24027-D1	LED headlight	2	
25	DJ24310-Z1	24V double sided turn signal	2	
26	HPFP-128005	Accelerator	1	

Fig.19 Electrical system



NO.	CODE	TKA		
		DESIGNATION	QTY.	REMARKS
27	RV-165-1025	Micro switch	2	
28	ZJK125A	Emergency switch	1	
29	TMRM-301110010100000	Cross switch	1	
30	C832833B700	Car USB charger socket	1	
31	DJ24LED-W1	24V tri-color taillights	2	
32	E-TEN1122	Toggle switch	1	
33	GB6170 M6	Type 1 hexagon nut	2	
34	CJQLS-02	Connector handle	1	
35	Z065-350-02	Plug connector	2	
36	GB70.1 M6×50	Hexagon socket head cap screw	2	
37	GB70.1 M6×35	Hexagon socket head cap screw	2	
38	XQD3.5-BYT1	Lifting motor	1	TKA15
39	BEFBK-NE08PA-2M	Proximity switch	1	