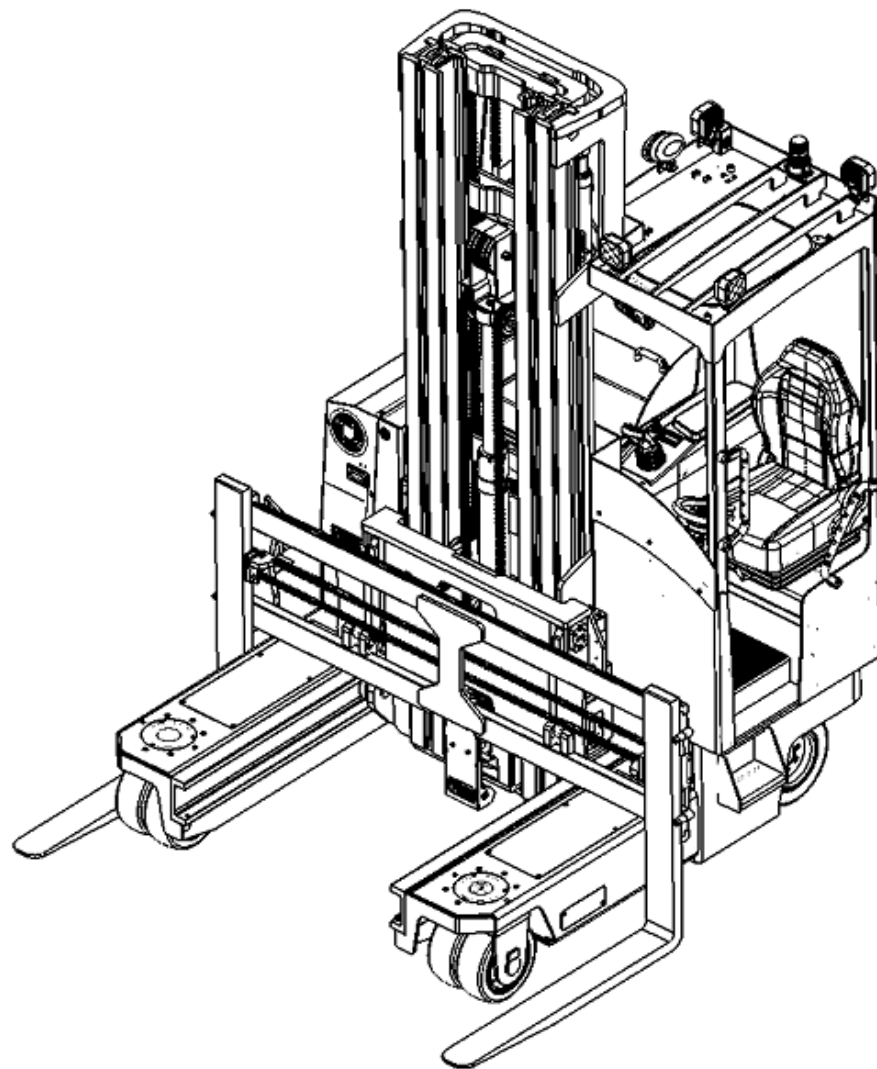


# MiMA®

MATERIAL HANDLING EQUIPMENT  
DESIGNER & MANUFACTURER

## PART LIST

MQC25 MULTI-DIRECTIONAL FORKLIFTTRUCK



BANYITONG SCIENCE&TECHNOLOGY DEVELOPING CO.,LTD.

## INTRODUCTION

1. This "Parts Catalog" includes the main parts of the MQC25 reach truck;
2. When ordering parts, it is necessary to indicate the model of the forklift used, the serial number of the factory, the code, name and order quantity of the required parts;
3. When repairing and replacing parts, in order to ensure the quality, please use the parts of our company;
4. In order to improve product quality, the company will improve some parts and components. The improved parts cannot be revised one by one in this catalog in time. If you want to know more details, please contact this company.

# Catalogue

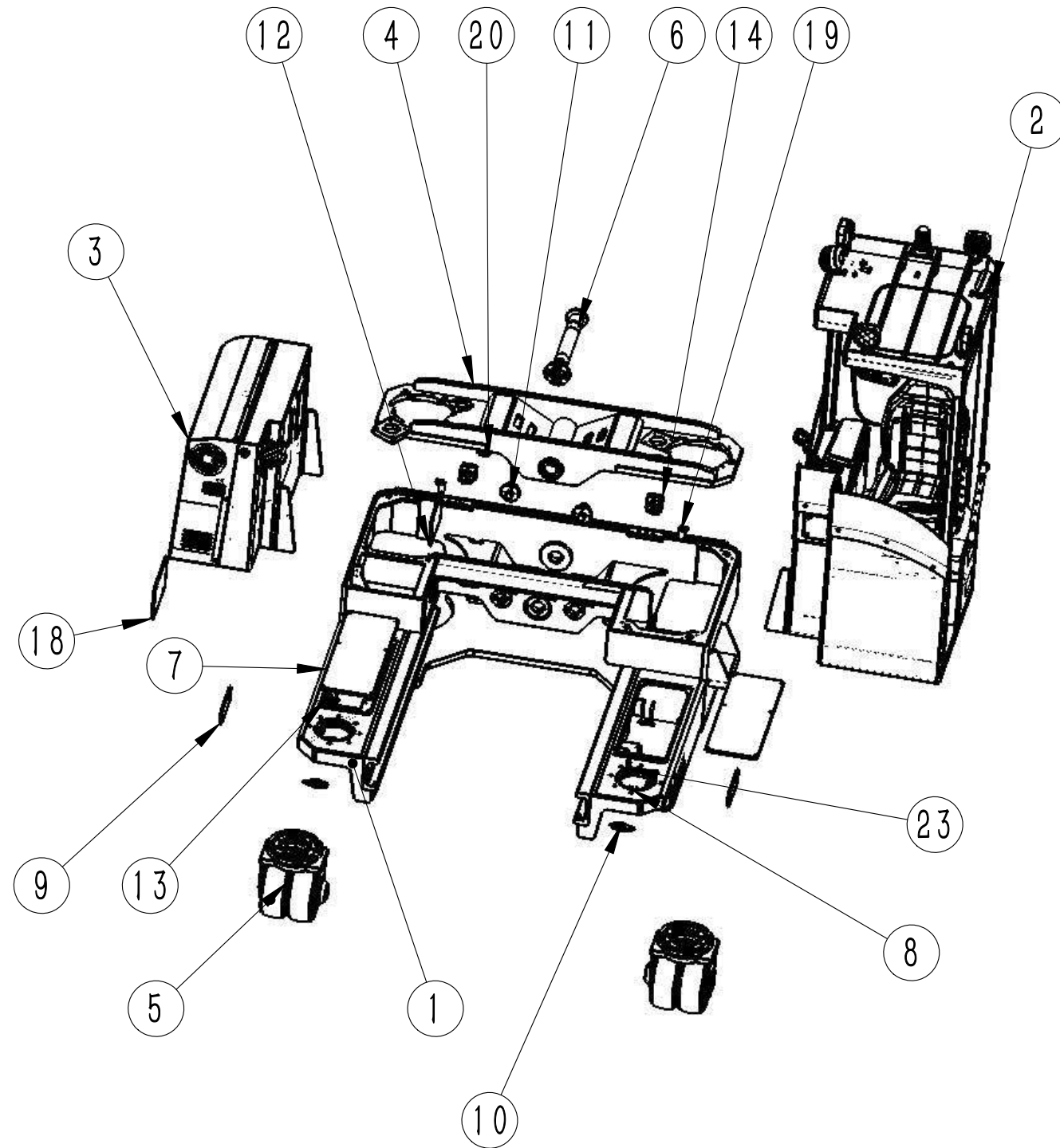
NO.	Code	Name	Models	
<b>Body System</b>				
1-1	MQC25.1	Body System		1-1
1-2	MQC25.1.2	Cab components		1-2
1-3	MQC35.5.2	Steering wheel assembly		1-3
1-4	MQC25.1.3	Right box assembly		1-4
1-5	MQC25.1.4	Swing bridge assembly		1-5
1-6	MQC25.1.5	Load wheel assembly		1-6
1-7	MQC25.1.6	Oscillating shaft assembly		1-7
1-8	MQC25.1.11	Limit slider assembly		1-8
<b>Lifting system</b>				
2-1	MQC25.2SQ	Lifting system assembly		2-1
2-2	MQC25.2.1SQ	Outer Mast Components		2-2
2-3	MQC25.2.2SQ	Middle mast components		2-3
2-4	MQC25.2.3SQ	Inner Mast Components		2-4
2-5	MQC25.2.4SQ	Inner carriage assembly		2-5
2-6	MQC35.2.3.2SQ	Rubber wheel cage assembly		2-6

# Catalogue

No.	Code	Name	Models	Page Number
2-7	MQC25.2.5SQ	Fork Carriage Components		2 - 7
Hydraulic system				
3-1	MQC25.3	Hydraulicsystem		3 - 1
3-2	MQC25.3.1	hydraulictankassembly		3 - 2
3-3	MQC25.3.2MQC25.	Oilpumpmotorassembly components		3 - 3
3-4	3.3	Liftsolenoidvalveassembly		3 - 4
Drive System				
4-1	MQC25.4	Drive System		4 - 1
Steering system				
5-15-2	MQC25.5.1	Frontsteeringseatassembly		5 - 1
	MQC25.5.2	Rearsteeringencoderassembly		5 - 2
Electrical System				
6-16-2	MQC25.7	ElectricalSystem		6 - 1
	MQC25.7	Battery pack		6 - 2

Fig1-1 MQC25 .1 Body System

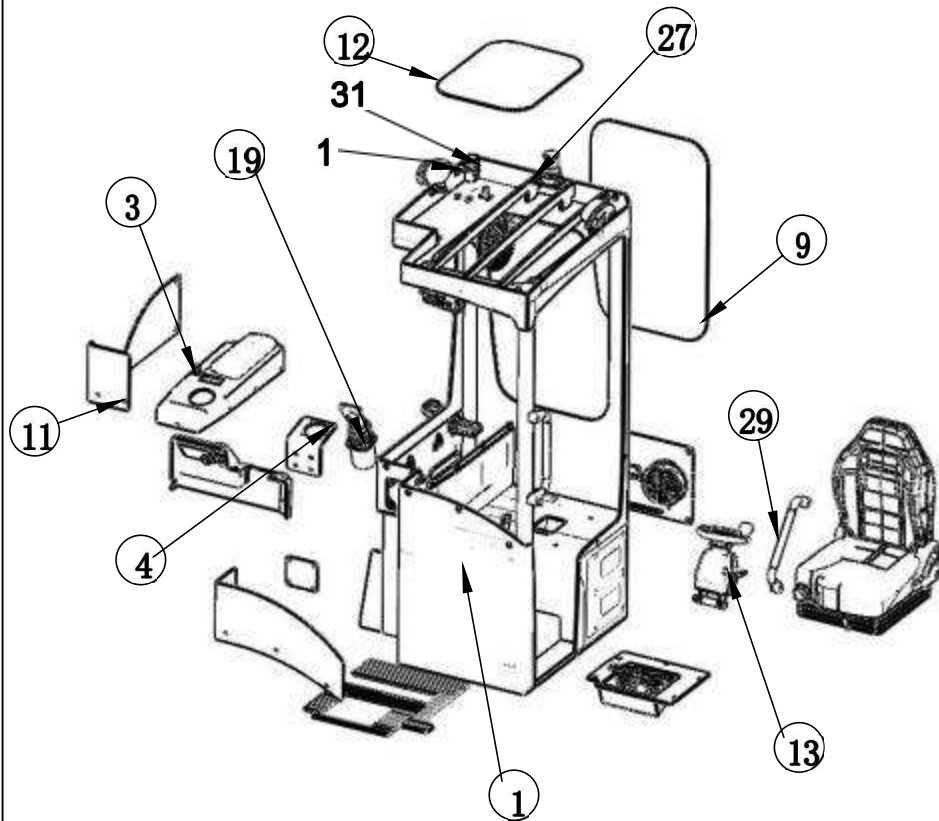
Applicable model series



No.	Code	Name	QTY	Remarks
1	MQC25.1.1	Frame welding	1	
2	MQC25.1.2	Cab components	1	
3	MQC25.1.3	Right box assembly	1	
4	MQC25.1.4	Swing bridge assembly	1	
5	MQC25.1.5	Load wheel assembly	2	
6	MQC25.1.6	Oscillating shaft assembly	1	
7	MQC25.1.7	Outrigger upper sealing plate	2	
8	MQC25.1.8	Welding of the small cover plate of the outrigger	2	
9	MQC25.1.9	Side cover	2	
10	MQC25.1.10	Encoder limit plate	2	
11	MQC25.1.11	Limit slider assembly	2	
12	MQZ25.1.19.1	Large cover for outriggers	1	
13	MQZ25.1.16.4	Potentiometer fixing plate	2	
14	MQB30.1.7F101	Cylinder seat welding	2	
15	GB93 12	Spring washer	4	
16	GB70.1 M12×30	Hex socket head cap screw	4	
17	LP-133 M6	Reed nut	8	
18	TFZ16.2.11	Tackle cover	1	
19	XZ20-055-LW-ZP	Lug plate pin assembly	2	
20	TTPG16-213.5	Duplex pipe clamp	2	
21	GB70.1 M12×40	Hex socket head cap screw	2	
22	GB6170 M12	Type 1 hex nut	2	
23	IME12-04BPSZW2S	Proximity switch	1	
24				

Fig1-2MQC25. 1.2 Cab Components

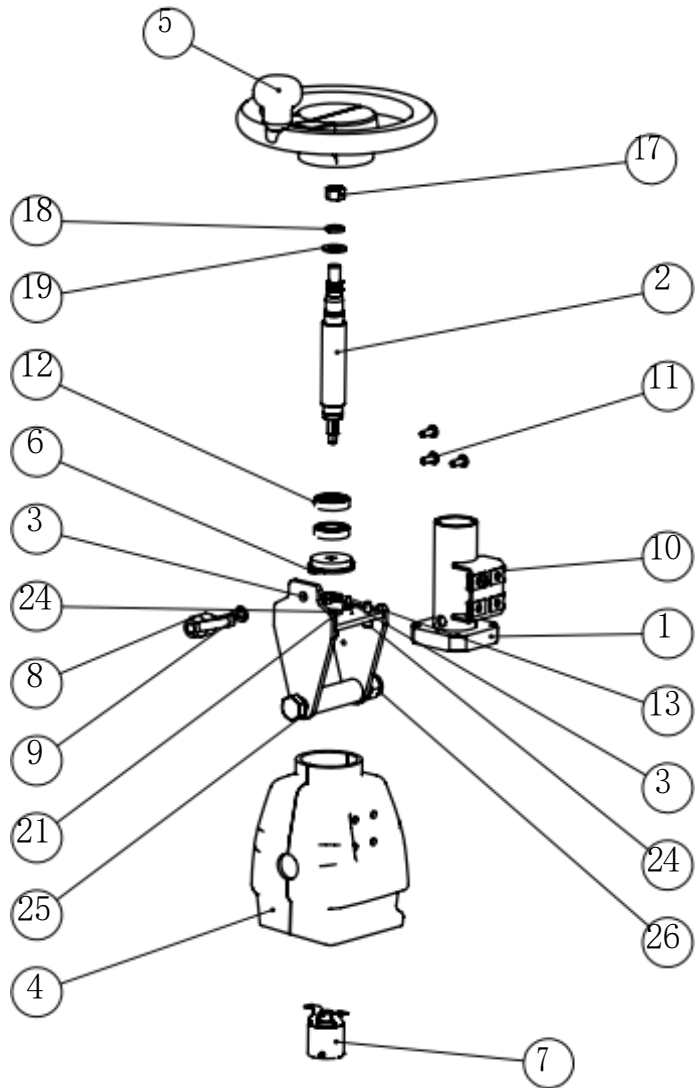
Applicable model series



No.	Code	Name	QTY	Remarks or Models
1	MQC25.1.2.1	Cab Welding	1	
2	MQC25.1.3.2-ZP	pedal assembly	1	
3	MQC25.1.2.3	cover components	1	
4	MQC25.1.2.4	handle mounting plate	1	
5	MQC25.1.2.5	Seal plate	1	
6	MQC25.1.2.6	rear door assembly	1	
7	MQC25.1.2.7	Rubber pad	1	
8	MQC25.1.3.8	Rubber Pad	1	
9	MQC25.1.2.9	rear glass	1	
10	MQC25.1.2.10	front protective glass	1	
11	MQC25.1.2.11	side protective glass	1	
12	MQC25.1.2.12	wind shield	1	
13	MQC35.5.2	steering wheel assembly	1	
14	1232SE-5321-7Q	Electric control assembly	1	
15	1232E-2121-3	Electric control assembly	1	
16	C420	controller	1	
17	MQC35.7.2	contactor assembly	1	
18	1353-4101	Intelligent Distributed IO	1	
19	BV85R	handle	1	
20	DL2280-24V	Electric horn	1	
21	DJB-24B-ZP-A	Reverse buzzer assembly	1	
22	ZB030048024TA-BYT	DC converter	1	
23	17032010-7	7inch 1080P wireless monitor	1	
24	DS08B24VD.C	Light weight Electric Fan	1	
25	BYT-DD-01	headlights	4	
26	LGD-0001	bluelight	2	
27	XRL2010B	LED warning light	1	
28	BF6-3AB-FABRIC	Full-suspension shock-absorbing seat assembly	1	
29	A6S55-10421	Get on the big handle	2	
30	RC6040MC	Rectangular pipe plug	1	
31	HXQ-30 × 35M	Positive guard coil	5	
32	LP-133M6	reednut	10	
33	MQC25.7.2	Steering Controller Assembly	1	
34	ZC65-350A	Connector Assembly	1	
35	GB17880.1M8 × 18	flat head rivet nut	2	
36	GB17880.1M6 × 16.5	flat head rivet nut	4	
37	DB-SM6 × 16	Hexagon socket screw with chamfering	13	
38	NP2-BS542	emergency power off switch	1	

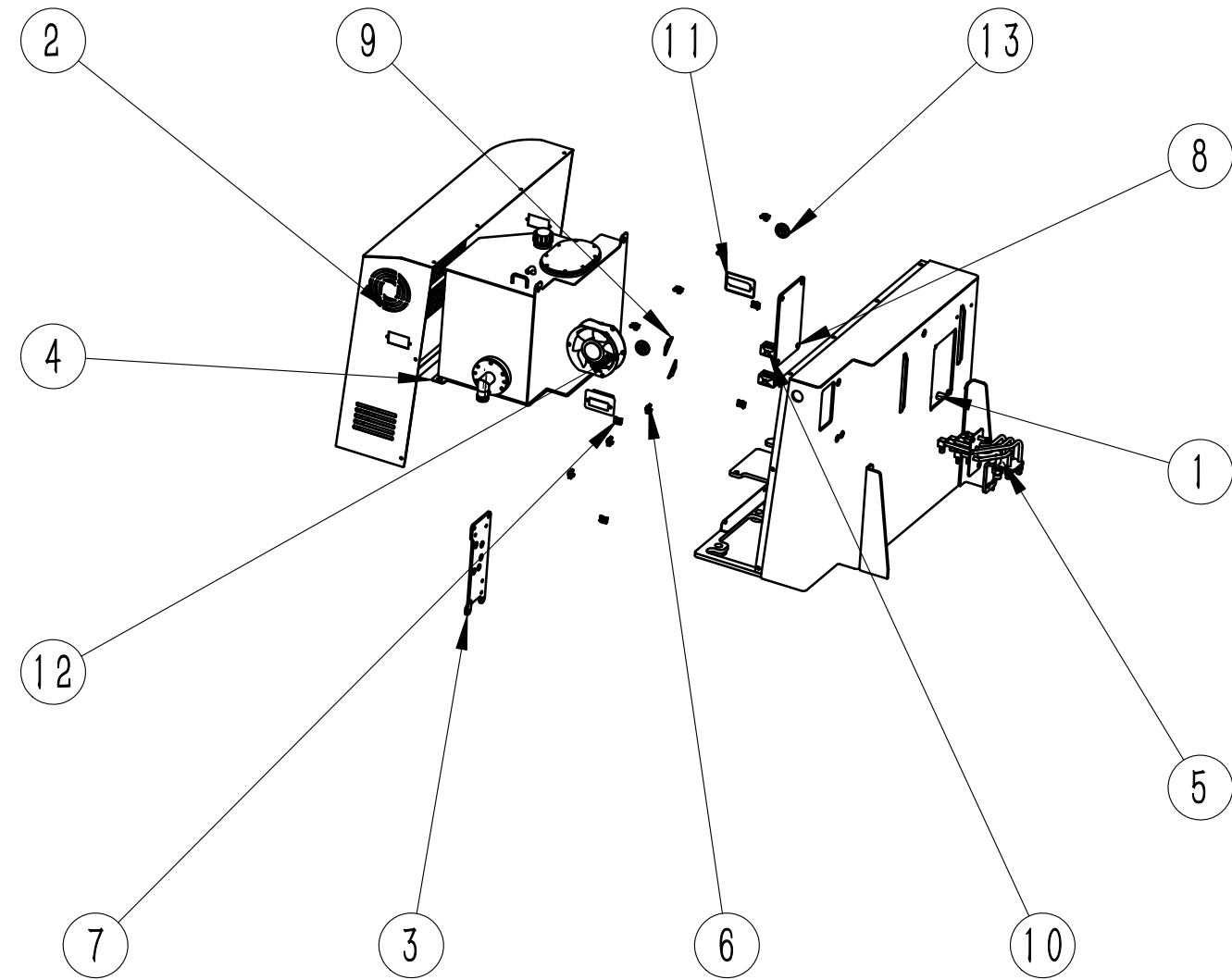
Fig1-3MQC35. 5.2Steering wheel assembly

Applicable model series



No.	code	Name	QTY	Remarks
1	MQC35.5.2.1	Steeringcolumnwelding	1	
2	MQC35.5.2.2	Steeringshaft	1	
3	MQC35.5.2.3	Weldingofadjustmentseat	1	
4	MQC35.5.2.4	Steeringcolumncoverassembly	1	
5	T550029480	steeringwheel	1	
6	YS-1005-48-F-0.2	damper	1	
7	DBS36E-BBAK01000-1	Encoderassembly	1	
8	490934	Heavydutyadjustmenthandle	1	
9	GB97.18	FlatWashers	1	
10	LP-133M6	reednut	4	
11	DB-SM6 × 16	Hexagonsocketscrew	4	
12	GB27661904-2Z	DeepGrooveBallBearings	2	
13	GB894.120	Circlipforshaft	2	
14	GB97.13	FlatWashers	2	
15	GB933	springwasher	2	
16	GB818M3 × 5	Crossrecessedpanhead	2	
17	GB6170M12	Type1hexnut	1	
18	GB9312	springwasher	1	
19	GB97.112	FlatWashers	1	
20	GB934	springwasher	2	
21	GB818M4 × 12	Crossrecessedpanheadscrews	2	
22	GB97.16	FlatWashers	4	
23	GB936	Springwasher	4	
24	GB70.1M6 × 20	Hexsockettheadcapscrew	4	
25	GB5782M16 × 130	Hexheadbolt	1	
26	GB889.1M16	Type1non-metallicinserthex locknuts	1	

Fig. 1-4 MQC25.1.3 Right Box Assembly

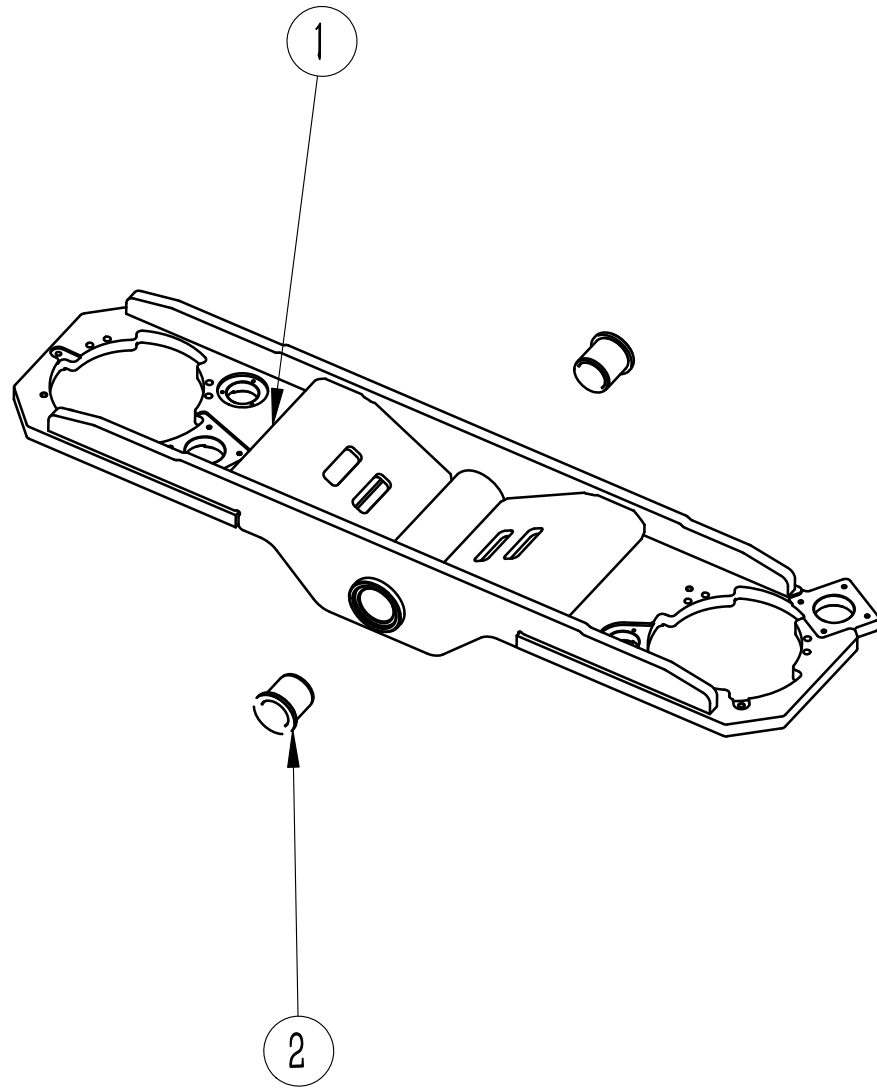


Applicable to MQC25 series models

No.	Code	Name	Qty	Remark
1	MQC25.1.3.1	Right box welding	1	
2	MQC25.1.3.2	Right box door welding	1	
3	MQC25.1.3.3	valve installation plate	1	
4	MQC25.3.1	hydraulic reservoir assembly	1	
5	MQC25.3.4	integrated steel pipe welding	1	
6	LP-133 M6	spring nut	11	
7	DB-S M6x16	hex socket head cap screw	11	
8	MQZ25.1.19.1	large leg cover plate	1	
9	MF10.1.1.6.3	small mounting plate	2	
10	TTPG16-213.5	double pipe clamp	2	
11	TGA40.1.5.3	locking handle	2	
12	D1725024HS(B)	fan	2	
13	HXQ-30x35M	Protective coil	1	
14			2	
15				
16				
17				
18				
19				
20				
21				
22				
23				
24				

Fig.1-5 MQC35.1.4 Swing bridge assembly

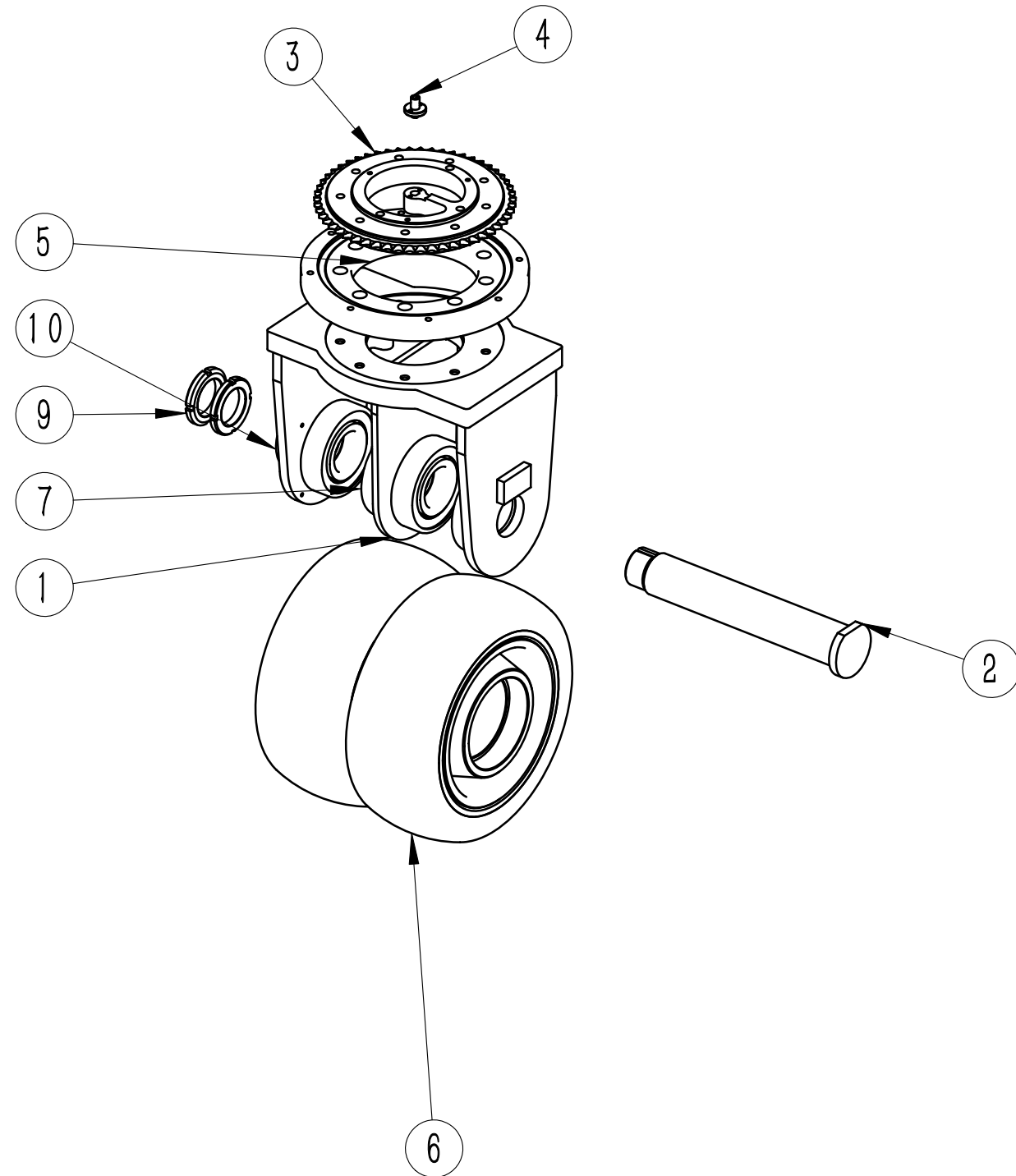
Suitable for MQC25 model



No.	Code	Name	Qty	Remark
1	MQC25.1.4.1	Swing bridge welded	1	
2	HZF607580	Sliding bearing	2	
3				
4				
5				
6				
7				
8				
9				
10				
11				
12				
13				
14				
15				
16				
17				
18				
19				
20				
21				
22				
23				
24				

Fig.1-6 MQC25.1.2 Bearing wheel assembly

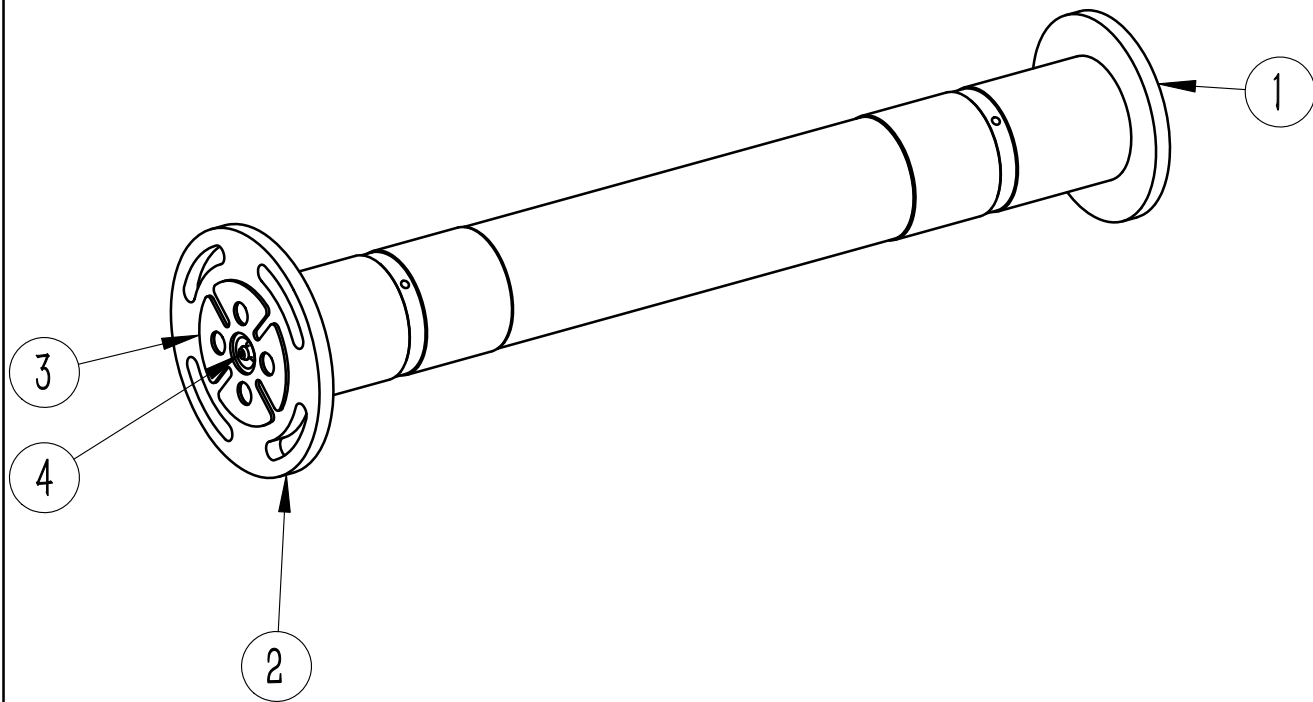
Suitable for MQC25 model



No.	Code	Name	Qty	Remark
1	MQC25.1.5.1	bearing wheel frame welding	1	
2	MQC25.1.5.2	bearing wheel axle	1	
3	MQC25.1.5.3	large sprocket	1	
4	MQC25.1.5.4	potentiometer mounting bracket	1	
5	BYT-005	slewing bearing	1	
6	12x4.5-8-SM-TF	pressed-in solid tire assembly	2	
7	CGB276 6310-2	deep groove ball bearing	4	
8	Z		1	
9	GB / T	812-1988 [round nut M45x1.5]	2	
10	TFC25.1.4.9	end cap	1	
11	GB93 4	spring washer	2	
12	GB70.1 M4x	socket head cap screw	2	
13	20			
14				
15				
16				
17				
18				
19				
20				
21				
22				
23				
24				

Fig. 1-7 MQC325.1.5 Swing axle assembly

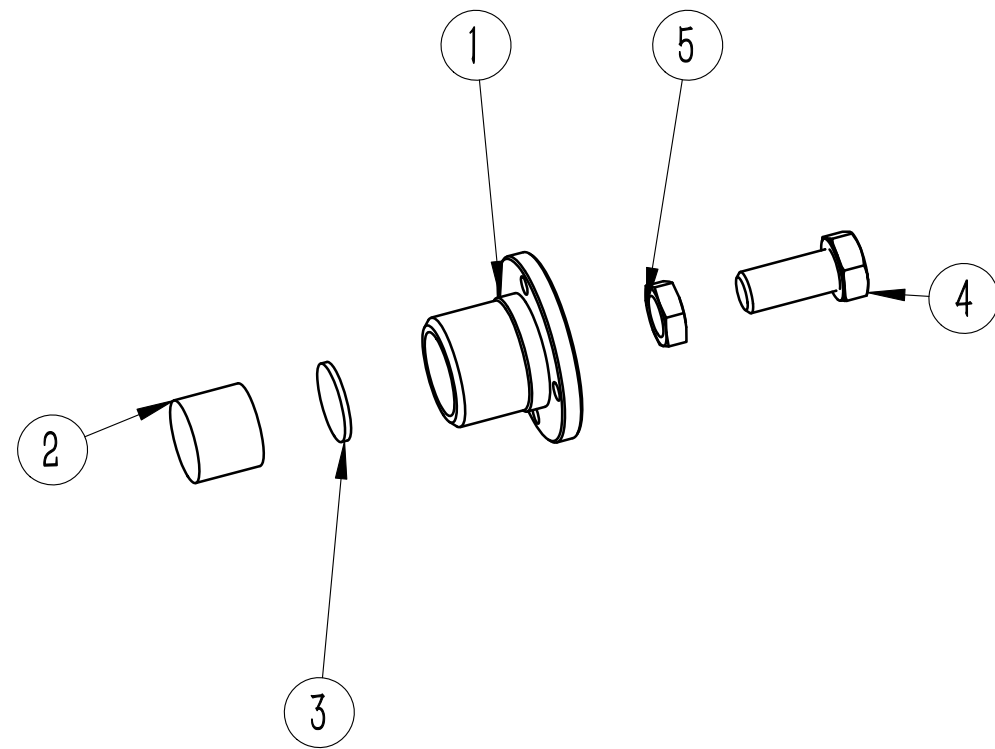
Suitable for MQC25 model



No.	Code	Name	Qty	Remark
1	MQC25.1.6.1	Swing axle welded	1	
2	MQB30.1.5.2F1	Stop plate	1	
3	01MQB30.1.5.3	bolt locking plate	1	
4	F101JB7940.1	Straight through pressure oil filling cup	2	
5	M10x1			
6				
7				
8				
9				
10				
11				
12				
13				
14				
15				
16				
17				
18				
19				
20				
21				
22				
23				
24				

Fig. 1-8 MQC25.1.9 Limit Slider Assembly

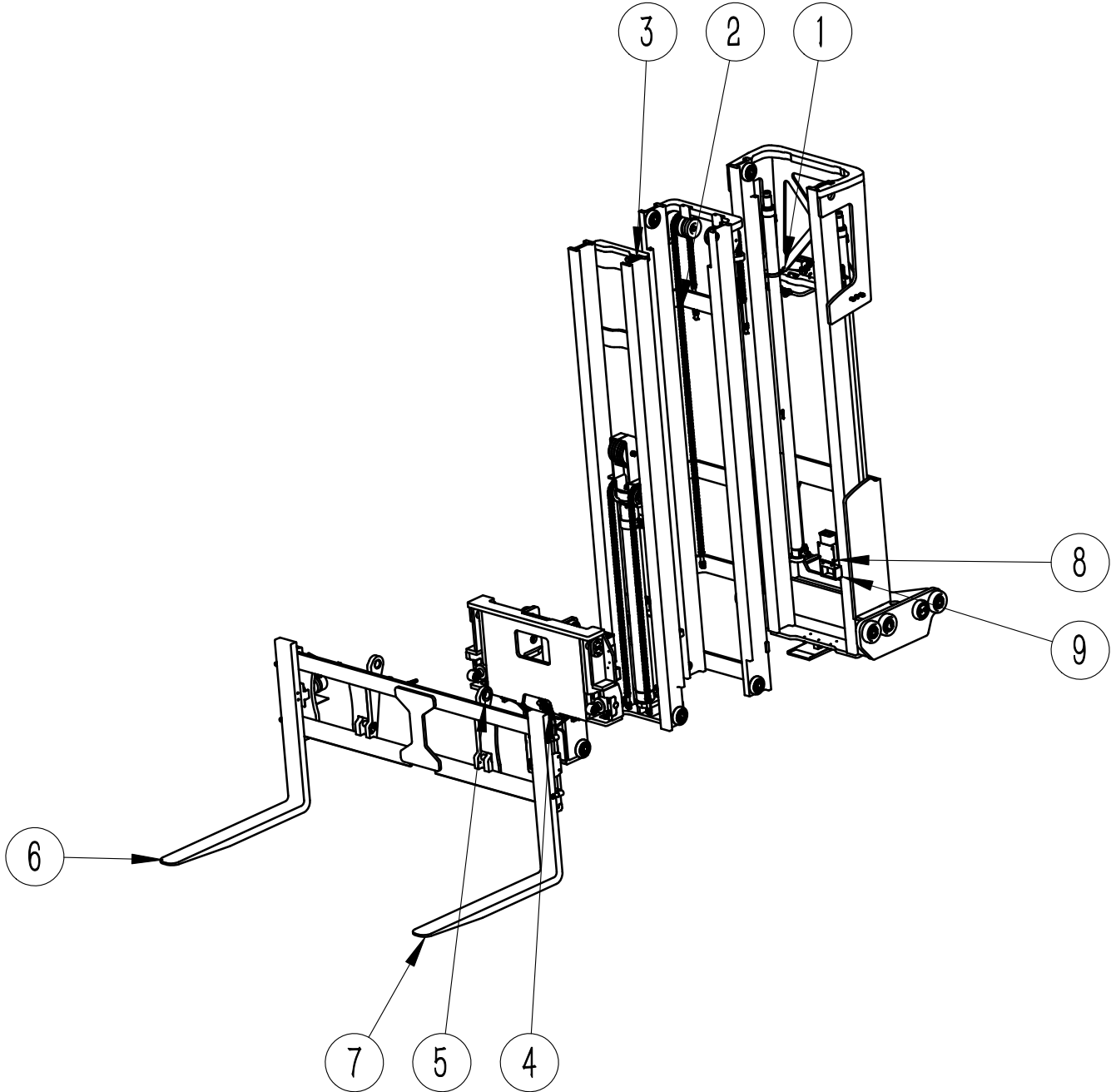
Applicable to MQC25 series models



No.	Code	Name	Qty	Remark
1	MQC25.1.11.1	Adjust screw mounting plate	1	
2	MQV15.1.1.21.1F220MQ	Nylon slider	1	
3	V15.1.1.21.3F220GB578	Flat Washers	1	
4	3 M20x45	Hexagon head bolts	1	
5	GB6172.1 M20	Hexagon Thin Nuts	1	
6				
7				
8				
9				
10				
11				
12				
13				
14				
15				
16				
17				
18				
19				
20				
21				
22				
23				
24				

Fig. 2-1 MQC25.2SQ lifting system

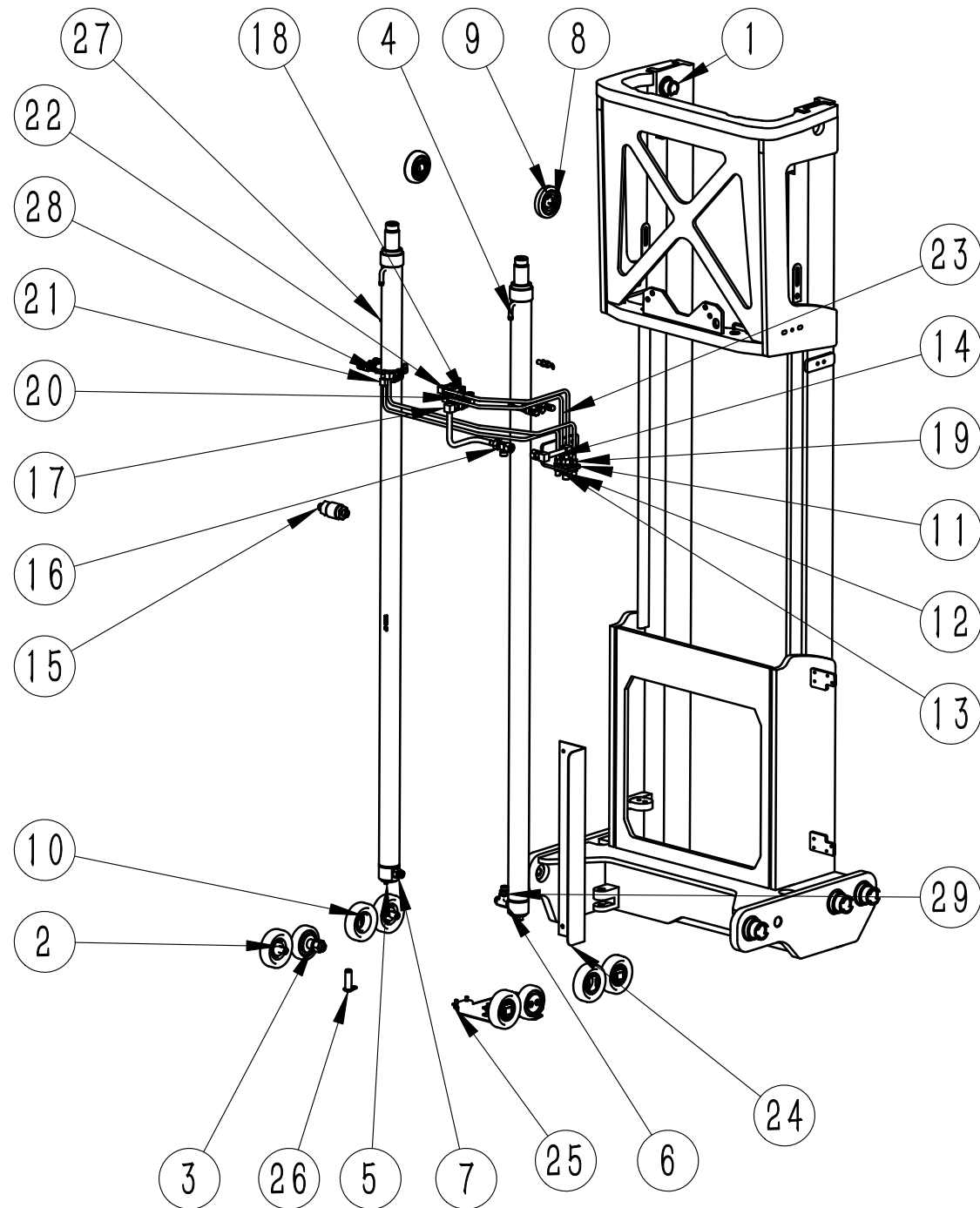
Applicable to MQC25 series models



No.	Code	Name	Qty	Remark
1	MQC25.2.1SQ	Outer mast assembly	1	
2	MQC25.2.2SQ	Middle mast assembly	1	
3	MQC25.2.3SQ	Inner mast assembly	1	
4	MQC25.2.4SQ	Inner carriage assembly	1	
5	MQC25.2.5SQ	Fork carriage assembly	1	
6	3.0T-1070x125x45L	right hook fork	1	
7	3.0T-1070x125x45A	hook type A fork	1	
8	DF-DC-1280A	lithium battery	1	
9	MQZ25.2.3.4.2SQ	right side camera cable box	1	
10				
11				
12				
13				
14				
15				
16				
17				
18				
19				
20				
21				
22				
23				
24				

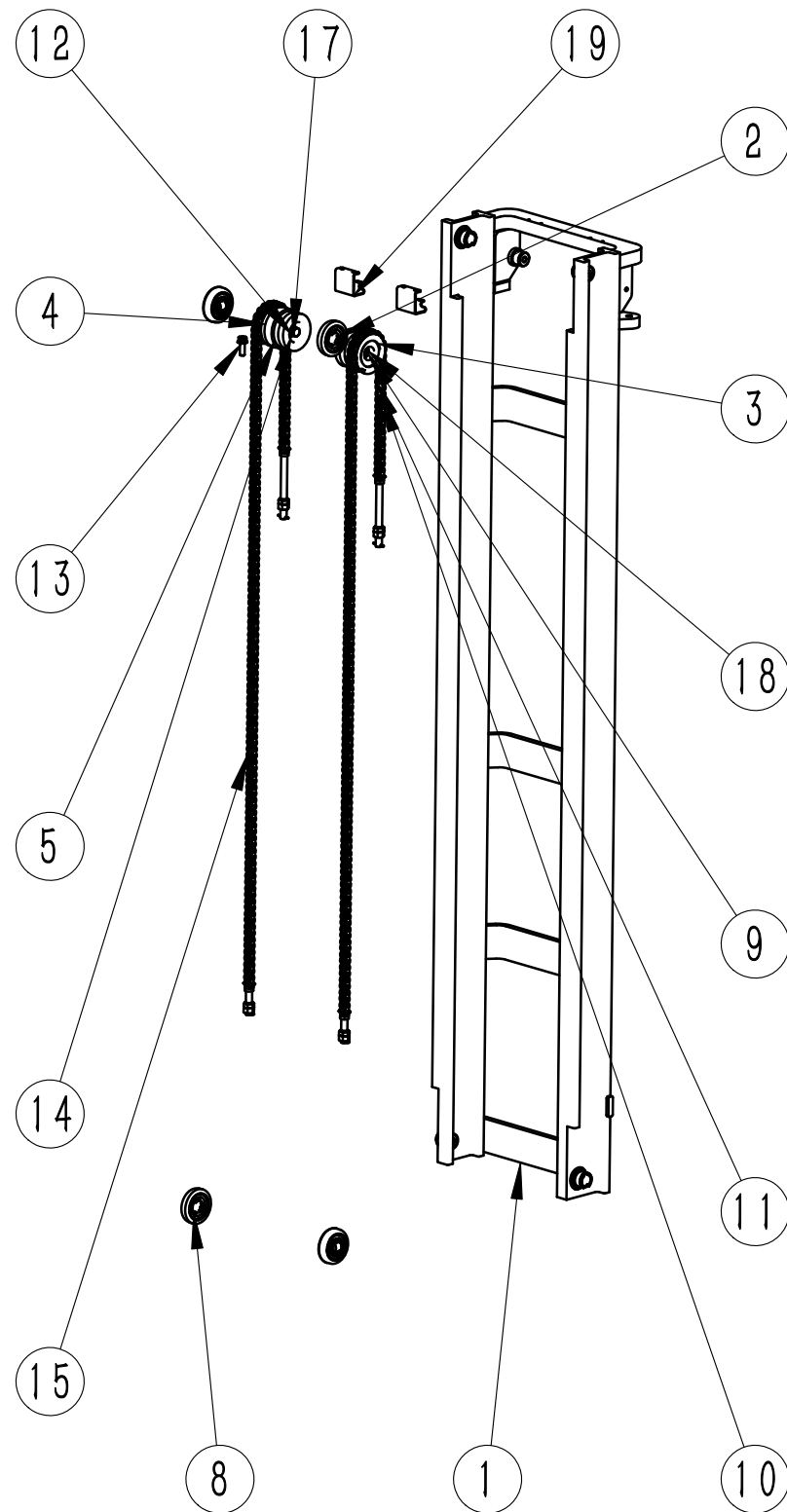
Fig. 2-2 MQC25.2.1SQ-ZP outer mast assembly

Applicable to MQC25 series models



No.	Code	Name	Qty	Remark
1	MQC25.2.1.1SQ	Outer mast welding	1	
2	760311K8T.1	Composite roller body	6	
3			2	
4	T M4556-MF5500-HQ-R-ZP	Lift cylinder	1	
5	TM4556-MF5500-HQ-L-ZP	Lift cylinder	1	
6	SKCMH-22-22-20OGDQ	tee pipe fitting	1	
7	BYT-QDF-3t-00	cut-off valve assembly	1	
8	CBA101.5-1TS	composite roller assembly	2	
9	GB894.1 45	shaft retaining ring	2	
10	GB894.1 55	shaft retaining ring	6	
11	MQC35.2.8.1SQ	external frame joint mounting plate	1	
12	S6C-22LN	straight through plate joint	1	
13	6C-14LN	straight through plate joint	4	
14	MQC35.3.10.5SQ	lifting steel pipe assembly I	1	
15	NXSF2-16-2-49L	speed limiting valve	1	
16	SCC-22W	internal thread main branch tee	1	
17	MQC25.3.10.6SQ	joint lifting steel pipe assembly II	1	
18	S6C9-22LN	right-angle through-plate joint	1	
19	MQC35.3.10.4SQ	inclined steel pipe assembly II	1	
20	S6C9-14LN	right-angle through-plate joint	4	
21	MQC35.3.10.3SQ	inclined steel pipe assembly I	1	
22	MQC25.3.10.2SQ	adjustable distance steel pipe assembly II	1	
23	MQC25.3.10.1SQ	adjustable distance steel pipe assembly I	1	
24	MQC25.2.1.2	oil pipe protective plate	1	
25	MQD30.2.1.4SQ	bottom limit plate assembly	1	
26	TF15.3.13	front moving cylinder pin shaft welding	2	
27	IME12-04BPSZW2S	proximity switch	2	
28	UM08-67-105-30B-ZP	U-bolt assembly	2	
29	S1CH-22DQ	straight through joint	1	

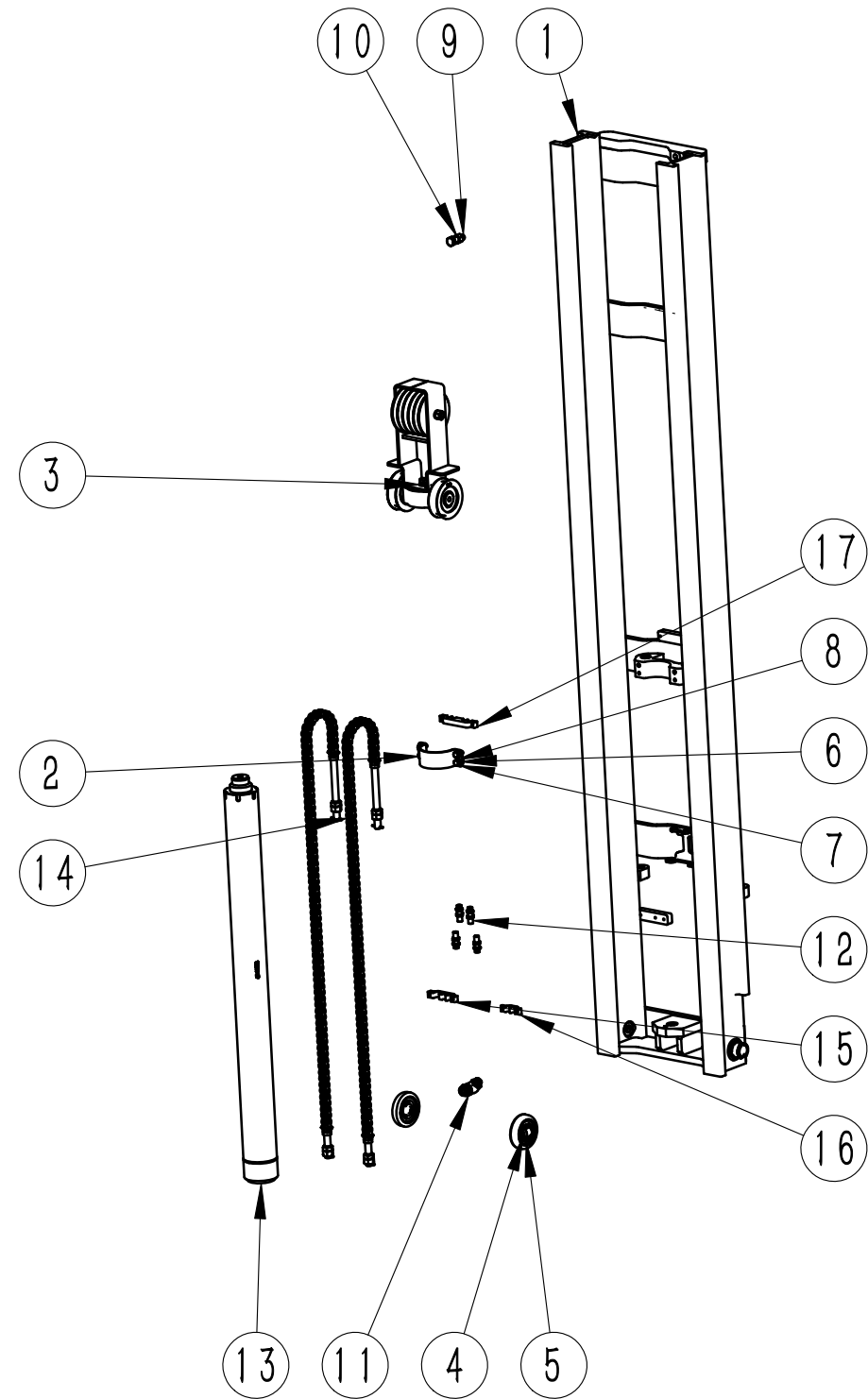
Fig2-3 MQC25.2.2SQ the middle mast component



Applicable models

S/N	Model	Name	Quantity	Remark
1	MQC25.2.2.1SQ	Mid -mast welding	1	
2	CBA101.5-1TS	Composite roller	4	
3	780708K	Chain wheel	2	
4	HL23-080-33	pulley	1	
5	HL23-85-41	pulley	2	
6	GT233015	spacer	2	
7	GT172270	spacer	1	
8	GB894.1 45	External retaining ring	4	
9	GB894.1 40	External retaining ring	2	
10	GB5786 M14×1.5×45	Hexagonal bolt	2	
11	GB93 14	spring washer	2	
12	GB93 16	spring washer	2	
13	GB97.1 14	flat washer	2	
14	GB97.1 16	flat washer	2	
15	LH1234-155	Lifting chain group	2	
16	GT172238	Spacer	1	
17	GB5782 M16×100 12.9	Hexagonal bolt	1	
18	GB5783 M16×60	Hexagonal bolt	1	
19	MQC25.2.2.2SQ	Pulley baffle	2	
20				
21				
22				
23				
24				

Fig2-4 MQC25.2.3SQ Inner mast assembly



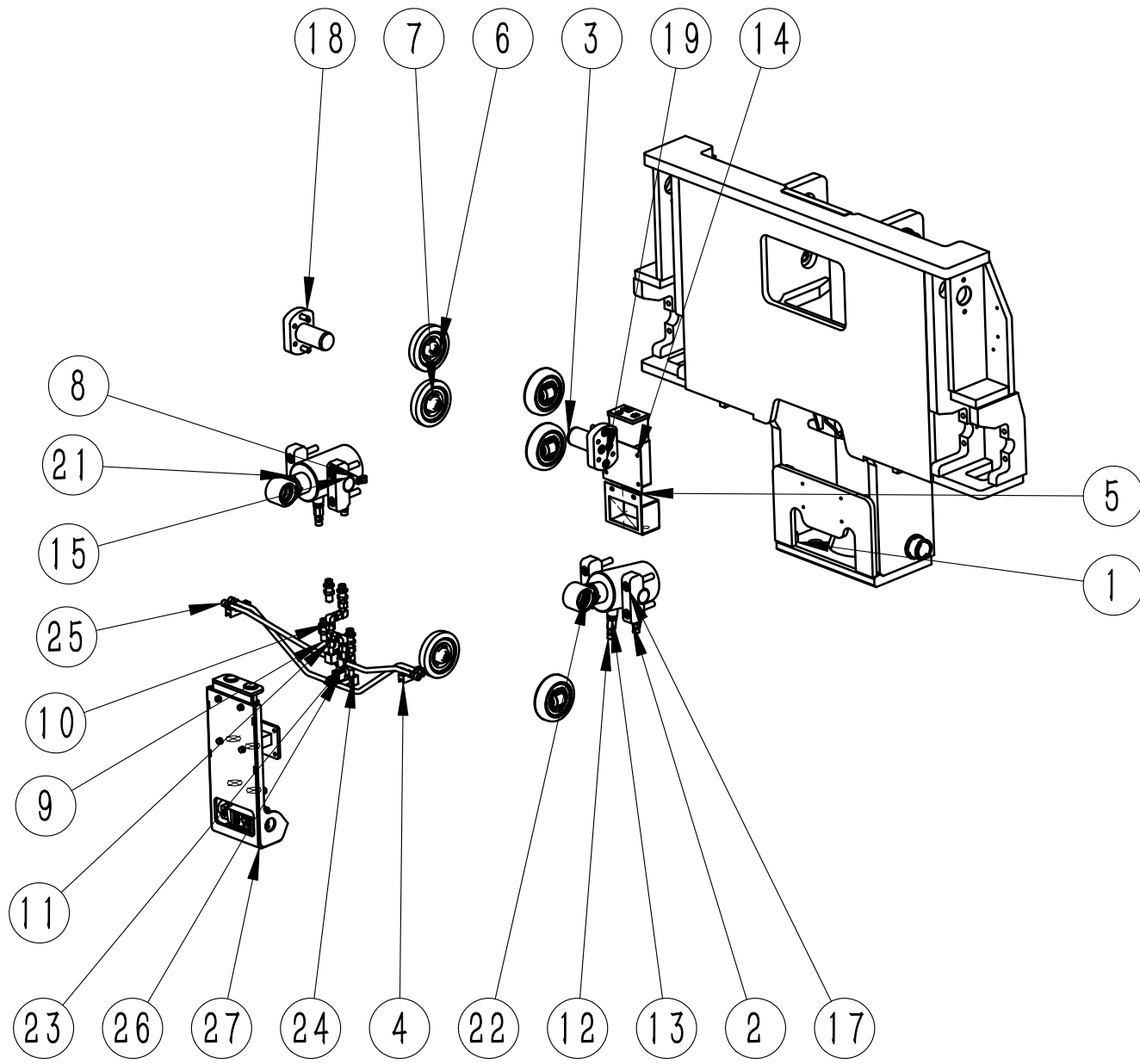
Applicable Models

S/N	Model	Name	Quantity	Remark
1	MQC25.2.3.1SQ	Inner mast welding	1	
2	TF25.3.8SQ	Front lifting cylinder clamp	1	
3	MQC35.2.3.2SQ	Rubber wheel holder assembly	1	
4	CBA101.5-1TS	Composite roller	2	
5	GB894.1 45	circlip for shaft	2	
6	GB5783 M10×25	Hexagonal bolt	4	
7	GB97.1 10	flat washer	4	
8	GB93 10	spring washer	4	
9	GB5783 M16×50	Hexagonal bolt	1	
10	GB6170 M16	Type 1 hexagonal nut	1	
11	S1CG9-22-120G(AH13)	union elbow	1	
12	S6C-14LN	Straight through the joint	4	
13	TM6585-MFZP	Lift cylinder	1	
14	LH1234-155	Lift chain group	2	
15	1FZ20-B7001	Left oil pipe fixed board	1	
16	1FZ20-B8001	Right oil pipe fixed board	1	
17	1FZ20-B7001	Left oil pipe fixed board	1	
18				
19				
20				
21				
22				
23				
24				

Fig2-5 MQC25.2.4SQ Internal slide component

Applicable Models

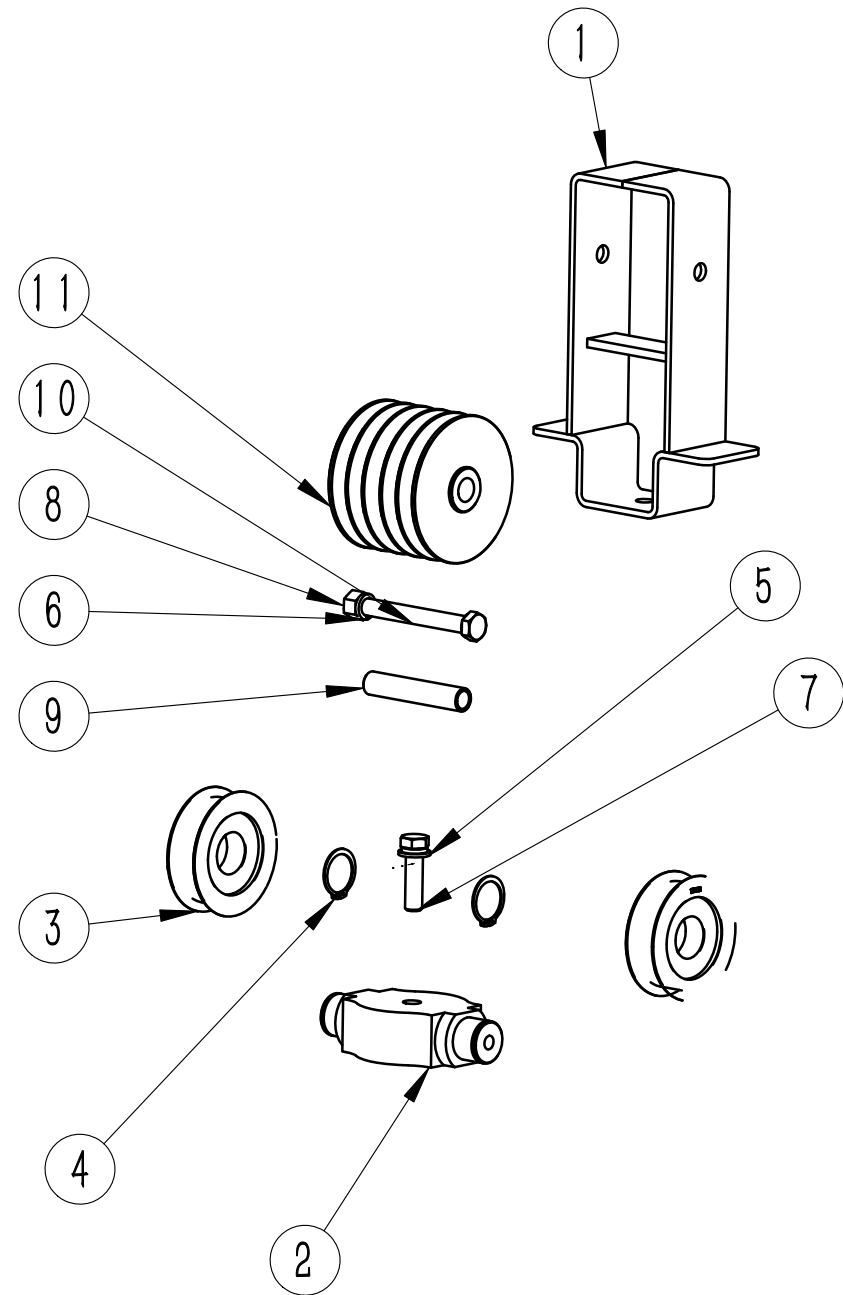
S/N	Model	Name	Quantity	Remark
1	MQC25.2.4.1SQ	Internal slide welding	1	
2	MQD30.2.4.3SQ	Tilt cylinder cover plate	4	
3	MQD30.2.4.4SQ	Pin	2	
4	TF15.2.18SQ	Front cylinder oil pipe clamp fixing cover plate	2	
5	MQZ25.2.3.4.2SQ	Right camera junction box	1	
6	CBA101.5-1TS	Composite roller	6	
7	GB894.1 45	circlip for shaft	6	
8	RSC1-6	linecard	1	
9	S6C-14LN	Straight through plate joint	4	
10	S2C9-14W	Internal and external thread conversion 90° joint	4	
11	SCC-14W	female branch tee	2	
12	S2C-14W	Male female adapter	4	
13	S1CH-14DQ	straight joint	4	
14	DF-DC-1280A	Lithium battery	1	
15	HZF303426	sliding bearing	4	
16	GB93 12	Spring washer	8	
17	GB70.1 M12×65	Hexagon socket head cap screws	8	
18	MQD30.2.4.6SQ	Disassembly block	2	
19	GB70.1 M10×30	Hexagon socket head cap screws	8	
20	GB93 10	Spring washer	8	
21	SCG75-45×48R	Right tilt cylinder	1	
22	SCG75-45×48L	Left tilt cylinder	1	
23	MQC25.3.10.7	Inclined steel pipe assembly III	1	
24	MQC25.3.10.8	Inclined steel pipe assembly IV	1	



S/N	Model	Name	Quantity	Remark
25	MQC25.3.10.9	Tilted steel pipe component V	1	
26	MQC25.3.10.10	Tilted steel pipe component VI	1	
27	MQC25.2.4.2	Camera installation component	1	

Fig2-6 MQC35.2.3.2SQ Rubber wheel holder assembly

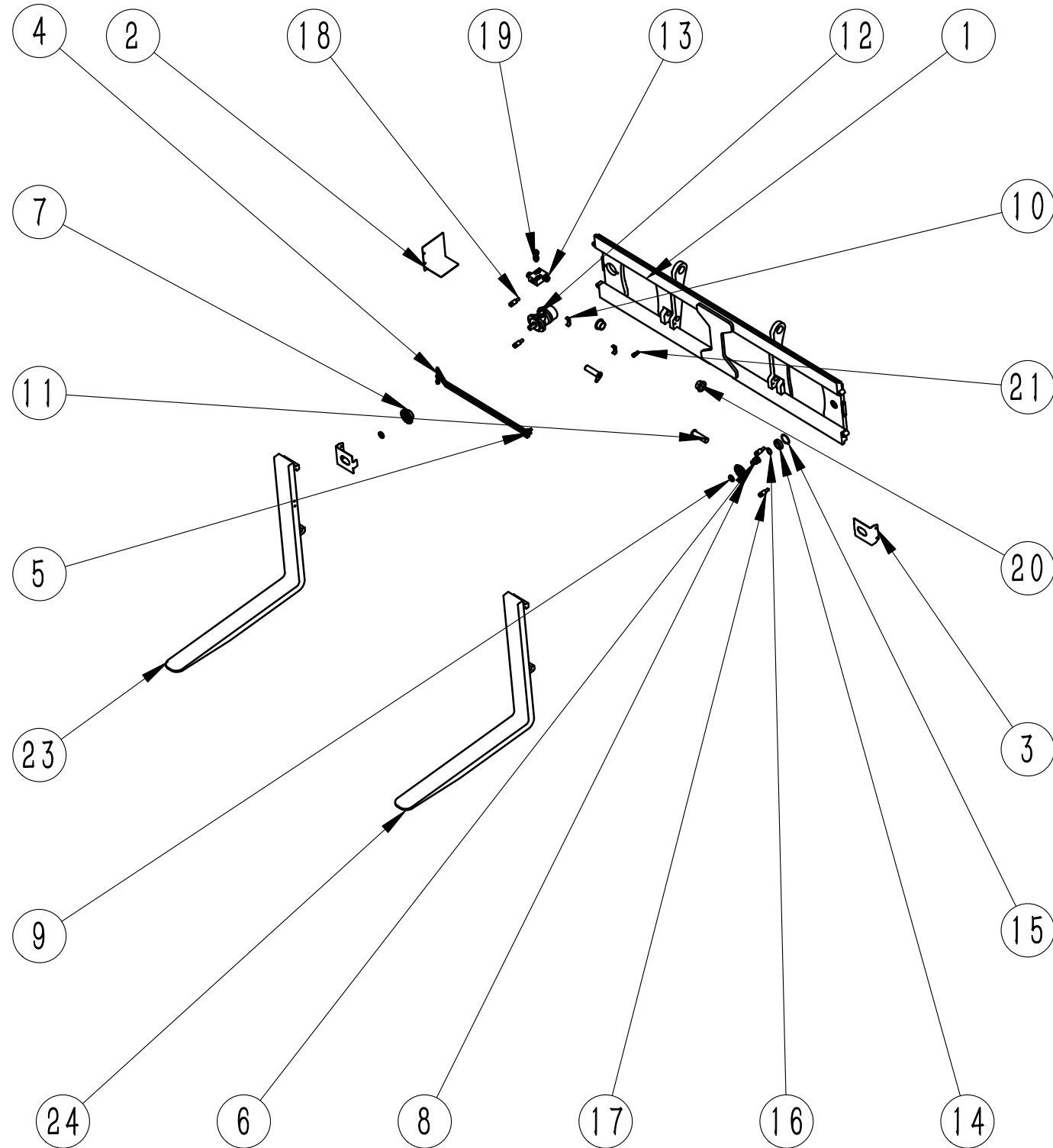
Applicable Models



S/N	Model	Name	Quantity	Remark
1	MQC35.2.3.2.1SQ	Welding of rubber wheel holder	1	
2	TF25.2.6SQ	Chain wheel rack	1	
3	780708K	Sprocket	2	
4	GB894.1 40	External Circlips	2	
5	GB97.1 16	Flat washer	1	
6	GB93 16	Spring washer	2	
7	GB5786 M16×1.5×60	Hexagon headed bolt	1	
8	GB6170 M16	1-type hexagon nut	1	
9	GT1722115	Spacer	1	
10	GB5782 M16×150	Hexagon headed bolt	1	
11	MFZ25.2.14.2SQC	pulley	1	
12				
13				
14				
15				
16				
17				
18				
19				
20				
21				
22				
23				
24				

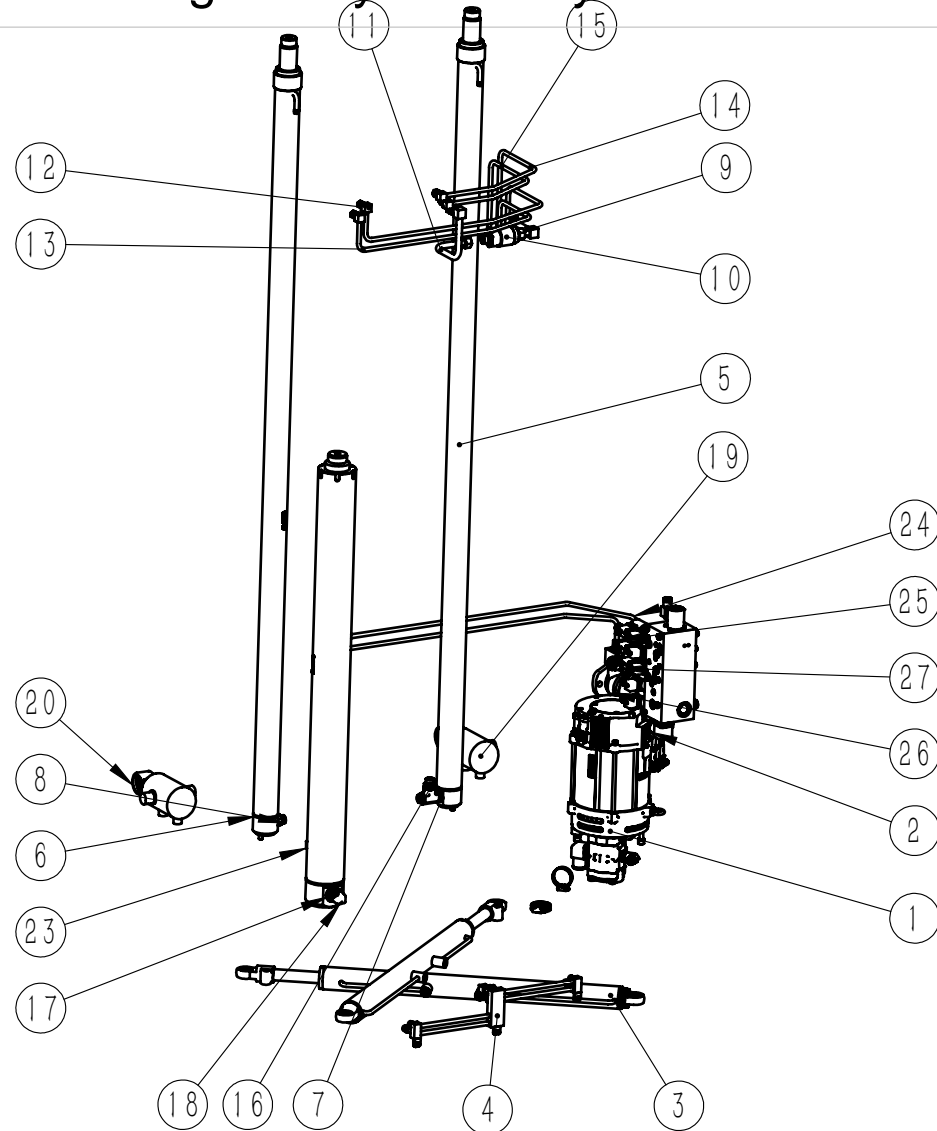
Fig2-7 MQC25.2.5SQ Fork carrier assembly

Applicable Models



S/N	Model	Name	Quantity	Remark
1	MQC25.2.5.1SQ	Welding of fork carrier	1	
2	MQD30.2.5.2.1SQ	Hydraulic motor cover	1	
3	MQD30.2.5.3.1SQ	Hydraulic motor guard	2	
4	MQC25.3.10.11	positioner steel pipe assembly III	1	
5	MQC25.3.10.12	positioner steel pipe assembly IV	1	
6	TFC25.2.5.4	Sprocket shaft	1	
7	TFC25.2.5.5	positioner sprocket I	1	
8	TFC25.2.5.6	positioner sprocket II	1	
9	TFC25.2.5.7	fender ring	2	
10	MF13.1.22	Forward tubing clamp	2	
11	XZ30-085-LW	Padeye pin	2	
12	BMP-200-2-A-D	Brake motor	1	
13	FYRHD-10-D	Two way relief valve	1	
14	GB276 6007-2Z	Deep groove ball bearing	1	
15	GB893.1 62	Circlips for hole	1	
16	GB894.1 35	External Circlips	1	
17	GT172330	Spacer	4	
18	GB70.1 M14×60	Hexagon socket head cap screws	4	
19	S1CG-14-08DQ	Straight joint	2	
20	HZF405035	Sliding bearing	2	
21	S2C-14W	Male female adapter	1	
22	MQC25.2.5.5-1200	Right side of fork	1	
23	3.0T-1070×125×45L	Right side of fork	1	
24	3.0T-1070×125×45A	Hook A-type fork	1	

### Fig3- 1 Hydraulic system



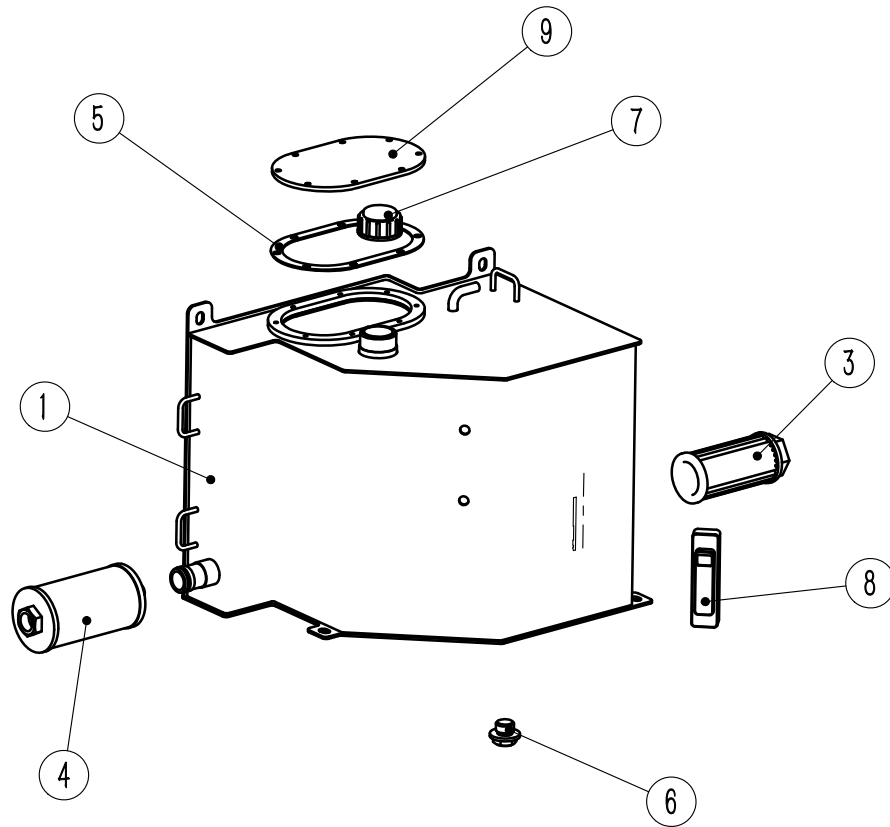
### Applicable Models

S/N	Model	Name	Quantity	Remark
1	MQC25.3.2	Oil pump motor assembly	1	
2	MQC25.3.3	Lifting solenoid valve assembly	1	
3	QY3050-MQC700	FORWARD CYLINDER	2	
4	MQC25.3.10.11	Forward steel pipe welding	1	
5	TM4556-MF5500-HQ-R-ZP	Lifting cylinder	1	
6	TM4556-MF5500-HQ-L-ZP	Lifting cylinder	1	
7	SKCMH-22-22-200GDQ	Tee joint	1	
8	BYT-QDF-3t-00	Shut-off Valve	1	
9	MQC35.3.10.5SQ	Lifting steel pipe assembly I	1	
10	NXSF2-16-2-49L	Speed limiting valve	1	
11	MQC25.3.10.6SQ	Lifting steel pipe assembly II	1	
12	MQC35.3.10.4SQ	tilting steel pipe assembly II	1	
13	MQC35.3.10.3SQ	tilting steel pipe assembly I	1	
14	MQC25.3.10.2SQ	positioner steel pipe assembly II	1	
15	MQC25.3.10.1SQ	positioner steel pipe assembly I	1	
16	S1CH-22DQ	straight joint	1	
17	S1CG9-22-120G(AH13)	union elbow	1	
18	TM6585-MFZP	Lifting cylinder	1	
19	SCG75-45 x 48R	Right tilt cylinder	1	
20	SCG75-45 x 48L	Left tilt cylinder	1	
21	MQC25.3.10.7	tilting steel pipe assembly III	1	
22	MQC25.3.10.8	tilting steel pipe assembly IV	1	
23	MQC25.3.10.10	tilting steel pipe assembly VI	1	
24	MQC25.3.10.11	positioner steel pipe assembly VI	1	

S/N	Model	Name	Quantity	Remark
	MQC25.3.10.12	Positioner steel pipe assembly IV	1	
	BMP-200-2-A-D	Brake motor	1	
	FYRHD-10-D	Two way relief valve	1	

Fig3-2 MQC25.3.1 Hydraulic tank group

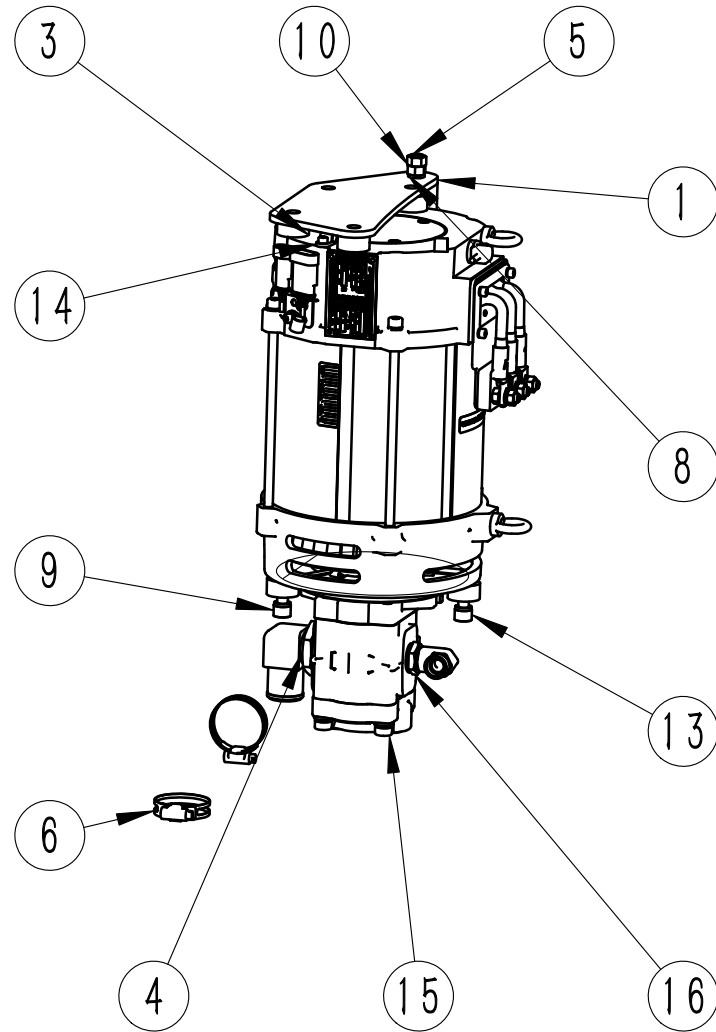
Applicable Models



S/N	Model	Name	Quantity	Remark
1	MQC25.3.1.1	Oil tank welding	1	
2	MFZ25.3.1.2	Welding of oil suction flange	1	
3	WU-100×80-J	Oil suction filter	1	
4	Y0816A	Return oil filter	1	
5	MF25.3.1.3	Rubber pad	1	
6	QC385 M24×2	Hexagon head magnetic screw plug	1	
7	TF15.3.5	Fuel tank cap	1	
8	YWZ-100T	Level thermometer	1	
9	MF25.3.1.2	Fuel tank cover plate	1	
10				
11				
12				
13				
14				
15				
16				
17				
18				
19				
20				
21				
22				
23				
24				

Fig3-3 MQC25.3.2 Oil Pump Motor Assembly Components

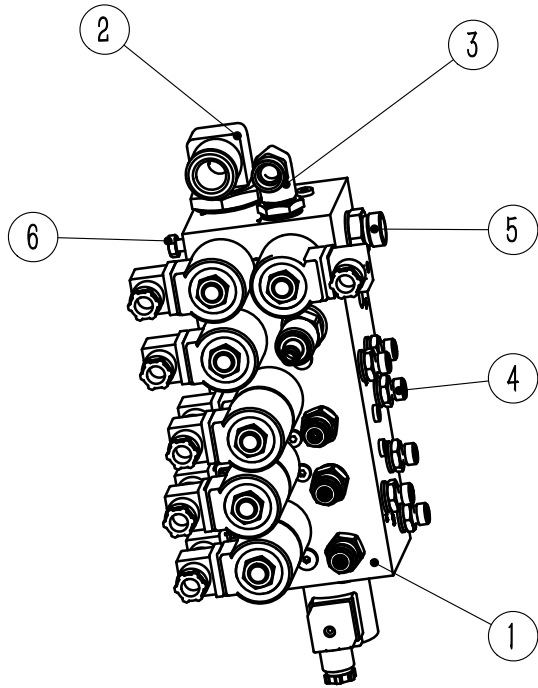
(Applicable Models Series)



No.	Code	Name	Qty	Remarks or Applicable Models
1	MQC25.3.2.1	Pump Motor Top Clamp Plate	1	
2	MFZ20.3.2.3SQH	Bracket	1	
3	TFZ16.3.2.5	Rubber pad	7	
4	GJT209L	Union elbow	1	
5	XJJZQ10274030	Rubber damper	1	
6	Q67245	Double wire type hoop	2	
7	GB5789 M10×20	Hexagon flange face bolts	2	
8	GB93 10	Spring washer	7	
9	GB70.1 M10×40	Hexagon socket cap screws	2	
10	GB6171 M10×1	I Shape hexagonal nut	4	
11	GB97.1 10	Flat washer	2	
12	GB70.1 M10×20	Hexagon socket cap screws	2	
13	GB70.1 M10×25	Hexagon socket cap screws	1	
14	XQJ12.5-BYT2	Lifting motor	1	
15		DSG05C20F9H1-R237C	1	
16	S1CG9-22-080GDQ	Union elbow	1	
17				
18				
19				
20				
21				
22				
23				
24				

Fig3-4 MQC25.3.3 Lifting Electronic Valve Components

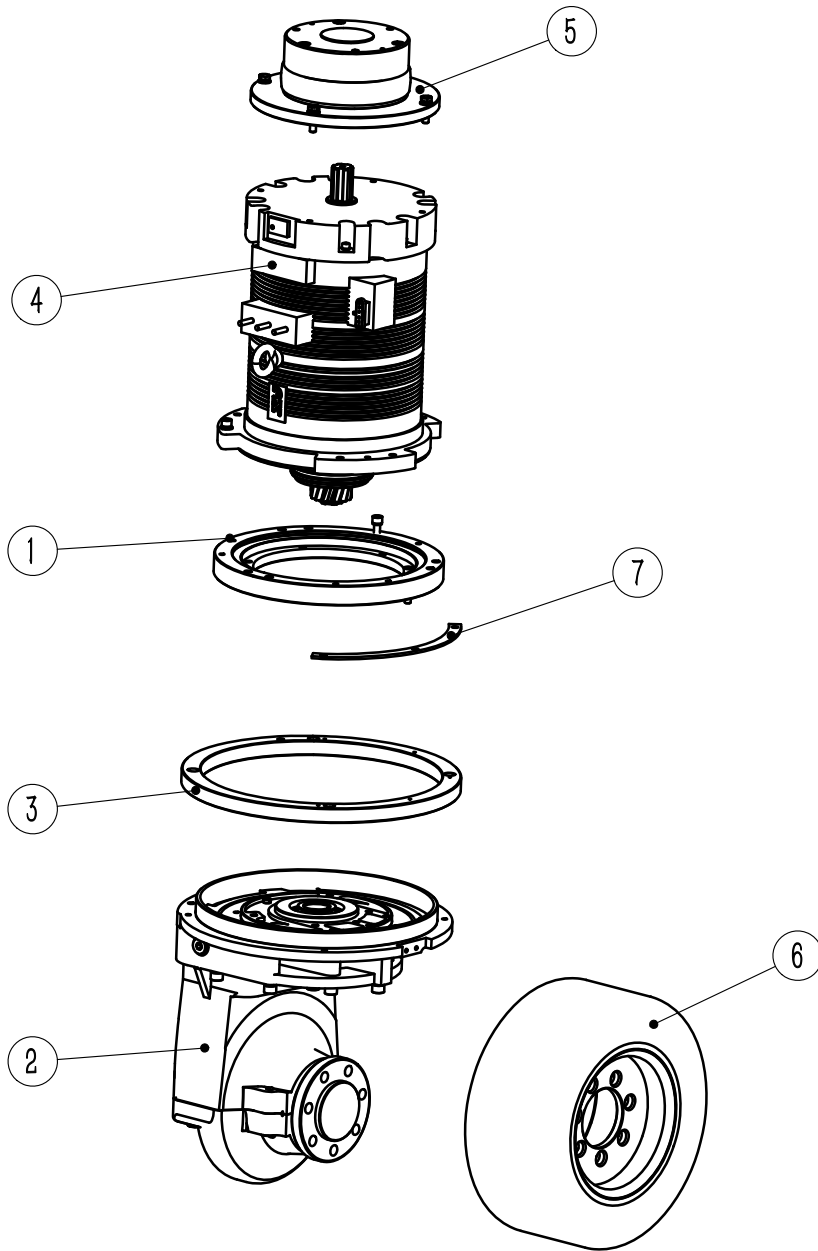
(Applicable Models Series)



No.	Code	Name	Qty	Remarks or Applicable Models
1	MQD30.3.7.1	Lifting Electronic Valve	1	
2	GJT209L	Union elbow	1	
3	S1CG9-22-080GDQ	Union elbow	1	
4	S1CG-14-04	Through joint	6	
5	1CG-22-08	Through joint	1	
6	GB5783 M8×25	Hexagon bolts	4	
7	Q67248	Double wire type hoop	1	
8	S2C-14W	Inside and outside thread transfer joint	4	
9				
10				
11				
12				
13				
14				
15				
16				
17				
18				
19				
20				
21				
22				
23				
24				

Fig4-1 MQC25.4 Driving System

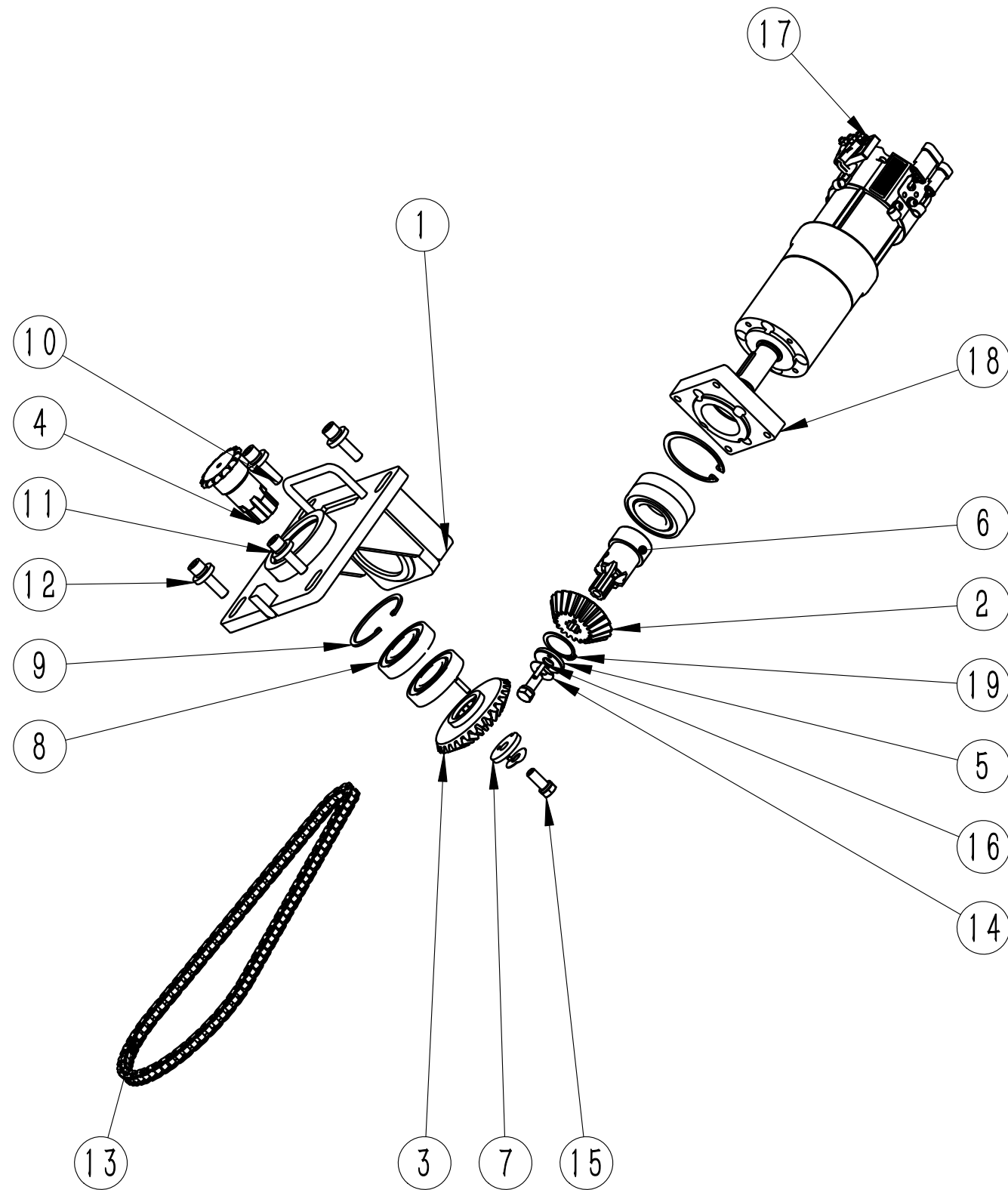
(Applicable Models Series)



No.	Code	Name	Qty	Remarks or Applicable Models
1	TFZ16.4.4	Rotary bearing components	1	
2	BQD34301.1	Gearbox Assembly	1	
3	MQC25.4.1	Steering gear ring	1	
4	TFZ16.4.3	Drive motor assembly components	1	
5	TFZ20.6.3	Drive brake assembly components	1	
6	13.5×5.5-8-MQC	Drive wheel assembly	1	
7	MF15.4.35	Proximity switch sensing plate	1	
8				
9				
10				
11				
12				
13				
14				
15				
16				
17				
18				
19				
20				
21				
22				
23				
24				

Fig5-1 MQC25.5.1 Front Seering Components

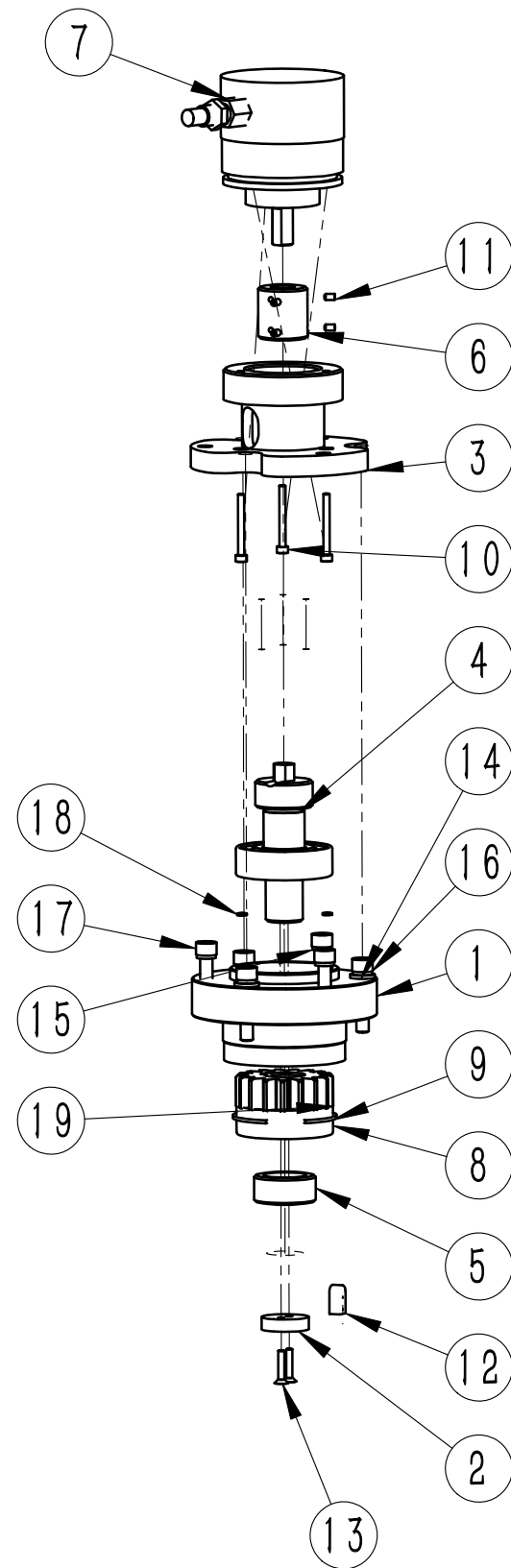
(Applicable Models Series)



No.	Code	Name	Qty	Remarks or Applicable Models
1	MQC25.5.1.1	Front steering welded	1	
2	MQV15.5.1.2F216	Steering drive bevel gear	1	
3	MQV15.5.1.3F216	Steering driven bevel gear	1	
4	MQV15.5.1.4F216	Minor sprocket	1	
5	MQV15.5.1.5F216	Stop collar	1	
6	MQC25.5.1.6	Steering shaft	1	
7	MFQ25.1.2.2.7	Stop collar	1	
8	GB276 6208-2Z	Deep groove ball bearing	4	
9	GB893.1 80	Circlip for hole	2	
10	GB70.1 M12×45	Hexagon socket cap screws	4	
11	GB93 12	Spring washer	6	
12	GT133006	Spacer bush	4	
13	08A-1-92	Simplex roller chain	1	
14	GB856 12	External tab washer	2	
15	GB5786 M12×1.5×30	Hexagon bolt	2	
16	GB879.1 5×24	Elastic cylinder pin	2	
17			1	
18	MF15.5.8.3	Motor connecting plate	1	
19	GB894.1 40	Circlip for shaft	1	
20				
21				
22				
23				
24				

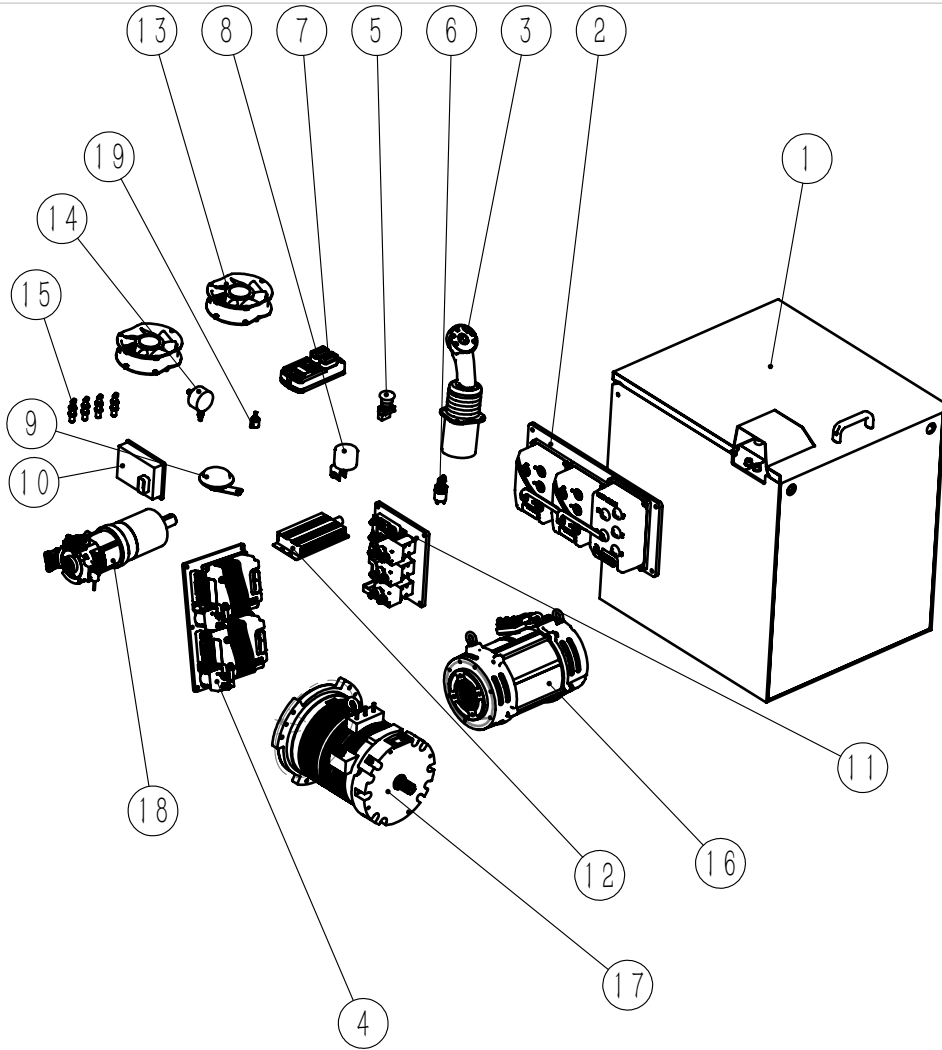
Fig5-2 MQC25.5.2 Rear Steering Encoder Component

(Applicable Models Series)



No.	Code	Name	Qty	Remarks or Applicable Models
1	TFC25.5.4.1	Install the base	1	
2	TFC25.5.4.5	Washer	1	
3	TFC25.5.4.6	Taper reduction sleeve	1	
4	TFC25.5.4.7	Small shaft	1	
5	GT213013	Spacer bush	1	
6	LZQF94011 10×10	Shaft coupling	1	
7	OCD-DZB1B-1213-C10V	Encoder	1	
8	GB276 6204-2Z	Deep groove ball bearing	2	
9	GB893.1 47	Circlip for hole	1	
10	GB70.1 M3×30	Hexagon socket cap screws	3	
11	GB77 M3×5	Hexagon screws with flat end	4	
12	GB1096 6×6×140	Plain flat bond	1	
13	GB70.3 M3×16	Hexagon countersunk head screws	2	
14	GB97.1 6	Flat washer	3	
15	GB93 6	Spring washer	6	
16	GB70.1 M6×30	Hexagon socket cap screws	3	
17	GB70.1 M6×20	Hexagon socket cap screws	3	
18	GB93 3	Spring washer	3	
19	MQC25.5.2.1	Detection pinion gear	1	
20				
21				
22				
23				
24				

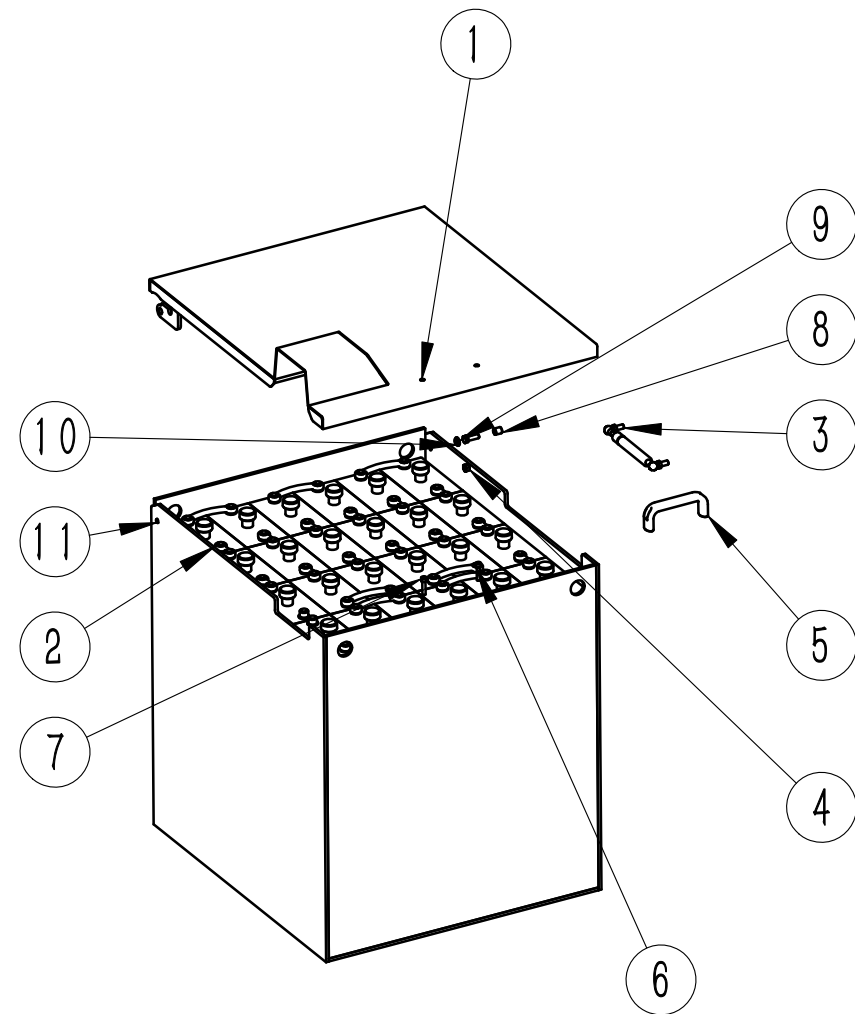
Fig6-1 MQC25.7 Electric System



(Applicable Models Series)

No.	Code	Name	Qty	Remarks or Applicable Models
1	MQC25.7.1	Battery components	1	
2	1232SE-5321-7Q	Electronic control assembly	1	
3	BV85R	Handle	1	
4	MQC25.7.2	Steering controller component	1	
5	NP2-BS542	Emergency power off switch	1	
6	JK410	Ignition switch	1	
7	C420	Controller	1	
8	DJB-24B-ZP-A	Astern buzzer assembly	1	
9	DL2280-24V	Electric speaker	1	
10	JCP200-050A	Viewing screen on board	1	
11	MQC35.7.2	Contactora assembly	1	
12	ZB030048024TA-BYT	DC Converter	1	
13	D1725024HS(B)	Fan	2	
14	EAM580-SC0.5LC6	Absolute value encoder	2	
15	IME12-04BPSZW2S	Proximity switch	4	
16	XQJ12.5-BYT2	Lifting motor	1	
17	XQJ6.5-BYT2	Drive motor	2	
18	YDZ0.6-4-7970	Steering unit	2	
19	WDH22L	0505 W360 Digital potentiometer	2	
20				
21				
22				
23				
24				

Fig6-2 MQC25.7.1 Battery Components



(Applicable Models Series)

No.	Code	Name	Qty	Remarks or Applicable Models
1	MQC25.7.1.1	Battery cover welded	1	
2	QDC48-500-3	Traction battery group	1	
3			1	
4	GB6170 M8	1 Shape hexagonal nut	1	
5	M.643FM-140B-6	Handle	1	
6	GB93 6	Spring washer	2	
7	GB70.1 M6×30	Hexagon socket cap screws	2	
8	GT091213	Spacer bush	2	
9	GB97.1 8	Flat washer	2	
10	GB93 8	Spring washer	2	
11	GB5783 M8×25	Hexagon bolt	2	
12				
13				
14				
15				
16				
17				
18				
19				
20				
21				
22				
23				
24				