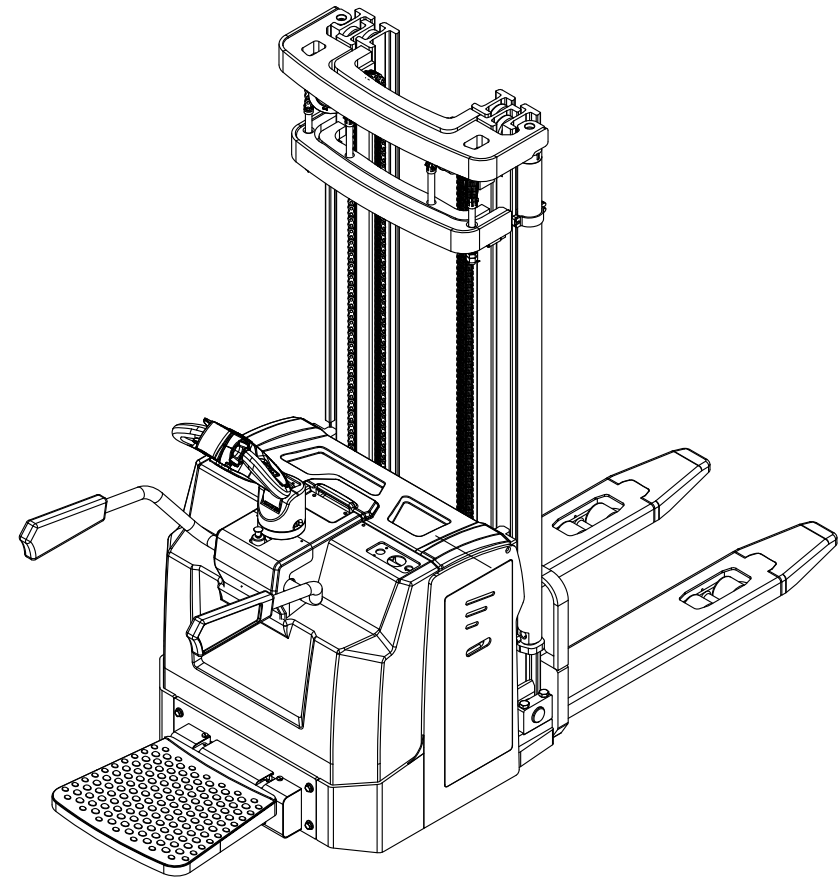




PARTS LIST

ELECTRIC PALLET STACKER (MB SERIES)



BANYITONG SCIENCE&TECHNOLOGY DEVELOPING CO.,LTD.

INSTRUCTION

1. This parts list include the main parts of the MB pallet stacker;
2. Parts change indicates the time, such as "-2008.8" means that the parts was used until August 2008, "2006.10 -" means that the parts was used since October 2006;
3. When user purchase the parts, please write clearly the item no. and series no.of pallet stacker, the item no. , name and quantity of the required part.
4. To ensure quality,please use our parts when repair and change the parts.
- 5.This parts list applies to the standard model configuration, if you have different equipment requirements to further enhance the security requirements, please promptly explain the purchase;
6. We'll improve or change some part to improve the quality of pallet stacker ,this parts list can't modify one by one on time, thanks for understand. Please contact with our sales or distributor for **details**.

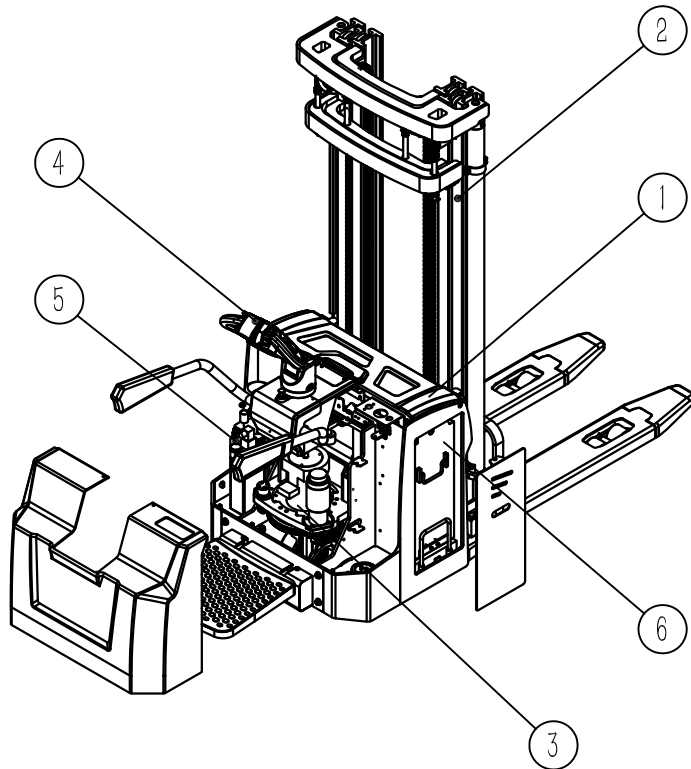
Catalog

NO.	PARTS NO.	NAME	APPLICABLE MODEL	PAGE
General figure				
Fig.0-1	MB series	Pallet stacker		0-1
Body system				
Fig.1-(1~2)		Body system		1-(1~2)
Fig.1-3	TEP25.1.2.8	Caster assembly		1-3
Fig.1-4	TB2025.1.13	Front wheel assembly		1-4
Lifting system				
Fig.2-(1~6)		Lifting system		2-(1~6)
Hydraulic system				
Fig.3-(1~2)		Hydraulic system		3-(1~2)
Fig.3-(3~4)		Hydraulic schematic		3-(3~4)

Catalog

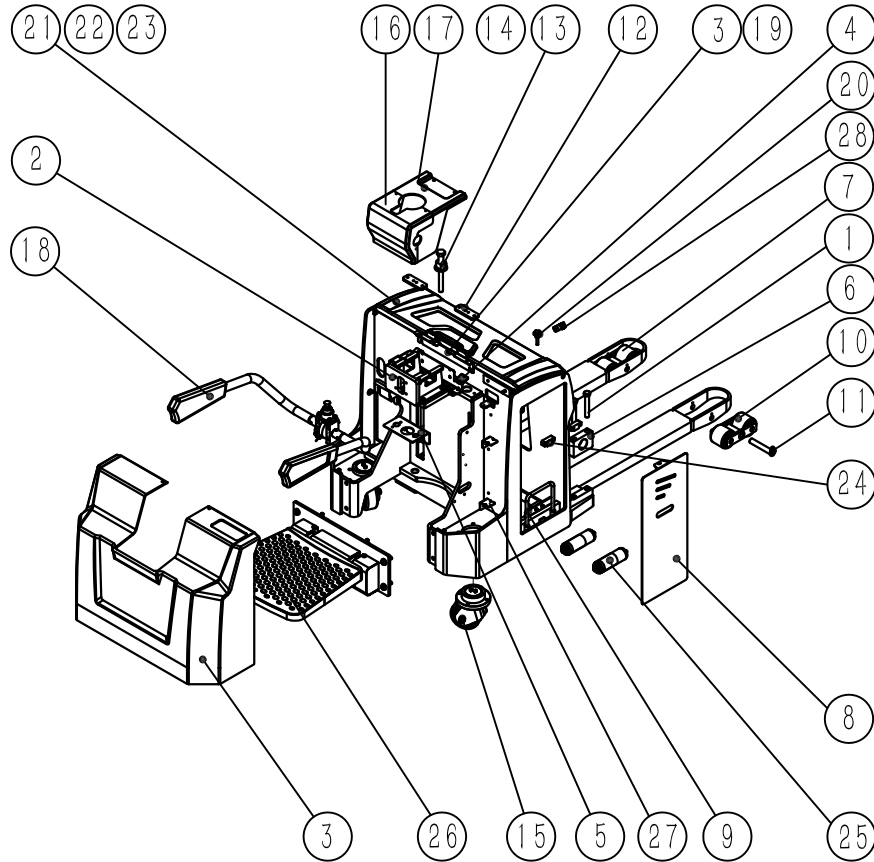
NO.	PARTS NO.	NAME	APPLICABLE MODEL	PAGE
Driving system				
Fig.4-1	MB15.4	Driving system		4-1
Fig.4-2	DZX24110.4	Steering feedback system components		4-2
Fig.4-3	BQD1503	Drive unit		4-3
Fig.4-(4~5)	BQD1502.1	Drive box assembly		4-(4~5)
Steering system				
Fig.5-1	TEP25.5	Steering system		5-1
Fig.5-2	TEP25.5.1	Steering parts		5-2
Electrical System				
Fig.6-1	MB15.7.10	Electrical schematic		6-1

Fig.0-1 Pallet stacker MB series



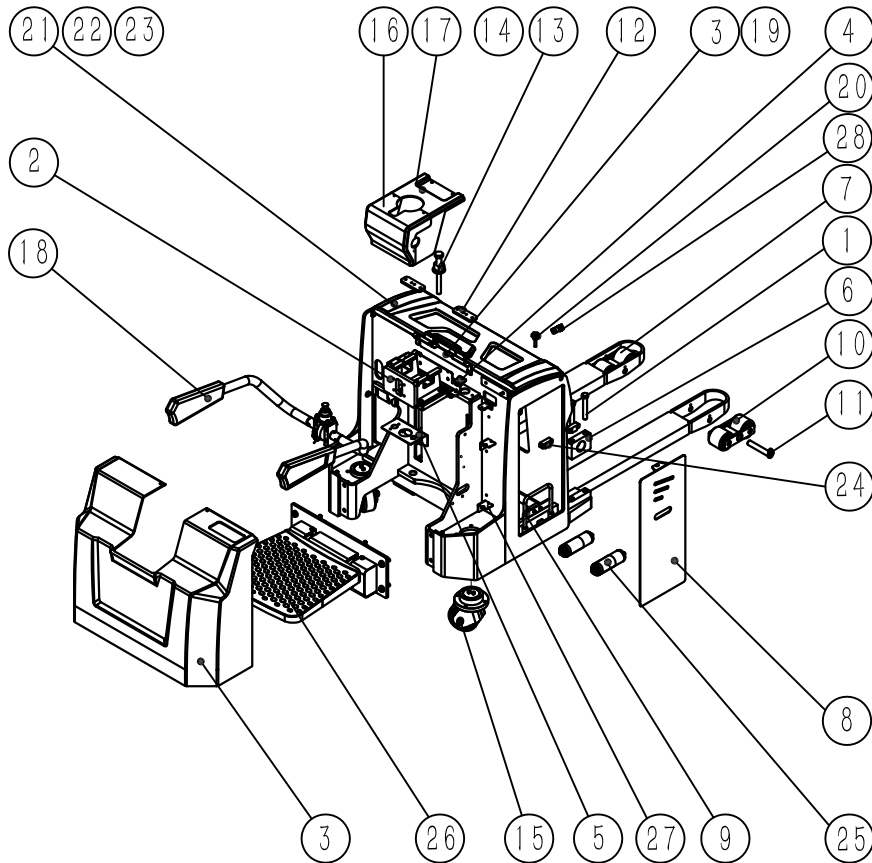
NO.	PARTS NO.	NAME	QTY.	REMARKS
1	MB15.1	Vehicle system	1	MB/MBF01 single/ duplex mast
1	MB15.1S	Vehicle system	1	MB triplex mast
2	MB1016.2F01	Lifting system	1	MBF01 1ton 1.6m single mast
2	MB1516.2F01	Lifting system	1	MBF01 1.5ton 1.6m single mast
2	MB15.2F01	Lifting system	1	MBF01 1.5ton duplex mast
2	MB2016.2F01	Lifting system	1	MBF01 2ton 1.6m single mast
2	MB20.2F01	Lifting system	1	MBF01 2ton single mast
2	MB1525.2	Lifting system	1	MB 1.5ton 2.5m duplex mast
2	MB1530.2	Lifting system	1	MB 1.5ton 3m duplex mast
2	MB15.2	Lifting system	1	MB 1.5ton duplex mast
2	MB20.2	Lifting system	1	MB 2ton duplex mast
2	MB1045.2S	Lifting system	1	MB 1ton 4.5m triplex mast
2	MB1545.2S	Lifting system	1	MB 1.5ton 4.5m triplex mast
2	MB20.2S	Lifting system	1	MB 2ton triplex mast
3		Hydraulic system	1	MBF01 single/ duplex mast
3		Hydraulic system	1	MB duplex/trplex mast
4	MB15.4	Driving system	1	
5	TEP25.5	Steering system	1	
6		Electrical system	1	

Fig.1-1 Vehicle system



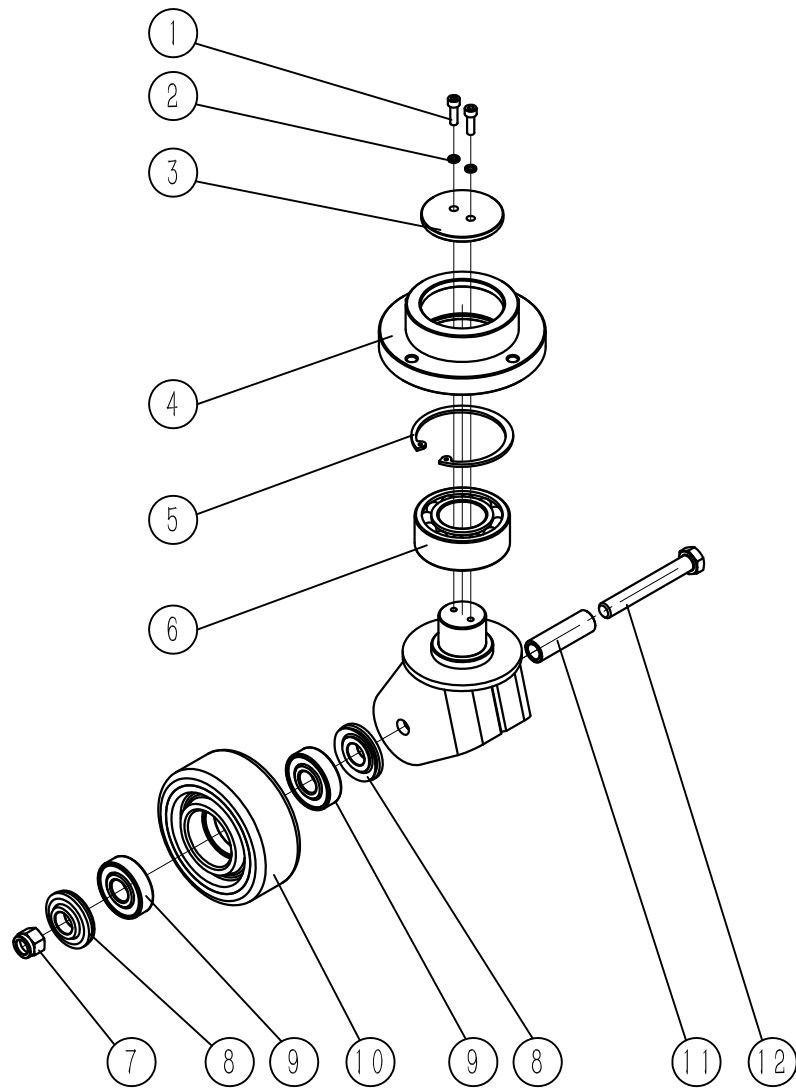
NO.	PARTS NO.	NAME	QTY.	REMARKS
1	MB15.1.1	Vehicle welding	1	MB/MBF01 single/ duplex mast
1	MB15.1.1S	Vehicle welding	1	MB triplex mast
2	MB15.1.2	Steering support	1	
3	MB15.1.5	Wire harness fixing plate	1	
4	MB15.1.6	Cover plate	1	
5	MB15.1.7	Dashboard	1	
6	MB15.1.8	Mounting seat	2	
7	GB5782 M16×110	Hexagon head bolts	4	
8	MB15.1.10	Side door welding	1	
9	MB15.1.12	Battery plug assembly	1	
10	TB2025.1.13	Front wheel assembly	2	
11	TB2025.1.14	Front wheel fixed shaft welding	2	
12	TE30.1.3F09	Driving frame pressure plate	2	
13	TE30.1.4F09	Adjusting bearer	1	
14	TE30.1.5F09	Adjusting bolt	1	
15	TEP25.1.2.8	Caster assembly	2	
16	TEP25.1.11	Rear cover	1	
17	TEP25.1.12	Upper cover	1	
18	BHB01	Arm assembly	1	
19	LP-133	M6 reed nuts	2	
20	JB7274 M8×40B	Star handle	1	
21	MB15.1.3	Battery cover	1	
22	GT091206	Sleeves	2	
23	TEP25.2.12.2	Magnet	3	

Fig.1-2 Vehicle system



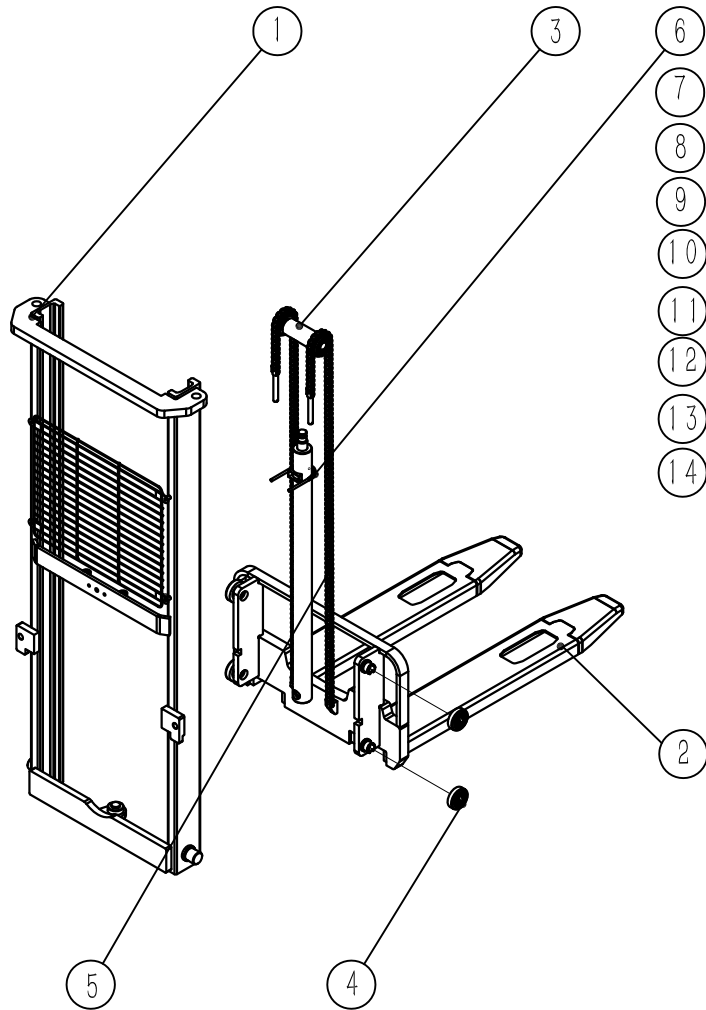
NO.	PARTS NO.	NAME	QTY.	REMARKS
24	BSB01.02	Cushion	2	
25	1.200.JHA.ACB-155W	Roller	4	
26	MB15.1.11	Plate assembly	1	
27	MB15.1.14	Wire harness fixing plate	2	
28	MB15.3.1	Pipe clamp	1	

Fig.1-3 TEP25.1.2.8 Caster assembly



NO.	PARTS NO.	NAME	QTY.	REMARKS
1	GB70.1 M6×20	Hexagon socket head cap screws	2	
2	GB93 6	Spring washers	2	
3	TEP25.1.2.8.6	Caster plate	1	
4	TEP25.1.2.8.2	Balance wheel bearing seat	1	
5	GB893.1 80	Hole with elastic ring	1	
6	GB296 3208A	Double row angular contact ball bearings	1	
7	GB889.1 M14	Type I nonmetallic inserts hex locking nut	1	
8	TEP25.1.2.8.4.1	Balance wheel rubber cover	2	
9	GB276 6304-2Z	Deep groove ball bearings	2	
10	BCL125×50A.2	Bearing tire	1	
11	TEP25.1.2.8.5	Balance wheel axle	1	
12	GB5780 M14×100	Hexagon head bolts	1	

Fig.2-1 Lifting system

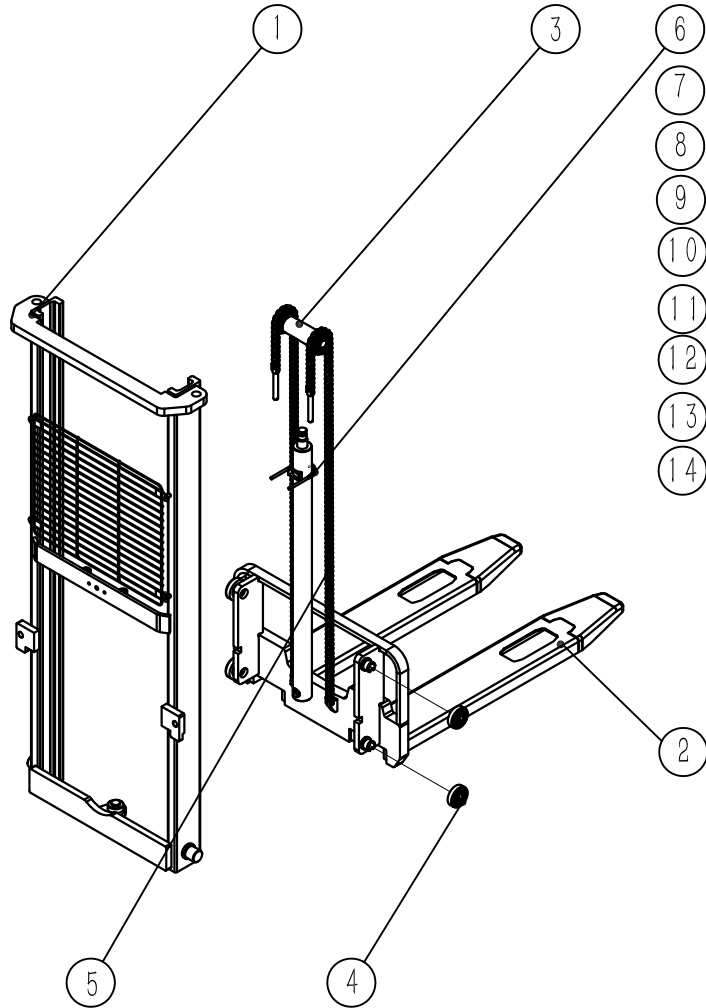


Applicable to MBF01 model with single mast

NO.	PARTS NO.	NAME	QTY.	REMARKS
1	MB1016.2.1F01	Outer mast welding	1	MBF01 1ton 1.6m single mast
1	MB1516.2.1F01	Outer mast welding	1	MBF01 1ton 1.6m single mast
1	MB15.2.1F01	Outer mast welding	1	MBF01 1.5ton single mast
1	MB2016.2.1F01	Outer mast welding	1	MBF01 2ton 1.6m single mast
2	MB1016.2.3F01	Fork frame welding	1	MBF01 1ton single mast
2	MB1516.2.3F01	Fork frame welding	1	MBF01 1.5ton single mast
2	MB2016.2.3F01	Fork frame welding	1	MBF01 2ton single mast
3	TB1016.2.2	Sprocket components	1	MBF01 1ton 1.6m single mast
3	TB1516.2.2	Sprocket components	1	MBF01 1.5ton 1.6m single mast
3	TB2016.2.2	Sprocket components	1	MBF01 2ton 1.6m single mast
4	NL078.3.00R1-00.1	Composite roller body	4	
5	12A-1-51	Lifting chain	2	MB 1ton 1.6m single mast
5	16A-1-51	Lifting chain	2	MB 1.5ton/2ton 1.6m single mast
6	UM08-62-105-30B	U-bolts	1	MBF01 1ton single mast
6	UM08-67-105-30B	U-bolts	1	MBF01 1.5ton single mast
6	UM08-78-110-30B	U-bolts	1	MBF01 2ton single mast
7	TB1025.2.4	Adjusting block	1	MBF01 1ton single mast
7	TB1525.2.4	Adjusting block	1	MBF01 1.5ton single mast
7	TB2025.2.4	Adjusting block	1	MBF01 2ton single mast
8	TB1025.2.7	Adjusting sleeve	1	MBF01 1ton single mast
8	TB1525.2.7	Adjusting sleeve	1	MBF01 1.5ton single mast
8	TB2025.2.7	Adjusting sleeve	1	MBF01 2ton single mast
9	TB2025.2.5	Rubber sleeve	1	
10	GB5782 M16×70	Hexagon head bolts	1	

Fig.2-2 Lifting system

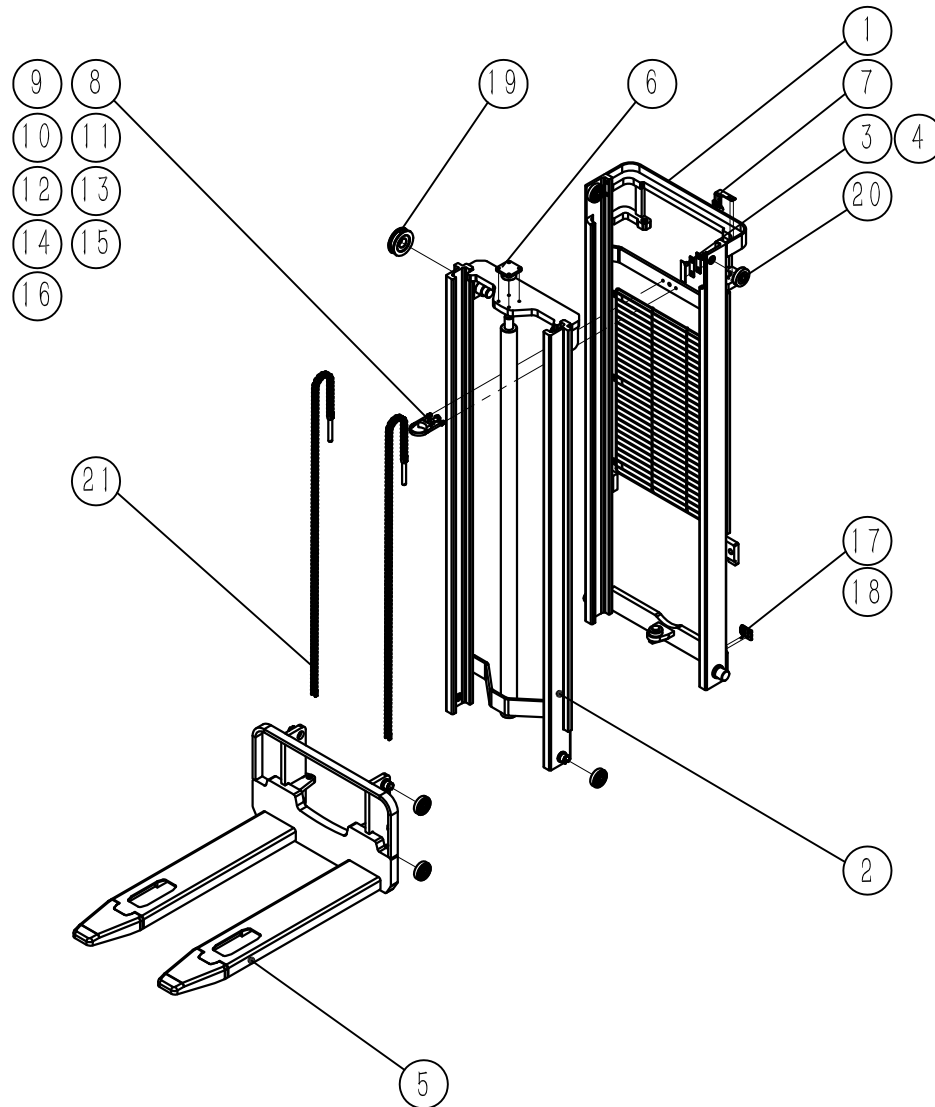
Applicable to MBF01 model with single mast



NO.	PARTS NO.	NAME	QTY.	REMARKS
11	GB6170 M16	Type I Hex Nuts	1	
12	GB97.1 8	Flat washers	2	
13	GB6170 M8	Type I Hex Nuts	2	
14	GB923 M8	Cover nuts	2	

Fig.2-3 Lifting system

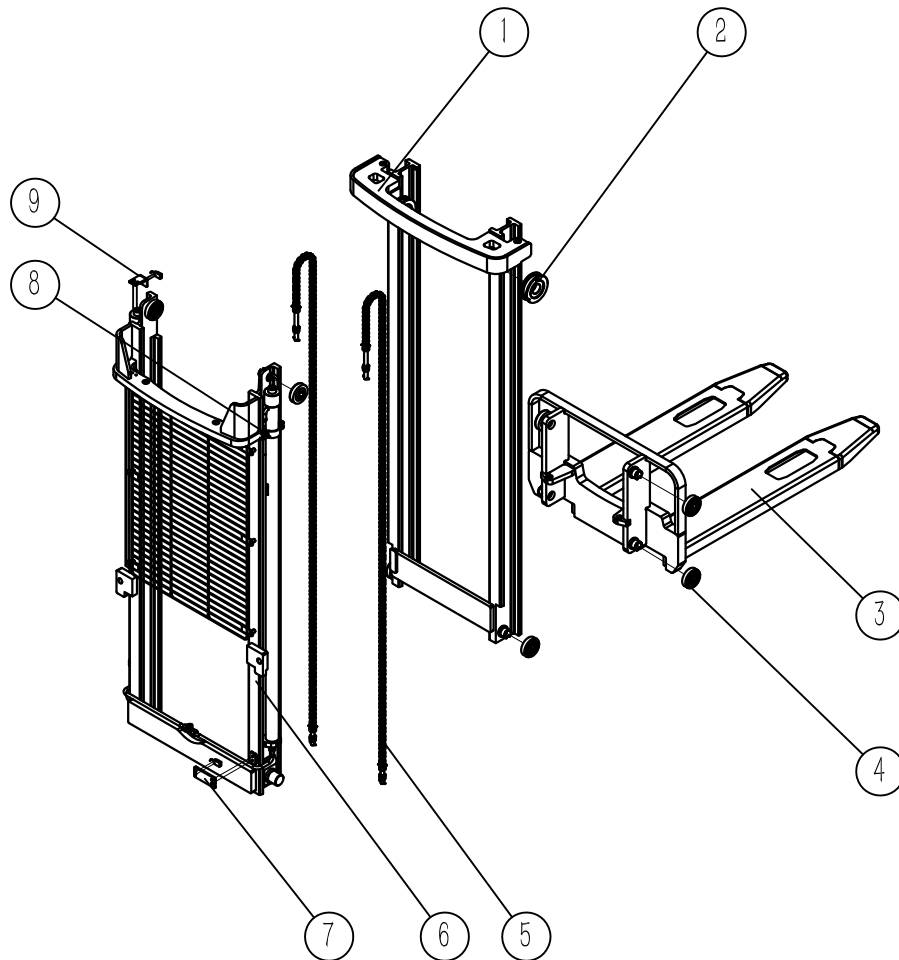
Applicable to MBF01 model with duplex mast



NO.	PARTS NO.	NAME	QTY.	REMARKS
1	MB15.2.1F01	Outer mast welding	1	MBF01 1.5ton 3.5m duplex mast
1	MB20.2.1F01	Outer mast welding	1	MBF01 2ton 3.5m duplex mast
2	MB15.2.2F01	Inner mast welding	1	MBF01 1.5ton/2ton 3.5m duplex mast
3	TB2025.2.1.3	Limit slider	2	
4	TB2025.2.1.4	Adjusting washer	4	
5	MB15.2.3F01	Fork frame welding	1	MBF01 1.5ton duplex mast
5	MB20.2.3F01	Fork frame welding	1	MBF01 2ton duplex mast
6	MB15.2.6F01	Cylinder holder welding	1	MBF01 1ton/1.5ton duplex mast
6	MB20.2.6F01	Cylinder holder welding	1	MBF01 2ton duplex mast
7	MB15.2.4F01	Sensor mounting plate	1	
8	UM08-62-105-30B	U-bolts	1	MBF01 1ton duplex mast
8	UM08-67-105-30B	U-bolts	1	MBF01 1.5ton duplex mast
8	UM08-78-110-30B	U-bolts	1	MBF01 2ton duplex mast
9	TB1025.2.4	Adjusting block	1	MBF01 1ton duplex mast
9	TB1525.2.4	Adjusting block	1	MBF01 1.5ton duplex mast
9	TB2025.2.4	Adjusting block	1	MBF01 2ton duplex mast
10	TB1025.2.7	Adjusting sleeve	1	MBF01 1ton duplex mast
10	TB1525.2.7	Adjusting sleeve	1	MBF01 1.5ton duplex mast
10	TB2025.2.7	Adjusting sleeve	1	MBF01 2ton duplex mast
11	TB2025.2.5	Rubber sleeve	1	
12	GB5782 M16×70	Hexagon head bolts	1	
13	GB6170 M16	Type I hex nuts	1	
14	GB97.1 8	Flat washers	2	
15	GB6170 M8	Type I hex nuts	2	

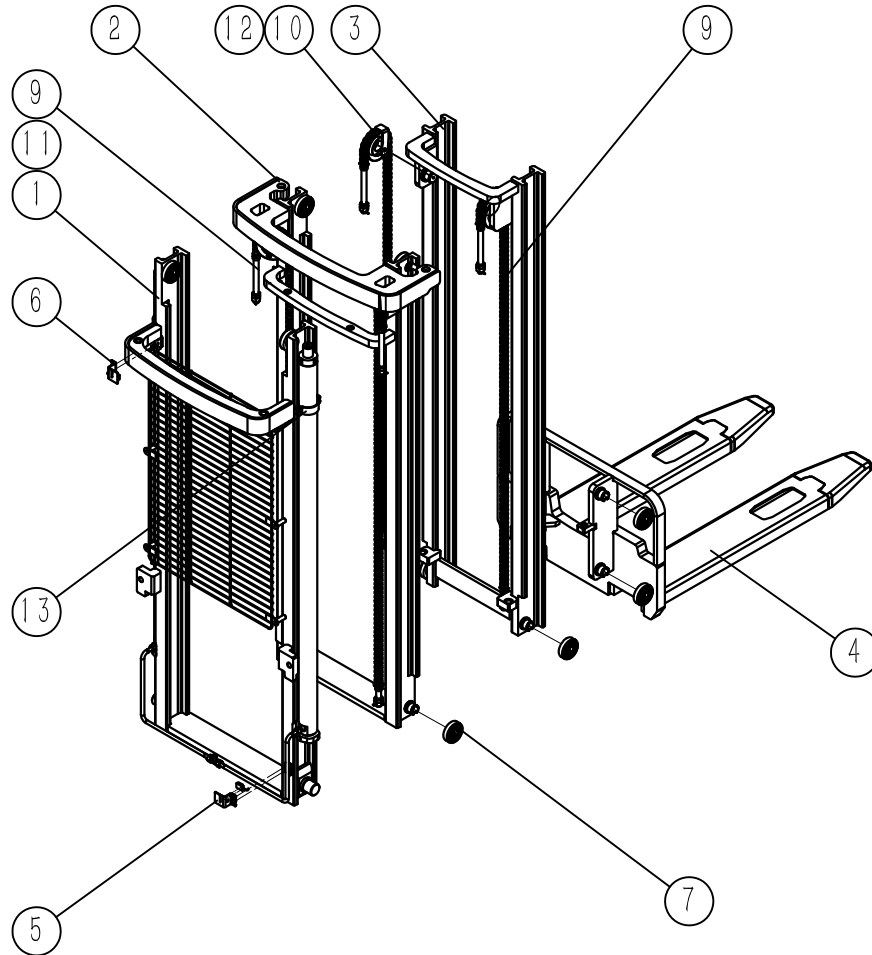
Fig.2-5 Lifting system

Applicable to forklift of duplex mast



NO.	PARTS NO.	NAME	QTY.	REMARKS
1	MB1525.2.2	Inner mast frame welding	1	MB1.5T forklift in duplex mast H=2500
1	MB1530.2.2	Inner mast frame welding	1	MB1.5T forklift in duplex mast H=3000
1	MB15.2.2	Inner mast frame welding	1	MB1.5T forklift in duplex mast H=3500-4500
1	MB20.2.2	Inner mast frame welding	1	MB2T forklift in duplex mast H=3500-4500
2	780708K1	chain wheel	2	
3	MB15.2.3	fork welding	1	MB1.5T forklift in duplex mast
3	MB20.2.3	fork welding	1	MB2T forklift in duplex mast
4	NL078.3.00.1	Composite roller	8	
5	LH1223	Lifting chain group	1	MB1.5T forklift in duplex mast
5	LH1234	Lifting chain group	1	MB2T forklift in duplex mast
6	MB1525.2.1	Outer mast frame welding	1	MB1.5T forklift in duplex mast H=2500
6	MB1530.2.1	Outer mast frame welding	1	MB1.5T forklift in duplex mast H=3000
6	MB15.2.1	Outer mast frame welding	1	MB1.5T forklift in duplex mast
6	MB20.2.1	Outer mast frame welding	1	MB2T forklift in duplex mast
7	MB15.2.5	Lower sensor mounting plate	1	
8	MB15.2.4	Oil tank clamp	2	MB1.5T forklift in duplex mast
8	MB20.2.4	Oil tank clamp	2	MB2T forklift in duplex mast
9	MB15.2.6	Upper sensor mounting plate	1	

Fig. 2-6 Lifting system



Applicable to forklift of triplex mast

NO.	PARTS NO.	NAME	QTY.	REMARKS
1	MB10.2.1S	outer mast frame welding	1	MB1ton triplex mast
1	MB15.2.1S	outer mast frame welding	1	MB1.5ton triplex mast
1	MB20.2.1S	outer mast frame welding	1	MB2ton triplex mast
2	MB15.2.2S	middle mast frame welding	1	MB1/1.5ton triplex mast
2	MB20.2.2S	middle mast frame welding	1	MB2ton triplex mast
3	MB15.2.3S	inner mast frame welding	1	MB1.5ton triplex mast
3	MB20.2.3S	inner mast frame welding	1	MB2ton triplex mast
4	MB15.2.4S	fork welding	1	MB1.5ton triplex mast
4	MB20.2.4S	fork welding	1	MB2ton triplex mast
5	MB15.2.5S	fixed plate of proximity switch	1	
6	MB15.2.6S	fixed plate of proximity switch	2	1
7	NL078.3.00R1-00.1	composite roller	12	
8	LH1234	lifting chain group	2	MB1.5ton triplex mast
9	LH1234	lifting chain group	2	MB1.5ton triplex mast
9	LH1244	lifting chain group	2	MB2ton triplex mast
10	780708K	chain wheel	4	
11	MB15.2.8S	baffle of the chain wheel	2	
12	MB15.2.9S	baffle of the chain wheel	2	2
13	MB15.2.7S	oil tank clamp	2	

Fig.3-1 Hydraulic System

Applicable to MBF01 single/duplex mast forklift

NO.	PARTS NO.	NAME	QTY.	REMARKS
1	E1208-60211	shut-off valve	1	
2		hydraulic hose assembly	1	
3	GJT204L	right angle fittings	1	
4	BBZ24V2.0-L10W	pump station assembly	1	
5	LM3550-MB	lifting cylinder	1	MBF01 1ton single/duplex mast forklift
5	LM3556-MB	lifting cylinder	1	MBF01 1.5ton single/duplex mast forklift
5	LM4563-MB	lifting cylinder	1	MBF01 2ton single/duplex mast forklift

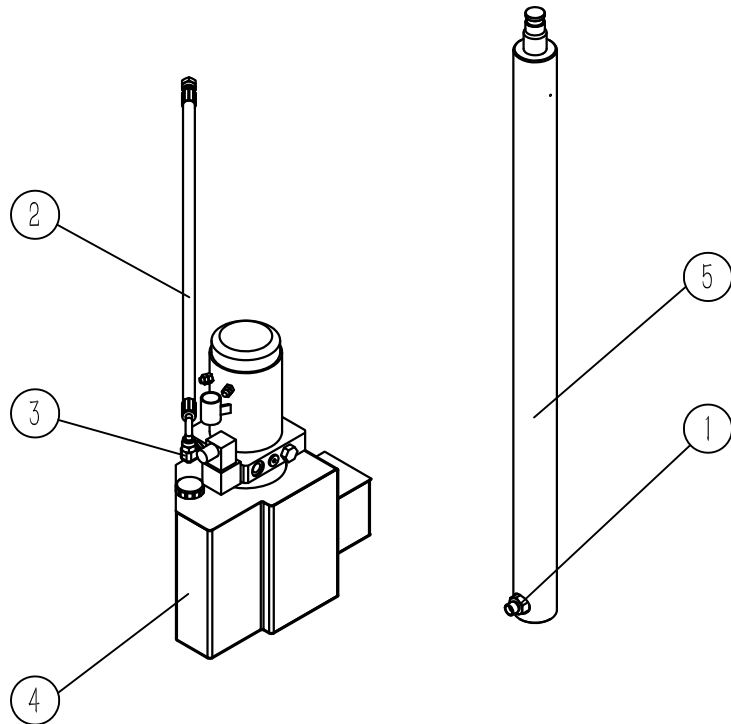
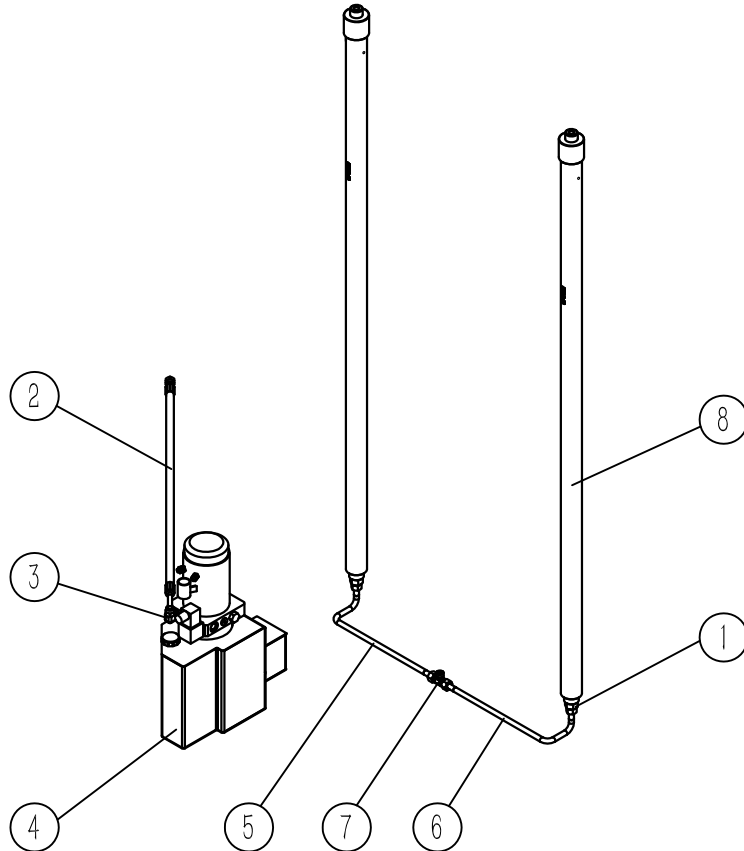


Fig.3-2 Hydraulic System

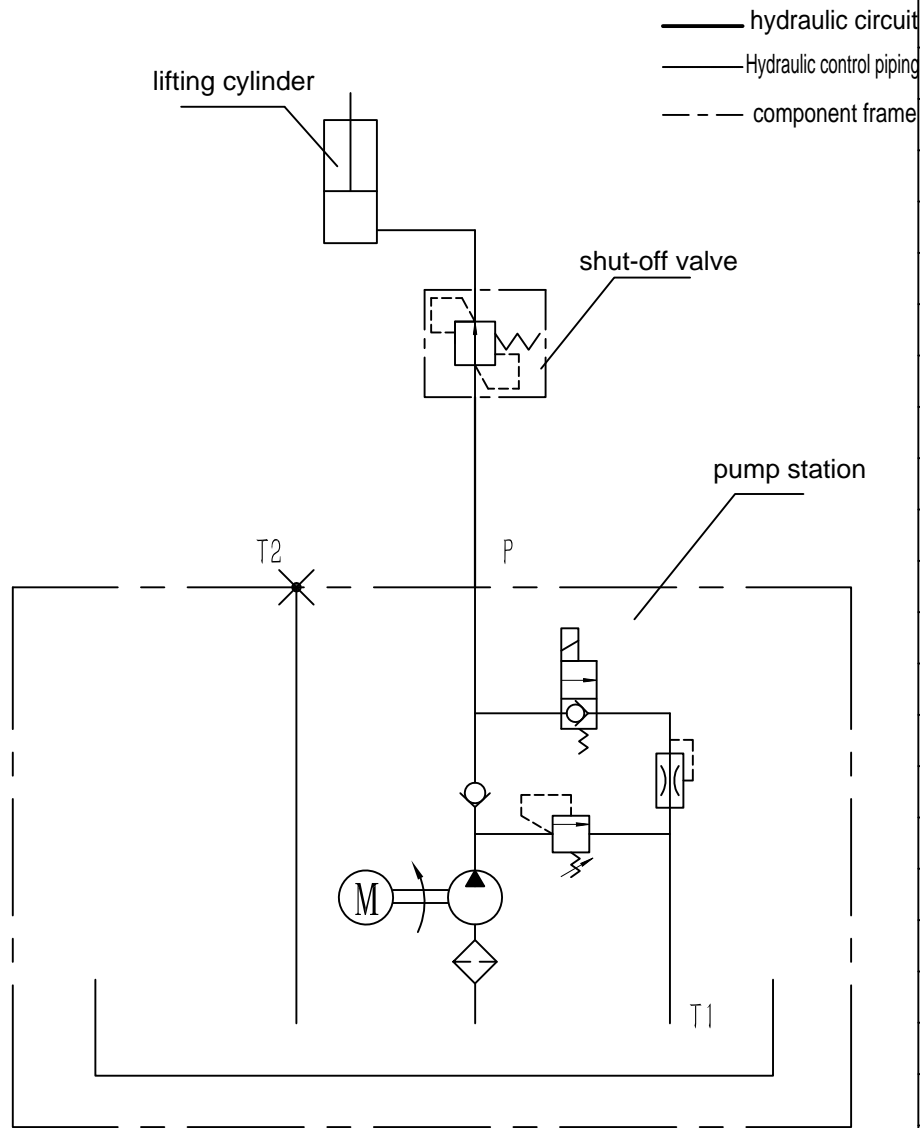
Applicable to MB single/triplex mast forklift



NO.	PARTS NO.	NAME	QTY.	REMARKS
1	BYT-QDF-3t-00	shut-off valve component	1	
2		hydraulic hose assembly	1	
3	GJT204L	right angle fittings	1	
4	BBZ24V2.0-L10W	pump station assembly	1	
5	MB15.3.11	connecting steel pipe 1	1	MB forklift in duplex mast
5	MB15.3.1S	left connection steel pipe	1	MB forklift in triplex mast
6	MB15.3.12	connecting steel pipe 2	1	MB forklift in duplex mast
6	MB15.3.2S	right connection steel pipe	1	MB forklift in triplex mast
7	SAC-18	tee fitting	1	
8	LM3040-MB	lifting cylinder	1	MB1ton forklift in duplex mast
8	LM3545-MB	lifting cylinder	1	MB2ton duplex/1ton triplex mast forklift
8	LM3550-MB	lifting cylinder	1	MB1.5/2ton triplex mast forklift

Fig.3-3 Hydraulic Schematic

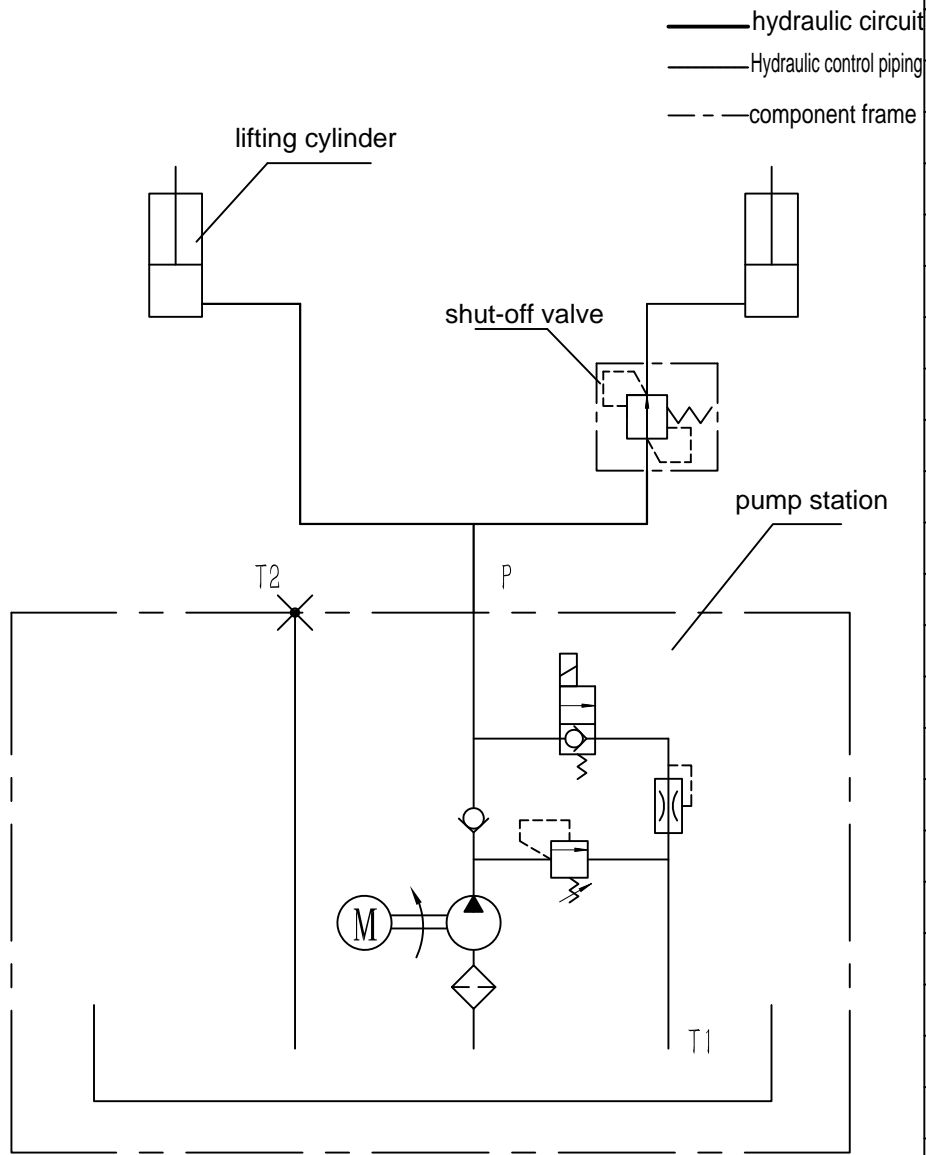
Applicable to MBF01 single/duplex mast forklift



NO.	PARTS NO.	NAME	QTY.	REMARKS
1				
2				
3				
4				
5				
6				
7				
8				
8				
9				
10				
11				
12				
13				
14				
15				
16				
17				
18				
19				
20				
21				
22				
23				

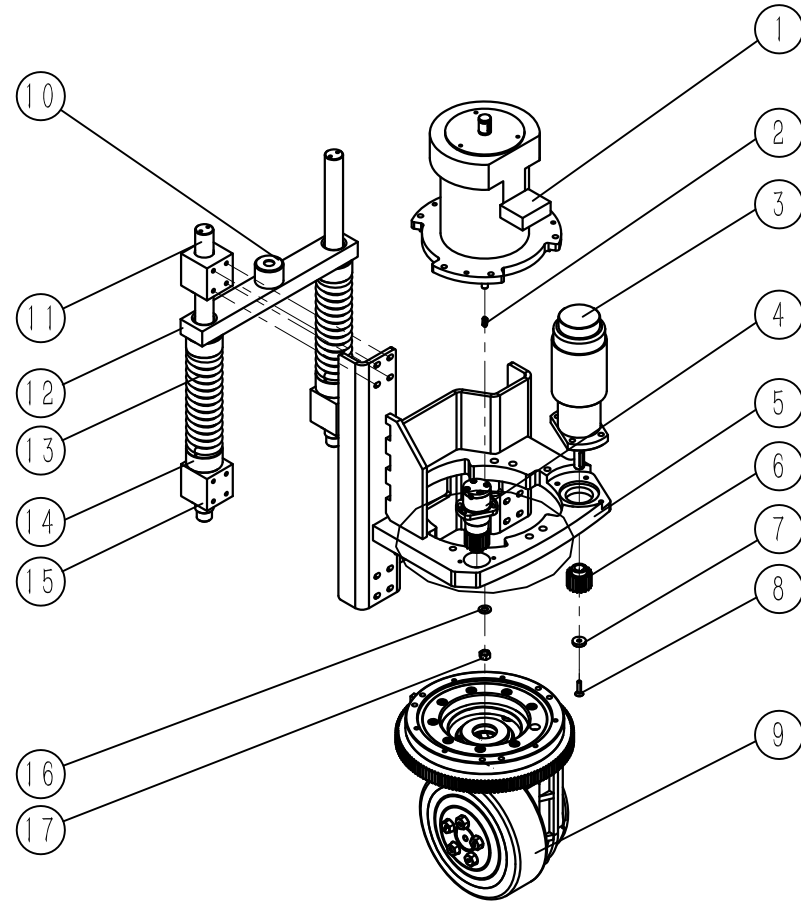
Fig.3-4 Hydraulic Schematic

Applicable to MB duplex/triplex mast forklift



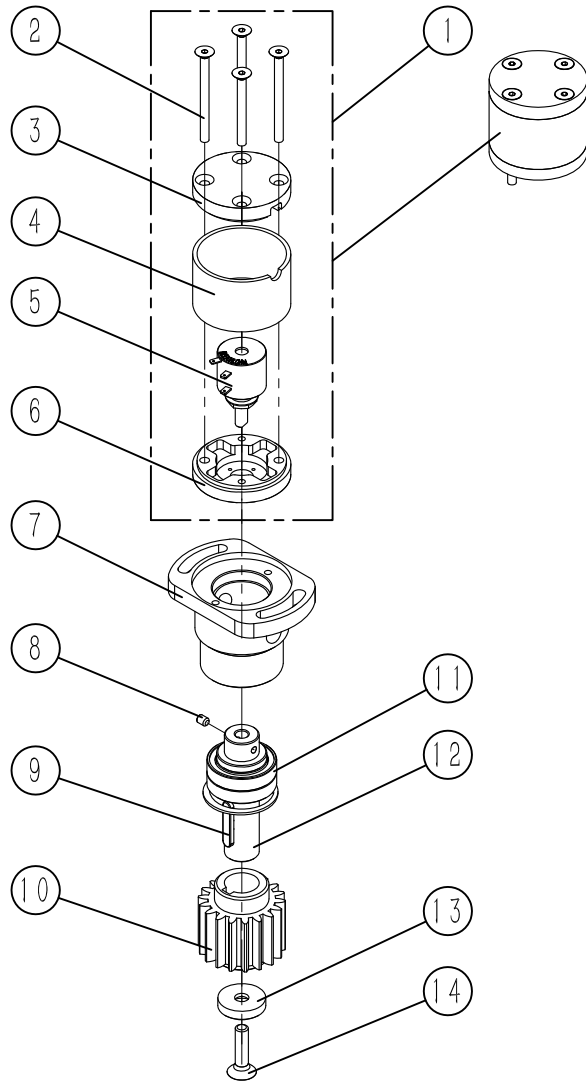
NO.	PARTS NO.	NAME	QTY.	REMARKS
1				
2				
3				
4				
5				
6				
7				
8				
8				
9				
10				
11				
12				
13				
14				
15				
16				
17				
18				
19				
20				
21				
22				
23				

Fig.4-1 MB15.4 Drive System



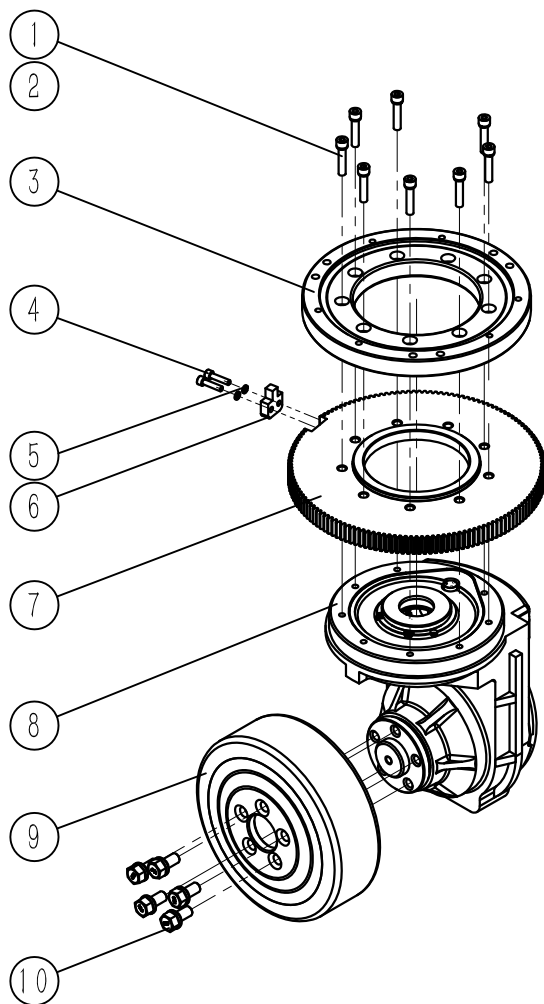
NO.	PARTS NO.	NAME	QTY.	REMARKS
1	XQJ1.5-BYT7	drive motor	1	
2	GB1096 6×6×18A	ordinary type flat key	1	
3	ZYT24165-G23.9	steering unit	1	
4	DZX24110.4	steering feedback system components	1	
5	MB15.4.1	drive bracket welding	1	
6	BDZ1.4.1	turning gear	1	
7	BDZ1.4.4	shaft end ring	1	
8	GB70.3 M6×25	hexagon countersunk head screws	1	
9	BQD1503	drive unit	1	
10	TE30.4.6F09	cushion block	1	
11	TE30.4.2F09	guide column	2	
12	TE30.4.4F09	pressure plate	1	
13	GB2089 YA10×50×220	cylindrical spiral compression spring	2	
14	TE30.4.5F09	nylon guide sleeve	4	
15	TE30.4.3F09	guide sleeve assembly	3	
16	GB97.1 10	flat cushion block	1	
17	GB6170 M10	hex nuts	1	

Fig.4-2 DZX241 10.4 Steering feedback system components



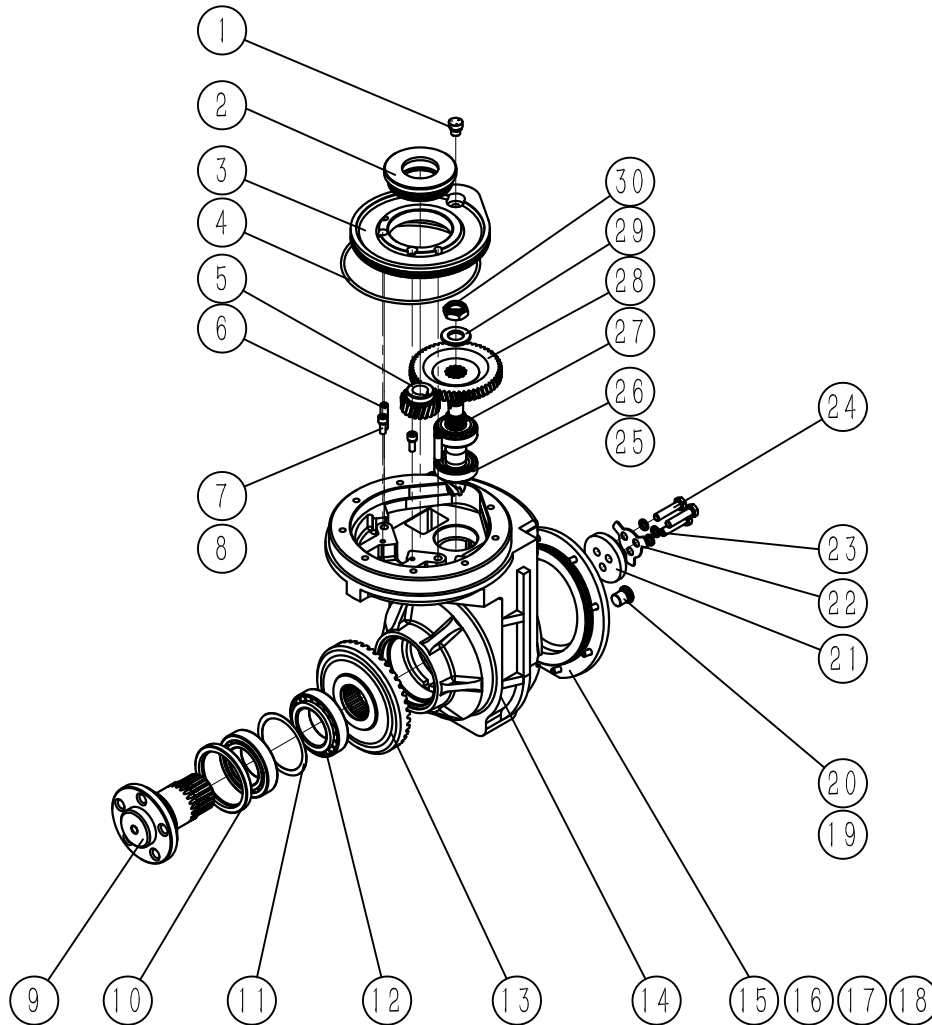
NO.	PARTS NO.	NAME	QTY.	REMARKS
1	DZX24110.4.4	potentiometer components	1	
2	GB70.3 M4×50	hexagon countersunk head screws	4	
3	DZX24110.2.4.3	upper board	1	
4	DZX24110.2.4.2	casing	1	
5	S22HP-6	multi-turn potentiometer	1	
6	DZX24110.2.4.1	lower board	1	
7	DZX24110.4.3	electrical position under the shell	1	
8	GB77 M4×5	hexagon socket set screws	1	
9	GB1096 5×5×25A	ordinary type flat key	1	
10	BDZ1.4.1	turning gear	1	
11	GB276 61804-2Z	deep groove ball bearings	1	
12	DZX24110.4.2	connection axle	1	
13	BDZ1.4.4	shaft end ring	1	
14	GB70.3 M6×25	hexagon countersunk head screws	1	

Fig.4-3 BQD1503 Driving Unit



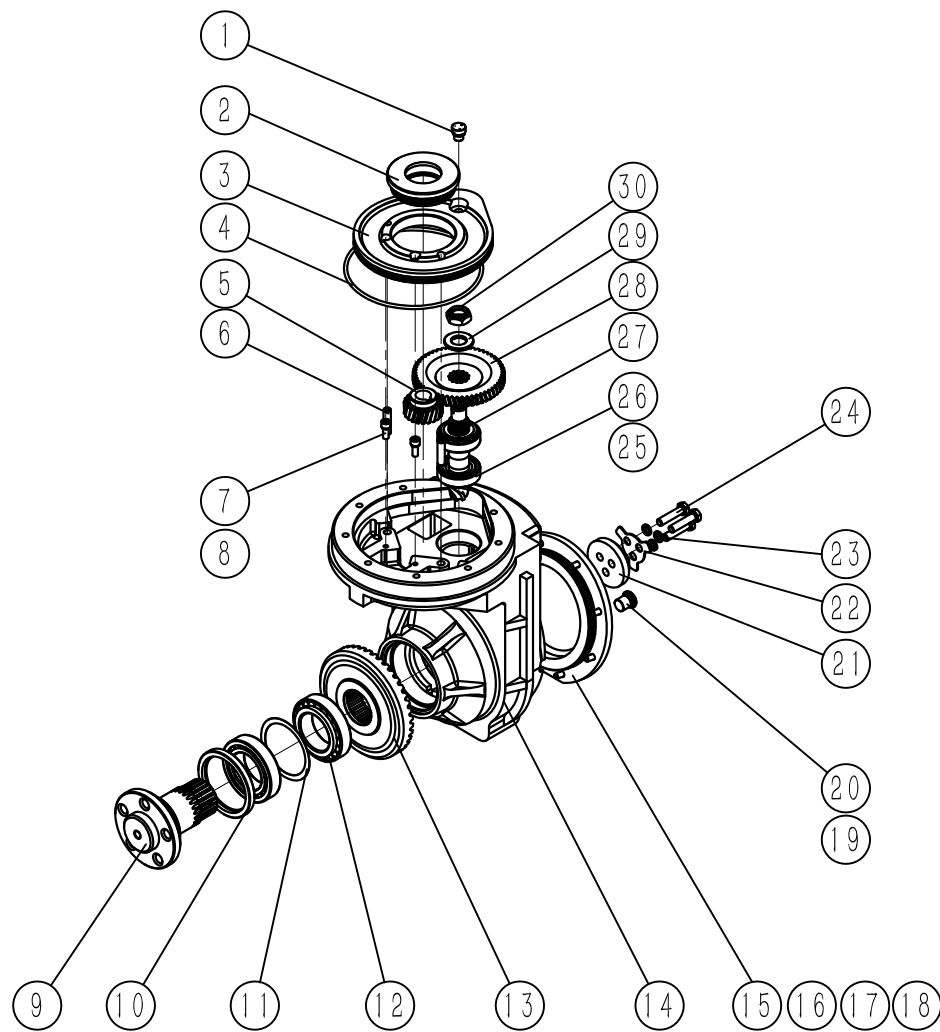
NO.	PARTS NO.	NAME	QTY.	REMARKS
1	GB70.1 M8 × 40	hexagon socket head cap screws	8	
2	GB93 8	spring washers	8	
3	BYT-002	rotary support	1	
4	GB70.1 M6 × 25	hexagon socket head cap screws	2	
5	GB93 6	spring washers	2	
6	BQD1503.2	limit block	1	
7	BQD1503.1	large turning ring gear	1	
8	BQD1502.1	drive box assembly	1	
9	BQL230 × 75	drive wheel	1	
10	BQD1502.4	drive wheel bolts	4	

Fig.4-4 BQD1502.1 Drive box assembly



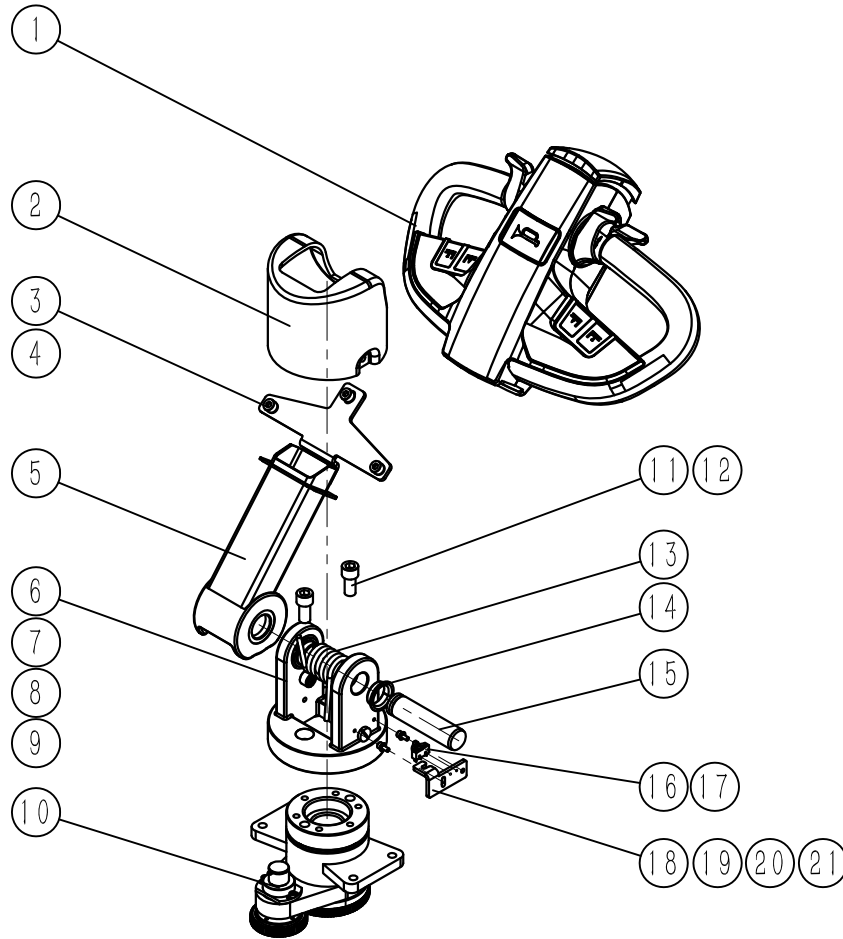
NO.	PARTS NO.	NAME	QTY.	REMARKS
1	BQD1502.1.17	ventilator plug assembly	1	
2	BQD1502.1.2	positioning seat assembly	1	
3	BQD1502.1.3	connection set	1	
4	GB3452.1 145×3.55	hydraulic pneumatic seals	1	
5	BQD1502.1.4	Input gear	1	
6	GB120.1 8×32	Internal thread cylindrical tip	2	
7	GB70.1 M6×16	hexagon socket head cap screws	2	
8	GB93 6	spring washers	2	
9	BQD1502.1.10	half axle	1	
10	TC484A 658008	Internal skeleton oil seal	1	
11	BQD1502.1.13	half axle adjust slice	1	
12	GB297 32009	tapered Roller Bearings	2	
13	BQD1502.1.9	passive helical gear	1	
14	BQD1502.1.1	gearbox	1	
15	BQD1502.1.14	bottom cover	1	
16	GB3452.1 128×3.55	hydraulic pneumatic seals	1	
17	GB70.1 M6×16	hexagon socket head cap screws	8	
18	GB93 6	spring washers	8	
19	BQD1502.1.15.1	plug screw	2	
20	BQD1502.1.15.2	copper cushion	2	
21	BQD1502.1.11	half axle ring	1	
22	BQD1502.1.12	semi-axle stop washer	1	
23	GB93 8	spring washers	3	
24	GB5782 M8×35	hexagon head bolts	3	

Fig.4-5 BQD1502.1 Drive box assembly



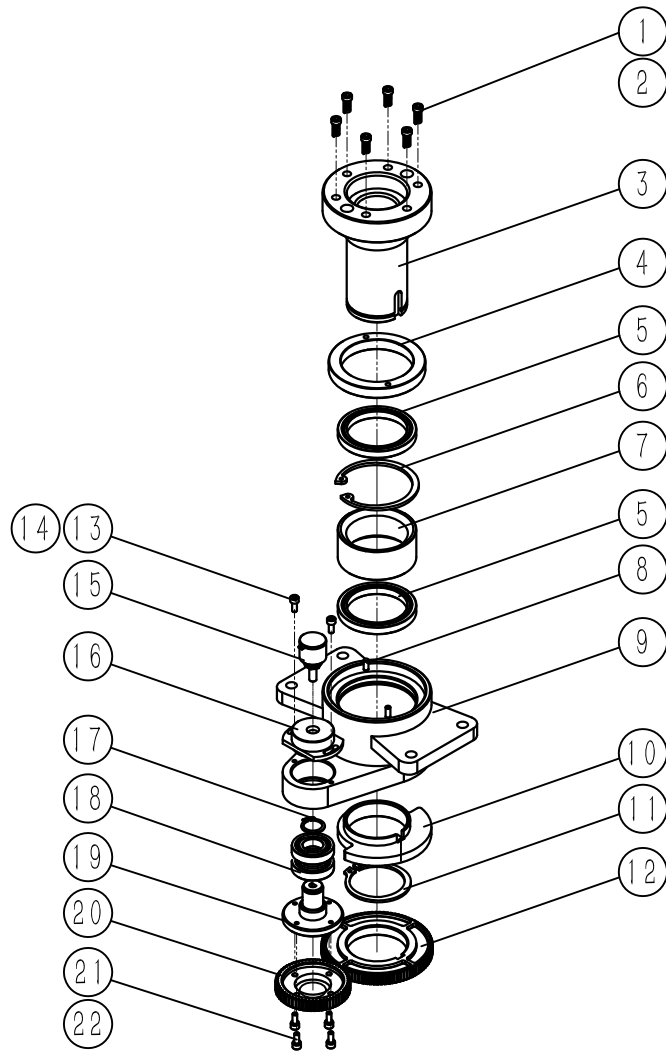
NO.	PARTS NO.	NAME	QTY.	REMARKS
25	LM72489-LM72810	tapered Roller Bearings	2	
26	BQD1502.1.8	bevel gear adjustment gasket	1	
27	BQD1502.1.7	spiral bevel gear	1	
28	BQD1502.1.5	passive gears	1	
29	BQD1502.1.6	passive gear washers	1	
30	BQD1502.1.16	fasten nuts	1	

Fig.5-1 TEP25.5 Steering System



NO.	PARTS NO.	NAME	QTY.	REMARKS
1	BSB10.07	handle assembly	1	
2	TEP25.5.8	handle shell	1	
3	GB70.1 M8×12	hexagon socket head cap screws	3	
4	GB93 8	spring washers	3	
5	TEP25.5.6	handle welding	1	
6	TEP25.5.10	handle base	1	
7	GB70.1 M6×16	hexagon socket head cap screws	1	
8	TEP25.5.9	Damping ring	1	
9	GB833 M6×16	slotted large stud screws	2	
10	TEP25.5.1	upper steering part	1	
11	GB70.1 M12×25	hexagon socket head cap screws	2	
12	GB93 12	spring washers	2	
13	TEP25.5.7	torsion spring	1	
14	HZF252810	sliding bearing	2	
15	TEP25.5.5	slightly axis	1	
16	SS-10GL2	micro Switch	1	
17	GB818 M2×10	cross recessed pan head screws	2	
18	TEP25.5.11	microswitch mounting plate	1	
19	GB70.1 M4×10	hexagon socket head cap screws	2	
20	GB93 4	spring washers	2	
21	GB97.1 4	flat washers	2	

Fig.5-2 TEP25.5.1 Upper Steering Part



NO.	PARTS NO.	NAME	QTY.	REMARKS
1	GB77 M8×5	hexagon socket set screws	6	
2	GB2089 YA1×5×15	cylindrical spiral compression spring	6	
3	TEP25.5.1.2	upper steering shaft welding	1	
4	TEP25.5.1.4	friction plate	1	
5	GB276 61810-2Z	deep groove ball bearings	2	
6	GB893.1 65	Hole elastic ring	1	
7	TEP25.5.1.9	retaining ring	1	
8	GB119.2 4×10	cylindrical tip	2	
9	TEP25.5.1.1	upper Steering Part	1	
10	DZX24110.2.3	limit block	1	
11	GB894.2 50	elastic ring for axis	1	
12	DZX24110.2.5	turning large gears	1	
13	GB70.1 M4×10	hexagon socket head cap screws	2	
14	GB97.1 4	flat washer	2	
15	WDH22L 0505 W360	digital potentiometer	1	
16	DZX24110.2.7	potentiometer mounting plate	1	
17	GB894.1 17	elastic ring for axis	1	
18	GB276 16003-2Z	deep groove ball bearings	2	
19	DZX24110.2.8	transition axis	1	
20	DZX24110.2.6	turning little gears	1	
21	GB70.1 M4×10	hexagon socket head cap screws	4	
22	GB93 4	Spring washers	4	

Fig.6-1 MB15.7.10 Electrical schematic

