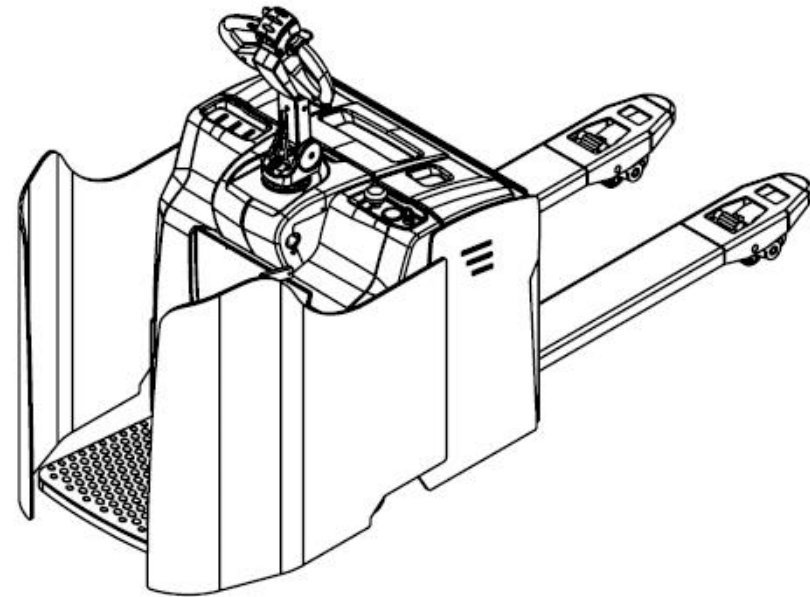




MATERIAL HANDLING EQUIPMENT DESIGNER & MANUFACTURER

# Parts List

## MEG20F202 Pallet Truck



Banyitong Science & Technology Developing Co.,Ltd

# Introduction

1. This parts catalogue is the parts catalogue of non-standard pallet trucks;
2. The parts change indicates the time, such as "-2008.8" that the parts used to August 2008, "2006.10-" that the parts from October 2006 to start;
3. When ordering parts, it is necessary to write down the model number of the forklift truck used, the factory number, the code number and name of the parts required and the quantity ordered;
4. When repairing and replacing parts, please use our parts to ensure the quality;
5. In order to improve the quality of products, the company will improve some parts, the improvement of the part in this catalogue can not be modified in time, such as wanting to know the details of the company's agents and distributors around the after-sales service to contact.

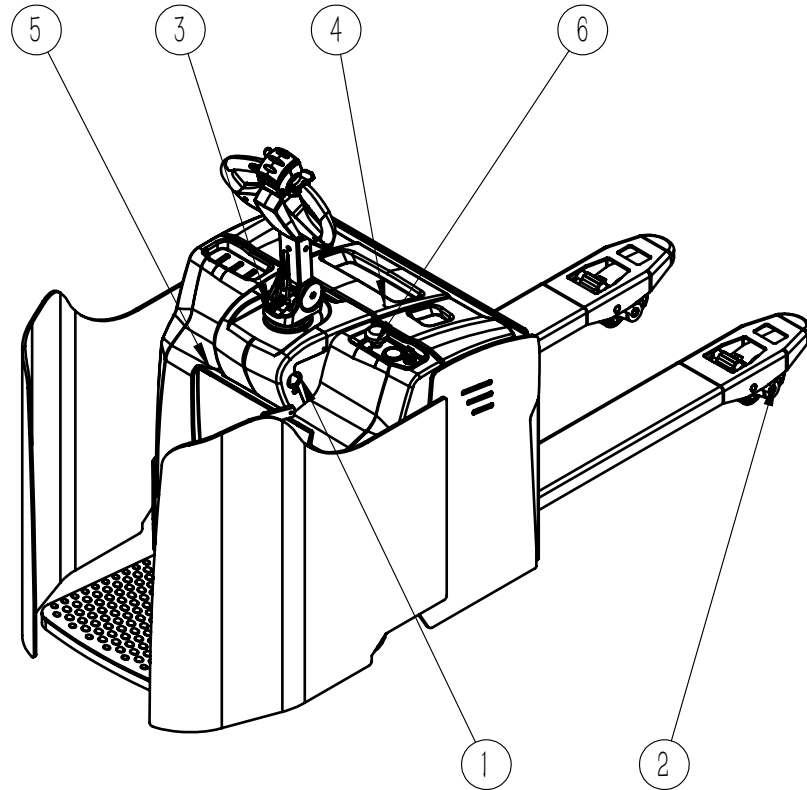
# CONTENT

No.	Code	Name	Suitable Model	Page
Part 1 Pallet Truck				
Fig 0-1	MEG20F202	Pallet Truck	MEG20F202	0-1
Part 1 Body Assembly				
Fig 1-1	1EG25-A0000F202	Body Component	MEG20F202	1-1
Fig 1-2	MEG30.1.10F201	Pedal Assembly	MEG20F202	1-2
Fig 1-3	E730-A5000	Universal Wheel Assembly	MEG20F202	1-3
Fig 1-4	1E730-A2000B-ZP	Steering Support Assembly	MEG20F202	1-4
Fig 1-5	TE30.1.3F09-ZP	Assembly of Pressure Plate on Drive Frame	MEG20F202	1-5
Fig 1-6	TKA15.3.9-ZP	Single Side Single Pipe Clamp Assembly	MEG20F202	1-6
Fig 1-7	1E730-H2000-ZP	Battery Cover Assembly	MEG20F202	1-7
Fig 1-8	MB15.1.20-ZP	Instrument Panel Assembly	MEG20F202	1-8
Part 3 Fork Carriage Component				
Fig 2-1	1E730-F0000AF04	Fork Carriage Component	MEG20F202	2-1
Fig 2-2	1E730-F3000	Lift Arm Assembly	MEG20F202	2-2
Fig 2-3	TE25.2.11	Front Wheel Assembly	MEG20F202	2-3
Part 4 Steering System				
Fig 3-1	MB15.5	Steering System	MEG20F202	3-1
Fig 3-2	BCZ31	Joystick Assembly	MEG20F202	3-2
Fig 3-3	DZX24111.2	Upper Steering Part	MEG20F202	3-3
Fig 3-4	MB20.5.2	Handle Joystick Assembly	MEG20F202	3-4

Part 5 Drive System				
Fig 4-1	MB15.4A	Drive System	MEG20F202	4-1
Fig 4-2	DZX24211.3	Lower Steering Part	MEG20F202	4-2
Fig 4-3	BQD23002-JD	Drive Unit	MEG20F202	4-3
Fig 4-4	TE30.4.3F09	Guide Set Assembly	MEG20F202	4-4
Part 6 Hydraulic Component				
Fig 5-1	1E730-K0000	Hydraulic Component	MEG20F202	5-1
Part 7 Electrical Component				
Fig 6-1	1EG25-N0000F202	Electrical Component	MEG20F202	6-1

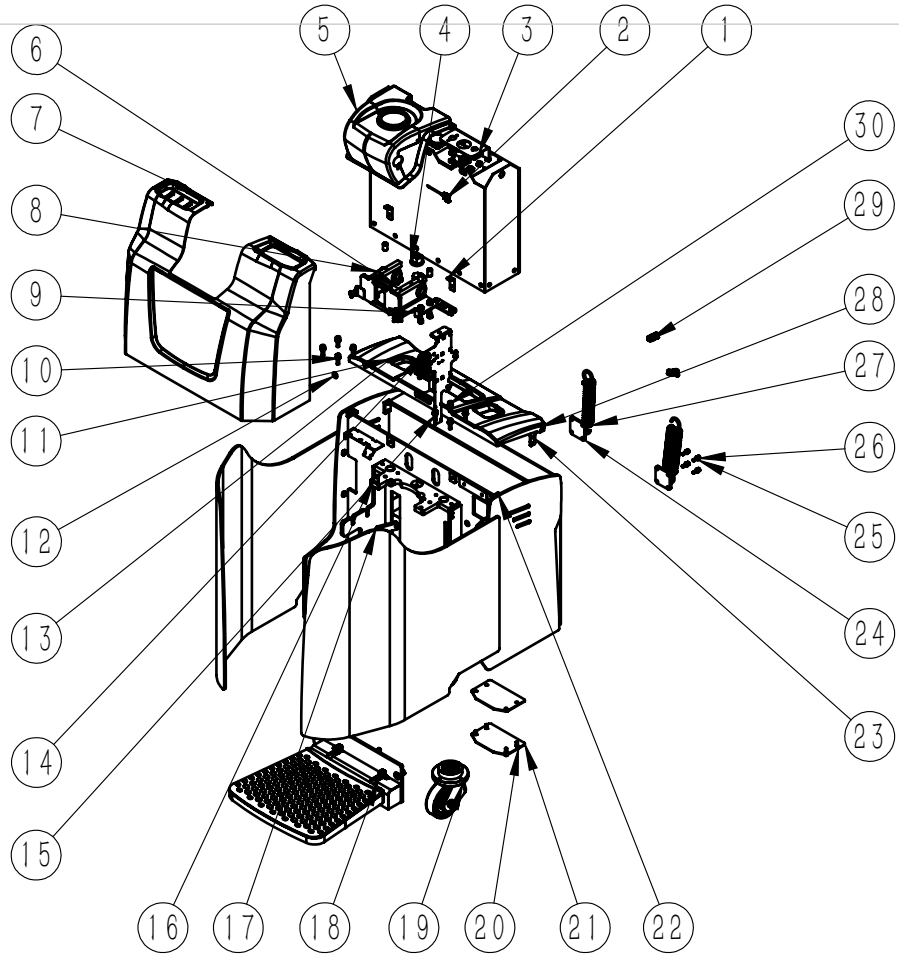
Fig 0-1 MEG20F202 Pallet Truck

MEG20F202 Series



No.	Code	Name	Qty.	Remark
1	1EG25-A0000F202	Body component	1	
2	1E730-F0000AF04	Fork carriage component	1	
3	MB15.5	Steering system	1	
4	MB15.4A	Drive system	1	
5	1E730-K0000	Hydraulic component	1	
6	1EG25-N0000F202	Electrical component	1	
7				
8				
9				
10				
11				
12				
13				
14				
15				
16				
17				
18				
19				
20				
21				
22				
23				
24				

Fig 1-1 11EG20-A0000F202 Body Component

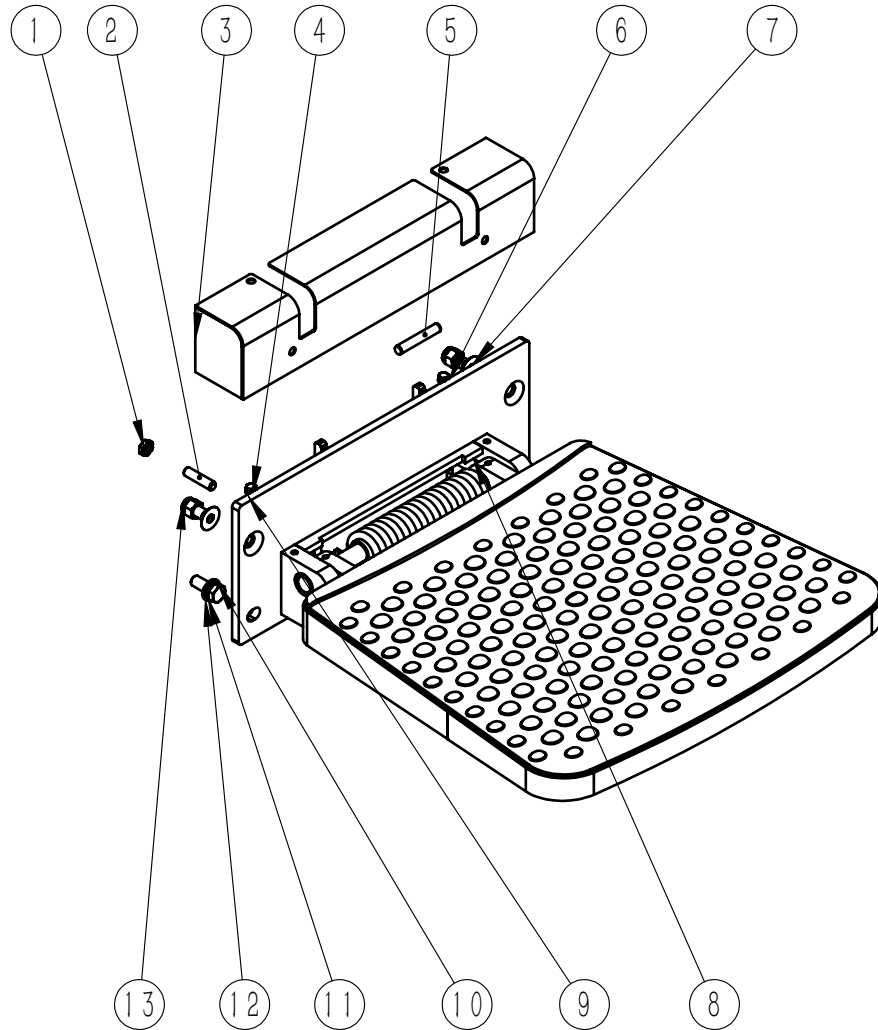


MEG20F202 Series

No.	Code	Name	Qty.	Remark
1	MB15.1.27	Cover mounting plate	2	
2	QDC24-202-ZZ05-Li	Lithium battery box	1	
3	MB15.1.20-ZP	Instrument panel assembly	1	
4	TE30.1.4F09	Adjustable seat	1	
5	MB15.1.23-ZP	Upper cover assembly	1	
6	1E730-A2000B-ZP	Steering support assembly	1	
7	MB15.1.22	Large cover	1	
8	TE30.1.3F09-ZP	Assembly of pressure plate on	2	
9	TE30.1.5F09	drive frame	1	
10	GB93 10	Adjustment bolt	8	
11	GB93 6	Spring washers	4	
12	GB97.1 12	Spring washers	1	
13	GB97.1 6	Flat washer	4	
14	MB15.1.30-ZP	Flat washer	1	
15	GB97.1 10	Repair board assembly	8	
16	GT111828	Flat washer	4	
17	1EG25-A1000F202	Spacer	1	
18	MEG30.1.10F201	Body welding	1	
19	1E730-A5000	Pedal assembly	2	
20	GB70.1 M8x25	Universal wheel assembly	12	
21	1E730-A0001	Hexagon socket head screw adjustment plate	4	
22	TEP25.2.12.2	magnet	2	
23	GB70.1 M6x12	Hexagon socket head	4	
24	1E730-A6000	screw mounting plate welding	2	
25	GB97.1 8	Flat washer	12	
26	GB93	Spring washers	12	
27	GB4142 A8x50x28	Cylindrical spiral tension spring	2	
28	0 1E730-H2000-ZP	Battery cover assembly	1	
29	TKA15.3.9-ZP	Unilateral single pipe clamp assembly	2	
30	30GB70.1 M10x35	Hexagon socket head screws	8	

Fig 1-2 MEG30.1.10F201 Pedal Assembly

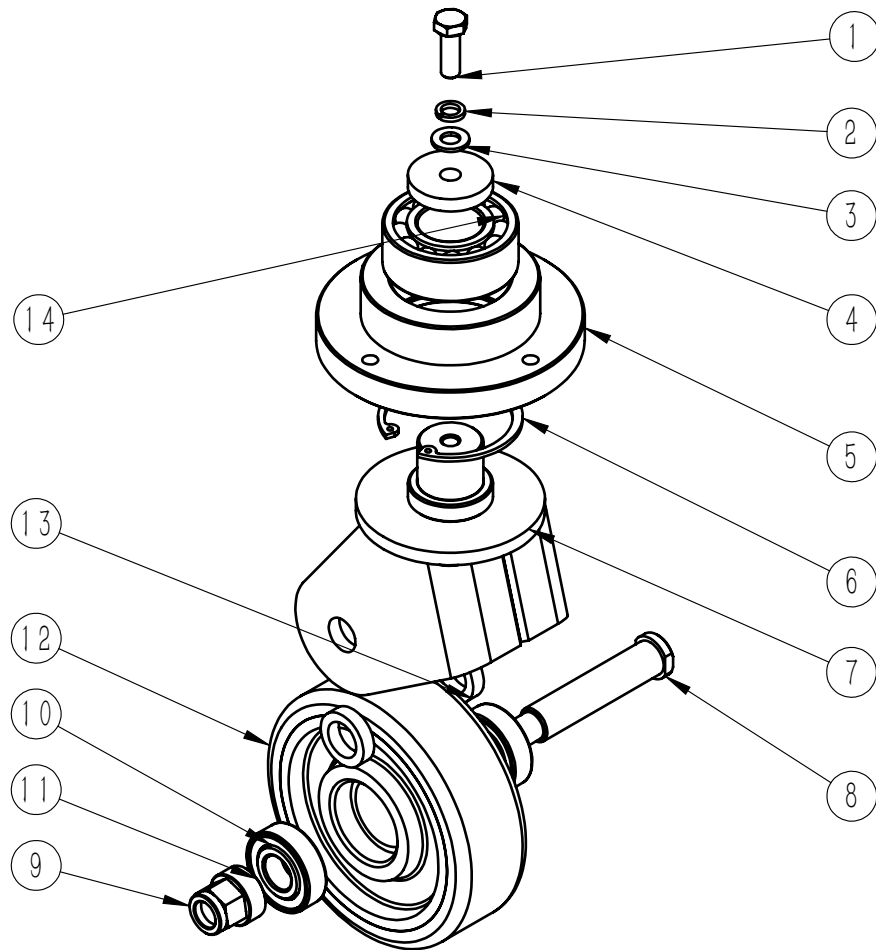
MEG20F202 Series



No.	Code	Name	Qty.	Remark
1	GB6172.1 M10	Hexagon thin nuts	1	
2	GB77 M10×40	Hexagon socket set screws with flat point	1	
3	TEP25.1.10.3	Pedal cover welding	1	
4	GB93 6	Spring washer	4	
5	GB119.2 10×60	Cylindrical pin	1	
6	GB97.1 6	Flat washer	4	
7	GB70.3 M12×3	Hexagon socket countersunk head screws	2	
8	5 TEP25.8.3	Pedal small assembly	1	
9	GB5783 M6×12	Hexagon head bolt	4	
10	GB5783 M12×3	Hexagon head bolt	2	
11	0 GB93 12	Spring washer	2	
12	GB97.1 12	Flat washer	2	
13	GB889.1 M12	Hexagon locknuts with non-metallic inserts type 1	2	
14				
15				
16				
17				
18				
19				
20				
21				
22				
23				
24				

Fig 1-3 1E730-A5000 Universal Wheel Assembly

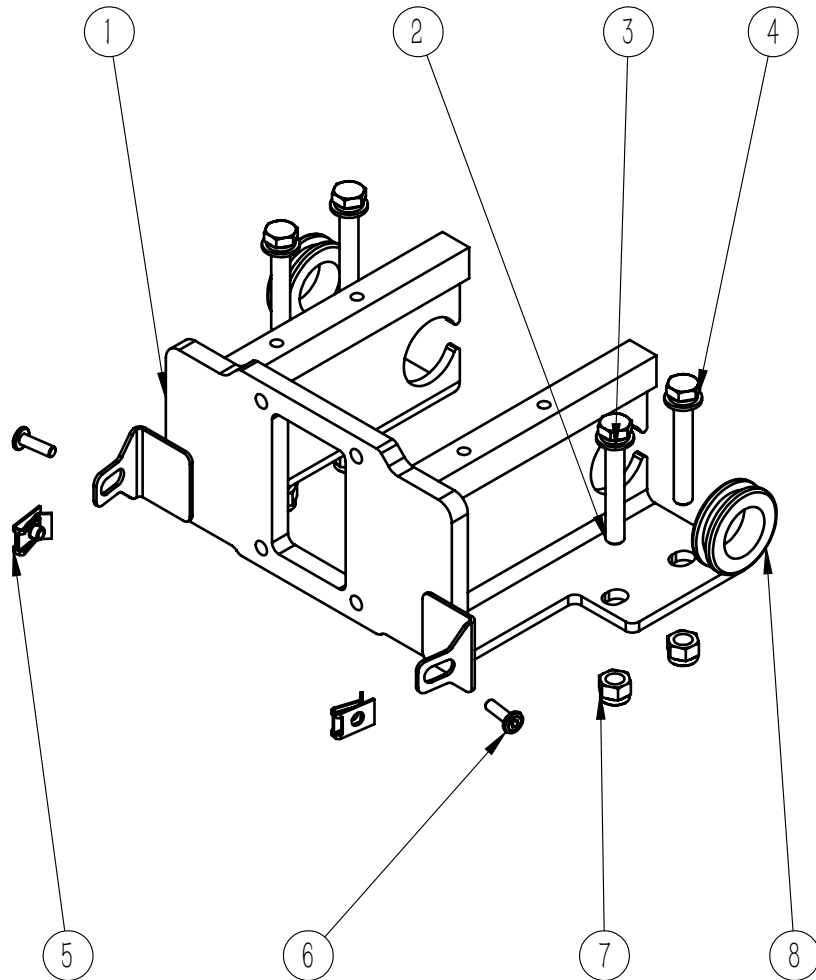
MEG20F202 Series



No.	Code	Name	Qty.	Remark
1	GB5783 M10x30	Hexagon head bolt	1	
2	GB93 10	Spring washer	1	
3	GB97.1 10	Flat washer	1	
4	TEP25.1.2.9.3	Universal wheel cover	1	
5	TEP25.1.2.9.2	Universal wheel bearing housing	1	
6	GB893.1 72	Elastic retaining ring for hole	1	
7	1FA715L-A7100	Universal wheel frame welding	1	
8	TB2025.1.5.3	Universal wheel axle	1	
9	GB889.1 M16	Type 1 non-metallic insert hexagonal locknut deep	1	
10	GB276 6204-2Z	Grooved ball bearings	2	
11	GT213012	Spacer	1	
12	BCL150x50	Load wheel	1	
13	GT213208	Spacer	2	
14	GB296 3207A-2RS	Double row angular contact ball bearings	1	
15				
16				
17				
18				
19				
20				
21				
22				
23				
24				

Fig 1-4 1E730-A2000B-ZP Steering Support Assembly

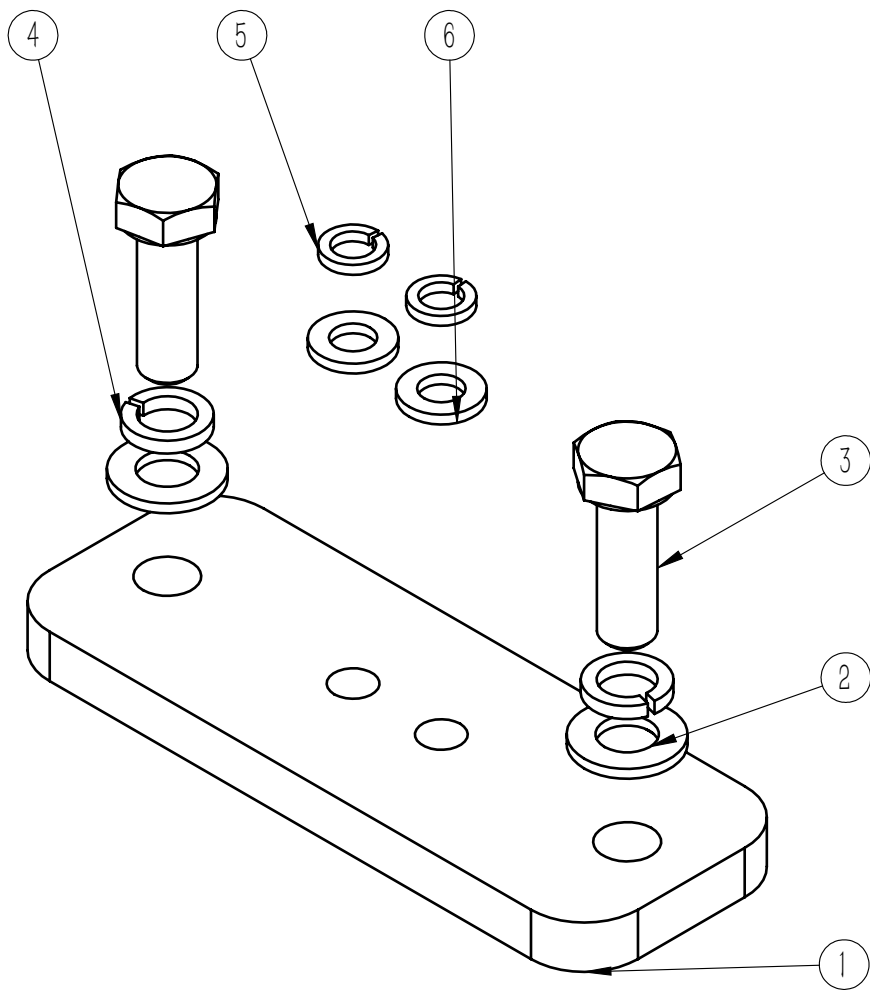
MEG20F202 Seies



No.	Code	Name		Remark
1	MB15.1.19A	Steering column	1	
2	GB5782 M10x70	Hexagon head bolts	4	
3	GB97.1 10	Flat washer	4	
4	GB93 10	Spring washer	4	
5	LP-133 M6	M6 reed nuts	2	
6	DB-S M6x20	Chamfered hexagon socket screws	2	
7	GB889.1 M10	Hexagon locknuts with non-metallic inserts type 1	4	
8	TB2025.2.5	Rubber sleeve	2	
9				
10				
11				
12				
13				
14				
15				
16				
17				
18				
19				
20				
21				
22				
23				
24				

Fig 1-5 TE30.1.3F09-ZP  
 Assembly of Pressure Plate on Drive Frame

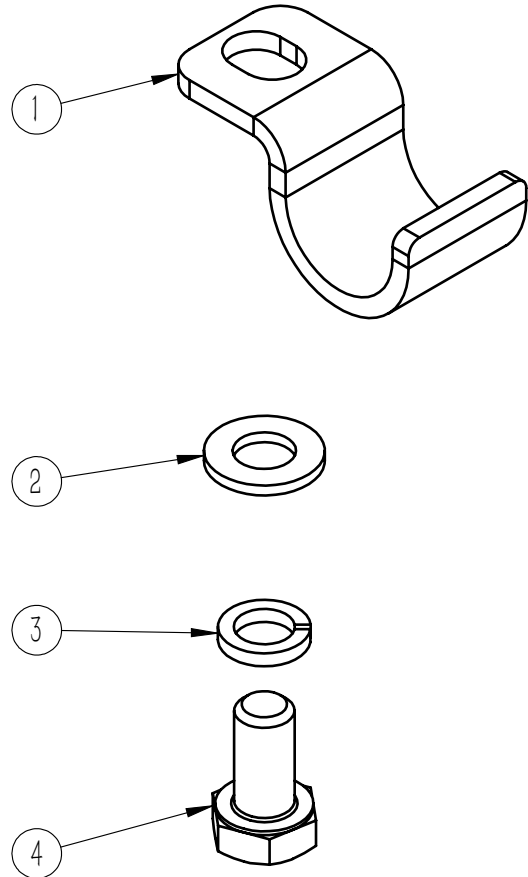
MEG20F202 Series



No.	Code	Name	Qty.	Remark
1	TE30.1.3F09	Drive frame upper plate	1	
2	GB97.1 8	Flat washer	2	
3	GB5783 M8x25	Hexagon head bolt	2	
4	GB93 8	Spring washer	2	
5	GB93 6	Spring washer	2	
6	GB97.1 6	Flat washer	2	
7				
8				
9				
10				
11				
12				
13				
14				
15				
16				
17				
18				
19				
20				
21				
22				
23				
24				

Fig 1-6 TKA15.3.9-ZP Single Side Single Pipe Clamp Assembly

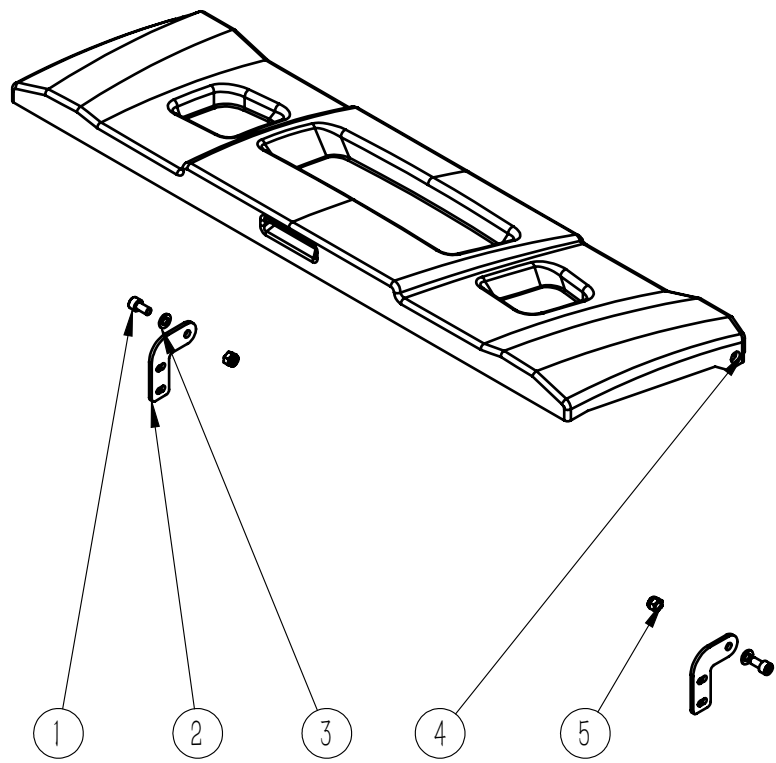
MEG20F202 Series



No.	Code	Name	Qty.	Remark
1	TKA15.3.9	Single side single pipe clamp	1	
2	GB97.1 8	Flat washer	1	
3	GB93	Spring washer	1	
4	GB5783 M8x16	Hexagon head bolt	1	
5				
6				
7				
8				
9				
10				
11				
12				
13				
14				
15				
16				
17				
18				
19				
20				
21				
22				
23				
24				

Fig 1-7 1E730-H2000-ZP Battery Cover Assembly

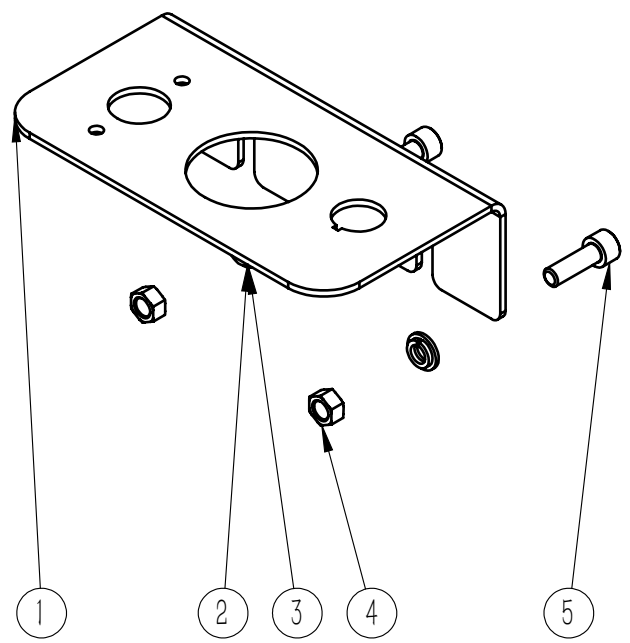
MEG20F202 Series



No.	Code	Name	Qty.	Remark
1	GB70.1 M8x16	Hexagon socket head screws	2	
2	1E730-H2001	Mounting plate	2	
3	GB97.1 8	Flat washers	2	
4	MB15.1.21	Battery cover	1	
5	GB889.1 M8	Type 1 non-metallic insert hexagonal lock nut	2	
6				
7				
8				
9				
10				
11				
12				
13				
14				
15				
16				
17				
18				
19				
20				
21				
22				
23				
24				

Fig 1-8 MB15.1.20-ZP Instrument Panel Assembly

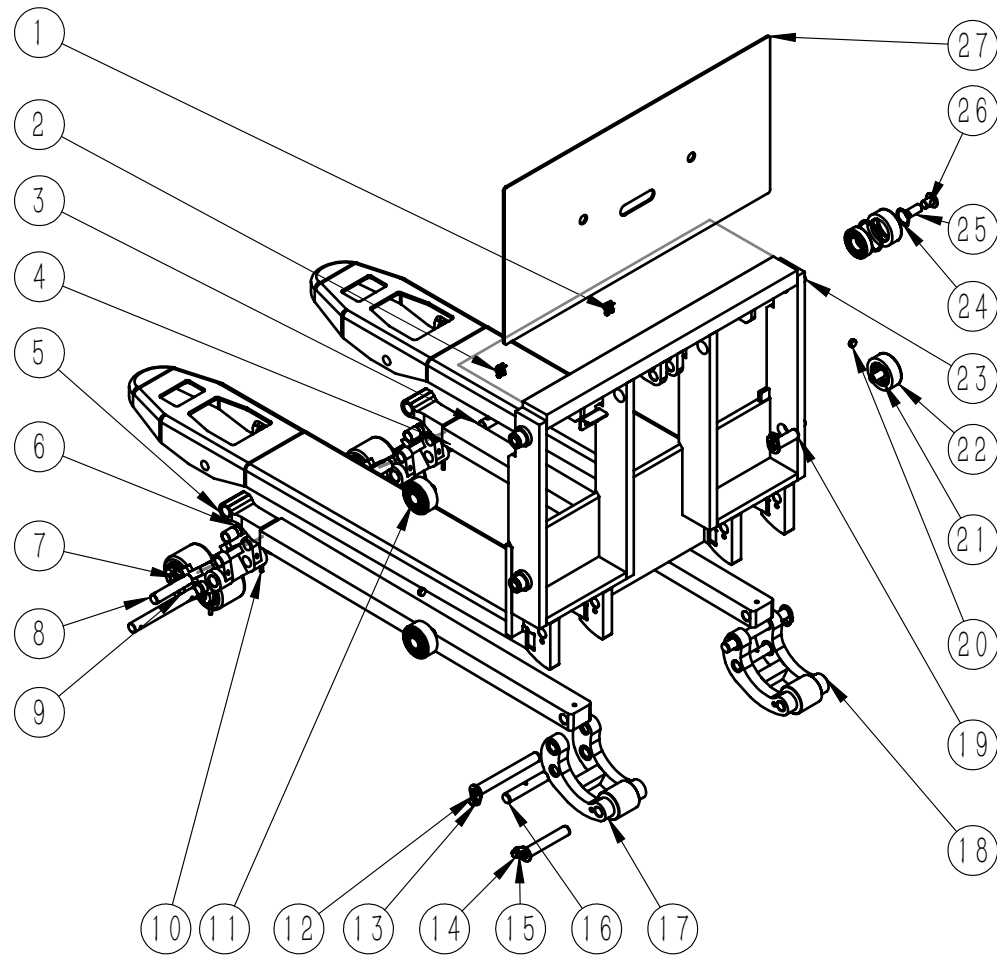
MEG20F202 Series



No.	Code	Name	Qty.	Remark
1	MB15.1.20	Dashboard	1	
2	GB93	Spring washer	2	
3	GB97.1 8	Flat washer	2	
4	GB6170 M8	Type 1 hexagonal nut	2	
5	GB70.1 M8x25	Hexagon socket head screws	2	
6				
7				
8				
9				
10				
11				
12				
13				
14				
15				
16				
17				
18				
19				
20				
21				
22				
23				
24				

Fig 2-1 1E730-F0000AF04 Fork Carriage Component

MEG20F202 Series

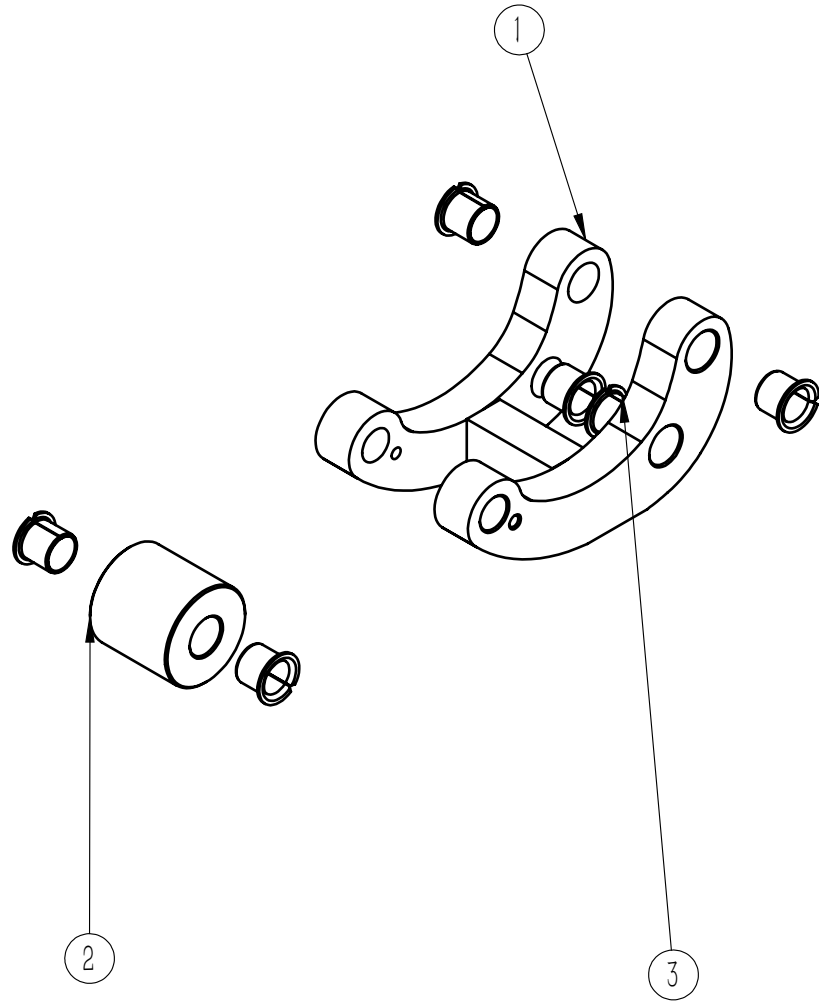


No.	Code	Name	Qty.	Remark
1	DB-S M6x16	Beveled hexagon socket screw	2	
2	LP-133 M6	M6 reed nut	2	
3	TE25.2.6	Support plate shaft	2	
4	HZF202315	Sliding bearing	8	
5	1E730-F2000	Push rod welding	2	
6	HZ202325	Sliding bearing	4	
7	1E730-F0001	Front wheel bracket	2	
8	TE25.2.10	Push rod shaft	2	
9	TE25.2.11	Front wheel assembly	2	
10	GB879.1 5x30	Elastic cylindrical pin	4	
11	GB893.1 62	Elastic retaining ring for hole	4	
12	XZ20-170-LW	Ear plate pin	2	
13	GB93	Spring washer	5	
14	GB5783 M8x16	Hexagon head bolts	5	
15	GB97.1 8	Flat washers	5	
16	ZDZ20110-055A	Stop shaft	2	
17	1E730-F3000	Lift arm assembly	2	
18	XZ20-115-LW	Ear plate pin	2	
19	XZ20-060-LW	Ear plate pin	1	
20	TEP25.2.12.2	Magnet	2	
21	GB276 6206-2Z	Deep groove ball bearing	4	
22	TE40.2.11	Column roller	4	
23	1E730-F1000A	Fork frame welding	1	
24	GB894.1 30	Retaining rings for shafts	4	

No.	Code	Name	Qty.	Remark
25	GB77 M16x35	Hexagon socket flat end set screws	4	
26	TB2025.1.16	Sliding shaft	4	
27	1E730-F5000	Panel welding	1	

Fig 2-2 1E730-F3000 Lift Arm Assembly

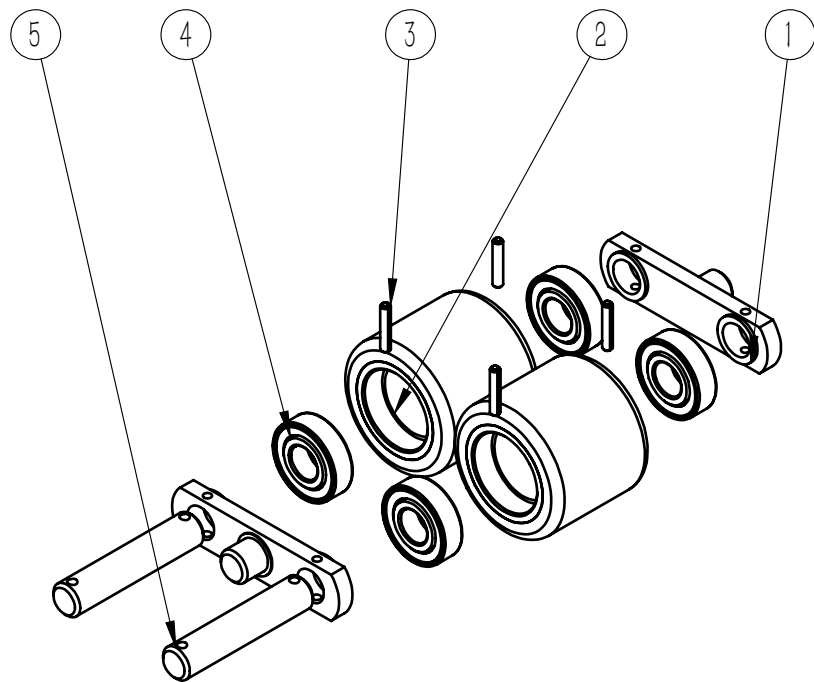
MEG20F202 Series



No.	Code	Name	Qty.	Remark
1	1E730-F3100	Lift arm welding	1	
2	1E730-F3002	Pressure wheel	1	
3	HZF202320	Sliding bearing	6	
4				
5				
6				
7				
8				
9				
10				
11				
12				
13				
14				
15				
16				
17				
18				
19				
20				
21				
22				
23				
24				

Fig 2-3 TE25.2.11 Front Wheel Assembly

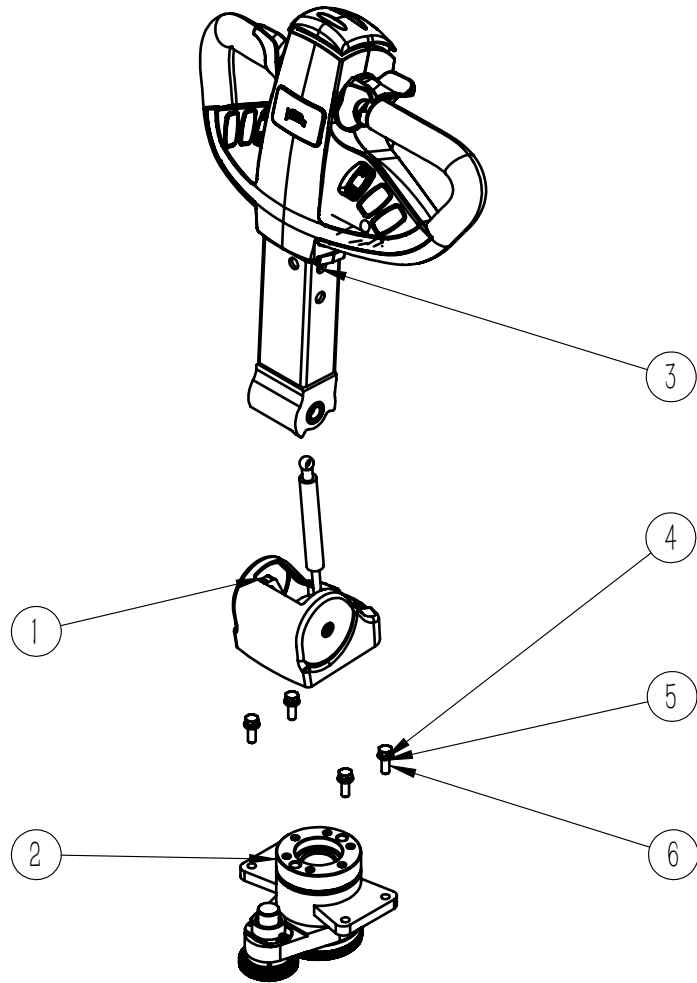
MEG20F202 Series



No.	Code	Name	Qty.	Remark
1	TE25.2.11.1	Front wheel plate	2	
2	BCL80×70	Load-bearing wheel	2	
3	GB879.1 5×30	Elastic cylindrical pin	4	
4	GB276 6204-2Z	Deep groove ball bearing	4	
5	TB2025.1.13.2	Front axle	2	
6				
7				
8				
9				
10				
11				
12				
13				
14				
15				
16				
17				
18				
19				
20				
21				
22				
23				
24				

Fig 3-1 MB15.5 Steering System

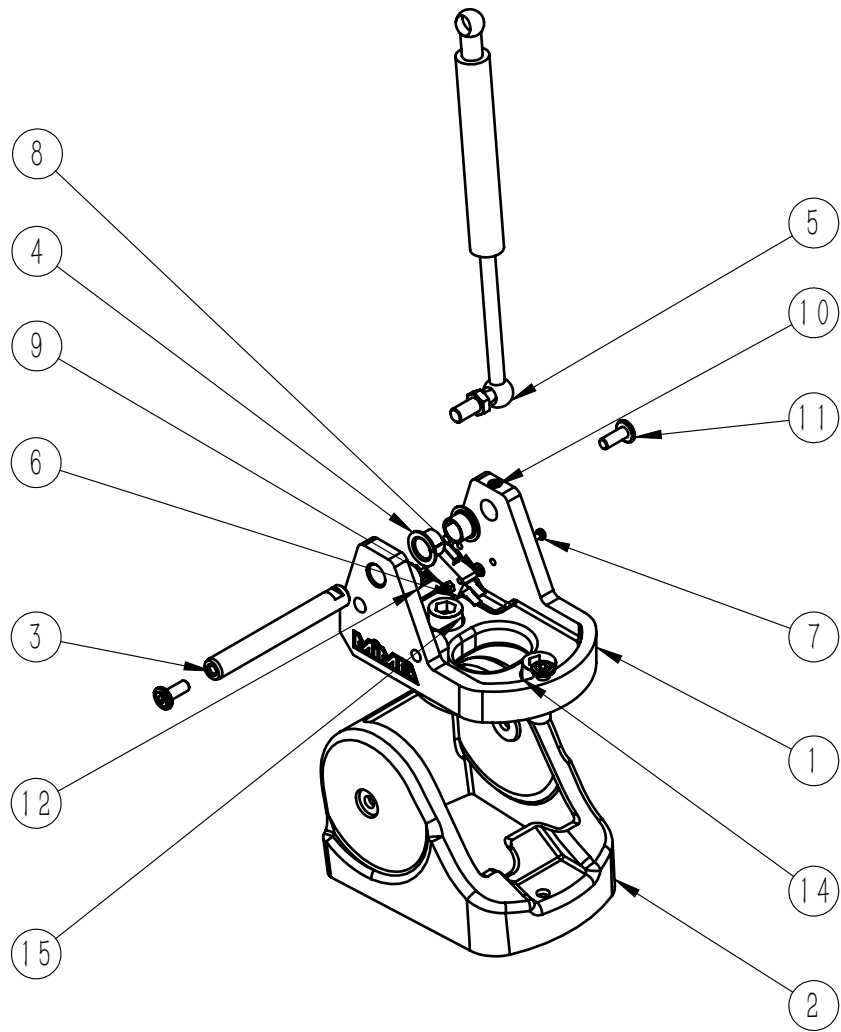
MEC20F204 Series



No.	Code	Name	Qty.	Remark
1	BCZ31	Joystick Assemblies	1	
2	DZX24111.2	Upper Steering Components	1	
3	MB20.5.2	Handlebar Joystick Assembly	1	
4	GB93	Spring washers	4	
5	GB97.1 8	Flat Washers	4	
6	GB5783 M8x25	Hexagon head bolts	4	
7				
8				
9				
10				
11				
12				
13				
14				
15				
16				
17				
18				
19				
20				
21				
22				
23				
24				

Fig 3-2 BCZ31 Joystick Assembly

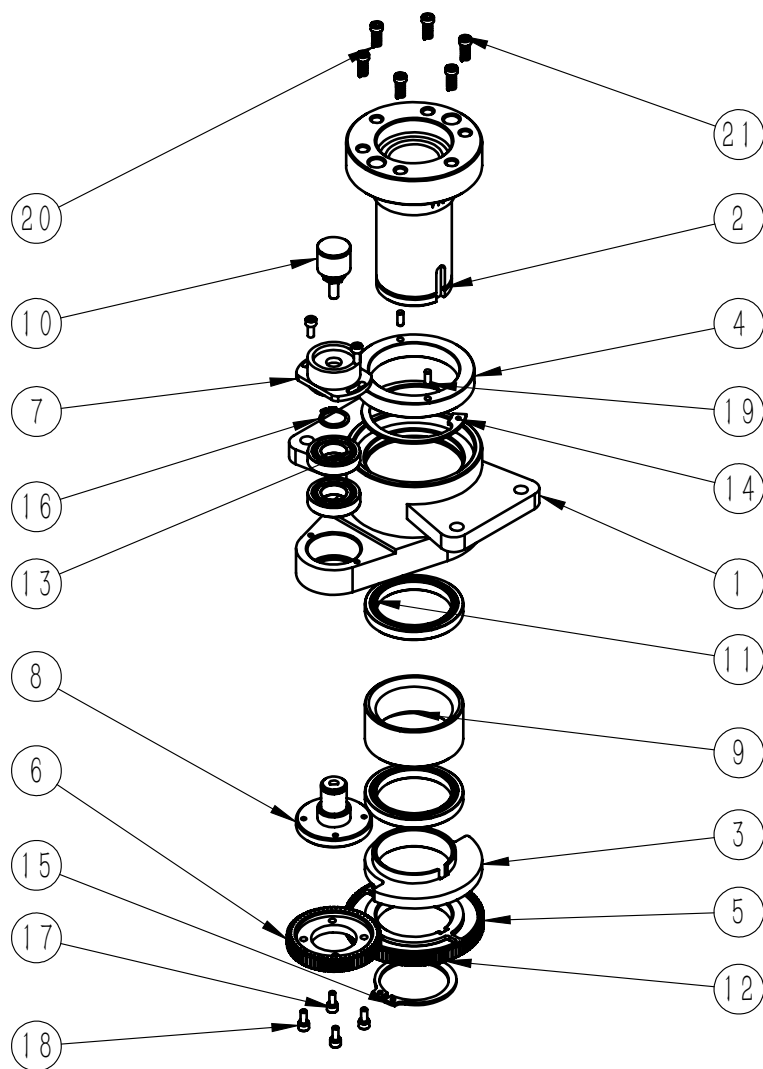
MEC20F204 Series



No.	Code	Name	Qty.	Remark
1	BCZ31.2	Handlebar Bracket	1	
2	BCZ31.3	Handlebar Shroud	1	
3	BCZ31.4	Handlebar Pins	1	
4	HZF121410	Slide Bearing	2	
5	BQTH220	Gas Spring	1	
6	RV-165-1C25-1	Joystick microswitch assemblies	1	
7	GB818 M3x20	Cross recessed pan head screws	2	
8	GB97.1 3	Flat washers	2	
9	GB6170 M3	Hexagon nuts type 1	2	
10	GB78 M6x10	Hexagon socket set screws with cone point	1	
11	DB-S M6x16	Chamfered hexagon socket head cap screws	3	
12	GB70.1 M10x12	Hexagon socket cheese head screws	1	
13	GB93 10	Spring washers	1	
14	GB93 12	Spring washers	2	
15	GB70.1 M12x25	Hexagon socket cheese head screws	2	
16				
17				
18				
19				
20				
21				
22				
23				
24				

Fig 3-3 DZX24111.2 Upper Steering Component

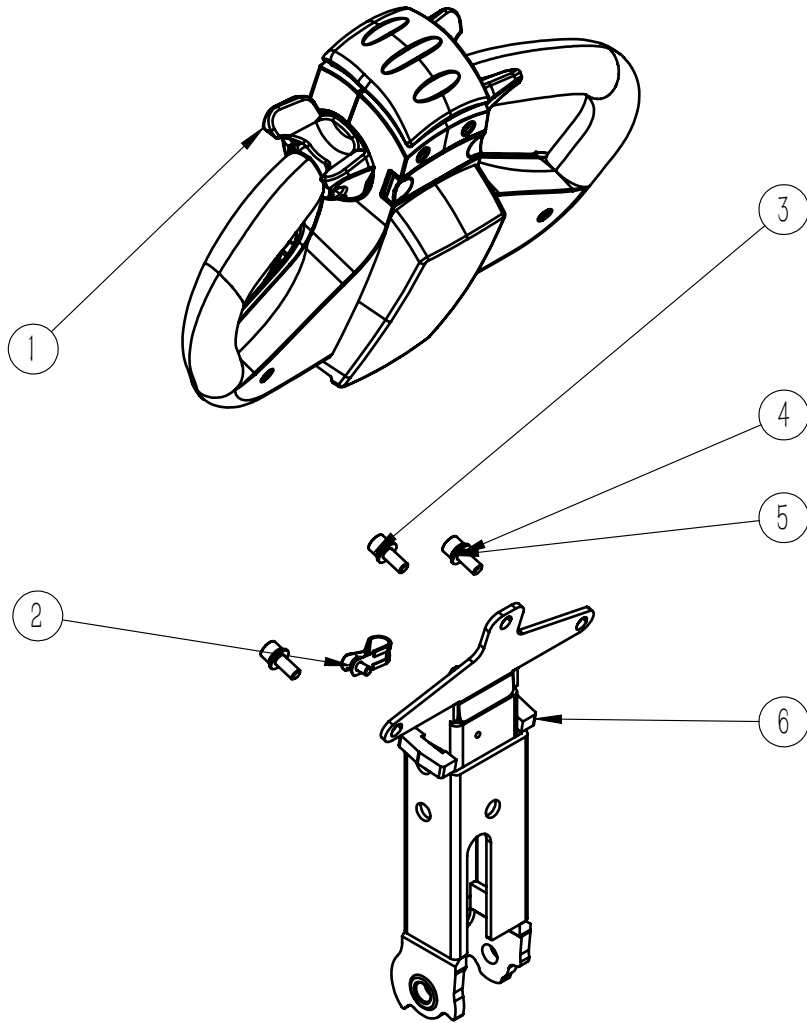
MEC20F204 Series



No.	Code	Name	Qty.	Remark
1	DZX24111.2.1	Upper Steering Seat	1	
2	DZX24111.2.2	Upper steering shaft	1	
3	DZX24110.2.3	Limit Block	1	
4	DZX24111.2.4	Friction plate	1	
5	DZX24110.2.5	Steering pinion	1	
6	DZX24110.2.6	Steering Pinion	1	
7	DZX24110.2.7	Potentiometer mounting plate	1	
8	DZX24110.2.8	Transition shaft	1	
9	DZX24111.2.9	Retaining Ring	1	
10	WDH22L 0505 W360-1	Digital Potentiometer	1	
11	GB276 61810-2Z	Deep Groove Ball Bearing	2	
12	GB1096 8x7x20C	Plain Type Flat Key	1	
13	GB276 16003-2Z	Deep groove ball bearings	2	
14	GB893.2	65 Elastic Retaining Ring for Hole	1	
15	GB894.2 50	Elastic Retaining Rings for Shafts	1	
16	GB894.1 17	Shaft retaining rings	1	
17	GB93 4	Spring washers	4	
18	GB70.1 M4x10	Hexagon socket cheese head screws	6	
19	GB119.2 4x10	Cylindrical pins	2	
20	GB2089 YA1x5x15	Cylindrical compression springs	6	
21	GB77 M8x5	Hexagon socket set screws with flat point	6	
22				
23				
24				

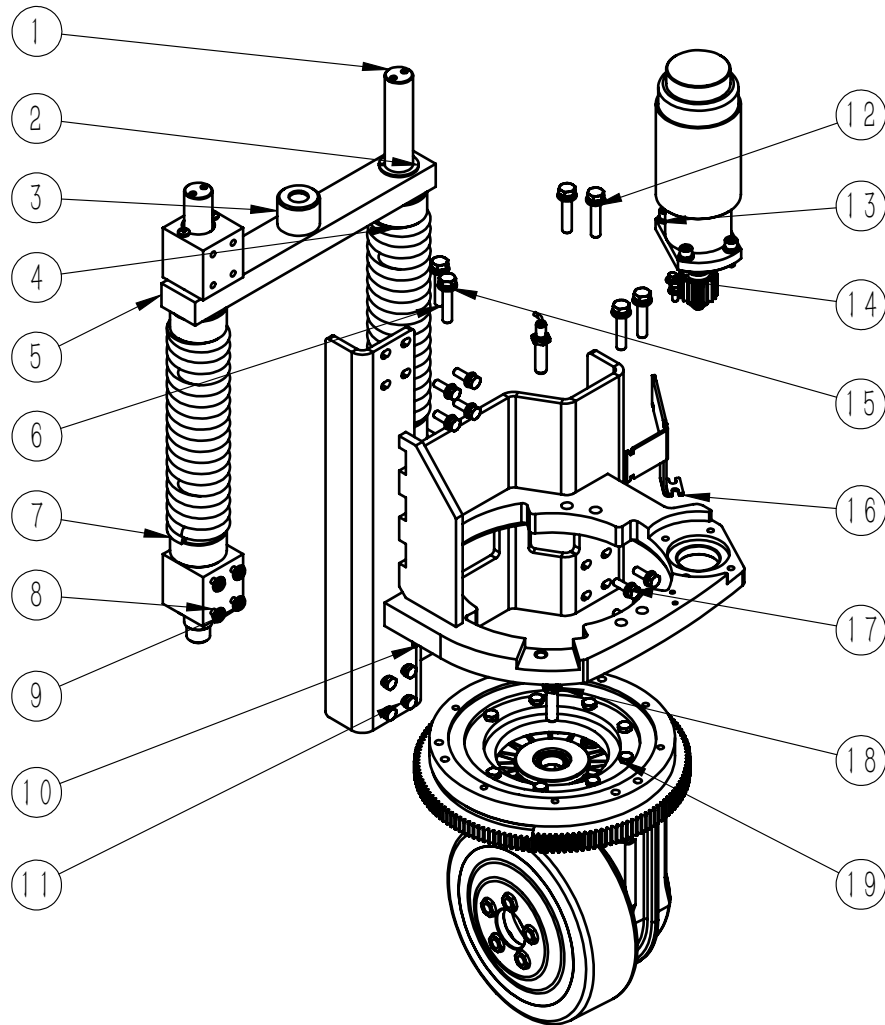
Fig 3-4 MB20.5.2 Handle Joystick Assembly

MEC20F204 Series



No.	Code	Name	Qty.	Remark
1	T623-4	Handlebar Assembly	1	
2	RSC1-12-ZP	Cable Clamp Assembly	1	
3	GB70.1 M8x20	Hexagon socket head cap screws	3	
4	GB97.1 8	Flat Washers	3	
5	GB93	Spring Washers	3	
6	BCZ41.1	Joystick	1	
7				
8				
9				
10				
11				
12				
13				
14				
15				
16				
17				
18				
19				
20				
21				
22				
23				
24				

Fig 4-1 MB15.4A Drive System

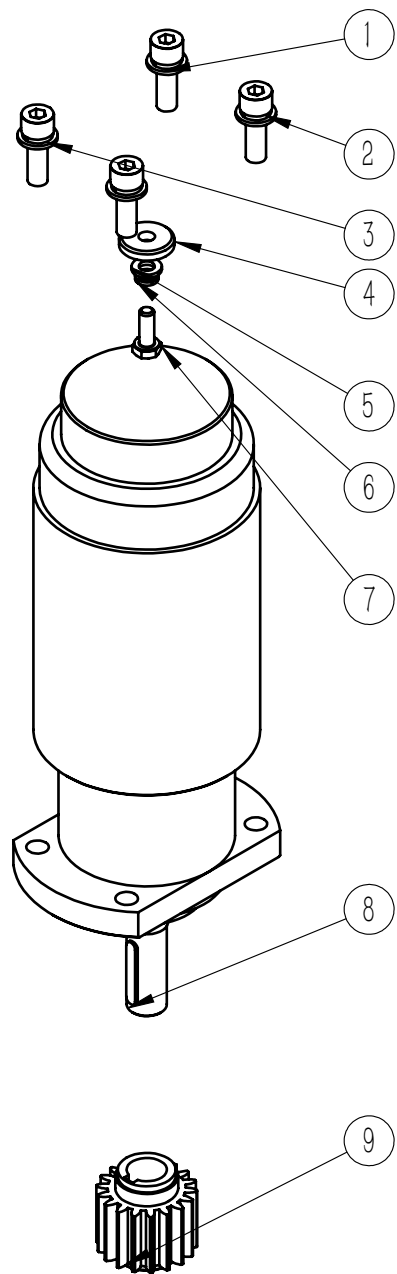


MEC20F204 Series

No.	Code	Name	Qty.	Remark
1	TE30.4.2F09	Guide columns	2	
2	HZF303426	Slide bearing	2	
3	TE30.4.6F09	Cushion block	1	
4	TE30.4.5F09	Nylon guide sleeve	4	
5	TE30.4.4F09	Pressure plate	1	
6	GB5782 M10x50	Hexagon head bolts	6	
7	GB2089 YA12x55x260	Cylindrical helical compression springs	2	
8	TE30.4.3F09	Guide sleeve assemblies	3	
9	GB93	Spring Washers	12	
10	MB20.4.1A	Drive bracket weld-on	1	
11	GB5783 M8x25	Hexagon head bolts	12	
12	GB97.1 10	Flat washers	6	
13	DZX24211.3	Lower steering parts	1	
14	QC340 M6x12	Hexagonal flange bearing surface toothed bolts	2	
15	GB93 10	Spring washers	6	
16	MB15.1.28	Motor cable brackets	1	
17	GB97.1 8	Flat washers	12	
18	IME12-04BPSZW2S-3	Proximity switches	2	
19	BQD23002-ZF	Drive unit	1	
20				
21				
22				
23				
24				

Fig 4-2 DZX24211.3 Lower Steering Component

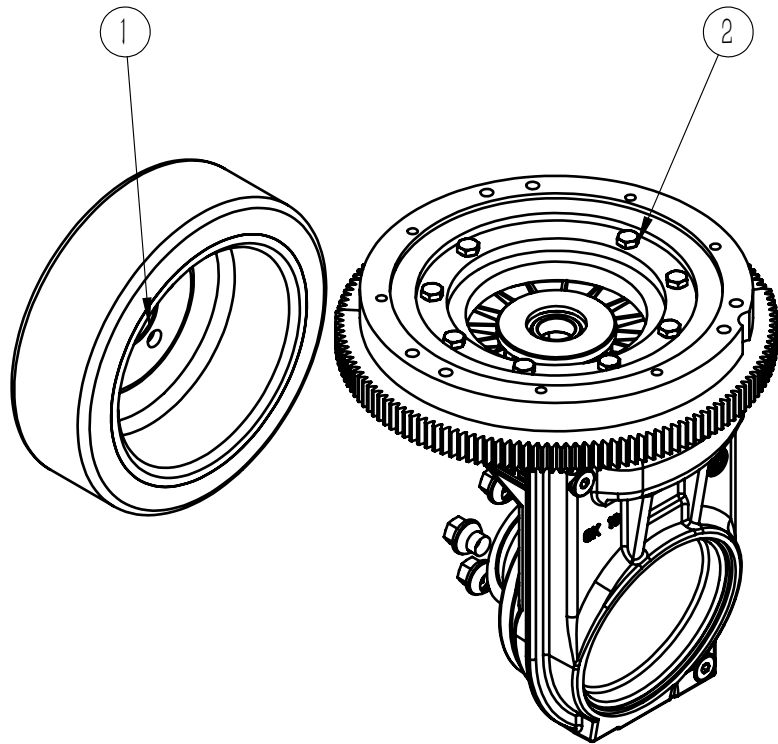
MEG20F202 Series



No.	Code	Name	Qty.	Remark
1	GB97.1 8	Flat Washers	4	
2	GB70.1 M8×25	Hexagon socket Head	4	
3	GB93	Screw spring washer	4	
4	BDZ1.4.4	Shaft end retaining ring	1	
5	GB97.1 6	Flat Washers	1	
6	GB93 6	Spring washer	1	
7	GB5783 M6×16	Hexagon head bolts	1	
8	ZYT24200D-G23.9	Steering unit	1	
9	BDZ1.4.1	Steering pinion	1	
10				
11				
12				
13				
14				
15				
16				
17				
18				
19				
20				
21				
22				
23				
24				

Fig 4-3 BQD23002-ZF Drive Unit

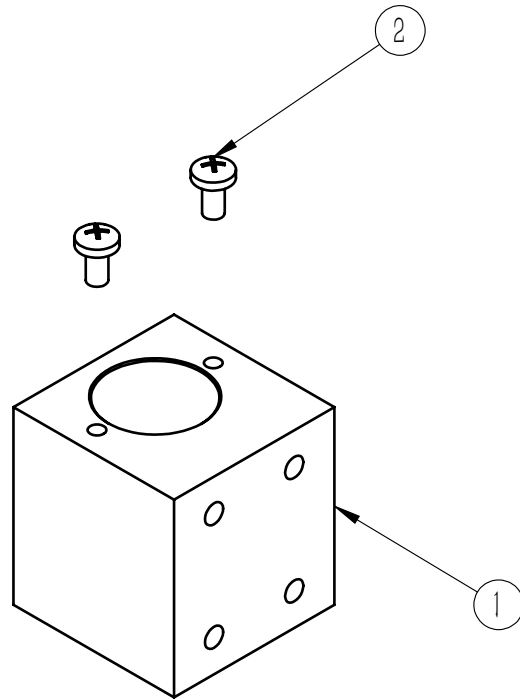
MEG20F202 Series



No.	Code	Name	Qty.	Remark
1	BQL230x75E	Driving wheel	1	
2	BQD23002.1-ZF	Gear box assembly	1	
3				
4				
5				
6				
7				
8				
9				
10				
11				
12				
13				
14				
15				
16				
17				
18				
19				
20				
21				
22				
23				
24				

Fig 4-4 TE30.4.3F09 Guide Set Assembly

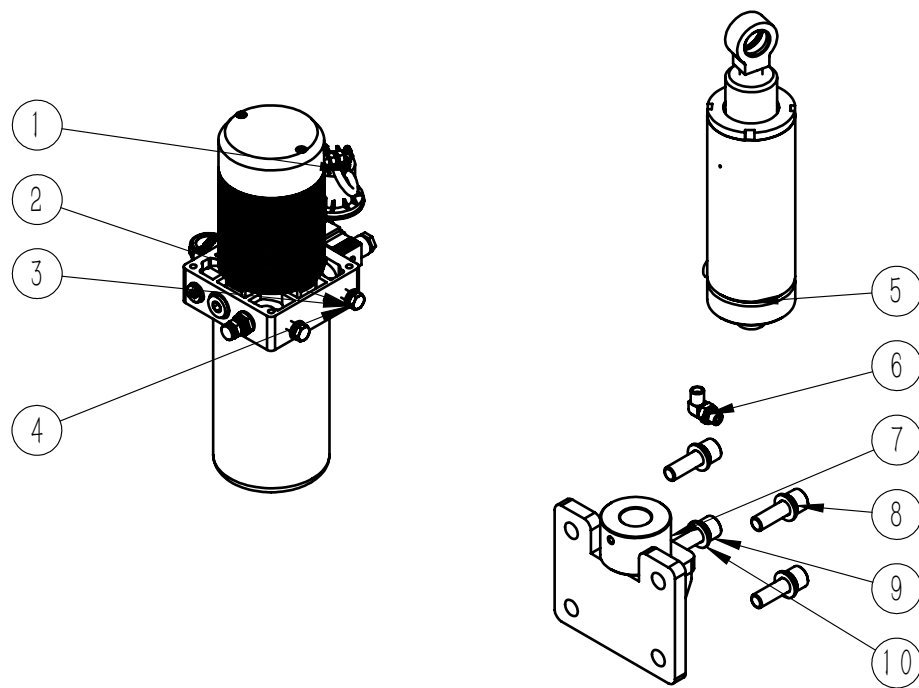
MEG20F202 Series



No.	Code	Name	Qty.	Remark
1	TE30.4.3.1F09	Guide sleeve	1	
2	GB818 M6×12	Cross recessed pan head screws	2	
3				
4				
5				
6				
7				
8				
9				
10				
11				
12				
13				
14				
15				
16				
17				
18				
19				
20				
21				
22				
23				
24				

Fig 5-1 1E730-K0000 Hydraulic Component

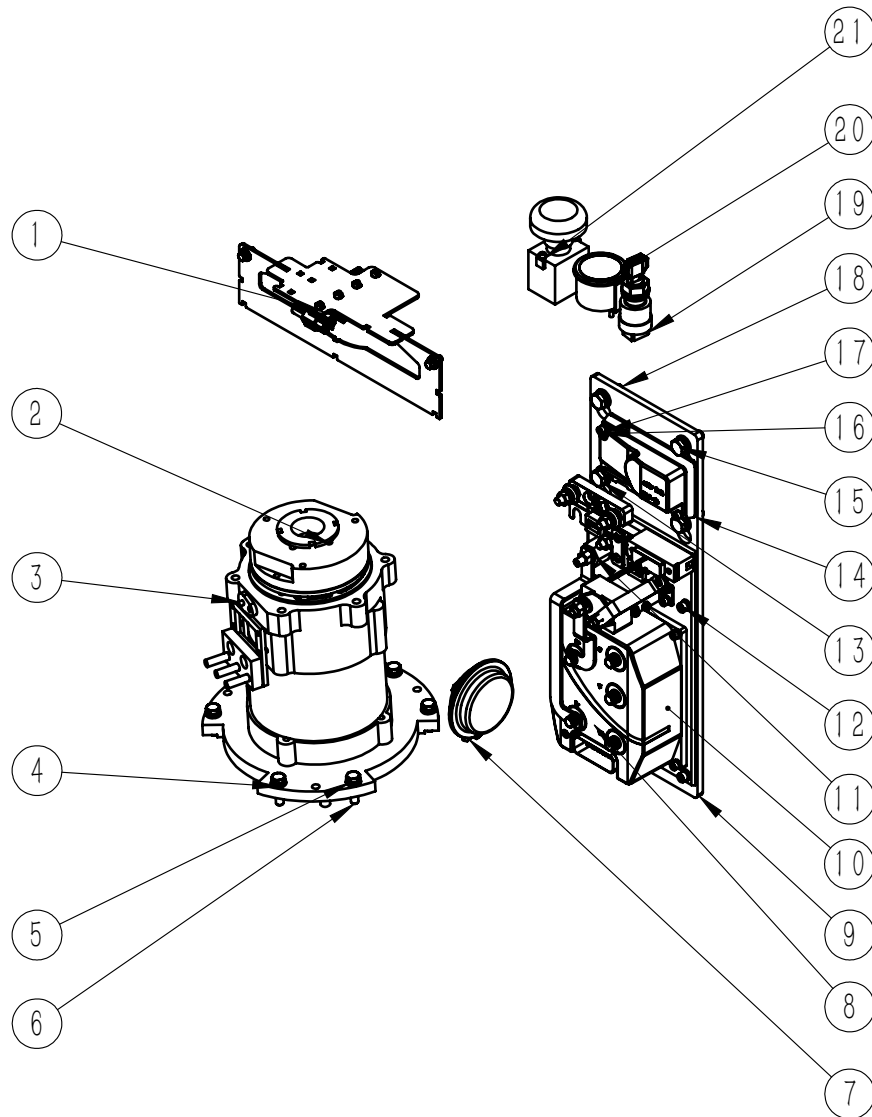
MEG20F202 Series



No.	Code	Name	Qty.	Remark
1	195-07	Pumping station	1	
2	GB93 10	Spring washer	2	
3	GB5783 M10x25	Hexagon head bolts	2	
4	GB97.1 10	Flat Washers	2	
5	TE60.3.4	Lifting cylinder	1	
6	S1CG9-14-04OGDQ	British pipe 90° elbow joint	2	
7	1E730-K1000	Cylinder seat welding	1	
8	GB93 16	Spring washer	4	
9	GB70.1 M16x50	Hexagon socket head screws	4	
10	GB97.1 16	Flat washers	4	
11				
12				
13				
14				
15				
16				
17				
18				
19				
20				
21				
22				
23				
24				

Fig 6-1 1EG25-N0000F202 Electrical Component

MEG20F202 Series



No.	Code	Name	Qty.	Remark
1	MB15.1.29-ZP	Bracket plate welding assembly	1	
2	REB0910(20)PF	Electromagnetic brake for forklift	1	
3	XQJ1.5-BYT10	Driving motor	1	
4	GB97.1 8	Flat Washers	6	
5	GB93	Spring washer	6	
6	GB5783 M8x30 DL2280-2	Hexagon head bolts	6	
7	4V-ZP	Electric speaker assembly	1	
8	GB93 6	Spring washer	4	
9	1E730-N0001A	Electrical control mounting plate	1	
10	1232E-2121-3	Electronic control assembly	1	
11	GB70.1 M6x20	Hexagon socket head screws	4	
12	GB97.1 6	Flat Washers	4	
13	GB93 10	Spring washer	4	
14	1220C-2201	Controller	1	
15	GB97.1 10	Flat Washers	4	
16	GB70.1 M5x25	Hexagon socket head screws	2	
17	GB93 5	Spring washer	2	
18	GB5783 M10x30	Hexagon head bolts	4	
19	JK421	Key switch	1	
20	QLB2.847.002	24V battery hour meter instrument	1	
21	ED125-36-ZP	Emergency switch assembly	1	
22				
23				
24				