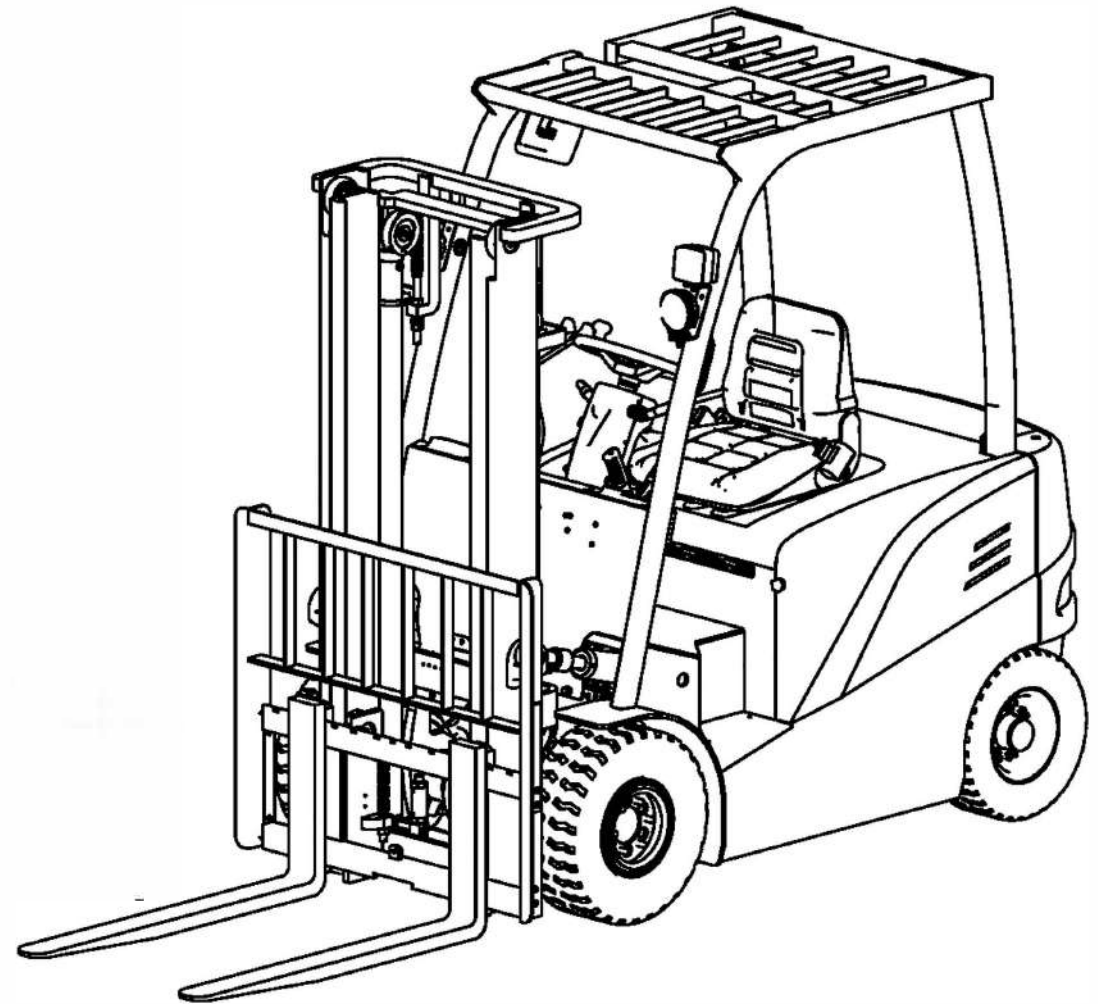


MiMA[®]

MHE DESIGNER & MANUFACTURER

Parts catalogue

TKM series electric counterbalance
forklift truck



BANYITONG SCIENCE&TECHNOLOGY DEVELOPING CO.,LTD.

Introduction

1. This catalogue collects all the parts of mode TK M series electric counterbalance forklift truck ;
2. It indicated the tiem: such as “—2018.8 ” means parts are used to August,2018, "2018.10-" means parts are used from Oct,2018.
- 3.Purchasing parts, it is necessary to specify the model of forklift truck, series number,part number and name and the quantity
- 4.To make sure forklift truck in good condition,please make use of our parts to replace or repair.
- 5.To improve the quality of the product, we will update it.For the details,please contact free to sales department .

CONTENT

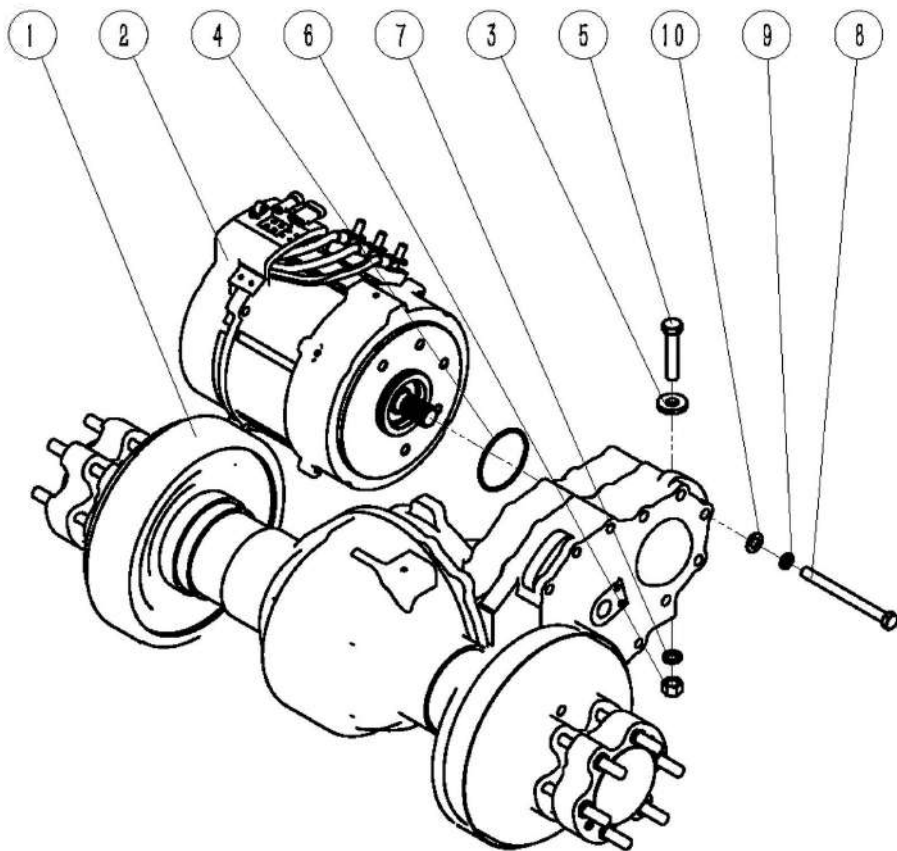
No.	Chart No.	Parts Name	Applicable Model	Page
Driving system				
chart 1-1		driving system	1.5~5.0t	1-1
chart 1-2		front wheel	1.5	1-2
chart 1-3		front wheel	2.0~5.0t	1-3
Steering system				
chart 2-1		steering gear assembly	1.5~5.0t	2-1
chart 2-2		steering axle	1.5~5.0t	2-2
chart 2-3		rear wheel	1.5~4.0t	2-3
chart 2-4		rear wheel	4.5~5.0t	2-4
Body system				
chart 3-1		body system I	1.5~5.0t	3-1
chart 3-2		body system II	1.5~5.0t	3-3
chart 3-3		body system III	1.5~5.0t	3-4
chart 3-4		body system IV	1.5~5.0t	3-6
chart 3-5		overhead guard	1.5~5.0t	3-7

CONTENT

No.	Chat No.	Parts Name	Applicable Model	Page
Break system				
chart 4-1		break system	1.5~5.0t	4-1
Hydraulic system				
chart 5-1		oil pump assembly	1.5~5.0t	5-1
chart 5-2		hydraulic circuit	1.5~5.0t	5-3
chart 5-3		Multiple valve assembly	1.5~5.0t	5-5
Electrical system				
chart 6-1		electrical system I	1.5~5.0t	6-1
chart 6-2		electrical system II	1.5~5.0t	6-3
Lifting system				
chart 7-1		lifting system	1.5~5.0t	7-1
chart 7-2		fork carriage assembly	1.5~5.0t	7-4
chart 7-3		mast	1.5~5.0t	7-6

chart I-I driving system

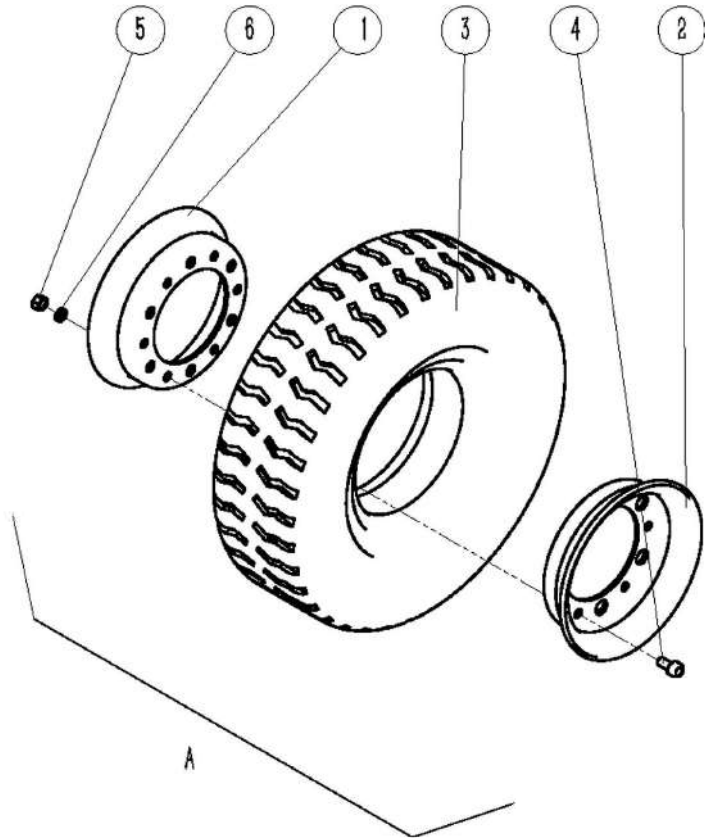
1.5~5.0t



No	Part No.	Part Name	Qty	Remarks
1	QXB15-02	battery forklift truck bridge assembly	1	1.5t
1	QXB25-02	battery forklift truck bridge assembly	1	2.0t~3.0t
1	QXB35-21	battery forklift truck bridge assembly	1	3.5t~4.0t
1	QD45B-00000	drive axle	1	4.5t~5.0t
	HDCS50	reduction gearbox	1	4.5t~5.0t
2	XQJ6.8-BYT2	driving motor	1	1.5t~2.5t
2	XQJ9.1-BYT2	driving motor	1	3.0t(48V)
2	XQJ11.75-BYT3	driving motor	1	3.0t(80V)~4.0t
2	XQJ16.6-BYT6	driving motor	1	4.5t~5.0t
3	MK20.4.2	reduction gearbox fixed shim	1	1.5t~4.0t
3	GB96.1 16	big washer	1	4.5t~5.0t
4	GB3452.1 85×3.55	hydraulic pneumatic o shaped rubber seal ring	1	
5	GB5786 M16×1.5×80	hexagon head bolt	1	1.5t~4.0t
5	GB5786 M16×1.5×90	hexagon head bolt	1	4.5t~5.0t
6	GB6171 M16×1.5	1 shaped hex nut	1	1.5t~4.0t
6	1K450L-M1001	reducer supporting	1	4.5t~5.0t
7	GB93 16	spring shim	1	
8	GB5785 M14×1.5×160	hexagonal head bolt	5	1.5t~4.0t
8	GB5785 M14×1.5×130	hexagonal head bolt	5	4.5t~5.0t
9	GB93 14	spring shim	5	
10	GB97.1 14	flat washer	5	

chart 1-2 frontwheel

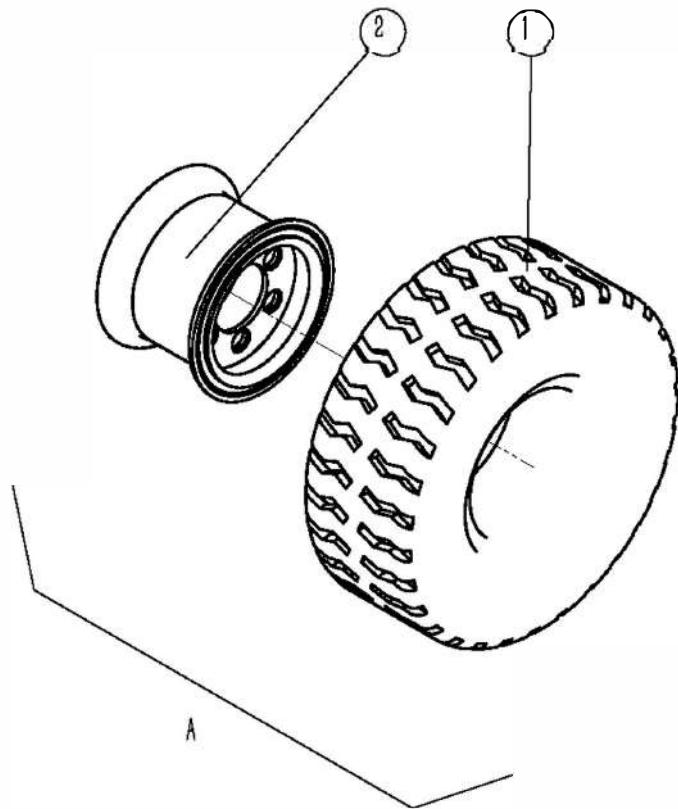
1.5t



No.	Part No.	Part Name	Qty	Remarks
A	QLZP-MK15	front wheel assembly	2	
1	4.00E-9-MK15.1	inner rim	1	
2	4.00E-9-MK15.2	outer rim	1	
3	6.00-9-10PR-MB413	pneumatic tire	1	
4	TK2030.8.7	rim bolt	6	
5	GB8170 M12	1 shaped hex nut	6	
6	GB93 12	spring washer	6	

chart 1-3 front wheel

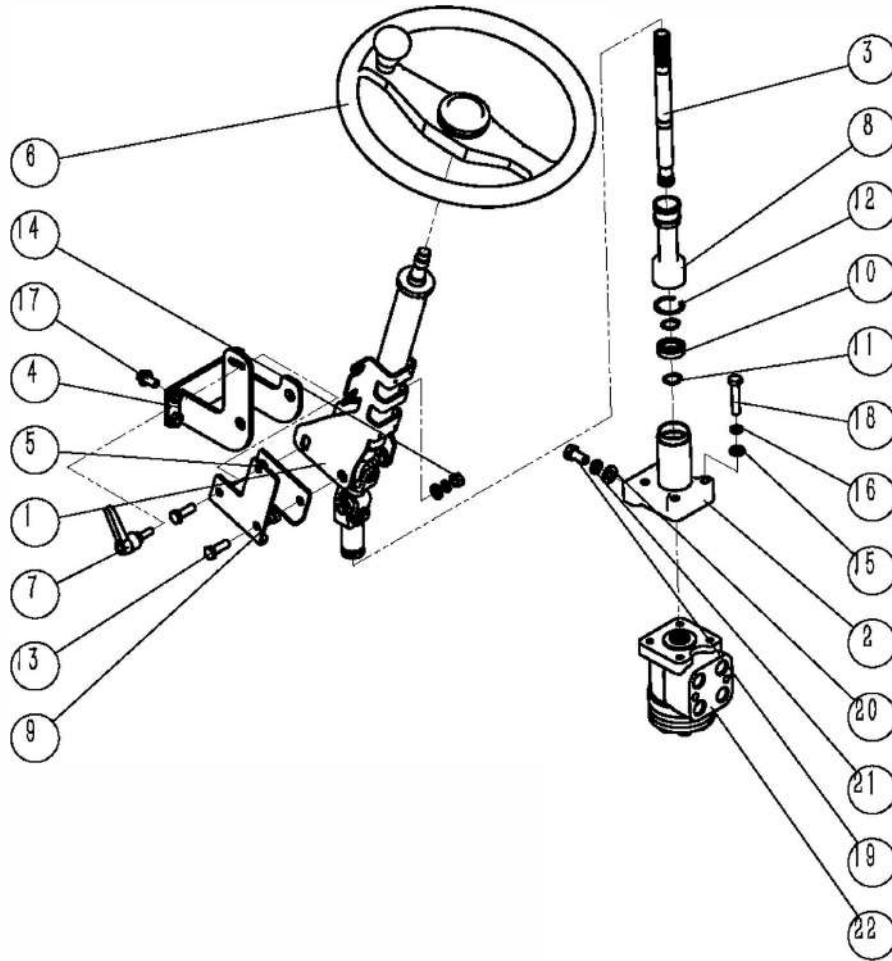
2.0~5.0t



No.	Part No.	Part Name	Qty	Remarks
A	QLZP-MK20	front wheel assembly	2	2.0t~2.5t
A	QLZP-MK30	front wheel assembly	2	3.0t
A	QLZP-MK35	front wheel assembly	2	3.5t~4.0t
A	QLZP-MK50	front wheel assembly	2	4.5t~5.0t
1	21 × 8-9-14PR-C8811	pneumatic tire	1	2.0t~2.5t
1	23 × 9-10-16PR-C8811	pneumatic tire	1	3.0t
1	23 × 10-12-8.00-K3	solid tire	1	3.5t~4.0t
1	250-15-7.5-K3	solid tire	1	4.5t~5.0t
2	6.00E-9-MK20	rim assembly	1	2.0t~2.5t
2	6.50F-10-MKD30	rim assembly	1	3.0t
2	8.00G-12-MK35	rim assembly	1	3.5t~4.0t
2	7.50V-15-MK50	rim assembly	1	4.5t~5.0t

chart 2-1 steering assembly

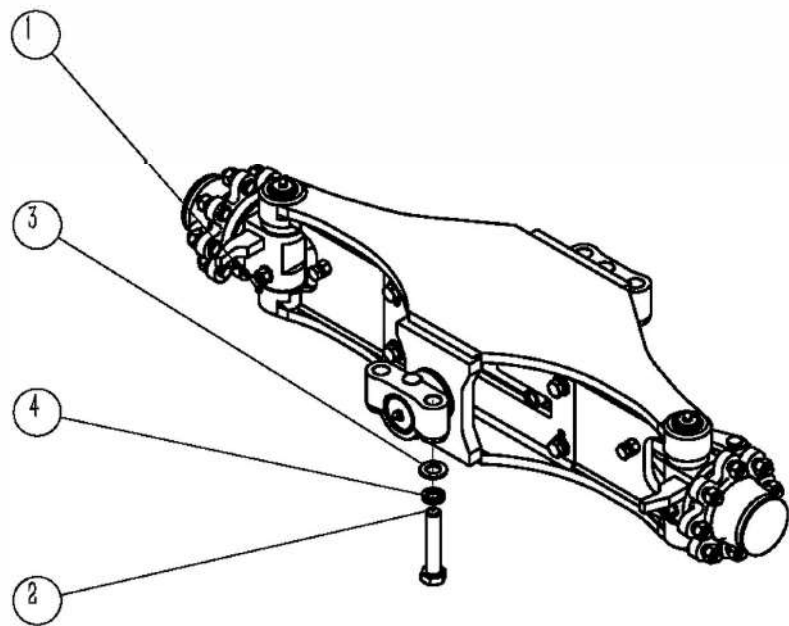
1.5~5.0t



No.	Part No.	Part Name	Qty	Remarks
1	TK2030.5.1.1	steering column assembly	1	
2	TK2030.5.1.2	connecting flange of steering gear	1	
3	MK20.5.1.3	connecting shaft of steering gear	1	
4	IK415L-J1100	steering fixed fram	1	
5	IK415L-J1200	steering column support welding	1	
6	A3600	steering wheel	1	
7	490933	Heavy duty adjusting handle	1	
8	FCT01	dirt-proof boot	1	
9	GT111608	spacer bush	2	
10	GB276 61904-2Z	deep groove ball bearing	1	
11	GB894.1 20	circlip for axle	2	
12	GB893.1 37	circlip for hole	1	
13	GB5783 M10×35	hexagonal head bolt	4	
14	GB6170 M10	1shaped hex nut	2	
15	GB97.1 10	flat washer	2	
16	GB93 10	spring washer	2	
17	QC340 M10×20	hexagonal flange bearing surface with toothed bolt	4	
18	GB5873 M10×50	Hexagon bolt with full thread	4	
19	GB5786 M12×1.25×30	hexagonal head bolt	2	
20	GB97.1 12	flat washer	2	
21	GB93 12	spring washer	2	
22	SCU51-63CS	steering gear	1	1.5t
22	SCU51-80CS	steering gear	1	2.0t~4.0t
22	SCU51-160CS	steering gear	1	4.5t~5.0t

chart 2-2steering axle

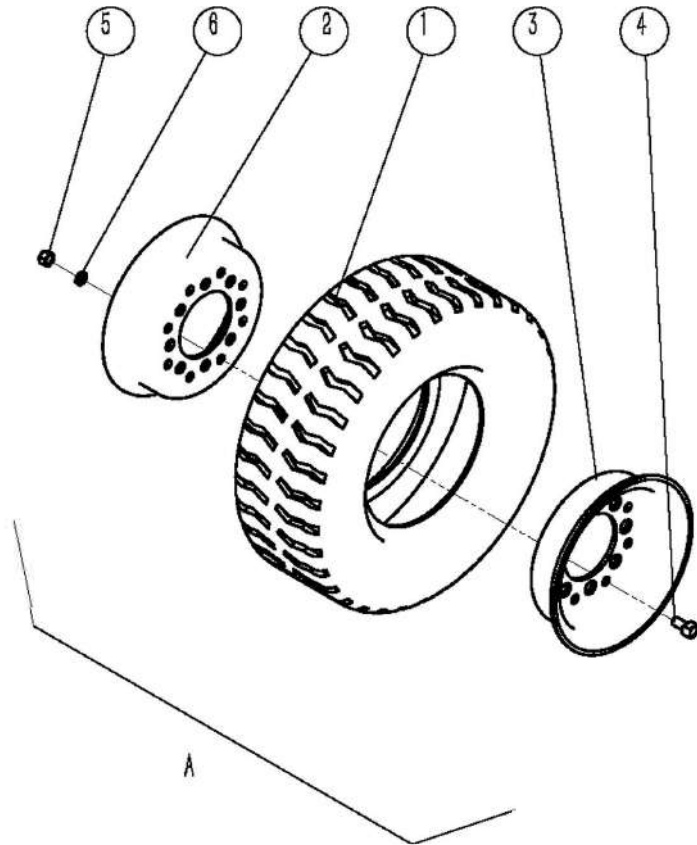
1.5~5.0t



No.	Part No.	Part Name	Qty	Remarks
1	HY-CPD15-ZXQ-000	15T electric forklift steering axle	1	1.5t
1	HY-CPD25-ZXQ-000	2.5T electric forklift steering axle	1	2.0t~3.0t
1	HY-CPD30-ZXQ-000	3T electric forklift steering axle	1	3.5t~4.0t
1	ZD45D-00000	steering axle	1	4.5t~5.0t
2	GB5786 M20×1.5×100	hexagon head bolt	4	1.5t~4.0t
2	GB5786 M16×1.5×90	hexagon head bolt	8	4.5t~5.0t
3	GB97.1 20	flat washer	4	1.5t~4.0t
3	GB97.1 16	flat washer	8	4.5t~5.0t
4	GB93 20	spring washer	4	1.5t~4.0t
4	GB93 16	spring washer	8	4.5t~5.0t

chart 2-3 rear wheel

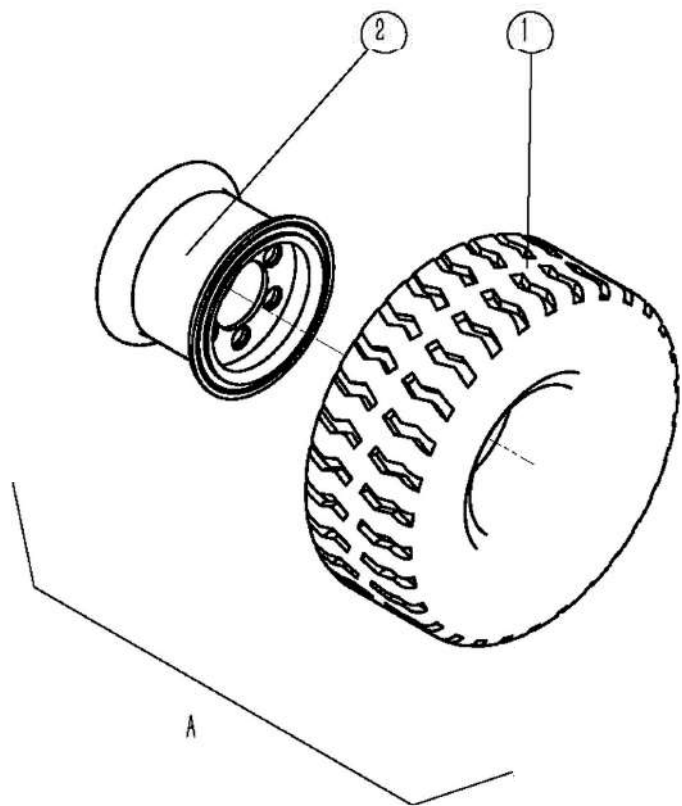
1.5~4.0t



No.	Part No.	Part Name	Qty	Remarks
A	HLZP-TK15	rear wheel assembly	2	1.5t
A	HLZP-MK20	rear wheel assembly	2	2.0t~3.0t
A	HLZP-MK20-S	rear wheel assembly	2	3.5t~4.0t
1	5.00-8-10PR-MB413	pneumatic tire	1	1.5t
1	18x7-8-14PR-C8811	pneumatic tire	1	2.0t~3.0t
1	18x7-8-4.33-K3	solid tire	1	3.5t~4.0t
2	3.50D-8.1	inner rim	1	1.5t
2	4.33R-8.1	inner rim	1	2.0t~4.0t
3	3.50D-8.2	outer rim	1	1.5t
3	4.33R-8.2	outer rim	1	2.0t~4.0t
4	TK2030.8.7	bolt	6	
5	GB6170 M12	1shaped hex nut	6	
6	GB93 12	spring washer	6	

chart 2-4rear wheel

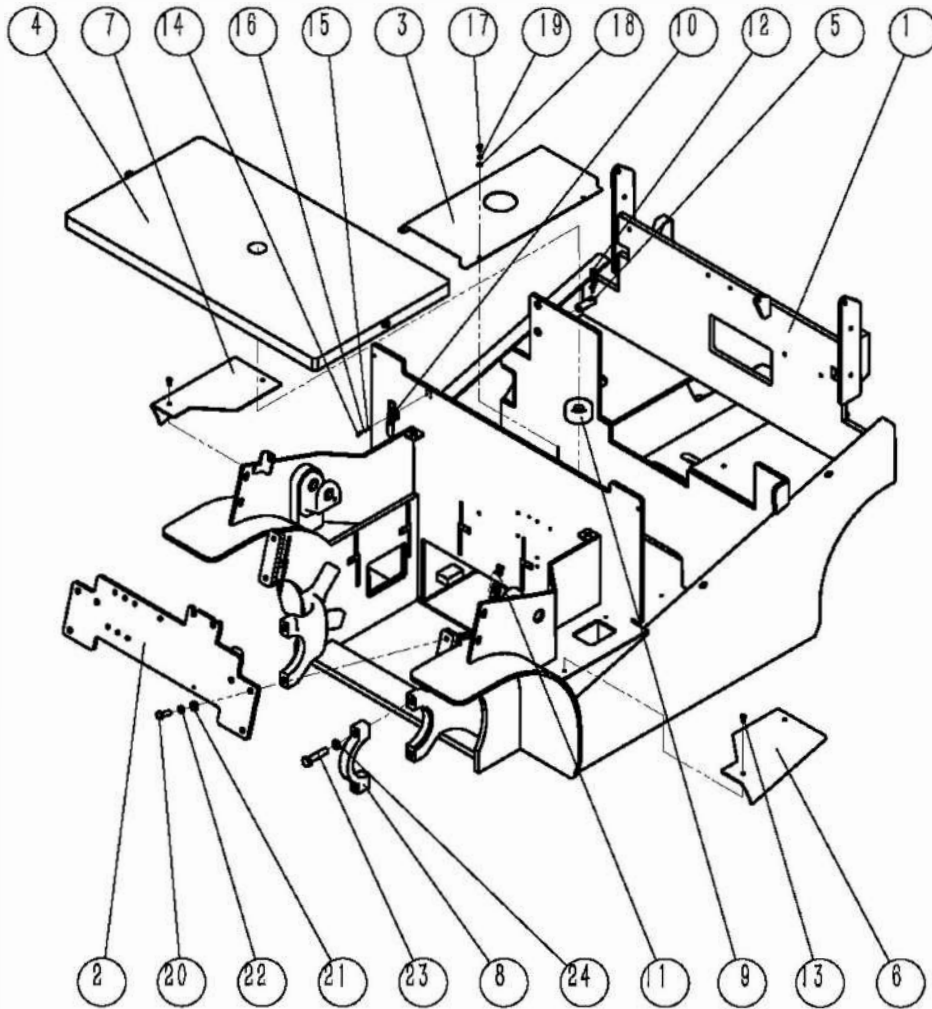
4.5~5.0t



No.	Part No.	Part Name	Qty	Remarks
A	HLZP-TK450	rear wheel assembly	2	
1	21x8-9-S	solid tire	1	
2	6.00E-9	rim assembly	1	

chart 3-1 body system

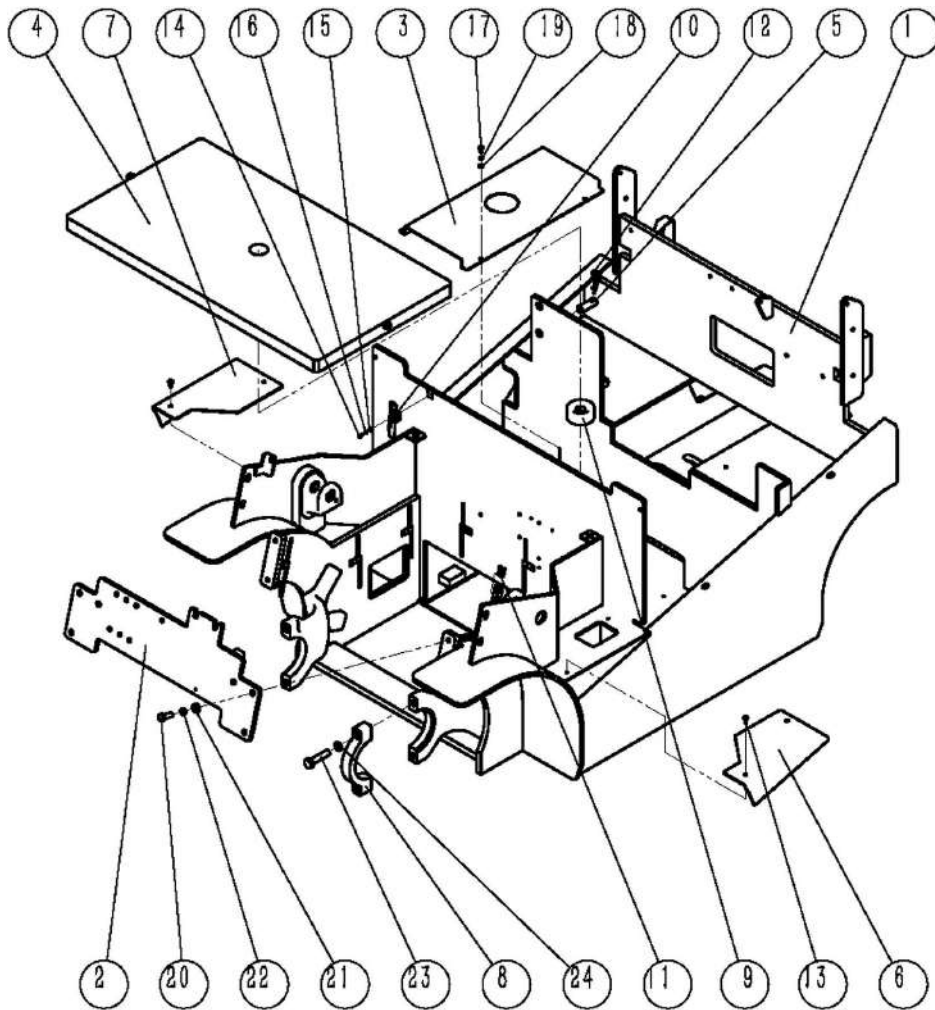
1.5~5.0t



No.	Part No.	Part No.	Qty	Remarks
1	1K415L-A1000	Frame welded	1	1.5t
1	1K420L-A1000	Frame welded	1	2.0t/SWB2.5t
1	1K430L-A1000	Frame welded	1	3.0t/LWB2.5t
1	1K435L-A1000	Frame welded	1	3.5t~4.0t
1	1K450L-A1000	Frame welded	1	4.5t~5.0t
2	1K415L-A0002	front linking board	1	1.5t~4.0t
2	1K450L-A4000	front linking board	1	4.5t~5.0t
3	1K415L-A0007	pipeline cover	1	1.5t
3	1K420L-A0007	pipeline cover	1	2.0t/SWB2.5t
3	1K430L-A0007	pipeline cover	1	3.0t~4.0t/LWB2.5t
4	1K420L-A4000	battery counter weight block welding	1	SWB2.5t
4	1K430L-A4000	battery counter weight block welding	1	3.0t/4.0t
5	1K415L-A7101	battery stop pin	1	1.5t~4.0t
5	1K450L-A0002	battery card board	2	4.5t~5.0t
6	1K415L-H0008	left pedal	1	1.5t
6	1K420L-H0008	left pedal	1	2.0t/SWB2.5t
6	1K430L-H0008	left pedal	1	3.0t~4.0t/LWB2.5t
6	1K450L-H0004	left pedal	1	4.5t~5.0t
7	1K415L-H0009	right pedal	1	1.5t
7	1K420L-H0009	right pedal	1	2.0t/SWB2.5t
7	1K430L-H0009	right pedal	1	3.0t~4.0t/LWB2.5t
7	1K450L-H0005	right pedal	1	4.5t~5.0t
8	MK20.1.12	support cover	2	1.5t~4.0t
8	1K450L-A0003	support cover	2	4.5t~5.0t

chart3-1 body system

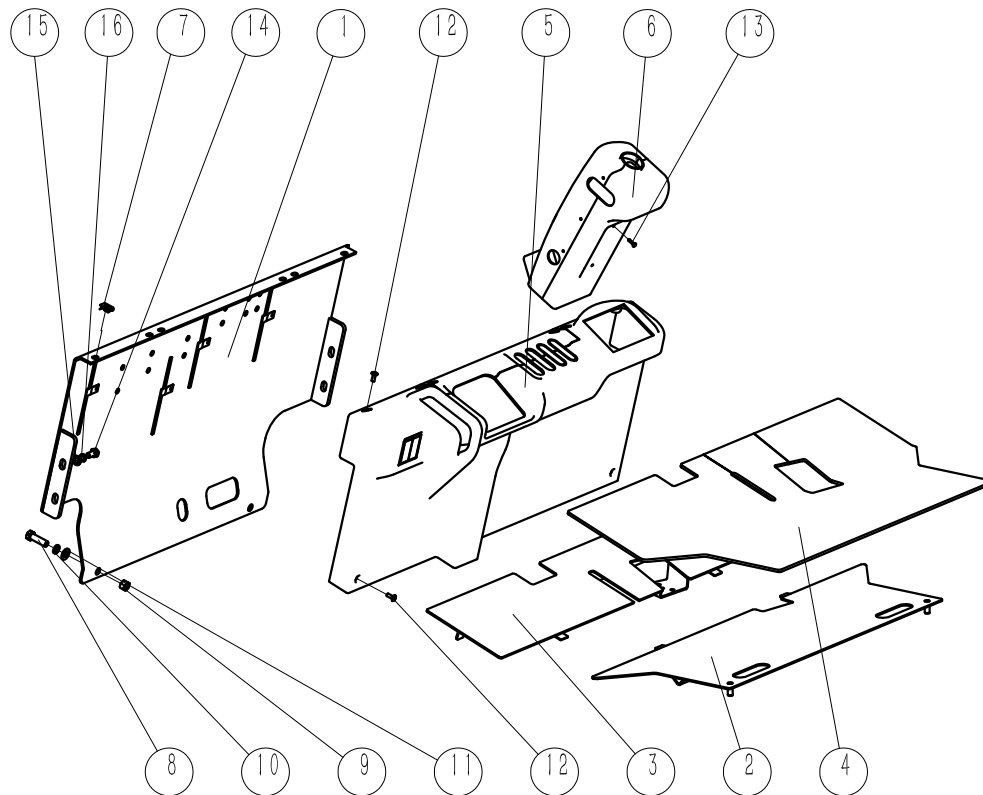
1.5~5.0t



No.	Part No.	Part Name	Qty	Remarks
9	XJD7540	leakage hole rubber shim	1	1.5t~4.0t
9	MK20.1.16	battery pad	4	4.5t~5.0t
10	JY40323	Rapid Fixture	1	
11	LP-133 M6	M6 Reed nut	2	
12	DIN11024 3.2	B shaped Spring cotters	1	
13	DB-S M6×16	beveling hexagon socket screw	4	
14	GB818 M4×12	cross recess head screw	4	
15	GB97.1 4	flat washer	4	
16	GB93 4	spring washer	4	
17	GB5783 M6×12	hexagon bolt	4	
18	GB97.1 6	flat washer	4	
19	GB93 6	spring washer	4	
20	GB5783 M12×35	hexagon bolt	4	
21	GB97.1 12	flat washer	4	
22	GB93 12	spring washer	4	
23	GB5786 M16×1.5×70	hexagon bolt	4	1.5t~4.0t
23	GB5786 M22×1.5×100	hexagon bolt	4	4.5t~5.0t
24	GB93 16	spring washer	4	1.5t~4.0t
24	GB93 22	spring washer	4	4.5t~5.0t

Chart 3-2 Body system II

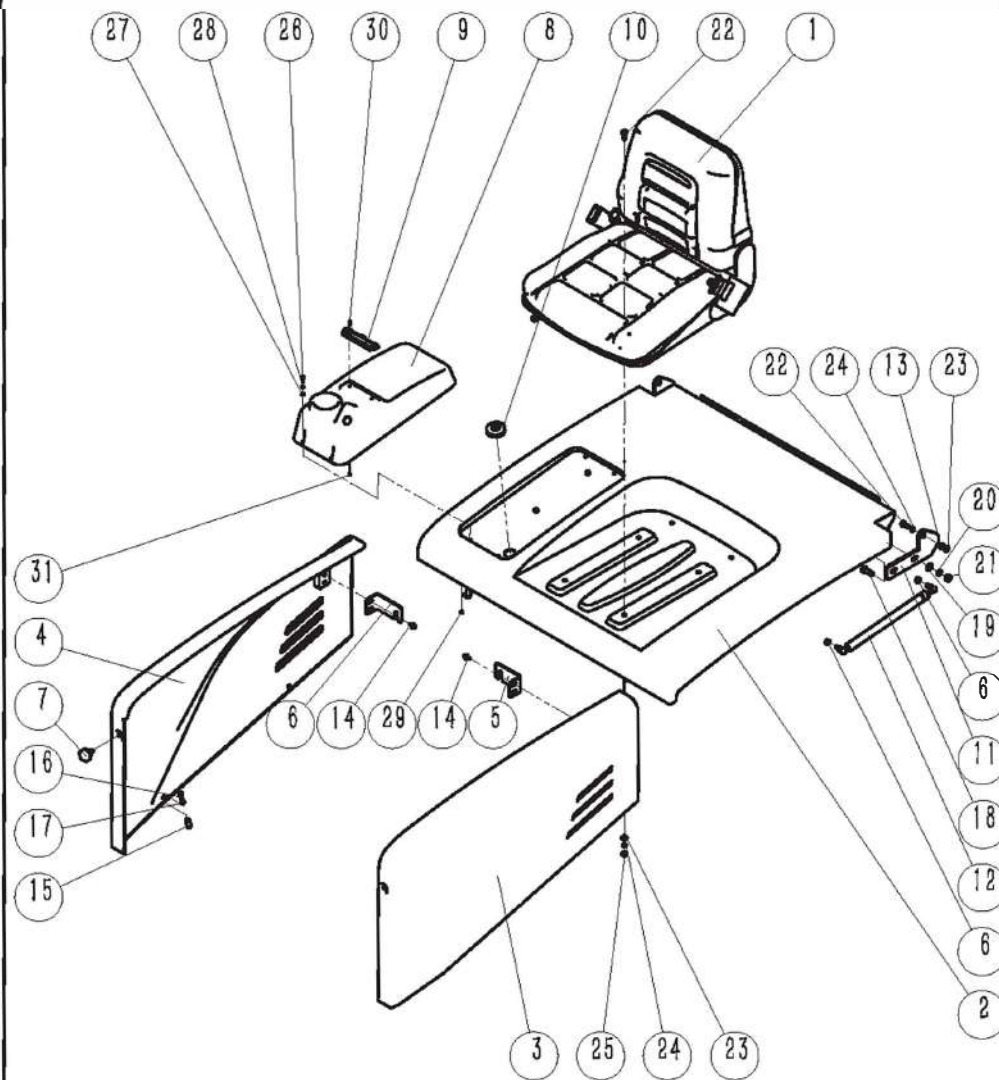
1.5~5.0t



No.	Part no.	Part Name	Qty	Remarks
1	1K415L-A2100	Front cover welding	1	1.5t~4.0t
1	1K450L-A2100	Front cover welding	1	4.5t~5.0t
2	1K415L-A3100	Rear pedal welding	1	1.5t~2.0t/ SWB 2.5t
2	1K430L-A3100	Rear pedal welding	1	3.0t~4.0t/ LWB 2.5t
2	1K450L-A3100	Rear pedal welding	1	4.5t~5.0t
3	1K415L-A3200	Front pedal welding	1	1.5t~4.0t
3	1K450L-A3200	Front pedal welding	1	4.5t~5.0t
4	1K415L-H0005	Pedal pad	1	1.5t~4.0t
4	1K450L-A3001	Pedal pad	1	4.5t~5.0t
5	1K415L-H2001	Front housing	1	1.5t~4.0t
5	1K450L-H2001	Front housing	1	4.5t~5.0t
6	1K415L-H3000	Steering column housing assembly	1	
7	LP-133 M6	Reed nut	6	
8	GB5783 M12×40	Hex Bolt	2	
9	GB97.1 12	Flat washer	2	
10	GB93 12	Spring washer	2	
11	GB6170 M12	Hex nuts 1 type	2	
12	DB-S M6×16	Inverted inner hex screws	8	
13	GB818 M4×16	Cross recessed pan head screws	4	
14	GB5783 M10×20	Hex Bolt	4	
15	GB97.1 10	Flat washer	4	
16	GB93 10	Spring washer	4	

Chart 3-3 Body system III

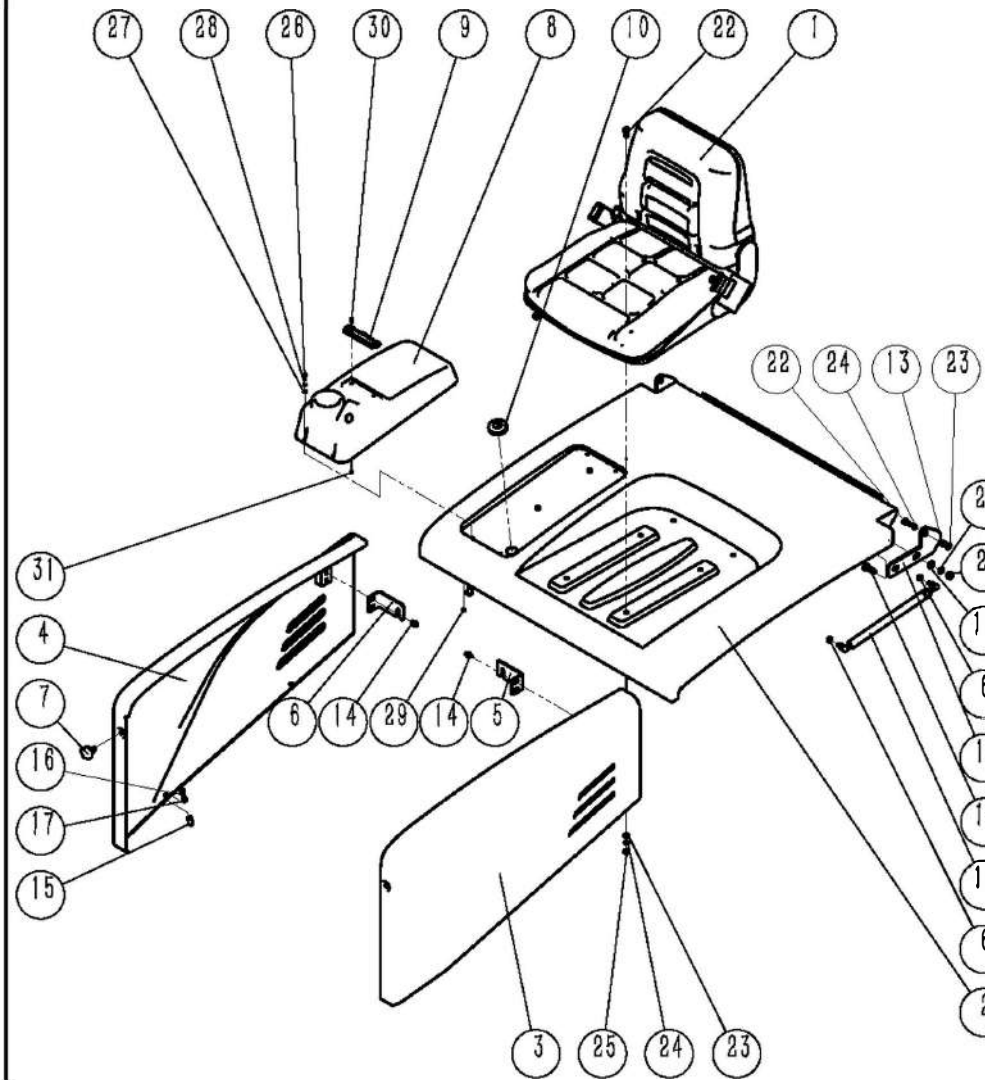
1.5~5.0t



No.	Part no.	Part Name	Qty	Remarks
1	YY03.00A01	Seat	1	
2	1K415L-H1100	Battery cover welding	1	1.5t
2	1K420L-H1100	Battery cover welding	1	2.0t/SWB 2.5t
2	1K430L-H1100	Battery cover welding	1	3.0t~4.0t/LWB 2.5t
2	1K450L-H1100	Battery cover welding	1	4.5t~5.0t
	1K450L-H3000	Middle cover welding	1	4.5t~5.0t
3	1K415L-H4001	Left fender	1	1.5t
3	1K420L-H4001	Left fender	1	2.0t/SWB 2.5t
3	1K430L-H4001	Left fender	1	3.0t~4.0t/LWB 2.5t
3	1K450L-H4001	Left fender	1	4.5t~5.0t
4	1K415L-H5001	Right fender	1	1.5t
4	1K420L-H5001	Right fender	1	2.0t/SWB 2.5t
4	1K430L-H5001	Right fender	1	3.0t~4.0t/LWB 2.5t
4	1K450L-H5001	Right fender	1	4.5t~5.0t
5	1K415L-H4002	Left fender fix plate	1	1.5t
5	1K420L-H4002	Left fender fix plate	1	2.0t~4.0t
6	1K415L-H5002	Right fender fix plate	1	1.5t
6	1K420L-H5002	Right fender fix plate	1	2.0t~4.0t
7	M8 x 40 x 15	Five star handle	2	
8	MK20.1.8.4	Cup holder	1	
9	120J	Folder	1	
10	QT0117	Medium protection coil	1	
11	1K415L-H1001	Battery cover hinge	2	1.5t~4.0t
11	TKA10.1.8	AB Hinge	2	4.5t~5.0t

Chart 3~3 body system 111

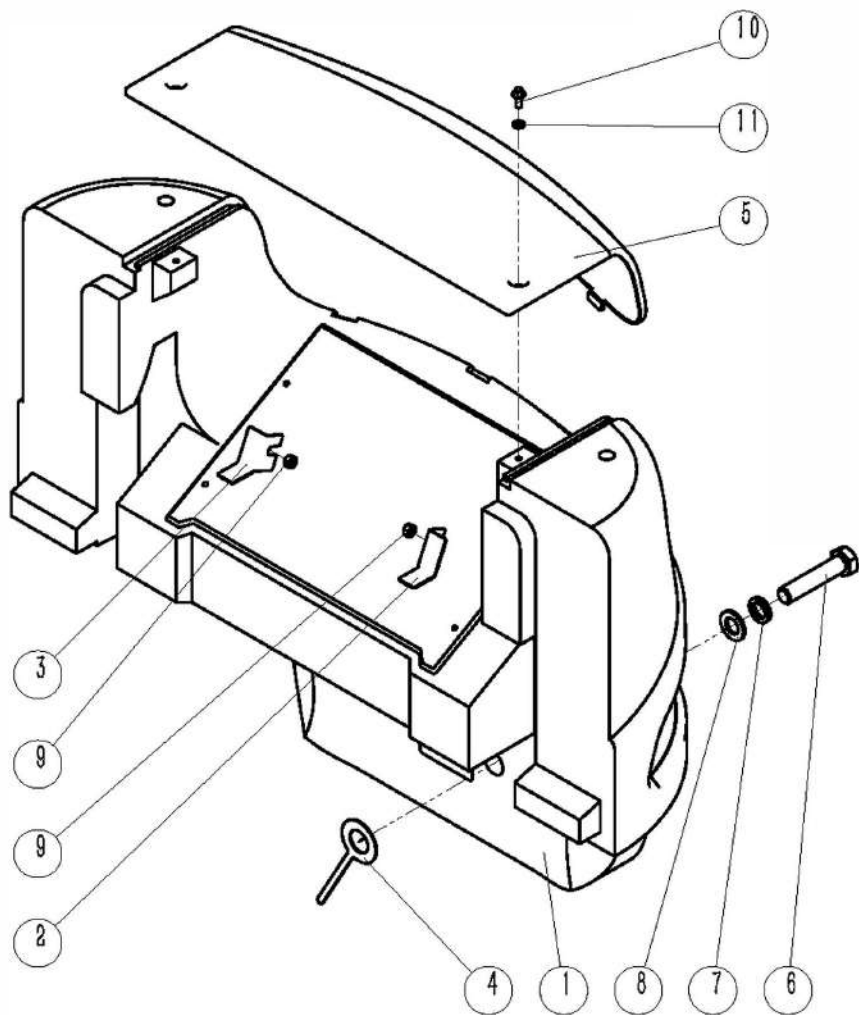
1.5~5.0t



N0.	Part No.	Part Name	Qty	Remarks
12	BQTH800A	spring Gas	1	1.5t~2.0t/SWB 2.5t
12	BQTH1000B	spring Gas	1	3.0t~4.0t/LWB 2.5t
12	BQTH500A	spring Gas	2	4.5t~5.0t
13	GT091408	Spacer busher	2	
14	QC340 M6×12	Hex flange face with gear bolt	2	
15	GB120.1 12×26	Internal threaded cylindrical pin	4	
16	GB70.1 M6×20	Hex socket head cap screw	4	
17	GB97.1 6	Flat washer	4	
18	GB5783 M10×30	Hex bolts	4	
19	GB97.1 10	Flat washer	4	
20	GB93 10	Spring washer	4	
21	GB6170 M10	Hex nuts 1 type	4	
22	GB5783 M8×20	Hex bolts	8	
23	GB97.1 8	Flat washer	6	
24	GB93 8	Spring washer	6	
25	GB6170 M8	Hex nuts 1 type	8	
26	GB818 M4×16	Cross recessed pan head screws	4	
27	GB97.1 4	Flat washer	4	
28	GB93 4	Spring washer	4	
29	GB6170 M4	Hex nuts 1 type	4	
30	GB819.1 M3×12	Cross recessed pan head screws	2	
31	GB6170 M3	Hex nuts 1 type	2	

Chart 3-44 Body system IV

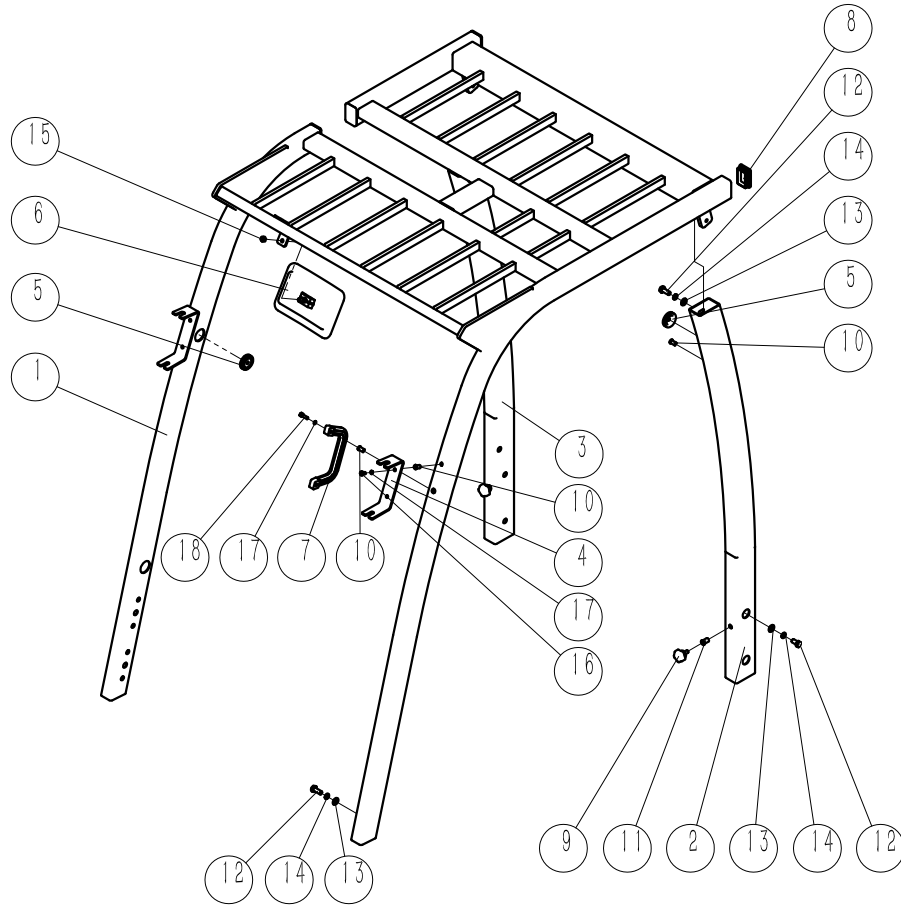
1.5~5.0t



No.	Part No.	Part Name	Qty	Remarks
1	1K415L-A0001	Counterweight	1	1.5t
1	1K420L-A0001	Counterweight	1	2.0t/LWB2.5t
1	1K430L-A0001	Counterweight	1	3.0t/SWB2.5t
1	1K435L-A0001	Counterweight	1	3.5t~4.0t
1	1K450L-A0001	Counterweight	1	
2	1K415L-A0003	Left adjustment pad of Counterweight	2	
3	1K415L-A0004	Right adjustment pad of Counterweight	2	
4	1K415L-A0005	Low adjustment pad of Counterweight	4	
5	1K415L-H0004	Rear cover	1	
5	1K420L-H0004	Rear cover	1	
5	1K435L-H0004	Rear cover	1	3.5t~4.0t
5	1K450L-H0001	Rear cover	1	4.5t~5.0t
6	GB5782 M24×110 10.9	Hex nut	2	
7	GB93 24	Spring washer	2	
8	GB97.1 24	Flat washer	2	
9	GB6170 M10	Hex nut	2	
10	QC340 M8×20	Hex flange face with gear bolt	2	
11	GB97.1 8	Flat washer	2	

Diagram 3-5 Overhead guard

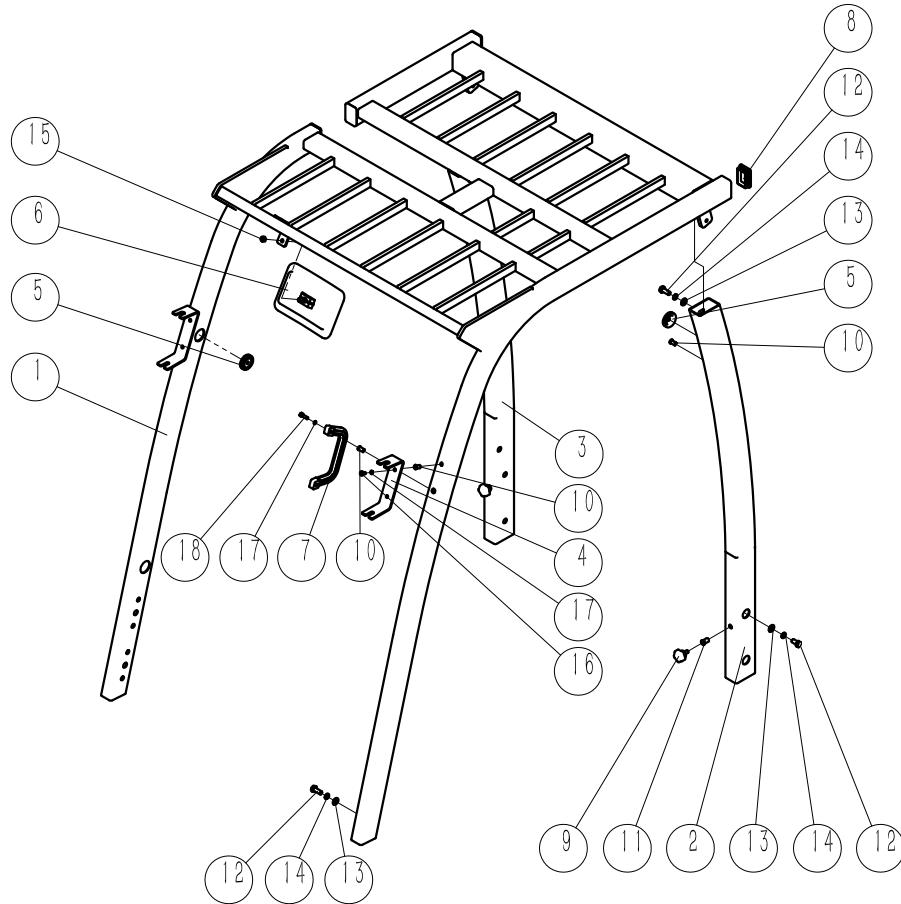
1.5~5.0t



No.	Part no.	Part Name	Qty.	Remarks
1	1K415L-G1000	Overhead guard welding	1	1.5t
1	1K420L-G1000	Overhead guard welding	1	2.0t /SWB 2.5t
1	1K430L-G1000	Overhead guard welding	1	3.0t-4.0t /LWB 2.5t
1	1K450L-G1000	Overhead guard welding	1	4.5t~5.0t
2	1K415L-G0001	Left rear support	1	1.5t~4.0t
2	1K450L-G2000	Left rear support	1	4.5t~5.0t
3	1K415L-G0002	Right rear support	1	1.5t~4.0t
3	1K450L-G3000	Right rear support	1	4.5t~5.0t
4	1K415L-G1006	Front light bracket	2	1.5t~4.0t
4	TK2030.1.2.4	Headlight fixed frame (left)	1	4.5t~5.0t
4	TK2030.1.2.5	Headlight fixed frame (right)	1	4.5t~5.0t
5	TK2030.8.8	Threading apron	3	
6	EQ140	Rear mirror assembly	1	
7	LS01	Handle	1	
8	RC6040MD	Square pipe plug	4	
9	M8×40×15	Five-star handle	2	
10	GB17880.1 M6×16.5	Flat head riveted nuts	8	
11	GB17880.1 M8×18	Flat head riveted nuts	2	
12	GB5783 M10×25	Hex bolt	12	1.5t~4.0t
12	GB5783 M12×25	Hex bolt	12	4.5t~5.0t
13	GB97.1 10	Flat washer	12	1.5t~4.0t
13	GB97.1 12	Flat washer	12	4.5t~5.0t
14	GB93 10	Spring washer	12	1.5t~4.0t
14	GB93 12	Spring washer	12	4.5t~5.0t

Chart3-5 Overhead guard

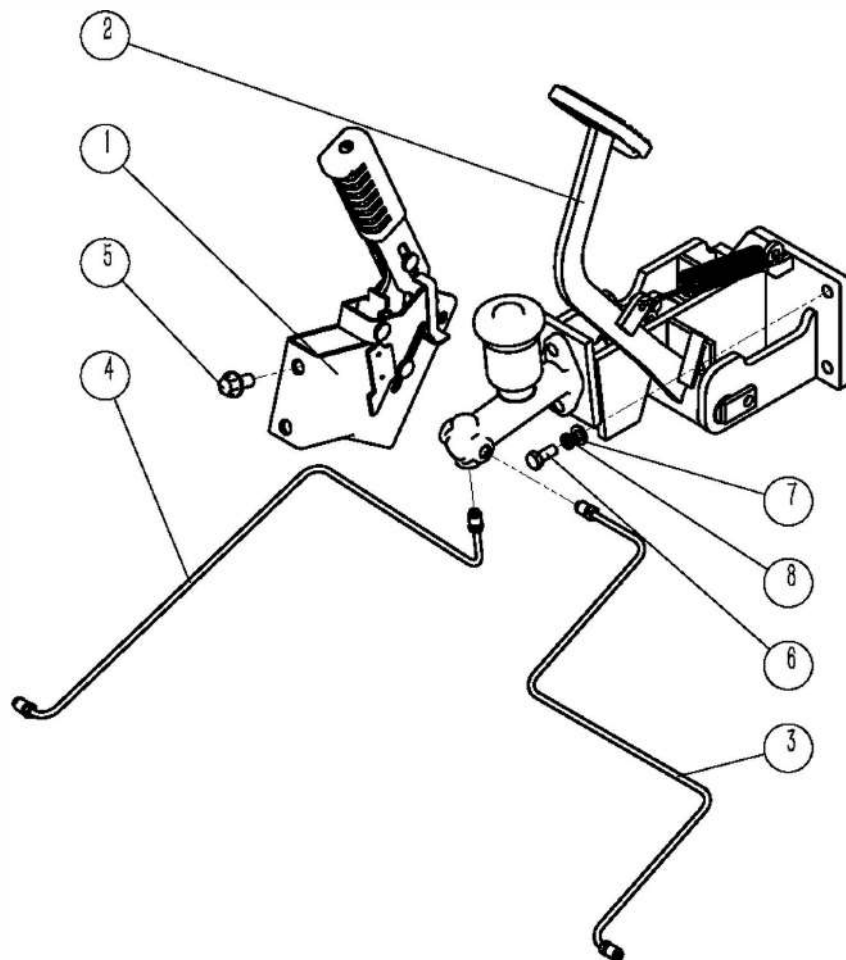
1.5~5.0t



No.	Part No.	Part Name	Qty.	Remarks
15	GB6170 M8	Hex nut style 1	1	
16	GB5783 M6×12	Hex bolt	4	
17	GB93 6	Spring washer	6	
18	GB70.1 M6×20	Hex socket head cap screws	2	

Chart 4-1 Brake system

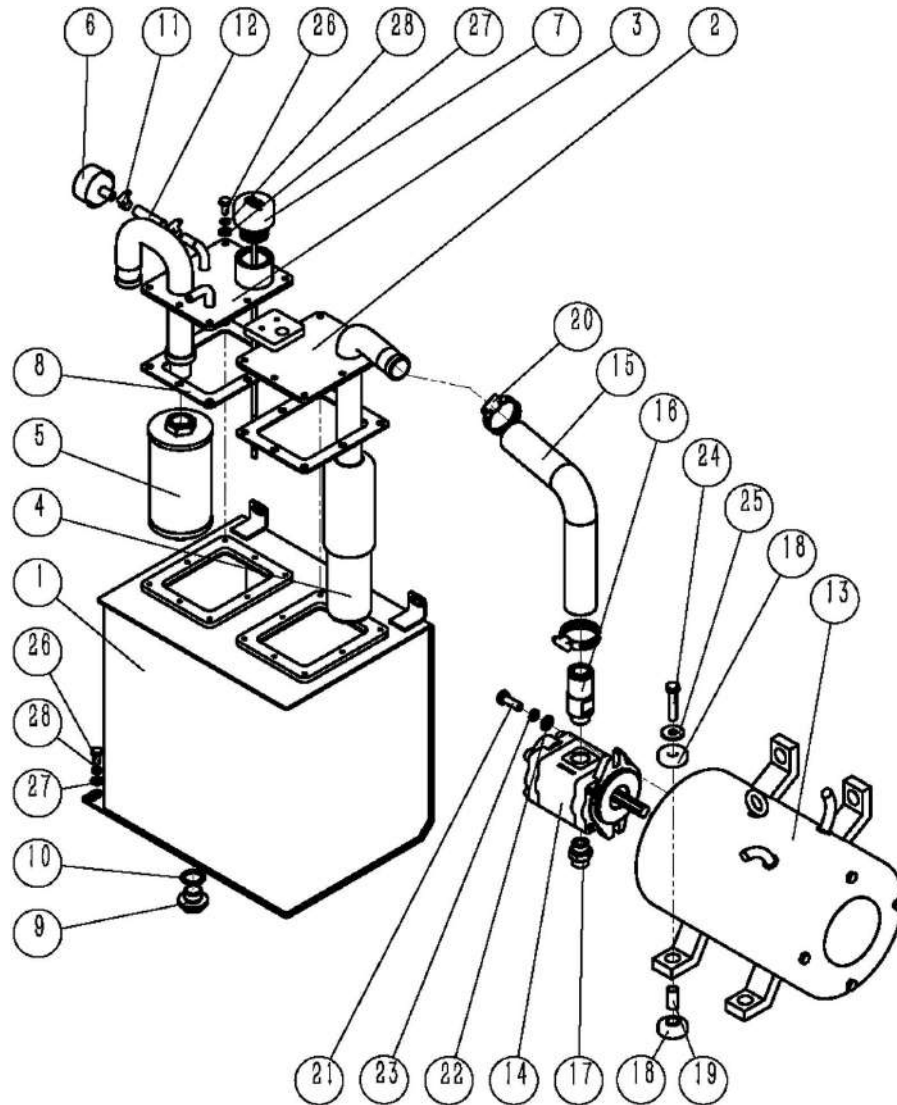
1.5~5.0t



No.	Part No.	Part Name	Qty.	Remarks
1	A73J3-60000	TK series handle brake assembly	1	
2	J1807-F0900	Foot brake assembly	1	
3	1K415L-L4000	Left brake steel tube assembly	1	1.5t~4.0t
3	1K450L-L4000	Left brake steel tube assembly	1	4.5t~5.0t
4	1K415L-L5000	Right brake steel tube assembly	1	1.5t~4.0t
4	1K450L-L5000	Right brake steel tube assembly	1	4.5t~5.0t
5	QC340 M10×20	Hex socket head cap screws	2	
6	GB5783 M8×20	Hex bolt	3	
7	GB97.1 8	Flat washer	3	
8	GB93 8	Spring washer	3	

Chart 5-1 Oil pump

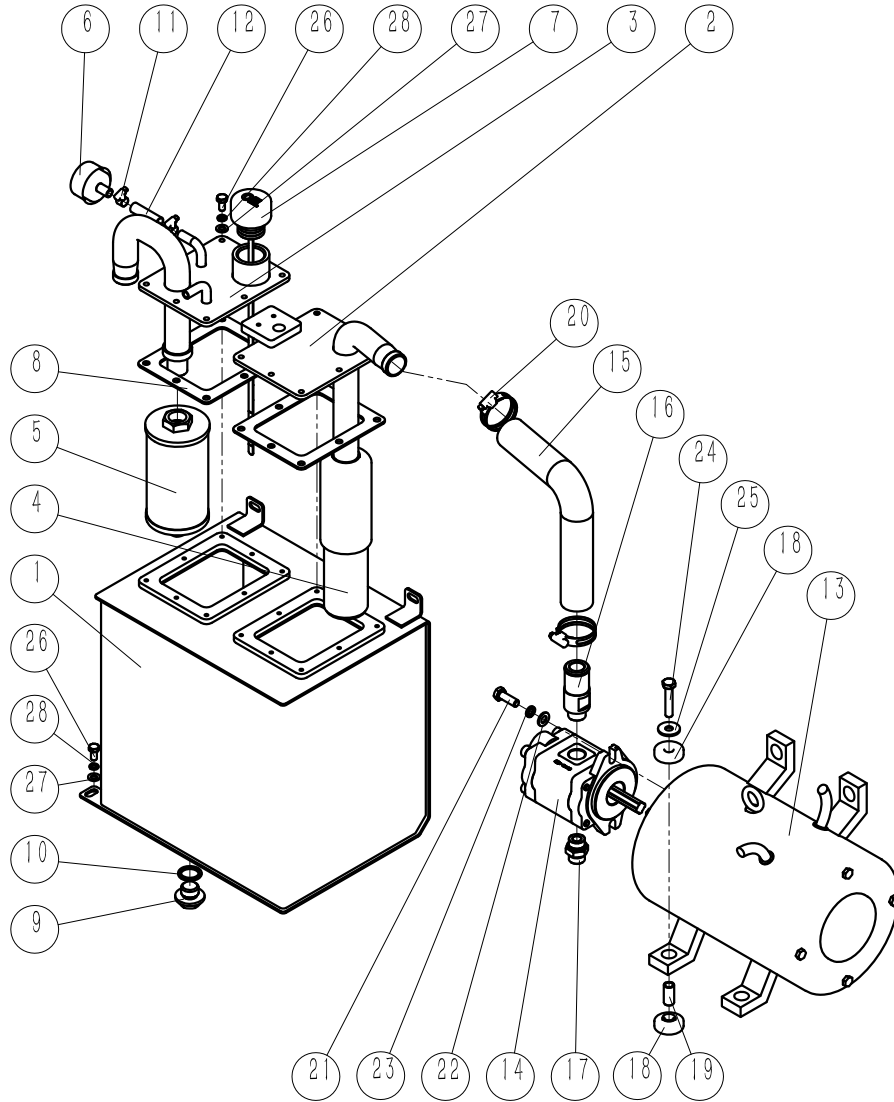
1.5~5.0t



No.	Part No.	Part Name	Qty.	Remarks
1	1K415L-K1100	Oil tank welding	1	1.5t~4.0t
1	1K450L-K1100	Oil tank welding	1	4.5t~5.0t
2	1K415L-K1200	Oil suction flange welding	1	1.5t~4.0t
2	MK20.3.1.2	Oil return device welding	1	4.5t~5.0t
3	1K415L-K1300	Oil return flange welding	1	1.5t~4.0t
3	MK20.3.1.3	Oil absorbing filter welding	1	4.5t~5.0t
4	Y0813	Oil filter	1	1.5t~4.0t
4	Y0816A	Oil return filter	1	4.5t~5.0t
5	Y0816A	Oil return filter	1	1.5t~4.0t
5	WU-100×80-J	Oil absorbing filter	1	4.5t~5.0t
6	HX0403	Oil tank breather	1	
7	TK1530.3.7	Hydraulic hose clamp	1	
8	TK420.3.2.3	Rubber washer	2	1.5t~4.0t
8	GB3452.1 95×3.55	O seal ring	2	4.5t~5.0t
9	QC385 M24×2	Hex head magnetic bolt	1	
10	JB982 24	Compound seal washer	1	
11	JB8870 d16	Hose clamp	2	
12	120202002	Rubber hose	0.1M	
13	XQD8.2-BYT5	Lift motor	1	1.5t
13	XQD8.6-BYT5	Lift motor	1	2.0t~2.5t
13	XQD10-BYT8	Lift motor	1	3.0t
13	XQD-10-3D	Lift motor	1	3.0t(80V)~4.0t
13	XQD15-BYT6	Lift motor	1	4.5t~5.0t
14	DSG05C1 6F9H9-R005C	Gear pump	1	1.5t~2.0t

Chart 5-1 Oil pump

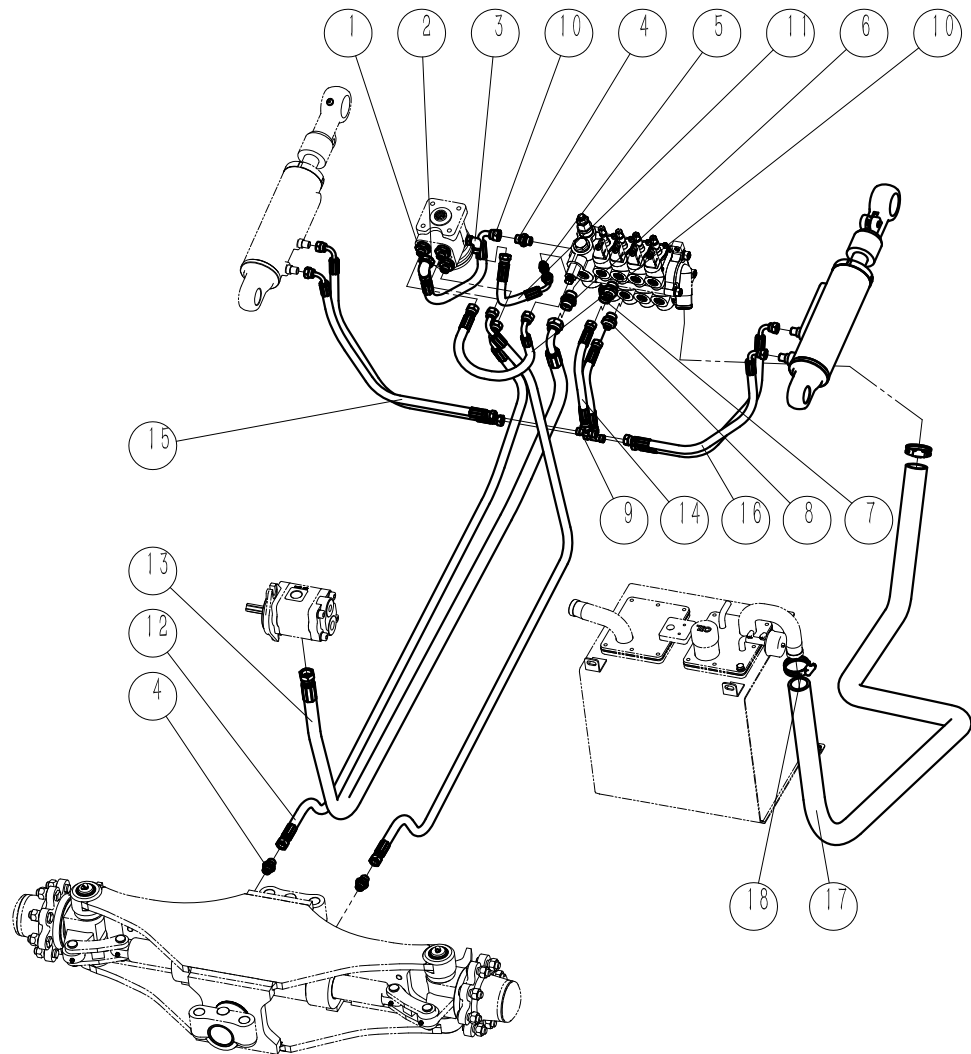
1.5~5.0t



No.	Part No.	Part Name	Qty.	Remarks
14	DSG05C20F9H9-R221C	Gear pump	1	2.5t~4.0t
14	DSG05C25F9H1-R019C	Gear pump	1	4.5t~5.0t
15	1K415L-K0001	Suction rubber hose	1	1.5t~4.0t
15	1K450L-K5001	Suction rubber hose	1	4.5t~5.0t
16	GJT1271	Union elbow	1	1.5t~4.0t
16	GJT209L	Union elbow	1	4.5t~5.0t
17	S1CH-22DQ	Union elbow	1	1.5t~4.0t
17	S1CG9-22-080GDQ	Union elbow	1	4.5t~5.0t
18	XJD4015	Rubber washer	8	
19	GT111430	Spacer sleeve	4	
20	Q67245	Double steel wire hoop	2	
21	GB5783 M10×30	Hex Bolt	2	1.5t~4.0t
21	GB5786 M14×1.5×40	Hex Bolt	4	4.5t~5.0t
22	GB97.1 10	Flat washer	6	1.5t~4.0t
22	GB97.1 14	Flat washer	4	4.5t~5.0t
23	GB93 10	Spring washer	6	1.5t~4.0t
23	GB93 14	Spring washer	4	4.5t~5.0t
24	GB5782 M10×50	Hex Bolt	4	
25	GB96.1 12	Big washer	4	
26	GB5783 M8×16	Hex Bolt	19	
27	GB97.1 8	Hex Bolt	19	
28	GB93 8	Spring washer	19	

Chart 5-2 Hydraulic circuit

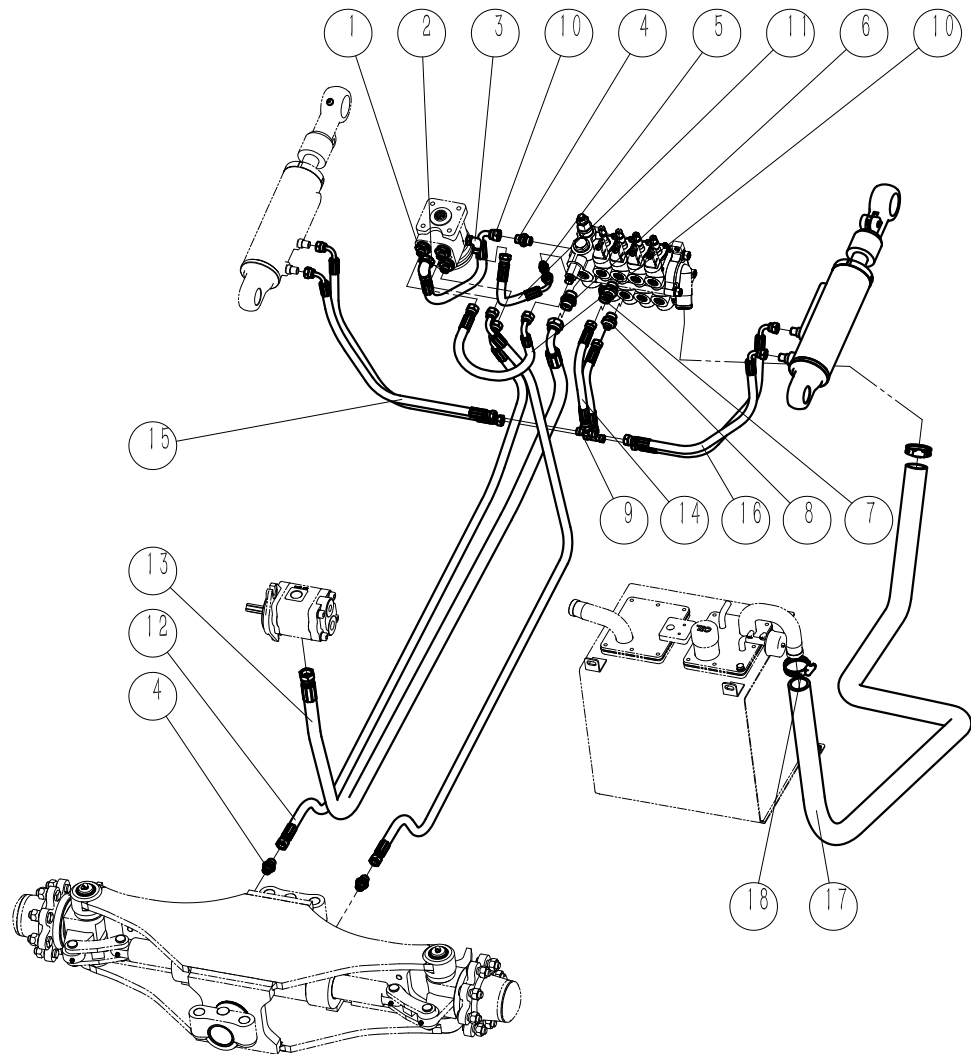
1.5~5.0t



No.	Part no.	Part Name	Qty	Remarks
1	S1CH-16-20DQ	Union elbow	3	
2	S1CH9-16-200GDQ	Union elbow	1	
3	S1CH9-14-120GDQ	Union elbow	1	
4	S1CH-16DQ	Union elbow	3	
5	S1CH-14-12DQ	Union elbow	1	
6	S1CH-22DQ	Union elbow	1	
7	S1CH-22-20(AH13)	Union elbow	1	
8	S1CH-14-20(AH13)	Union elbow	2	
8	S1CH-16-20DQ	Union elbow	2	4.5t~5.0t
9	SAC-14	Three-way union	2	
9	SAC-16	Three-way union	2	4.5t~5.0t
10	YGLES-08040J	Hydraulic hoses assembly	2	
10	YGLED-08055J	Hydraulic hoses assembly	1	4.5t~5.0t
11	YGLES-06026J	Hydraulic hoses assembly	1	
12	YGLES-08160J	Hydraulic hoses assembly	2	1.5t
12	YGLES-08170J	Hydraulic hoses assembly	2	2.0t~2.5t
12	YGLES-08190J	Hydraulic hoses assembly	2	3.0t
12	YGLES-08200J	Hydraulic hoses assembly	2	3.5t~4.0t
12	YGLES-08225J	Hydraulic hoses assembly	2	4.5t~5.0t
13	YGLES-12180J	Hydraulic hoses assembly	1	1.5t
13	YGLES-12190J	Hydraulic hoses assembly	1	2.0t~2.5t
13	YGLES-12210J	Hydraulic hoses assembly	1	3.0t~4.0t
13	YGLES-12260J	Hydraulic hoses assembly	1	4.5t~5.0t
14	YGIED-06020J	Hydraulic hoses assembly	2	1.5t~4.0t

Chart 5-2 Hydraulic circuit

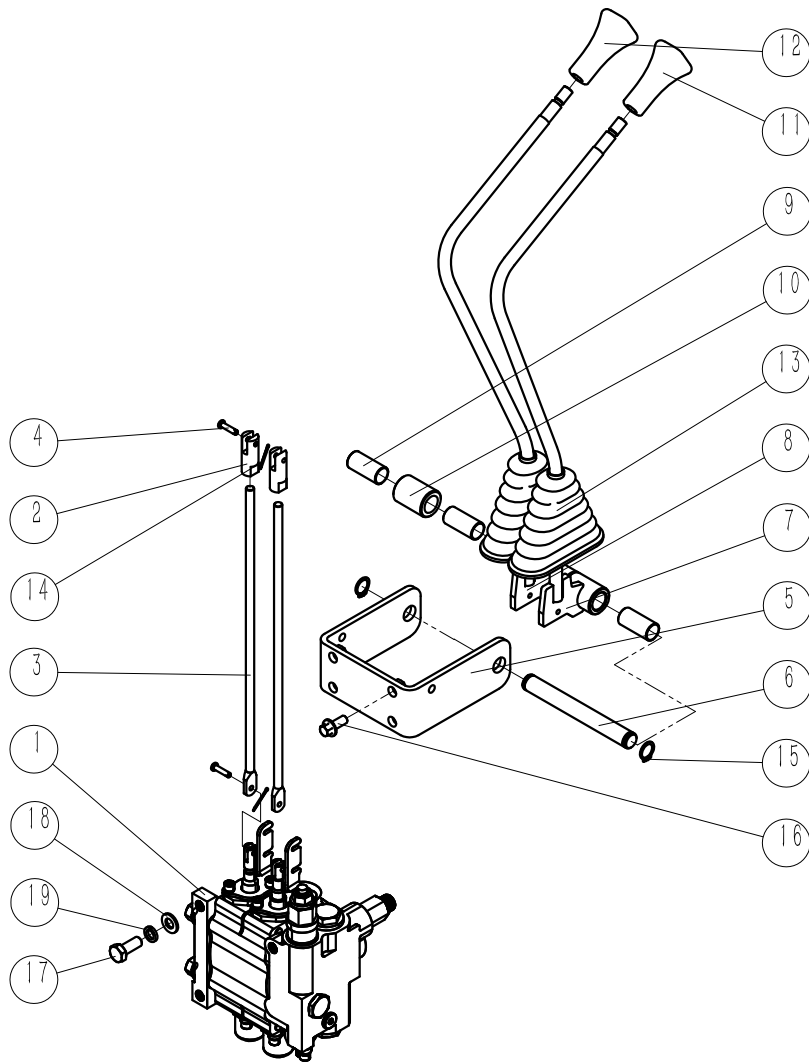
1.5~5.0t



No.	Part no.	Part Name	Qty.	Remarks
14	YGLED-08020J	Hydraulic hoses assembly	2	4.5t~5.0t
15	YGLED-06056J	Hydraulic hoses assembly	2	1.5t~4.0t
15	YGLED-08075J	Hydraulic hoses assembly	2	4.5t~5.0t
16	YGLED-06035J	Hydraulic hoses assembly	2	1.5t~4.0t
16	YGLED-08055J	Hydraulic hoses assembly	2	4.5t~5.0t
17	1K415L-K0002	Oil return hose	1	1.5t~2.5t
17	1K430L-K0002	Oil return hose	1	3.0t~4.0t
17	1K450L-K4000	Oil return components	1	4.5t~5.0t
18	Q67245	Double steel wire hoop	2	1.5t~4.0t
18	Q67245	Double steel wire hoop	4	4.5t~5.0t

Chart 5-3 Multiway valve components

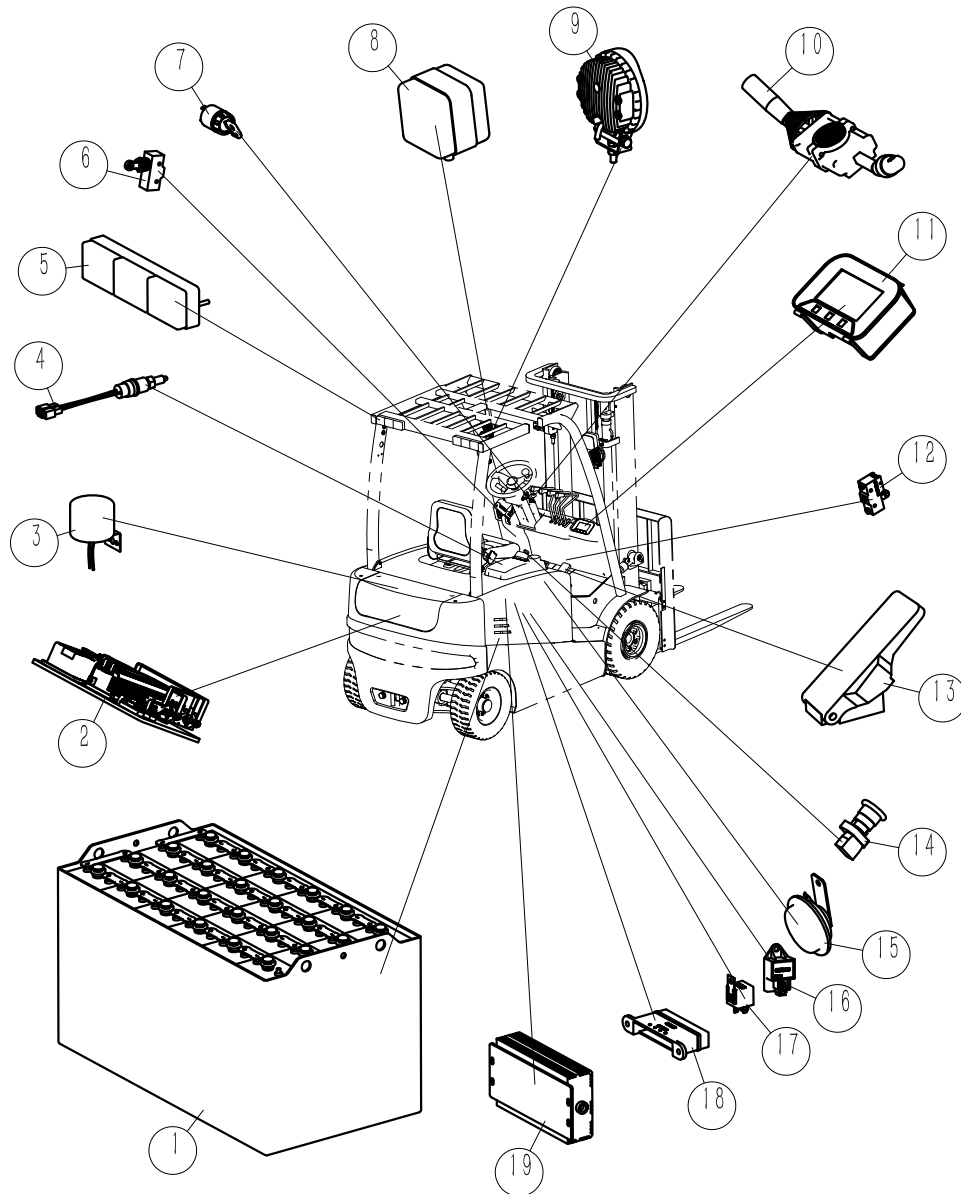
1.5~5.0t



No.	Part no.	Part Name	Qty.	Remarks
1	CDB2-F15DY-02-B1.5	Multiway valve	1	1.5t
1	CDB2-F15DY-02-B2-3	Multiway valve	1	2.0t~5.0t
2	1K415L-K2001	Connector	2	
3	MK20.3.4.2	Connecting rod	2	
4	TF15.3.12.7	Fixing pin	4	
5	MK20.3.4.1.1	Valve rod bracket welding	1	
6	MK20.3.4.1.2	Hinge pin	1	
7	1K415L-K2200	Control rod welding I	1	
8	1K415L-K2300	Control rod welding II	1	
9	HZ161838	Sliding bearing	3	
10	GT182838	Spacer sleeve	1	
11	Q60H7-48041	Lift control handle head	1	
12	Q60H7-48031	Tilt control handle head	1	
13	6048-10021	Dust cover	2	
14	GB91 1.6×28	Split pin	4	
15	GB894.1 16	Circlip for shaft	2	
16	QC340 M8×20	Hex flange with teeth bolt	4	
17	GB5786 M10×1.25×25	Hexagon headed bolt	4	
18	GB97.1 10	Flat washer	4	
19	GB93 10	Spring washer	4	

Chart6-1 Electric system 1

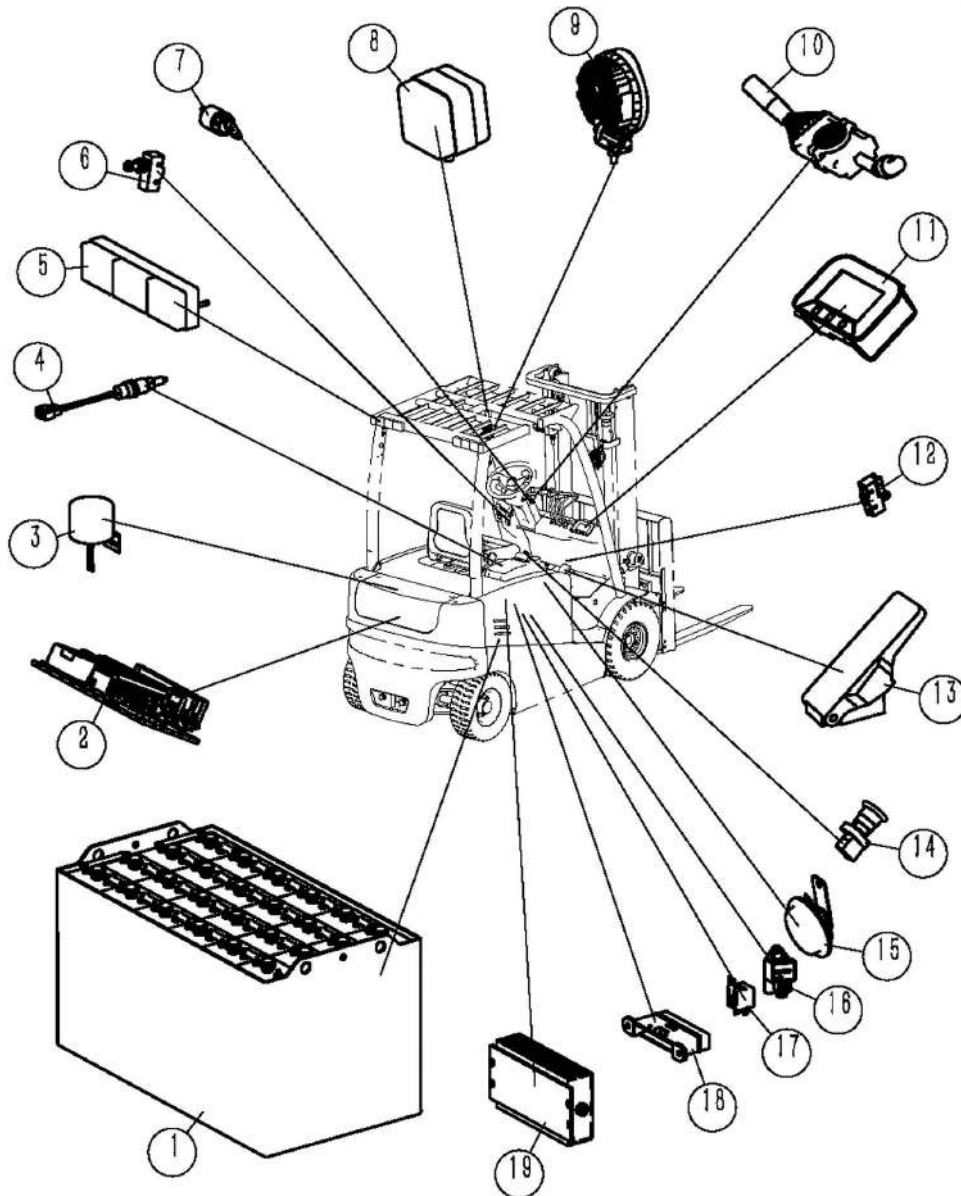
1.5~5.0t



No.	Part no.	Part Name	Qty.	Remarks
1	QDC48-400-3C	Battery	1	1.5t
1	QDC48-490-2	Battery	1	2.0t
1	QDC48-560-4	Battery	1	SWB 2.5t
1	QDC48-560-5	Battery	1	LWB 2.5t
1	QDC48-630-2	Battery	1	3.0t(48V)
1	QDC80-400-2	Battery	1	3.0t(80V)~3.5t
1	QDC80-450-2	Battery	1	4.0t
1	QDC80-560-1	Battery	1	4.5t
1	QDC80-630-1	Battery	1	5.0t
2	1232SE-5321-1	Controller assembly	1	1.5t~2.0t
2	1234SE-5421-1	Controller assembly	1	2.5t~3.0t(48V)
2	1234SE-6321-1	Controller assembly	1	3.0t(80V)
2	1238E-6521-2	Controller assembly	1	3.5t~4.0t
2	1238E-6521-1Q	Controller assembly	1	4.5t~5.0t
3	DJB-24B	Reversing buzzer	1	
4	JK205	Micro switch of brake light	1	
5	DJ24LED-W1	24V tail light	2	
6	Z-15GQ22-B	Micro switch	1	
7	JK410	Ignition switch	1	
8	DJ24310-Z1	24V turning light	2	
9	DJ12-24027-D1	LED light	2	
10	A7J32-40111	Combination switch	1	
11	LDB80S04-BYT-E4	Digital instruments	1	1.5t~3.0t(48V)
11	LDB80S04H	Digital instruments	1	3.0t(80V)~5.0t

Chart6-1 Electrical system I

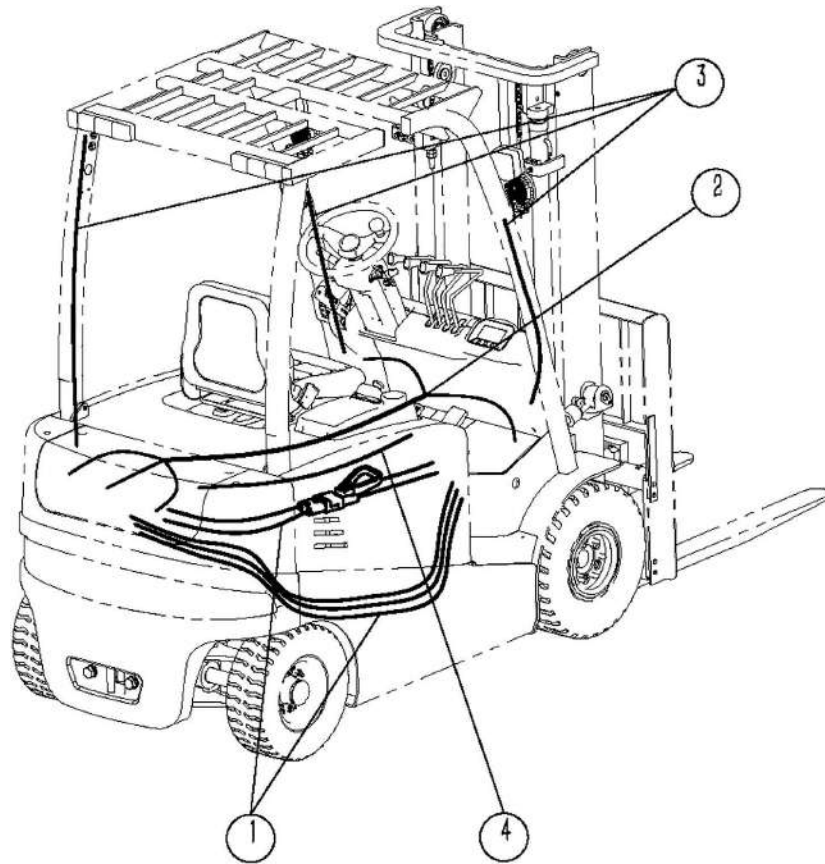
1.5~5.0t



NO.	Part No.	Part name	Qty.	remarks
12	Z-15GW22-B	microswitch	2	
13	DTJ01305	accelerator	1	
14	NP2-BS542	emergency switch	1	
15	DL2280-24V	klaxon	1	
16	SG252	electronic flasher	1	
17	JD202S	solid-state relay	2	
18	BX2081X-ZP	fuse-box dispenser	1	
19	ZTDC-4824	DC-DC converters	1	1.5t~3.0t(48V)
19	ZTDC-8024	DC-DC converters	1	3.0t(80V)~5.0t

Chart 6-2 Electrical system II

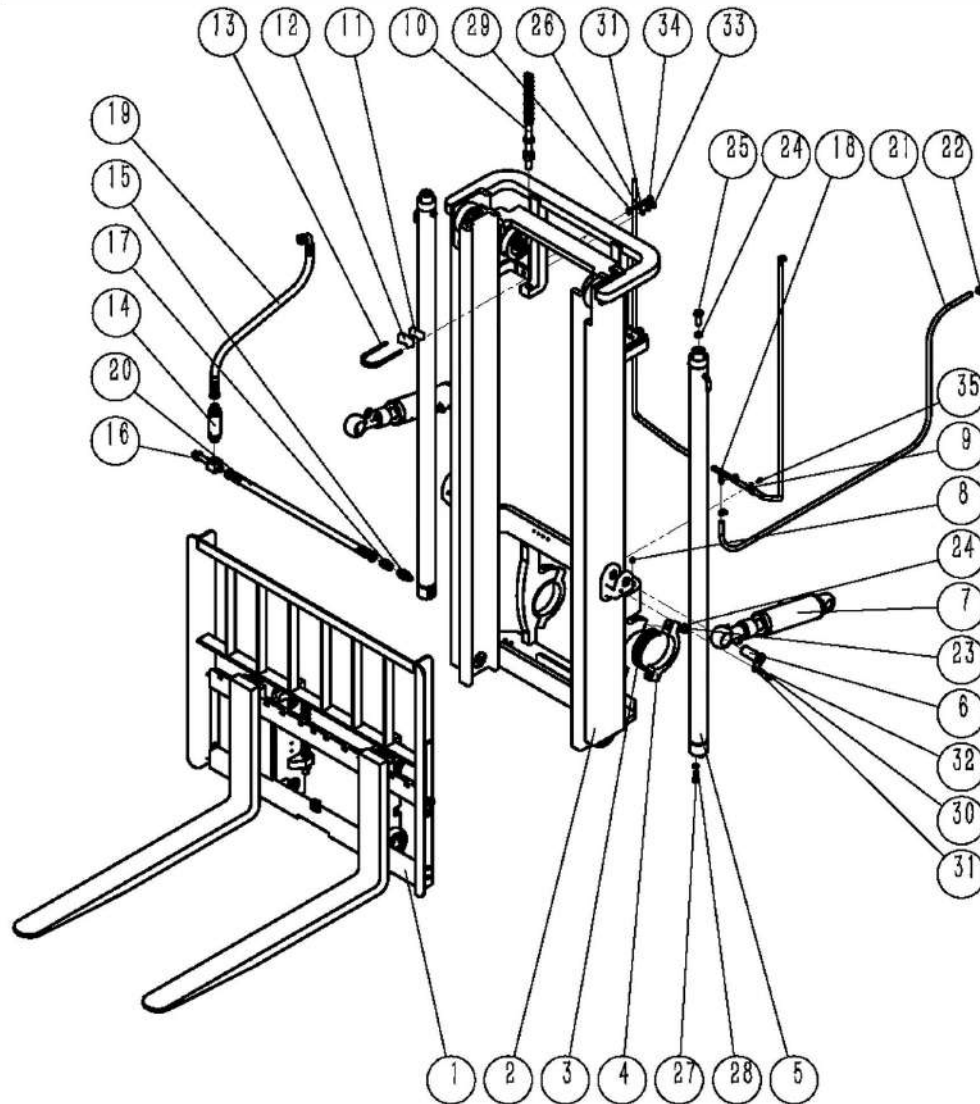
1.5 ~ 5.0t



NO.	Part No.	Part name	Qty.	Remarks
1	1K415L-N1000	cable assemble	1.5t~2.0t/short wheel base	2.5t
1	1K430L-N1000	cable assembly	3.0t~4.0t/long wheel base	2.5t
1	1K450L-N1000	cable assembly	1	4.5t~5.0t
2	1K415L-N2000	the wiring harness assembly	1	1.5t~4.0t
2	1K450L-N2000	the wiring harness assembly	1	4.5t~5.0t
3	1K415L-N3000	auxiliary harness assembly	1	1.5t~4.0t
3	1K450L-N3000	auxiliary harness assembly	1	4.5t~5.0t
4	NP2-BS542-1	emergency stop switch harness	1	

Chart7-1 Lifting system

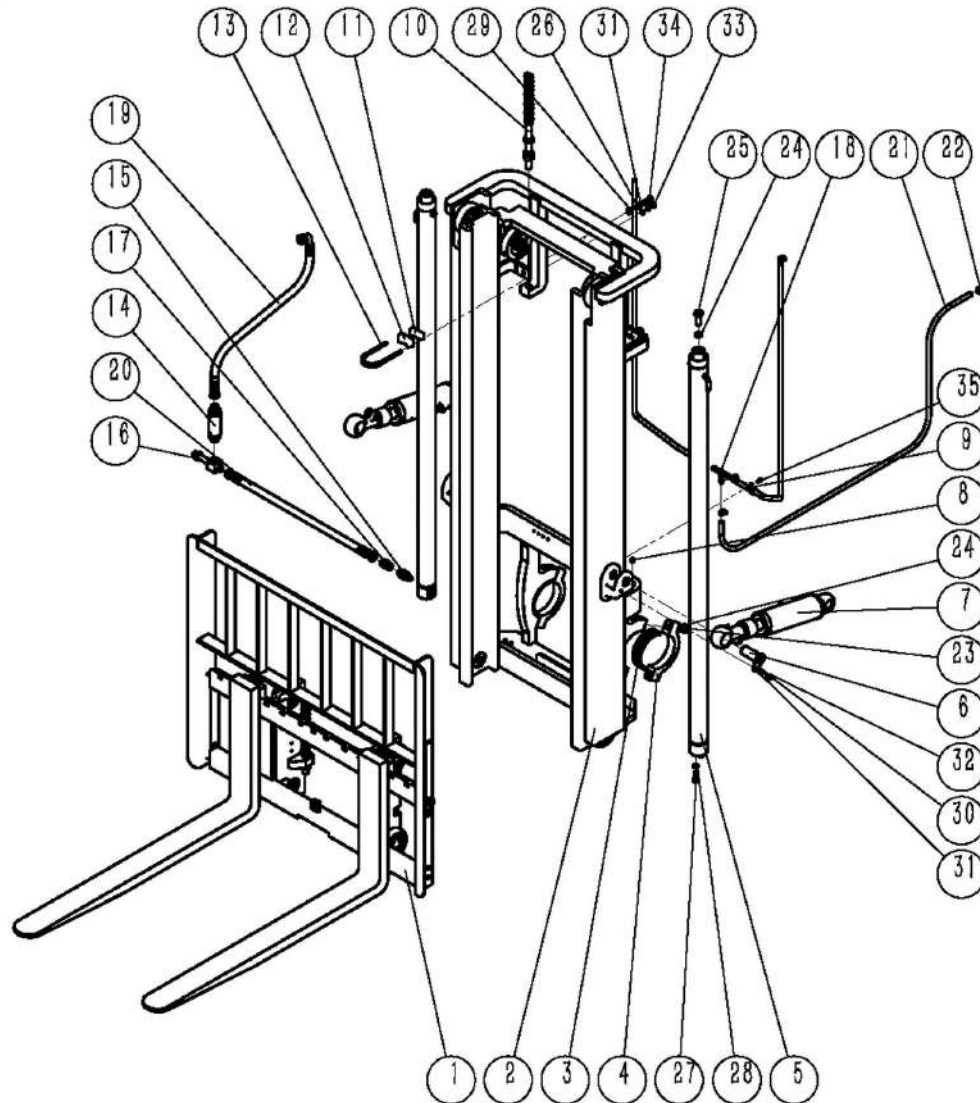
1.5~5.0t



No.	Part No.	Part Name	Qty.	Remarks
1		expensive rack parts portal	1	see picture 7-2
2		portal	1	see picture 7-3
3	D20B8-02001	axial wood	2	1.5t~4.0t
3	1K450L-B0001	axial wood	2	4.5t~5.0t
4	MK20.1.12	bearing cover	2	1.5t~4.0t
4	1K450L-A0003	bearing cover	2	4.5t~5.0t
5	LM3545-TK-HQ	rose oil level	2	1.5t
5	LM4050-TK-HQ	lifting oil level	2	2.0t~2.5t
5	LM4556-TK-HQ	lifting oil level	2	3.0t
5	LM5063-TK-HQ	lifting oil level	2	3.5t~4.0t
5	LM5070-MF-HQ	lifting oil level	2	4.5t~5.0t
6	XZ30-075-LW	the ear plate pin	2	1.5t~4.0t
6	XZ40-095-LW	the ear plate pin	2	4.5t~5.0t
7	QX3063-MK116	dump ram	2	1.5t, H < 4m
7	QX3063-MK72	dump ram	2	1.5t, H ≥ 4m
7	QX3270-MK116	dump ram	2	2.0t~3.0t, H < 4m
7	QX3270-MK72	dump ram	2	2.0t~3.0t, H ≥ 4m
7	QX3580-MK116	dump ram	2	3.5t~4.0t, H < 4m
7	QX3580-MK72	dump ram	2	3.5t~4.0t, H ≥ 4m
7	QX4590-MK143	dump ram	2	4.5t~5.0t, H < 4.5m
7	QX4590-MK75	dump ram	2	4.5t~5.0t, H ≥ 4.5m
8	JB7940.1 M10×1	straight through	2	
9	RSC1-19		2	
10	LH1223-X	lifting chain group	2	1.5t

Chart7-1 Lifting system

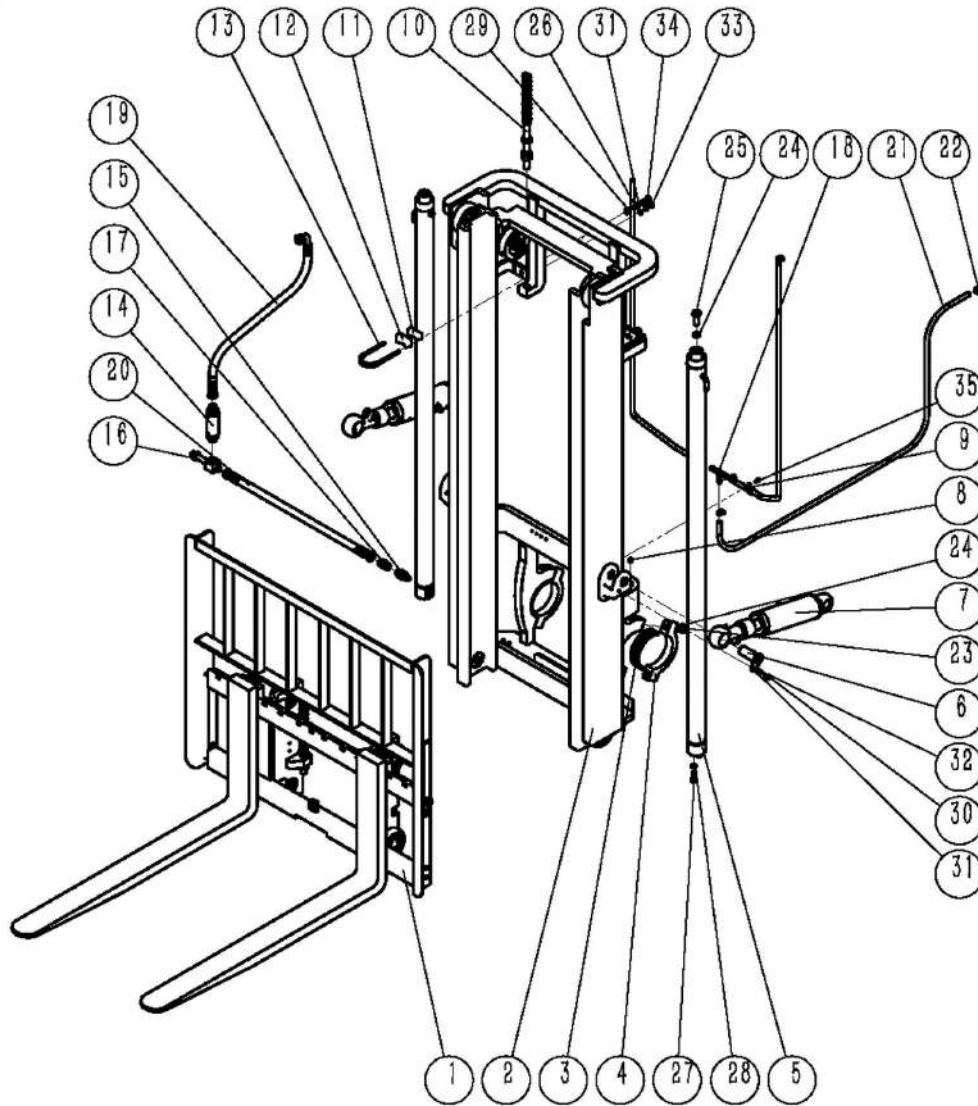
1.5~4.0t



No.	Part No.	Part name	Qty.	Remarks
10	LH1234-X	lifting chain group	2	2.0t~3.5t
10	LH1244-X	lifting chain group	2	4.0t
10	LH1634-X	lifting chain group	2	4.5t~5.0t
11	TB1025.2.4	set piece	2	
12	TB1025.2.7	set piece	2	
13	UM08-62-105-30B	U-shaped bolt	2	1.5t~4.0t
13	UM08-78-100-30B	U-shaped bolt	2	4.5t~5.0t
14	XSF-1669	governor valve	1	1.5t
14	XSF-1670	governor valve	1	2.0t~3.0t
14	XSF-1671	governor valve	1	3.5t~5.0t
15	BYT-QDF-3t-00	shut-off vave assembly	1	1.5t~4.0t
15	BYT-QDF-5T-00	shut-off assembly	1	4.5t~5.0t
16	GJT165T	three pipe coupling	1	1.5t~4.0t
16	GJT166T	three pipe coupling	1	4.5t~5.0t
17	S2C-22-18W	internal and external thread	1	
18	GJT109T	three pipe coupling	1	
19	YQLES-12052SZJ	hydractic hose assembly	1	1.5t~4.0t
19	YQLES-12070SZJ	hydractic hose assembly	1	4.5t~5.0t
20	YQLES-12031J	hydractic hose assembly	1	1.5t~4.0t
20	YQLES-12051J	hydractic hose assembly	1	4.5t~5.0t
21	120202002	rubber hose	5M	
22	JB8870 d16	hose clamp	6	
23	GB5786 M16×1.5×70	hexagon bolt	2	1.5t~4.0t
23	GB5786 M22×1.5×100	hexagon bolt	2	4.5t~5.0t

Chart 7-1 Lifting system

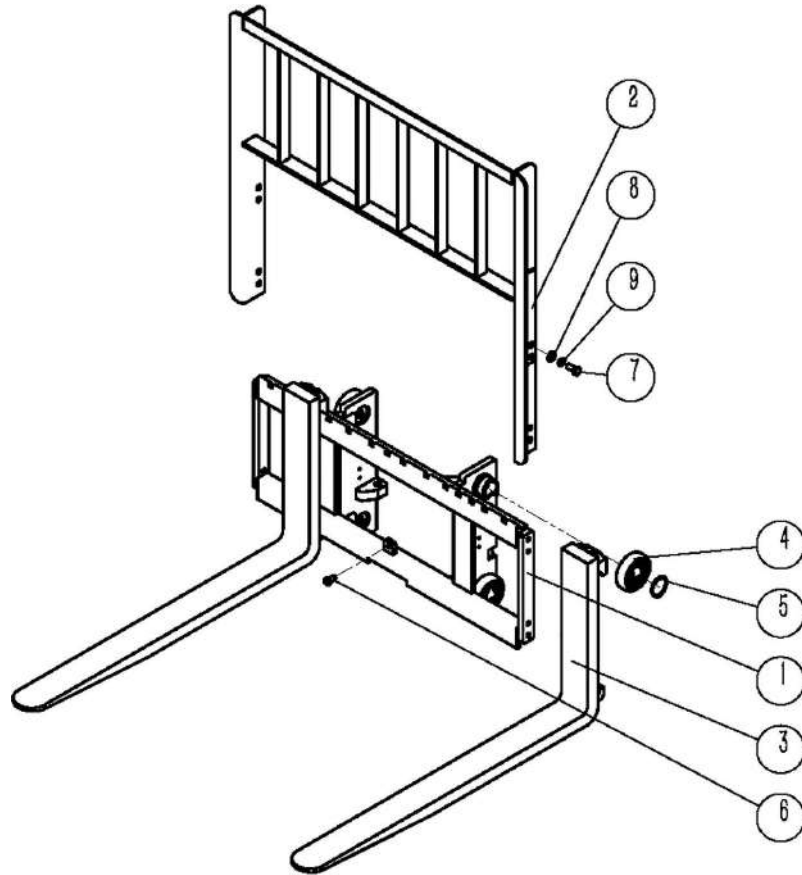
1.5~5.0t



No.	Part No.	Part name	Qty	Remarks
24	GB93 16	spring washer	4	1.5t~4.0t
24	GB93 22	spring washer	4	4.5t~5.0t
25	GB5786 M16×1.5×40	hexagon bolt	2	1.5t~4.0t
25	GB5786 M20×1.5×70	hexagon bolt	2	4.5t~5.0t
26	GB5783 M12×70	hexagon bolt	2	
27	GB5786 M12×1.5×30	hexagon bolt	2	
28	GB93 12	spring washer	2	
29	GB6170 M12	type I hexagon nut	2	
30	GB5783 M8×16	hexagon bolt	2	
31	GB97.1 8	flat washer	2	
32	GB93 8	spring washer	2	
33	GB923 M8	cover	2	
34	GB6170 M8	type I hexagon nut	2	

Chart 7-2 Fork carriage assembly

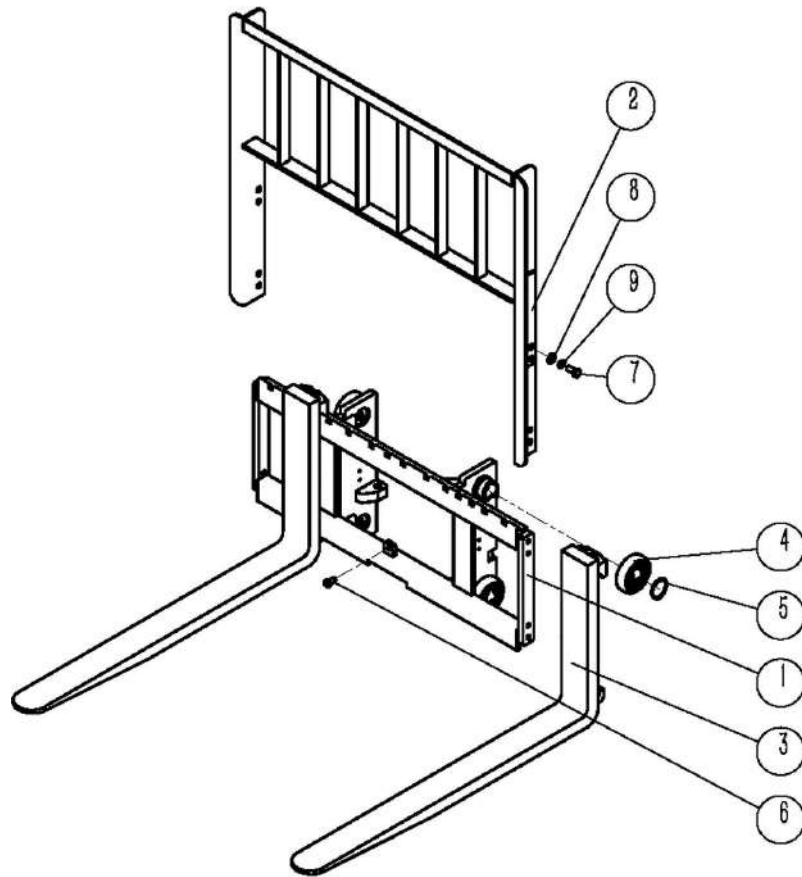
1.5~5.0t



No.	Part No.	Part name	Qty	Remarks
1	1K415L-F1000	welding of cargo fork rack	1	1.5t
1	1K420L-F1000	welding of cargo fork rack	1	2.0t~2.5t
1	1K430L-F1000	welding of cargo fork rack	1	3.0t~4.0t
1	1K450L-F1000	welding of cargo fork rack	1	4.5t~5.0t
2	1K415L-F2000	welding of cargo fork rack	1	1.5t~2.5t
2	1K430L-F2000	welding of cargo fork rack	1	3.0t~4.0t
2	1K450L-F2000	block sheft welding	1	4.5t~5.0t
3	1.8T-1070×100×35A	hook A type shelves	2	1.5t
3	2.5T-1070×122×40A	hook A type shelves	2	2.0t~2.5t
3	3.0T-1070×125×45A	hook A type shelves	2	3.0t
3	3.5T-1070×125×50A	hook A type shelves	2	3.5t~4.0t
3	4.5T-1070×150×50A	hook A type shelves	2	4.5t~5.0t
4	NL078.3.00R1-00.1	compound flud rotation	4	1.5t
4	760211K0T.1	compound flud rotation	4	2.0t~2.5t
4	760311NT(119.60).1	compound flud rotatiin	4	3.0t~4.0t
4	760311K7T.1	compound flud rotatron	4	4.5t~5.0t
5	GB894.1 35	circlip for shaft	4	1.5t
5	GB894.1 55	circlip for shaft	4	2.0t~5.0t
6	GB5783 M12×25	hexagon bolt	1	
7	GB5786 M14×1.5×30	hecagon bolt	8	1.5t~4.0t
7	GB5786 M16×1.5×30	hexagon bolt	8	4.5t~5.0t
8	GB97.1 14	flat washer	8	1.5t~4.0t
8	GB97.1 16	flat washer	8	4.5t~5.0t
9	GB93 14	spring washer	8	1.5t~4.0t

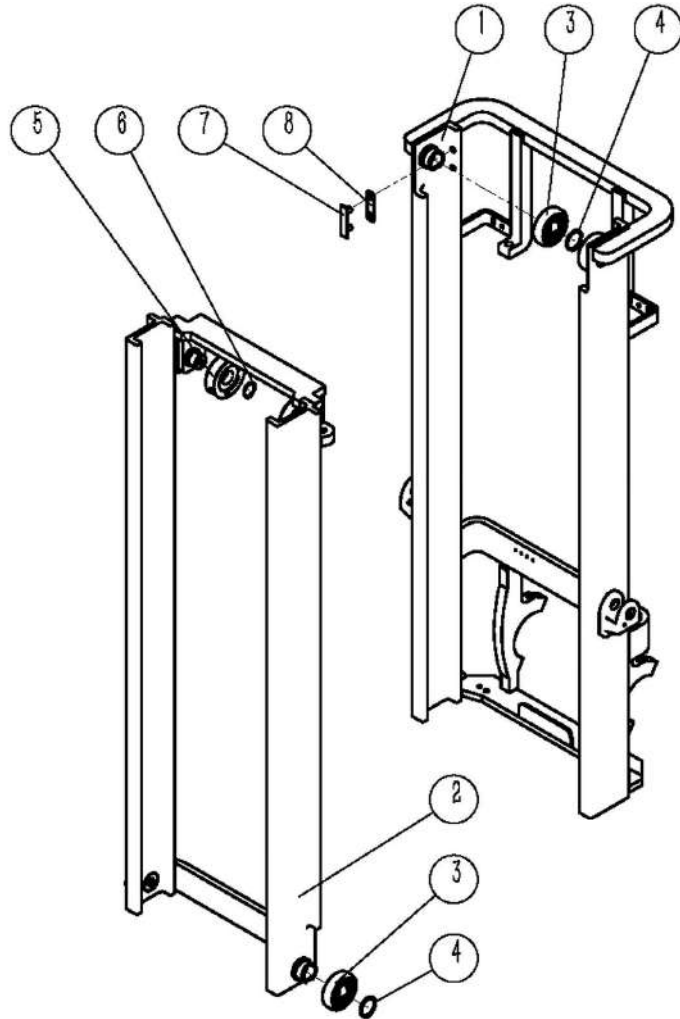
Chart 7-2 Fork carriage assembly

1.5~5.0t



No.	Part No.	Part name	Qty	remarks
9	GB93 16	spring washer	8	4.5t~5.0t

Chart 7-3 Mast



1.5~5.0t

No.	Part No.	Part name	Qty	Remarks
1	1K415L-B1000-30	the outer door frame is closed	1	1.5t
1	1K420L-B1000-30	the outer door frame is closed	1	2.0t~2.5t
1	1K430L-B1000-30	the outer door frame is closed	1	3.0t
1	1K435L-B1000-30	the outer door frame is closed	1	3.5t~4.0t
1	1K450L-B1000-XX	the outer door frame is closed	1	4.5t~5.0t
2	1K415L-D1000-30	interior door	1	1.5t
2	1K420L-D1000-30	interior door	1	2.0t~2.5t
2	1K430L-D1000-30	interior door	1	3.0t
2	1K435L-D1000-30	interior door	1	3.5t~4.0t
2	1K450L-D1000-XX	interior door	1	4.5t~5.0t
3	NL078.3.00R1-00.1	compound fluid rotation	4	1.5t
3	760211K0T.1	compound fluid rotation	4	2.0t~2.5t
3	760311NT(119.60).1	compound fluid rotation	4	3.0t~4.0t
3	760311K7T.1	compound fluid rotation	4	4.5t~5.0t
4	GB894.1 35	circlip for shaft	4	1.5t
4	GB894.1 55	circlip for shaft	4	2.0t~5.0t
5	780708K1	chain wheel	2	1.5t
5	780708K	chain wheel	2	2.0t~3.5t
5	CG40A1-20-00	chain wheel	2	4.0t
5	782311-00	chain wheel	2	4.5t~5.0t
6	GB894.1 40	circlip for shaft	2	1.5t~4.0t
6	GB894.1 55	circlip for shaft	2	4.5t~5.0t
7	TB2025.2.1.3	limit the slider	2	2.0t~4.0t
8	TB2025.2.1.4	resilient pad	4	2.0t~4.0t